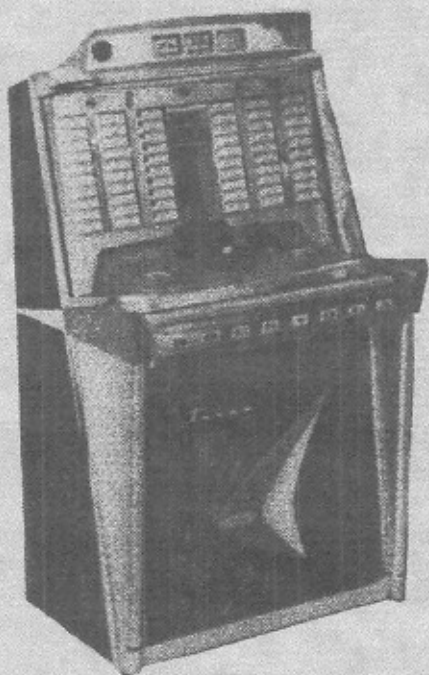


Service Manual

Model 1478 120 Selection

Model 1485 200 Selection

Phonographs





ROCK-OLA

INSTALLATION MANUAL AND OPERATING INSTRUCTIONS FOR MODELS 1478 and 1485

ROCK-OLA *Manufacturing Corporation*

800 N. KEDZIE AVE., CHICAGO 51, ILLINOIS

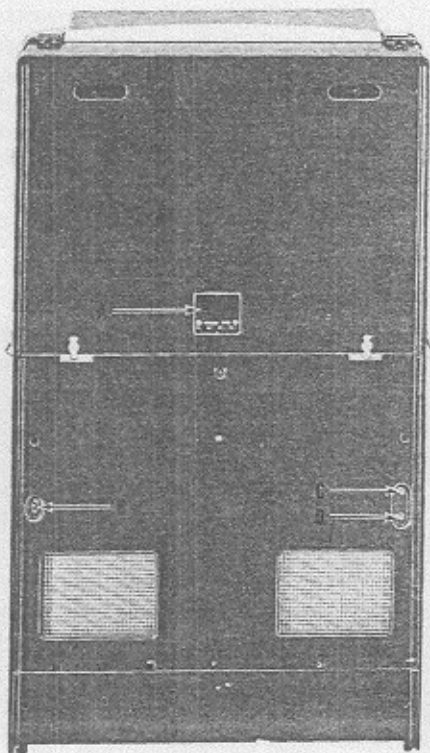


FIG. 1—Rear of Cabinet

117 V. LINE CORD

Check your location's power line outlet before plugging in the phonograph. The outlet should meet the requirements stamped on the serial plate (A-Fig. 1) affixed to the rear of the phonograph cabinet.

POWER AND LIGHT SWITCH

The master line switch (B-Fig. 1) is located on the rear of the cabinet.

Up position - ON
Down position - OFF

This switch controls all the power to the mechanism, amplifier, and lights. Credits will not accumulate if coins are inserted when the master line switch is "OFF".

REJECT SWITCH

The reject switch (C-Fig. 1) is located on the rear of the cabinet. To reject a record that is playing, depress this button momentarily.

VOLUME CONTROL

Volume is adjusted with the slotted shaft (D-Fig. 1) located directly below the reject switch. Use the key supplied or a small screwdriver.

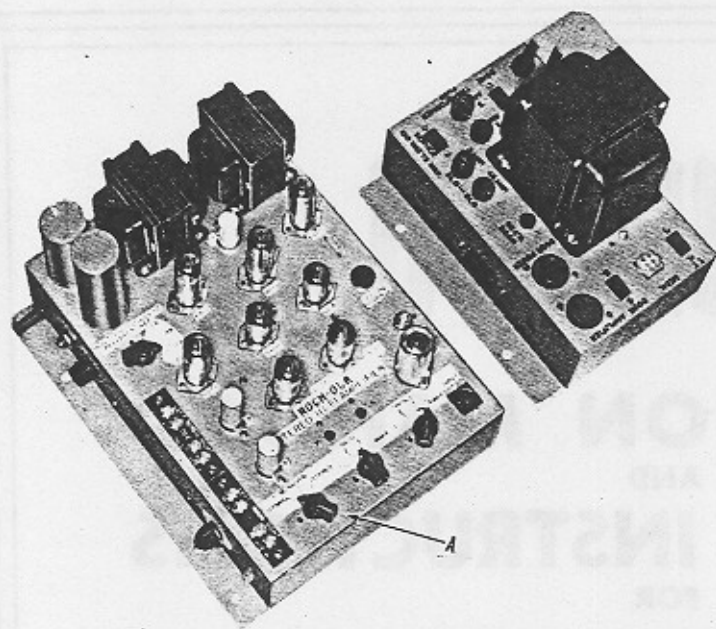


FIG. 2—View of Amplifier and Power Distribution Panel

AMPLIFIER

The amplifier in this machine is a dual purpose Stereophonic - Monaural amplifier. It may be used monaurally through the machine speakers and remote speakers, or stereophonically through a set, or sets, of stereo speakers.

1. Check the tubes, make sure they are tight in their sockets.

CAUTION: Tubes should never be removed when the phonograph is on.

2. There are several controls on the amplifier, some of which require explanation.

A. The "Bass" and "Treble" controls are quite ordinary, and should be set to give the desired type of sound.

- B. The "Stereo - Monaural - Hybrid" switch (A-Fig. 2) directs the amplifier output in the following ways:

STEREO position: This position disconnects the machine speakers and directs the output to the two stereo channels only.

MONAURAL position: This position combines the two stereo channels into one and directs this output to the machine speakers and/or remote speakers.

HYBRID position: This position directs the stereo output into the two stereo channels, and also combines these channels into one channel to feed the machine speakers.

- C. "Main Stereo Or Machine Speakers Power Switch": This switch controls the distribution of power, and serves to match impedances, between the machine speakers, stereo speakers, and remote speakers. If only the machine speakers are to be used, this switch should be in the "25W" position.

A complete description of this switch, and its uses with stereo and remote speakers, is contained in the service manual. Refer to the service manual before installing stereo or remote speakers.

- D. "Machine Speakers Pad": This control serves as a separate volume control for the machine speakers. However, two volume controls are undesirable when a machine is used monaurally without remote speakers. For this reason the "Machine Speakers Pad" is not connected when the "Power Switch" is in the "25W" position. Refer to the service manual for a complete description of the uses for this control.

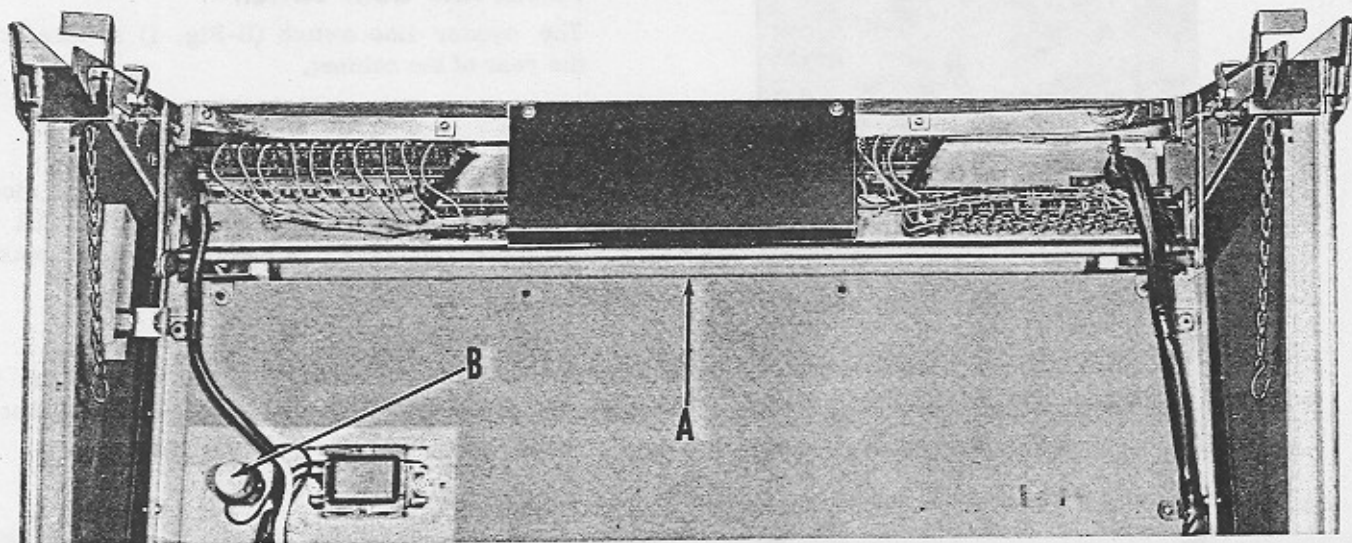


FIG. 3—Inside View of Front Door Panel

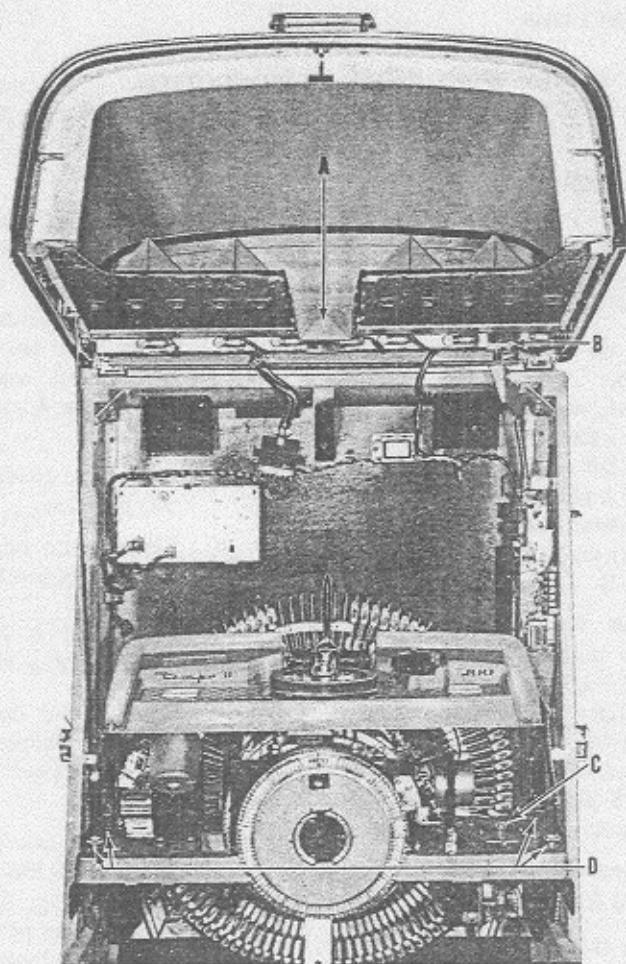


FIG. 4—Inside View of Cabinet

POWER PANEL

The power panel supplies power to the entire phonograph. Before placing the phonograph into operation, make certain that all plugs are firmly in their sockets.

SERVICE NOTE: The "Play Control Relay" and "Rectifier" are located in the power panel.

LIGHTING

One 20 watt fluorescent tube supplies lighting for the front door. The fluorescent tube is located under the key switches (A-Fig. 3), and the starter is under the right hand side of the tube adjacent to the ballast (B-Fig. 3).

Dome lighting is supplied by one 20 watt tube (A-Fig. 4). The starter for this light is on the dome rail (B-Fig. 4).

INSERTION OF TITLE STRIPS

Open the dome and lift out the program segments. Each flat (120) program segment is held in place

by a flat wire spring under the program panel; unclip the spring, slide the segment down, and lift it out. The triangular (200) program segments lift straight up.

Insert title strips into the program segments, and clip the segments back into place.

NOTE: Programming may be categorized, Hit Tunes, Westerns, etc., or not. If categories are desired, Program Indicator Windows are included in packing and can be inserted behind the Indicator Arrows.

MECHANISM ANCHOR BOLTS

The four anchor bolts (D-Fig. 4) must be unscrewed to about 3/8" above their chassis seats before operating the phonograph. However, these bolts must be retightened whenever the phonograph is to be transported.

IMPORTANT: REMOVE THE WOODEN PACKING BLOCKS FROM UNDERNEATH THE MECHANISM CHASSIS BEFORE SETTING THE PHONOGRAPH INTO OPERATION.

COIN CONVERSION INSTRUCTIONS

NOTE: MODELS 1478 AND 1485 ARE PRE-SET AT THE FACTORY FOR "ONE PLAY FOR 2 NICKELS OR ONE DIME, THREE PLAYS FOR A QUARTER, AND SEVEN PLAYS FOR A HALF-DOLLAR."

ACCUMULATOR AND SLUG REJECTOR ADJUSTMENTS:

1. "1 PLAY FOR 2 NICKELS OR ONE DIME, 3 (OR 4) PLAYS FOR A QUARTER, AND 8 (9 OR 10) PLAYS FOR A HALF-DOLLAR."
 - A. The upper ratchet on the accumulator, is the "quarter ratchet". If 4 plays for a quarter are desired, insert a pointed tool into the ear of the wafer (K-Fig. 5) on the upper ratchet, and lift slightly raising the wafer pin from the 3 play hold (A-Fig. 5). Keep the ratchet wheel from rotating and move the wafer until the pin drops into the 4 play hole (B-Fig. 5).
 - B. The center ratchet is the "half-dollar ratchet". Insert a pointed tool into the ear of the wafer (J-Fig. 5) on the center ratchet, and lift slightly raising the pin from the 7 play hole. Keep the ratchet from rotating and move the wafer until the pin drops into the 8 play hole (F-Fig. 5), or the 9 or 10 play holes (G,H-Fig. 5).
 - C. Leave the pricing switch, on the accumulator, in the 10¢-25¢ & 50¢ position.
 - D. Replace the pricing tab with one to match the chosen pricing combinations.
2. "1 PLAY FOR 2 NICKELS OR ONE DIME, AND 3 (OR 4) PLAYS FOR A QUARTER".
 - A. Remove complete slug rejector unit. (Move the lever on the front of the main slug rejector housing, and lift the rejector up.)
 - B. Bend the spring (B-Fig. 7) outward and lift out the top 50¢ rejector unit; then take out the lower unit exposing the inside of the housing, which is part of the 50¢ rejector. Loosen the screw at A in figure 7, move the lever all the way to the left, and retighten the screw. This will cause 50¢ coins to be rejected.
 - C. Return both slug rejectors units to their housing, and return this complete rejector to the main housing on the phonograph cabinet.
3. "1 PLAY FOR A NICKEL, 2 PLAYS FOR A DIME, AND 5 PLAYS (OR 6) FOR A QUARTER".
 - A. Remove the complete slug rejector unit from the phonograph, and adapt it to reject 50¢ coins. (See sections 2A, and 2B above.)
 - B. Figure 6 shows the lower right hand corner of the 5¢ - 10¢ - 25¢ rejector. Place the toggle (C-Fig. 6) as shown, and then switch the positions of the two screws (A, B-Fig. 6) so that the longer screw goes into the hole at B. This permits each nickel to register 1 play.
 - C. Return the complete slug rejector unit to the main housing on the phonograph cabinet.
 - D. Move the pricing switch to the 5¢-10¢-25¢ position. This converts the center ratchet from a "half-dollar ratchet" to a "dime ratchet".
 - E. Insert a pointed tool into the ear of the wafer on the center ratchet and lift slightly. Keep the ratchet from moving, and move the wafer until the pin drops into the 2 play hole (C-Fig. 5). In the same manner, move the wafer pin on the upper ratchet to the 5 (or 6) play hole (D, E-Fig. 5).
 - F. Replace the pricing tab with one to match the chosen pricing combinations.

SERVICE SCAN SWITCH

The service scan switch (C-Fig. 4) may be used at any time to stop the mechanism at any point of its operation. When servicing is complete, though, the switch must be left in the "operate" position or the mechanism will not function.

Moving the service scan switch left to the "scan" position causes the magazine to rotate. Releasing the switch will stop the magazine in any position convenient for insertion or removal of records.

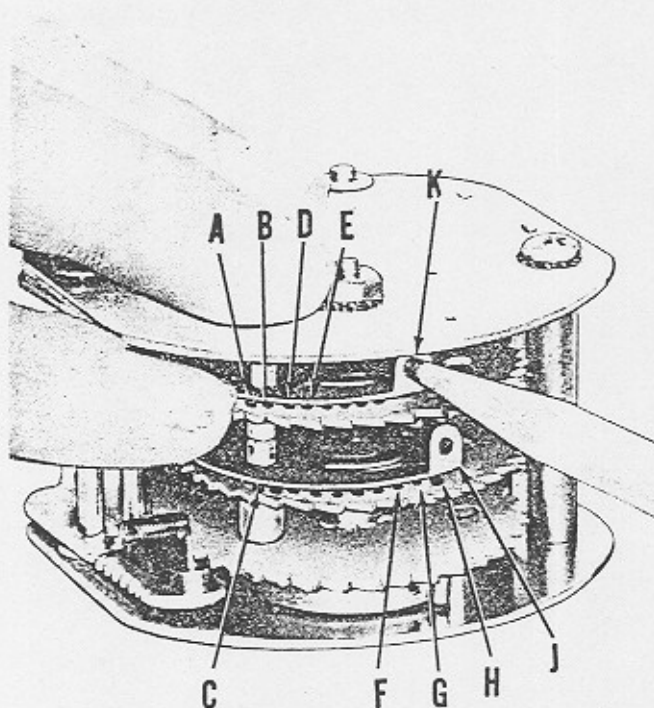


FIG. 5—View of Accumulator

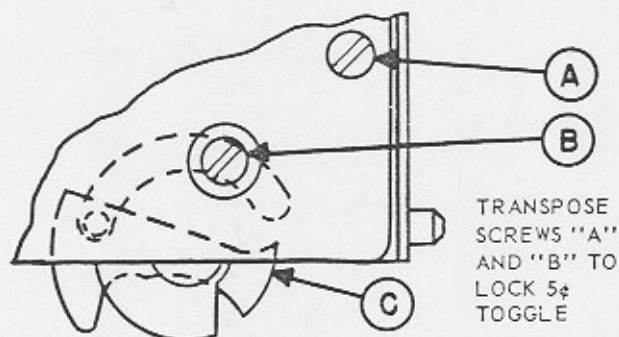
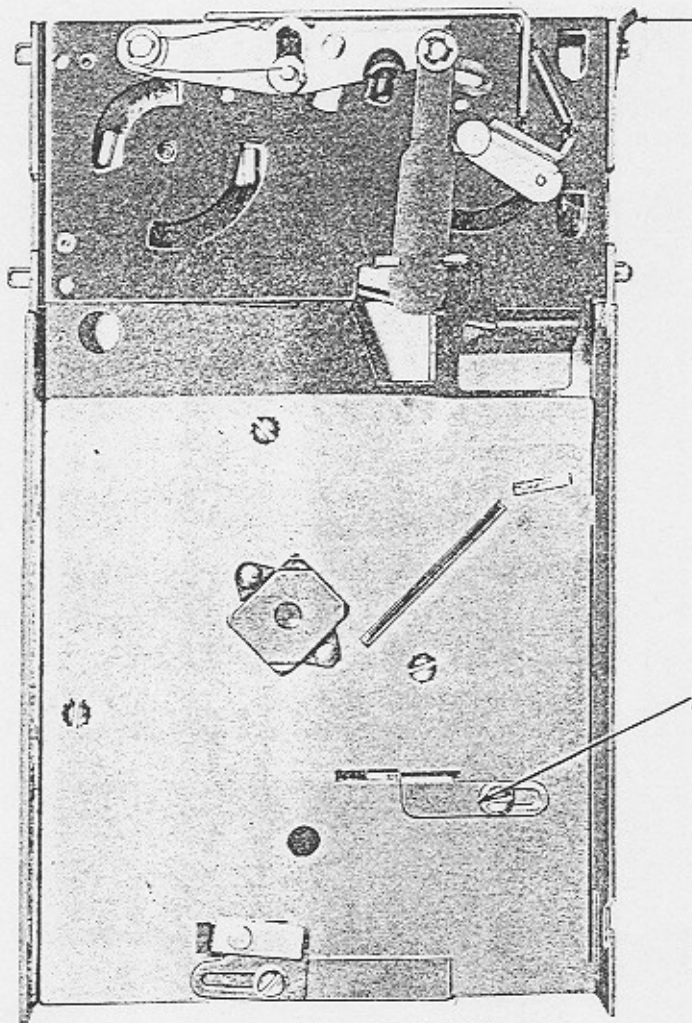


FIG. 6—Double 5c Toggle

MAGAZINE — INSERTION OF RECORDS

As already stated, the magazine can be caused to rotate without interruption by holding the scan switch to the left; however, the gripper arm must be in the standby position (arm over the magazine) for the scanning to take place.

The process of loading the magazine involves scanning a short distance, inserting several records, scanning again, inserting more records, etc.. Care must be taken, of course, to assure that the record locations match the title strip programming.



50c SLUG REJECTOR & HOUSING

FIG. 7—Slug Rejector