

### INTRODUCTION

The installation procedure for the MM-5 and MM-6 Models are virtually identical. The MM-6 incorporates improved door release latches which are opened as shown.

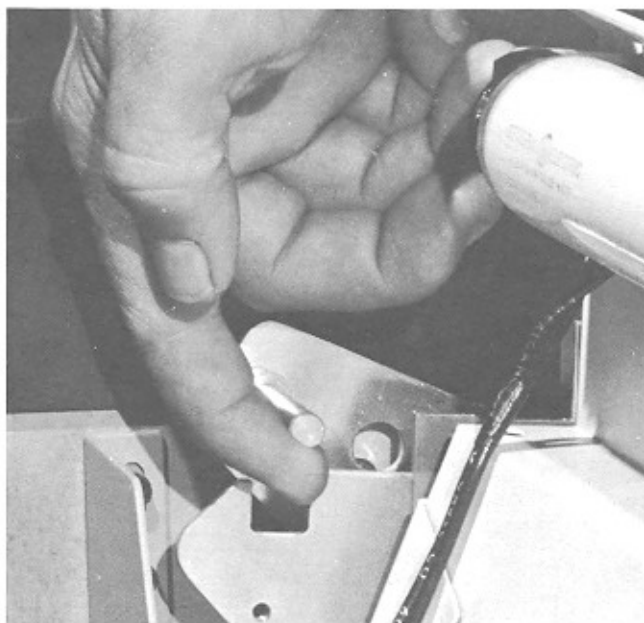
### STEREO ROUND SOUND SYSTEM CONNECTION CHART

Connections for the MM-6 are identical to those for the MM-5 with the exception of the added tweeters. Refer to the connections chart on the next page for MM-6 sound system connections.

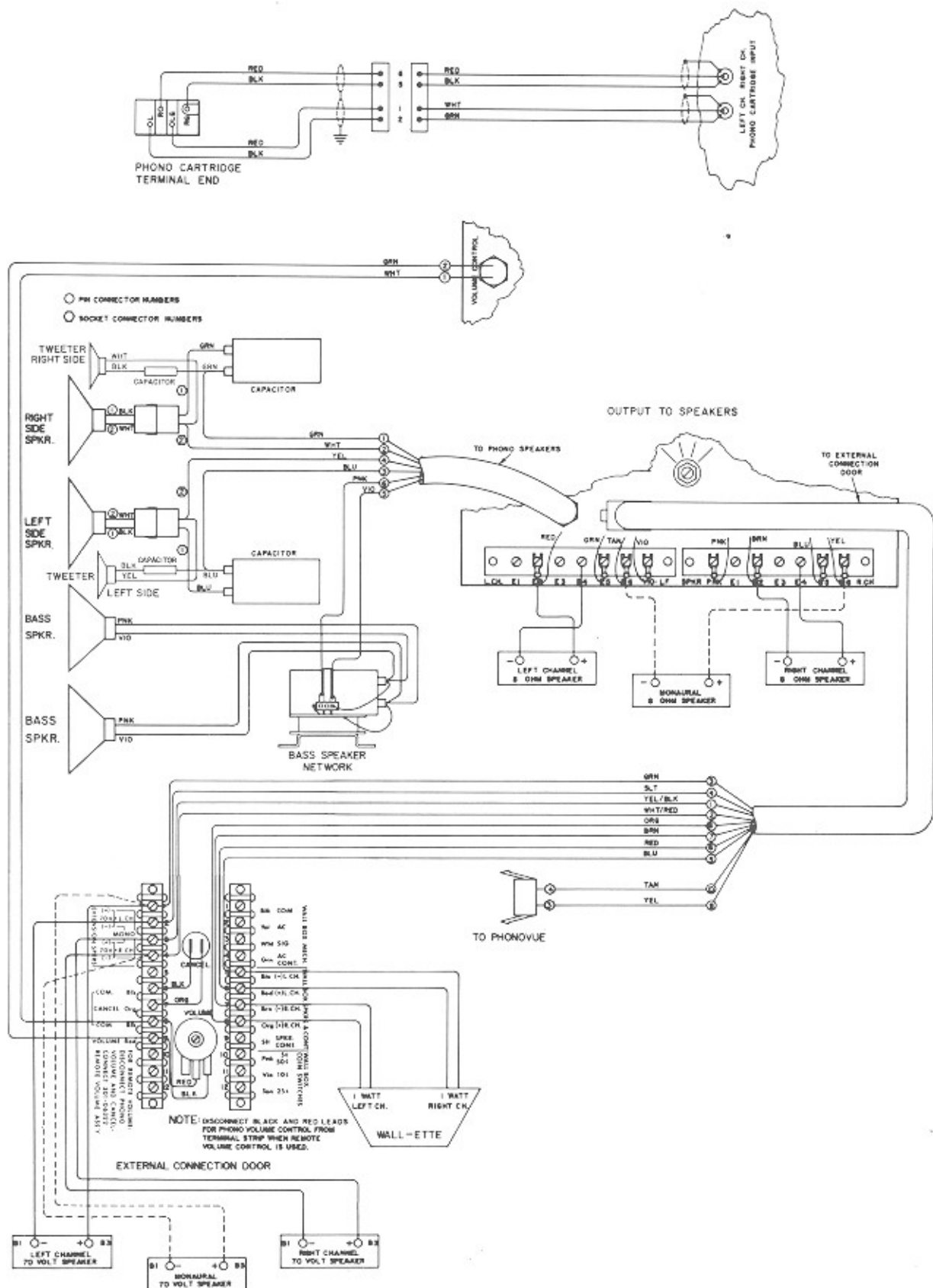
### CHECKOUT AND PRICING

#### Pricing

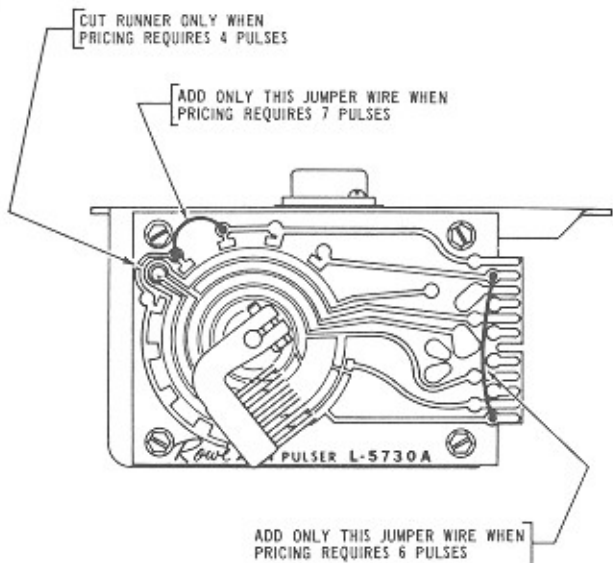
The credit and pricing arrangement for the MM-6 is different from the MM-5 due to the slide switches on the service control center. If a change in pricing is desired, refer to the price of play programming procedure on page 7.



FRONT DOOR LATCH



## STEREO ROUND SOUND SYSTEM


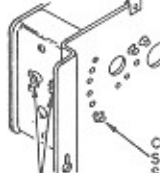
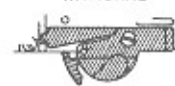



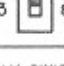


STEP			
<b>1</b>	SELECT PRICE CARD FROM COMBINATIONS SHOWN	<b>1</b> STANDARD PLAYS QUARTER.....2 PLAYS HALF DOLLAR..5 PLAYS  ALBUM SIDES QUARTER.....1 PLAY HALF DOLLAR..2 PLAYS PLUS 1 STANDARD PLAY  <small>200-14244</small>	
		STANDARD PLAYS QUARTER.....2 PLAYS HALF DOLLAR..5 PLAYS  PHONOVIEW MOVIES OR ALBUM SIDES QUARTER.....1 PLAY HALF DOLLAR..2 PLAYS PLUS 1 STANDARD PLAY  <small>200-66467</small>	
<b>2</b>	CREDIT UNIT - FRONT VIEW  		
	CREDIT UNIT - REAR VIEW  		
<b>3</b>	NICKEL DIVERTER POSITION  COIN ACCEPTORS		
		<b>FREE OR BLOCKED</b>	
<b>4</b>	NICKELS AND DIMES REJECTED? SEE SUPPLEMENT SHEET F-14097	<b>YES</b>	
<b>5</b>	PRICE SWITCH SETTINGS		
	SW 1	SWITCH # 1	<b>1</b>
	SW 2	SWITCH # 2	<b>4</b>
	SW 3	SWITCH # 3	<b>7</b>
<b>6</b>	EXTRA PLAY SWITCH POSITION IF MAF MONEY METER IS USED	<b>NO</b>	
<b>7</b>	IF NO MONEY METER IS USED, IS BONUS RELAY REQUIRED?	<b>NO</b>	
<b>8</b>	200-66390 2-QUARTER CREDIT WHEEL REQUIRED?	<b>NO</b>	

\* THIS PRICING REQUIRES CREDIT UNIT WIPER TO BE ADJUSTED TO MINUS ONE CREDIT WHEN TURNED ALL THE WAY COUNTER-CLOCKWISE MANUALLY.

# G PROCEDURE

2	3	4	5	6	7	8
STANDARD PLAYS QUARTER.....2 PLAYS HALF DOLLAR OR 2 QUARTERS...5 PLAYS DOLLAR BILL...12 PLAYS ALBUM SIDES QUARTER.....1 PLAY HALF DOLLAR OR 2 QUARTERS...2 PLAYS PLUS 1 STANDARD PLAY DOLLAR BILL...6 PLAYS  200-66475	STANDARD PLAYS QUARTER.....2 PLAYS HALF DOLLAR OR 2 QUARTERS...5 PLAYS DOLLAR BILL...12 PLAYS ALBUM SIDES QUARTER.....1 PLAY HALF DOLLAR OR 2 QUARTERS...2 PLAYS PLUS 1 STANDARD PLAY DOLLAR BILL...6 PLAYS  200-66469	STANDARD PLAYS QUARTER.....2 PLAYS HALF DOLLAR OR 2 QUARTERS...5 PLAYS ALBUM SIDES QUARTER.....1 PLAY HALF DOLLAR OR 2 QUARTERS...2 PLAYS PLUS 1 STANDARD PLAY  200-14602	STANDARD PLAYS QUARTER.....2 PLAYS 2 QUARTERS...5 PLAYS 4 QUARTERS...11 PLAYS  200-66472	STANDARD PLAYS QUARTER.....2 PLAYS HALF DOLLAR OR 2 QUARTERS...5 PLAYS DOLLAR BILL...11 PLAYS ALBUM SIDES QUARTER.....1 PLAY HALF DOLLAR OR 2 QUARTERS...2 PLAYS PLUS 1 STANDARD PLAY DOLLAR BILL...5 PLAYS PLUS 1 STANDARD PLAY  200-14604	STANDARD PLAYS QUARTER.....2 PLAYS HALF DOLLAR OR 2 QUARTERS...6 PLAYS  200-66473	STANDARD PLAYS QUARTER.....2 PLAYS HALF DOLLAR OR 2 QUARTERS...6 PLAYS DOLLAR BILL...14 PLAYS ALBUM SIDES QUARTER.....1 PLAY HALF DOLLAR OR 2 QUARTERS...3 PLAYS  200-66478
STANDARD PLAYS QUARTER.....2 PLAYS HALF DOLLAR OR 2 QUARTERS...5 PLAYS DOLLAR BILL...14 PLAYS ALBUM SIDES QUARTER.....1 PLAY HALF DOLLAR OR 2 QUARTERS...2 PLAYS PLUS 1 STANDARD PLAY DOLLAR BILL...7 PLAYS  200-66468	THIS PRICING REQUIRES 401-05801 2-QUARTER ADAPTER SWITCH SETTING - 2	STANDARD PLAYS QUARTER.....2 PLAYS HALF DOLLAR OR 2 QUARTERS...5 PLAYS DOLLAR BILL...14 PLAYS ALBUM SIDES QUARTER.....1 PLAY HALF DOLLAR OR 2 QUARTERS...2 PLAYS PLUS 1 STANDARD PLAY DOLLAR BILL...7 PLAYS  200-66470	STANDARD PLAYS QUARTER.....2 PLAYS HALF DOLLAR OR 2 QUARTERS...5 PLAYS  200-66471	STANDARD PLAYS QUARTER.....2 PLAYS HALF DOLLAR OR 2 QUARTERS...5 PLAYS DOLLAR BILL...11 PLAYS PHONOVOUE MOVIES OR ALBUM SIDES QUARTER.....1 PLAY HALF DOLLAR OR 2 QUARTERS...2 PLAYS PLUS 1 STANDARD PLAY DOLLAR BILL...5 PLAYS PLUS 1 STANDARD PLAY 200-66474	STANDARD PLAYS QUARTER.....2 PLAYS HALF DOLLAR OR 2 QUARTERS...6 PLAYS  ALBUM SIDES QUARTER.....1 PLAY HALF DOLLAR OR 2 QUARTERS...3 PLAYS  200-66476	
THIS PRICING REQUIRES WIRING CHANGE IN BILL ACCEPTOR FOR 7 PULSES SEE AT LEFT	THIS PRICING REQUIRES WIRING CHANGE IN BILL ACCEPTOR FOR 6 PULSES SEE AT LEFT	STANDARD PLAYS QUARTER.....2 PLAYS HALF DOLLAR OR 2 QUARTERS...5 PLAYS PHONOVOUE MOVIES OR ALBUM SIDES QUARTER.....1 PLAY HALF DOLLAR OR 2 QUARTERS...2 PLAYS PLUS 1 STANDARD PLAY  200-66471		THIS PRICING REQUIRES WIRING CHANGE IN BILL ACCEPTOR FOR 4 PULSES SEE AT LEFT	STANDARD PLAYS QUARTER.....2 PLAYS 2 QUARTERS...6 PLAYS 4 QUARTERS...14 PLAYS  200-66477	THIS PRICING REQUIRES WIRING CHANGE IN BILL ACCEPTOR FOR 4 PULSES SEE AT LEFT
<b>2</b>	<b>2</b>	<b>3</b>	<b>3</b>	<b>3</b>	<b>4*</b>	<b>4*</b>
<b>5</b>	<b>5</b>	<b>6</b>	<b>6</b>	<b>6</b>	<b>8*</b>	<b>8*</b>
<b>1</b>	<b>1</b>	<b>1</b>	<b>1</b>	<b>1</b>	<b>1</b>	<b>1</b>
<b>2</b>	<b>2</b>	<b>2</b>	<b>1</b>	<b>2</b>	<b>2</b>	<b>2</b>
<b>FREE OR BLOCKED</b>	<b>FREE OR BLOCKED</b>	<b>FREE OR BLOCKED</b>	<b>FREE OR BLOCKED</b>	<b>FREE OR BLOCKED</b>	<b>FREE OR BLOCKED</b>	<b>FREE OR BLOCKED</b>
<b>YES</b>	<b>YES</b>	<b>YES</b>	<b>YES</b>	<b>YES</b>	<b>YES</b>	<b>YES</b>
<b>1</b>	<b>1</b>	<b>1</b>	<b>1</b>	<b>1</b>	<b>1</b>	<b>1</b>
<b>4</b>	<b>4</b>	<b>4</b>	<b>4</b>	<b>4</b>	<b>4</b>	<b>4</b>
<b>7</b>	<b>7</b>	<b>7</b>	<b>7</b>	<b>7</b>	<b>7</b>	<b>7</b>
<b>NO</b>	<b>NO</b>	<b>NO</b>	<b>NO</b>	<b>NO</b>	<b>NO</b>	<b>NO</b>
<b>NO</b>	<b>NO</b>	<b>NO</b>	<b>NO</b>	<b>NO</b>	<b>NO</b>	<b>NO</b>
<b>NO</b>	<b>NO</b>	<b>YES</b>	<b>YES</b>	<b>YES</b>	<b>YES</b>	<b>YES</b>

STEP		9	10	11	12
<b>1</b>	SELECT PRICE CARD FROM COMBINATIONS SHOWN	STANDARD PLAYS 10¢.....1 PLAY QUARTER.....3 PLAYS HALF DOLLAR..7 PLAYS ALBUM SIDES QUARTER.....1 PLAY HALF DOLLAR..2 PLAYS PLUS 1 STANDARD PLAY  200-74807	STANDARD PLAYS 10¢.....1 PLAY QUARTER.....3 PLAYS HALF DOLLAR..7 PLAYS DOLLAR BILL..15 PLAYS ALBUM SIDES QUARTER.....1 PLAY HALF DOLLAR..2 PLAYS PLUS 1 STANDARD PLAY DOLLAR BILL...5 PLAYS  200-74802	STANDARD PLAYS 10¢.....1 PLAY QUARTER.....3 PLAYS HALF DOLLAR..6 PLAYS ALBUM SIDES QUARTER.....1 PLAY HALF DOLLAR..2 PLAYS  200-66487	STANDARD PLAYS 10¢.....1 PLAY QUARTER.....3 PLAYS HALF DOLLAR..6 PLAYS ALBUM SIDES QUARTER.....1 PLAY PLUS 1 ST HALF DOLLAR  200-6
<b>2</b>	<p>CREDIT UNIT - FRONT VIEW</p>  <p>CREDIT STOP COIL MOUNTING SCREWS CREDIT STOP SCREW</p> <p>CREDIT UNIT - REAR VIEW</p>  <p>CANCEL STOP COIL MOUNTING SCREWS CANCEL STOP SCREW</p> <p>4 CREDIT STOP COIL SLOT 3 2</p> <p>○9 ○8 ○7 ○6 ○5 ○4 ○3 ○2</p> <p>3 CANCEL STOP COIL SLOT 2 1</p> <p>○6 ○5 ○4 ○3 ○2 ○1</p>	STANDARD PLAYS 10¢.....1 PLAY QUARTER.....3 PLAYS HALF DOLLAR..7 PLAYS PHONOVUE MOVIES OR ALBUM SIDES QUARTER.....1 PLAY HALF DOLLAR..2 PLAYS PLUS 1 STANDARD PLAY  200-66479	STANDARD PLAYS 10¢.....1 PLAY QUARTER.....3 PLAYS HALF DOLLAR..7 PLAYS DOLLAR BILL..15 PLAYS PHONOVUE MOVIES OR ALBUM SIDES QUARTER.....1 PLAY HALF DOLLAR..2 PLAYS PLUS 1 STANDARD PLAY DOLLAR BILL...5 PLAYS  200-66480		STANDARD PLAYS 10¢.....1 PLAY QUARTER.....3 PLAYS HALF DOLLAR..6 PLAYS ALBUM SIDES QUARTER.....1 PLAY PLUS 1 ST HALF DOLLAR  200-6
<b>3</b>	<p>NICKEL DIVERTER POSITION</p> <p>COIN ACCEPTORS NATIONAL</p>  <p>FREE</p>  <p>BLOCKED</p>	<b>FREE</b>	<b>FREE</b>	<b>FREE</b>	<b>FR</b>
<b>4</b>	NICKELS AND DIMES REJECTED? SEE SUPPLEMENT SHEET F-14097	<b>NO</b>	<b>NO</b>	<b>NO</b>	<b>N</b>
<b>5</b>	<p>PRICE SWITCH SETTINGS</p> <p>SW 1  SWITCH # 1</p> <p>SW 2  SWITCH # 2</p> <p>SW 3  SWITCH # 3</p>	<b>2</b>	<b>5</b>	<b>7</b>	<b>2</b>
<b>6</b>	EXTRA PLAY SWITCH POSITION IF MAF MONEY METER IS USED	<b>NO</b>	<b>NO</b>	<b>NO</b>	<b>N</b>
<b>7</b>	IF NO MONEY METER IS USED, IS BONUS RELAY REQUIRED?	<b>NO</b>	<b>NO</b>	<b>NO</b>	<b>N</b>

	13	14	15
AYS PLAY PLAYS PLAYS ES PLAY D PLAY PLAYS	STANDARD PLAYS 15¢.....1 PLAY QUARTER.....2 PLAYS HALF DOLLAR...5 PLAYS ALBUM SIDES QUARTER.....1 PLAY HALF DOLLAR...3 PLAYS  200-66484	STANDARD PLAYS QUARTER.....2 PLAYS HALF DOLLAR...5 PLAYS DOLLAR BILL...11 PLAYS ALBUM SIDES QUARTER.....1 PLAY HALF DOLLAR...3 PLAYS DOLLAR BILL...6 PLAYS  200-66486	STANDARD PLAYS 10¢.....1 PLAY QUARTER.....3 PLAYS HALF DOLLAR...7 PLAYS DOLLAR BILL...15 PLAYS  200-66487
AYS PLAY PLAYS PLAYS WIES IDES PLAY D PLAY PLAYS	STANDARD PLAYS 15¢.....1 PLAY QUARTER.....2 PLAYS HALF DOLLAR...5 PLAYS DOLLAR BILL...11 PLAYS ALBUM SIDES QUARTER.....1 PLAY HALF DOLLAR...3 PLAYS DOLLAR BILL...6 PLAYS  200-66485		STANDARD PLAYS 10¢.....1 PLAY  QUARTER.....3 PLAYS HALF DOLLAR...7 PLAYS  200-66488
	<b>2</b>	<b>2</b>	<b>3</b>
	<b>6</b>	<b>6</b>	<b>7</b>
	<b>3</b>	<b>3</b>	<b>1</b>
	<b>6</b>	<b>6</b>	<b>1</b>
<b>E</b>	<b>BLOCKED</b>	<b>FREE OR BLOCKED</b>	<b>FREE</b>
	<b>NO</b>	<b>YES</b>	<b>NO</b>
	<b>3</b>	<b>3</b>	<b>2</b>
	<b>6</b>	<b>6</b>	<b>5</b>
	<b>8</b>	<b>8</b>	<b>7</b>
	<b>YES</b>	<b>YES</b>	<b>NO</b>
	<b>YES</b>	<b>YES</b>	<b>NO</b>