

PRINCIPLES OF OPERATION

Introduction

The operation of components is described only where different from the MM-5. All other system and component descriptions contained in the MM-5 manual apply equally to the MM-6.

Credit and Pricing System

Pricing Switches. The three pricing switches permit the phonograph to operate with various pricing combinations. The three slide-type pricing switches are located on the service control panel. Switch positions 1 through 8 are marked on the panel adjacent to the switches with switch #1 marked 1, 2, and 3; switch #2 marked 4, 5, and 6; switch #3 marked 7 and 8. Switches #1 and #2 control power to the credit unit commutator board. Switch #3 controls power to the credit unit fixed and adjustable credit stop coils.

A mechanism service switch mounted on the service panel enables the record changer mechanism to be scanned independently of the selection system for

service and maintenance. A bonus relay and 15¢ price adapter are required for some special pricing combinations.

Sound System

Speaker System. The phonograph does not require extension speakers to obtain full stereo reproduction. Sound is projected from both the front and sides of the cabinet to form the stereo image. Speaker location within the cabinet determines this effect.

The speaker system consists of two 10-inch low frequency speakers, two 6-inch mid-frequency speakers, two 3-inch high frequency speakers, coupling capacitors, and a crossover network to direct the various frequency signals to the correct speakers.

The 10-inch speakers are mounted in a duct-tuned bass reflex enclosure at the bottom of the cabinet. The 6-inch speakers are mounted in sealed, fiber-glass-damped enclosures facing diagonally on each side of the selector assembly. The 3-inch speakers are in the top door assembly facing the front of the phonograph.

SECTION 4 MAINTENANCE

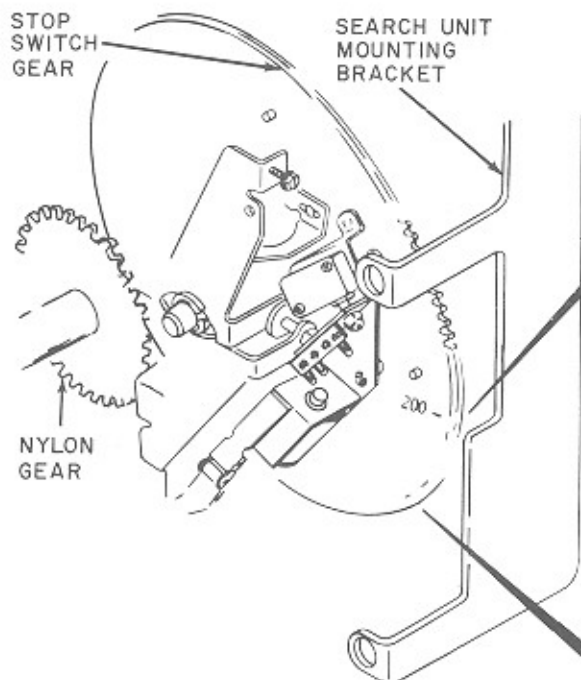
ADJUSTMENTS

The Stop Switch Assembly and Search Wiper adjustments contained on the following pages are applicable to both MM-5 and MM-6 phonographs. These procedures are revised versions of those appearing in the MM-5 manual. All other adjustments contained in the MM-5 manual apply equally to the MM-6.

STOP SWITCH ASSEMBLY ADJUSTMENTS (CONTINUED)

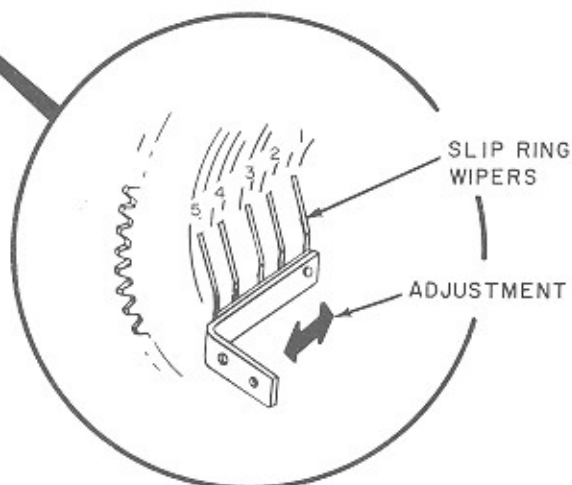
Align stop switch.

1. Lock magazine at selection A1. (Rotate the magazine until selection A1 is at top center. Engage the detent, locking the magazine in place.)



2. Mesh the stopping switch gear with the large nylon gear so that the 200 index mark on the stopping switch gear is in line with the step on the search unit mounting bracket.

3. Check to see that the slip ring wipers are properly aligned with their respective slip rings. If necessary loosen the slip ring wiper assembly mounting screw and move the entire assembly horizontally until the ends of the wipers are tracking in the center of the rings.



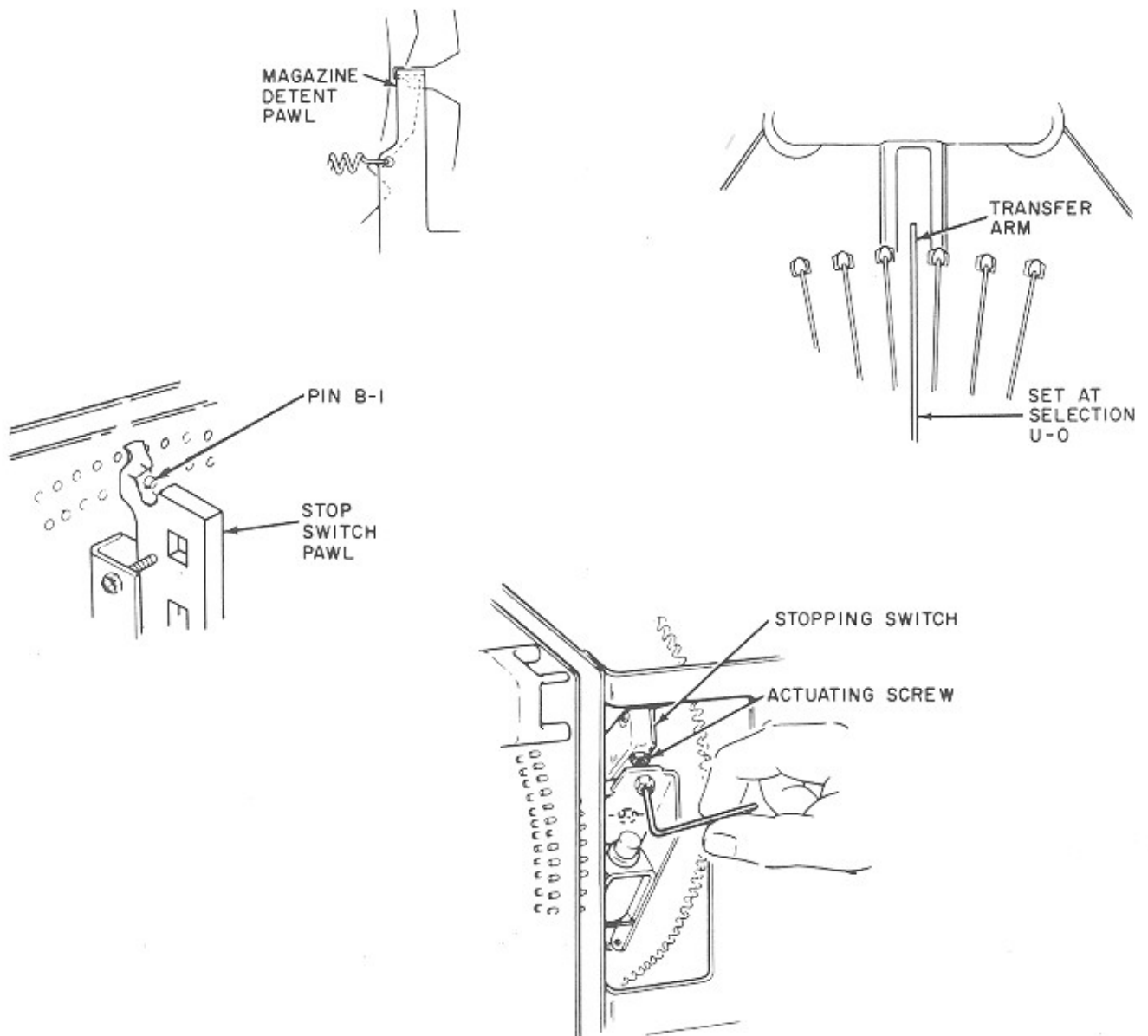
NOTE: When installing a replacement stop switch be sure to perform the procedures on the following page.

STOP SWITCH ASSEMBLY ADJUSTMENTS (CONTINUED)

Adjust stop switch actuating screw.

NOTE: This adjustment requires that the search unit is properly adjusted (refer to pages 4-20 through 4-27 in MM-5 service manual).

- a. Manually rotate record magazine and lock in position at selection U-O.
- b. Manually set search unit at pin B1.
- c. Locate stop switch pawl on pin B1 as shown.
- d. Back stopping switch actuating screw out past the point where switch clicks (releases).
- e. Turn stopping switch actuating screw in until switch just clicks (actuates); then turn screw in $1\frac{2}{3}$ turns further.
- f. Turn on mechanism service switch and cycle record changer at least twice to check stopping switch adjustment.



SEARCH WIPER ADJUSTMENTS (CONTINUED)

Position Outside (Number) on Commutator Board.

- Bottom sprag relay S1 tooth in sprag wheel notch. Check that short select coil arm is up.
- Check that wiper arm side with three blades on it is positioned on segment 1, as shown.
- If adjustment is necessary, loosen the hub setscrew and, while holding sprag relay S1 tooth in position as in step a, rotate wiper arm assembly to align wipers.
- Tighten setscrews.

NOTE: When changing position of wiper arm assembly, be sure to maintain proper contact pressure.

