

SEEBURG

TORMAT SELECTOR UNITS, Types TSU6 and TSU7

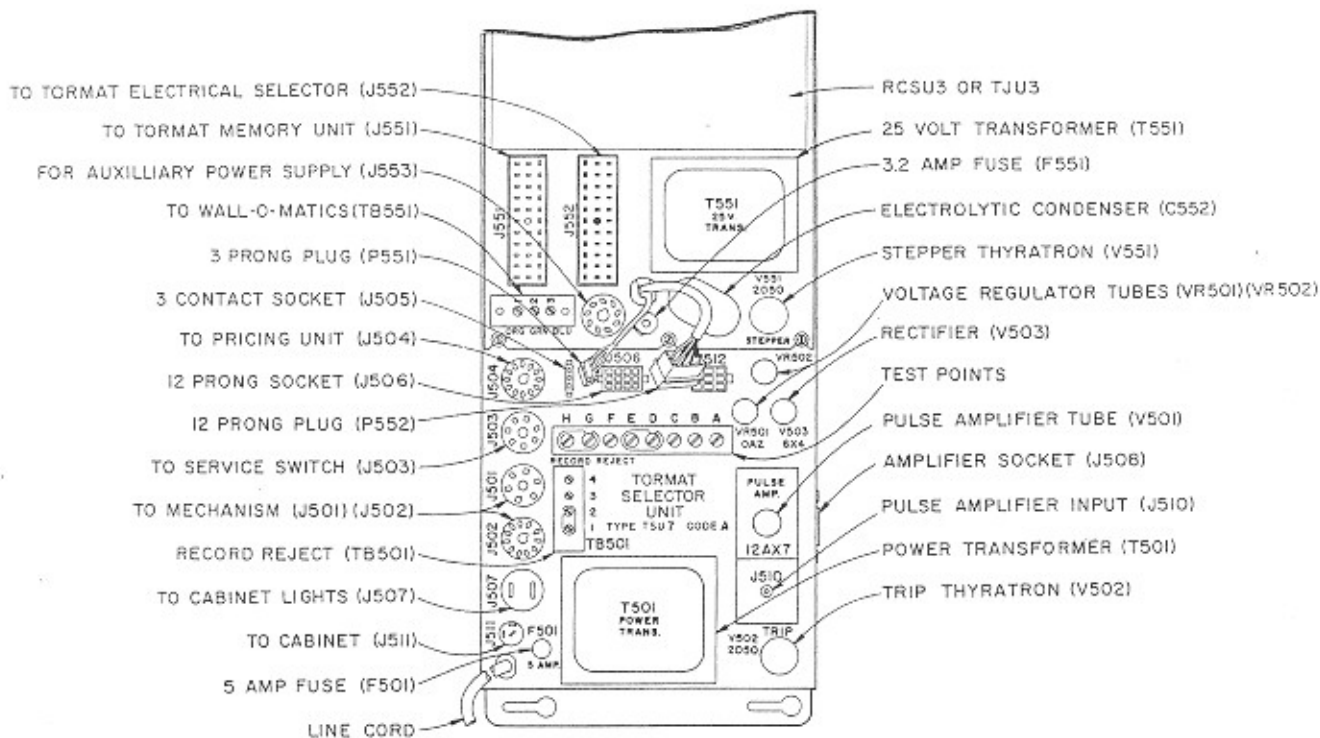
The Tormat Selector Units, Types TSU6 and TSU7 are the power distribution center and junction for control circuits of Select-O-Matic phonographs. The Type TSU7 is used with conventional phonographs having Electrical Selector only or Electrical Selector in combination with remote control. The Type TSU6 is used with the R.C. Special (Hideaway) Model where no Electrical Selector is used and differs from the TSU7 in the primary power distribution as shown in the diagrams. The TSU6 and TSU7 are equipped with a four screw terminal strip for connecting the remote record cancel circuits associated with remote volume control of the phonographs. The fourth terminal provides for connecting a DC power take-off for operation of a motor-driven volume control.

Power is supplied to the Unit through a line cord and main switch and is distributed at line voltage or from the secondaries of a transformer to the electrical units of the complete phonograph. All connections between the Tormat Selector Units and other units within the phonograph cabinet are made with plugs that are keyed by shape or number of contacts so they cannot be incorrectly connected. Units external to the phonograph cabinet are connected to the Unit

by means of screw-type terminal strips.

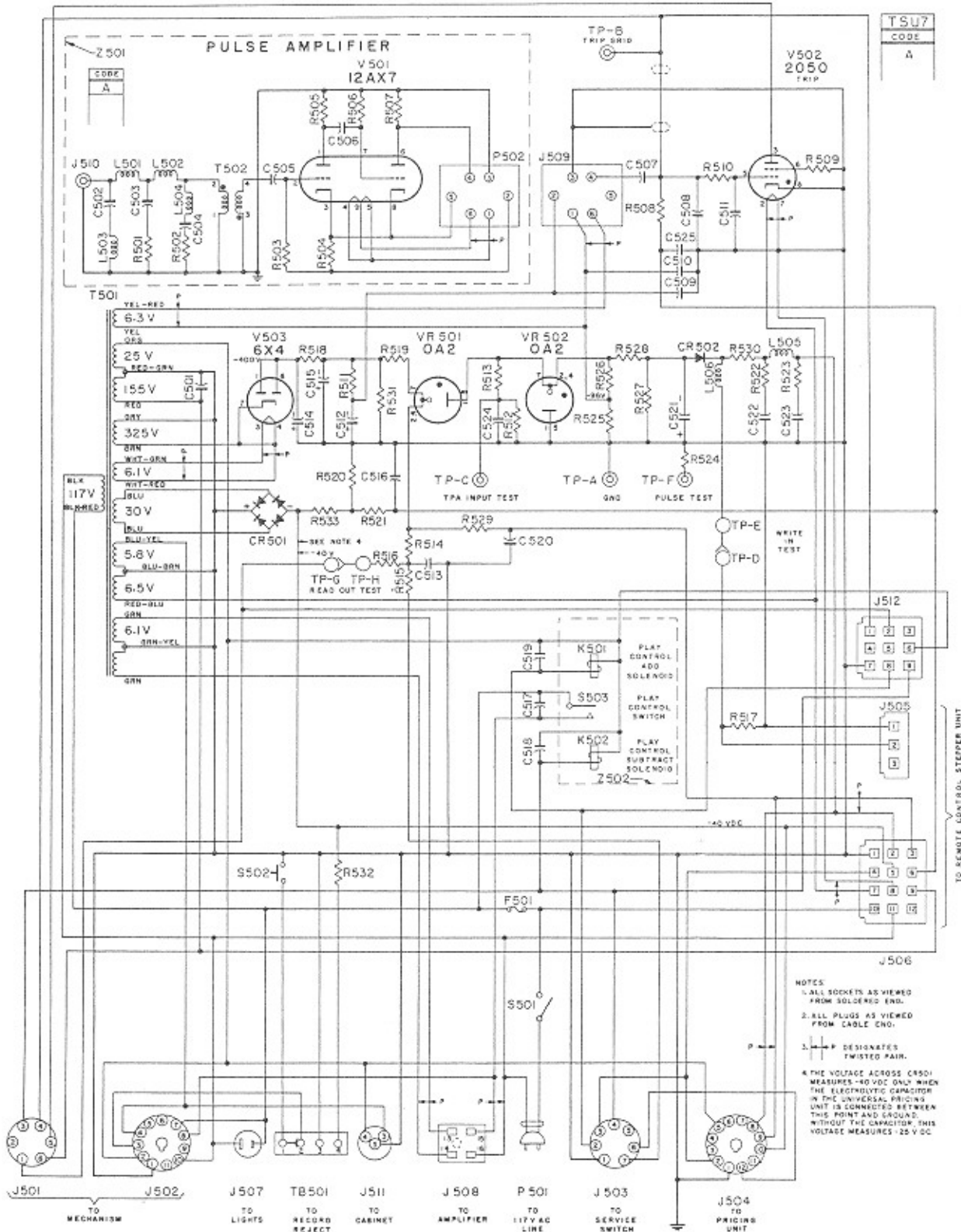
A Tormat Junction Unit, Type TJU3, or a Remote Control Stepper Unit, Type RCSU3, is used with the Tormat Selector Unit. The Tormat Junction Unit is used when the Selector Unit is in a phonograph that is to be operated only from an Electrical Selector and without provision for remote control operation. It includes sockets for connection of the Electrical Selector and the Tormat Memory Unit for the phonograph selection system and some of the selection system test points.

The Remote Control Stepper Unit is used with the TSU6 and TSU7, whenever Electrical Selector and/or remote control operation is employed. It includes the connections, test points and pricing unit connections associated with the Tormat Junction Unit and, additionally, the steppers, Wall-O-Matic power supply and stepper control circuits necessary for full remote control selection. The Junction Unit or the Stepper Unit is mounted on the Selector Unit chassis with screws and all interconnections are made with plugs. A three-prong plug is used with the Junction Unit. The Stepper Unit has a 3-prong and a 12-prong plug for connections.



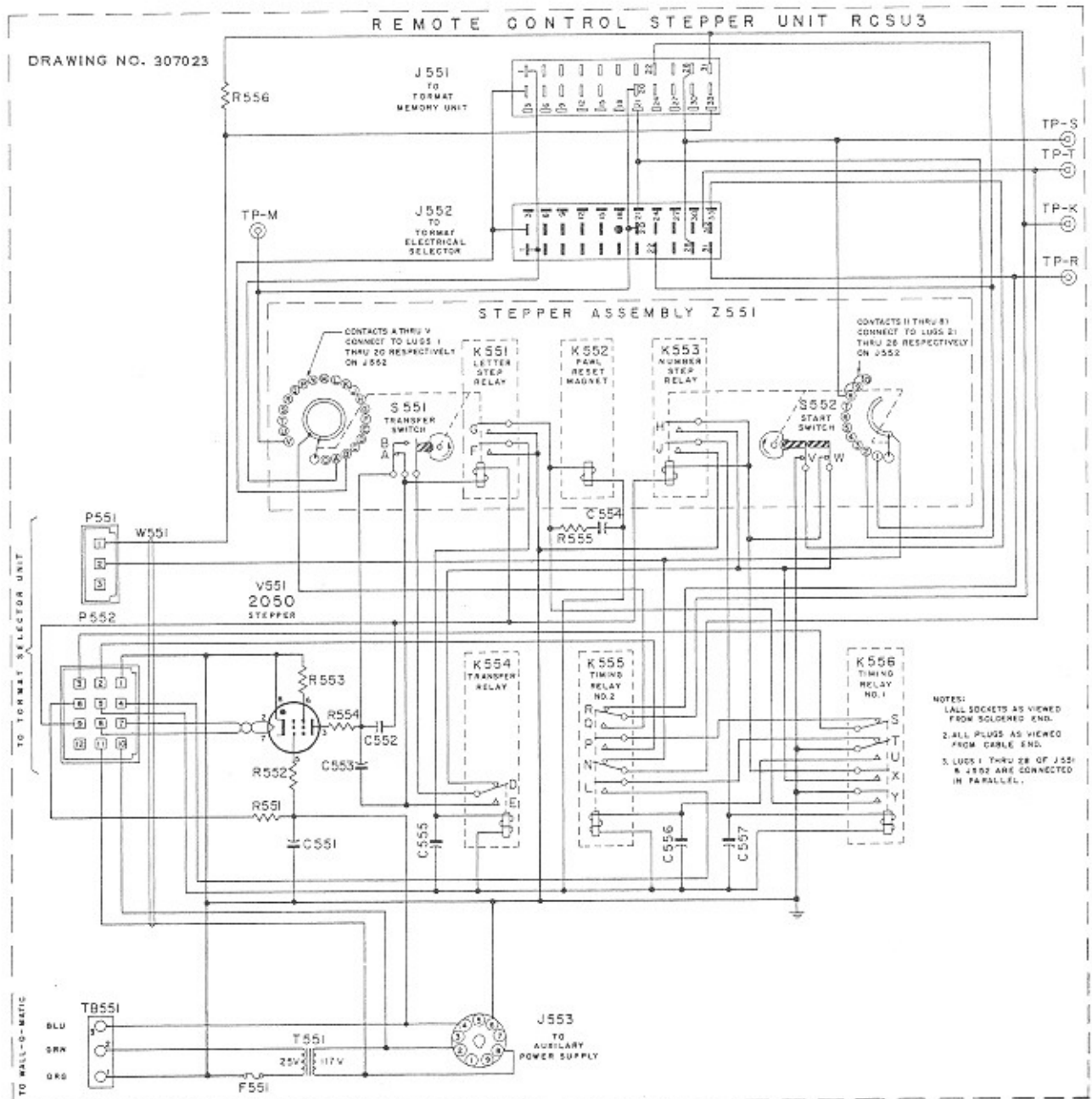
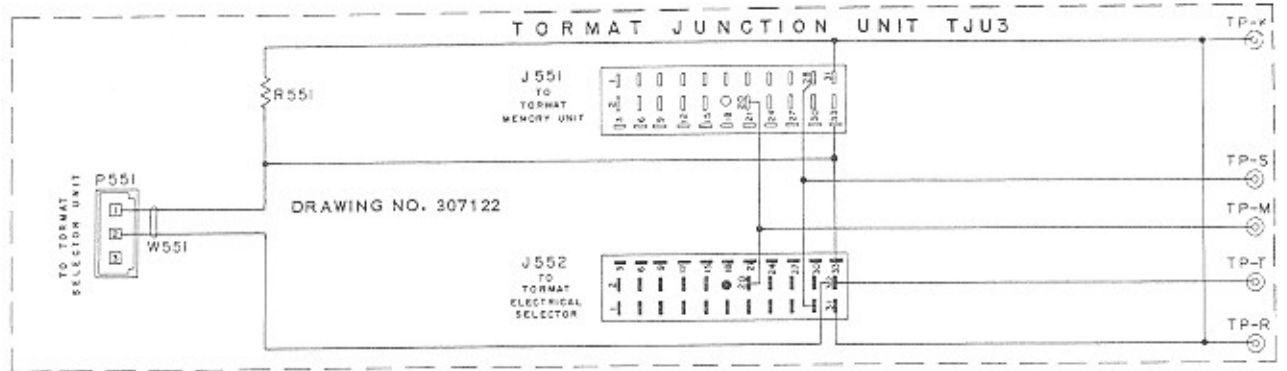
TORMAT SELECTOR UNITS, Types TSU6 and TSU7

DRAWING NO. 307237

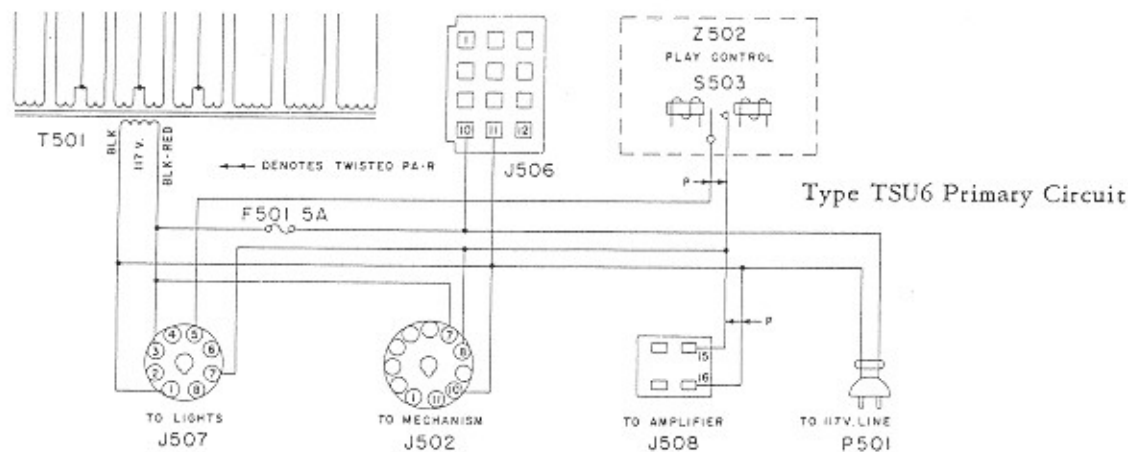


- NOTES
1. ALL SOCKETS AS VIEWED FROM SOLDERED END.
 2. ALL PLUGS AS VIEWED FROM CABLE END.
 3. P DESIGNATES TWISTED PAIR.
 4. THE VOLTAGE ACROSS CR501 MEASURES 40 VDC ONLY WHEN THE ELECTROLYTIC CAPACITOR IN THE UNIVERSAL PRICING UNIT IS CONNECTED BETWEEN THIS POINT AND GROUND. WITHOUT THE CAPACITOR, THIS VOLTAGE MEASURES 25 V DC.

TORMAT SELECTOR UNITS, Types TSU6 and TSU7



TORMAT SELECTOR UNITS, Types TSU6 and TSU7



Parts List (for Pages 13037 & 13038)

Item	Part No.	Description	Item	Part No.	Description	Item	Part No.	Description
C501	86154	0.02 Mfd 600 V. Paper	J512	84315	9 Contact Socket	R523	82617	47 Ohms ±5% ½W.
C502	86253	360 Mnf ±10% 500 V. Ceramic	J551	303528	33 Prong Socket	R524	82437	12,000 Ohms ±10% ½W.
C503	86252	1200 Mnf ±10% 500 V. Ceramic	J552	303529	33 Prong Plug	R525	82454	330,000 Ohms ±10% ½W.
C504	86259	360 Mnf ±10% 500 V. Ceramic	J553	84244	9 Prong Socket	R526	82451	180,000 Ohms ±10% ½W.
C505	86251	3000 Mnf 500 V. Ceramic	K501	303739	Play Control Add Solenoid	R527	82698	150,000 Ohms ±5% ½W.
C506	86030	0.05 Mfd ±10% 400 V. Paper	K502	303743	Play Control Subst. Solenoid	R528	82611	3,000 Ohms ±5% ½W.
C507	86248	0.15 Mfd ±10% 200 V. Paper	K551	303941	Letter Step Relay	R529	82998	270,000 Ohms ±10% 1W.
C508	86235	0.05 Mfd 200 V. Paper	K552	303944	Pawl Reset Magnet	R530	82617	47 Ohms ±5% ½W.
C509	86251	3000 Mnf 500 V. Ceramic	K553	303940	Number Step Relay	R531	82460	1 Meg. ±10% ½W.
C510	86313	0.01 Mfd 500 V. Ceramic	K554	303074	Transfer Relay	R532	±81217	120 Ohms ±10% 10 W.
C511	86255	2000 Mnf 500 V. Ceramic	K555	303764	Timing Relay No. 2	R533	±81201	250 Ohms ±10% 5 W.
C512	87637	10 Mfd 450 V. Lytic	K556	303762	Timing Relay No. 1	R533	±82427	1800 Ohms ±10% ½W.
C513	86296	0.15 Mfd ±10% 600 V. Paper	L501	303602	16µh Choke ±5%	R551	• 82439	18,000 Ohms ±10% ½W.
C514	87635	15 Mfd 450 V. Lytic	L502	303602	16µh Choke ±5%	R551	† 82448	100,000 Ohms ±10% ½W.
C515	87635	15 Mfd 450 V. Lytic	L503	303600	11µh Choke ±5%	R552	82436	10,000 Ohms ±10% ½W.
C516	87571	25 Mfd 50 V. Lytic	L504	303600	11µh Choke ±5%	R553	82440	22,000 Ohms ±10% ½W.
C517	86317	0.01 Mfd 1400 V. Ceramic	L505	303603	130µh Choke ±5%	R554	82838	100 Ohms ±10% 2 W.
C518	86313	0.01 Mfd 500 V. Ceramic	L506	303702	100µh Choke ±5%	R555	82403	18 Ohms ±10% ½W.
C519	86313	0.01 Mfd 500 V. Ceramic				R556	82439	18,000 Ohms ±10% ½W.
C520	86295	0.068 Mfd ±10% 600 V. Paper	P501	307152	Line Cord & Plug Assem.	S501	303112	Toggle Switch, S.P.S.T.
C521	87636	10 Mfd 150 V. Lytic	P502	303599	6 Prong Plug	S502	410486	Reject Switch
C522	86313	0.01 Mfd 500 V. Ceramic	P51	307049	3 Contact Plug	S503	303749	Play Control Switch
C523	86313	0.01 Mfd 500 V. Ceramic	P52	307048	12 Contact Plug	S551	303547	Transfer Switch
C524	86252	1200 Mnf ±10% 500 V. Ceramic	R501	82409	56 Ohms ±10% ½W.	S552	303794	Start Switch
C525	86251	3000 Mnf 500 V. Ceramic	R502	82409	56 Ohms ±10% ½W.	T501	307150	Power Transformer
C551	86235	0.05 Mfd 200 V. Paper	R503	82444	47,000 Ohms ±10% ½W.	T502	303457	Pulse Transformer
C552	86320	5 Mfd 300 V. Paper	R504	82610	6,200 Ohms ±5% ½W.	T551	307074	25 V. Transformer
C553	86250	5000 Mmfd 1000 V. Ceramic	R505	82456	470,000 Ohms ±10% ½W.	TB501	307326	4-Screw Terminal Board Assembly
C554	87611	300 Mfd 50 V. Lytic	R506	82469	5.5 Megohms ±10% ½W.	TB551	† 305309	3-Screw Terminal Board
C555	86235	0.05 Mfd 200 V. Paper	R507	82640	27,000 Ohms ±5% ½W.	V501	308120	12AX7 Vacuum Tube
C556	86235	0.05 Mfd 200 V. Paper	R508	82460	1.0 Megohm ±10% ½W.	V502	308003	2050 Thyatron
C557	86235	0.05 Mfd 200 V. Paper	R509	82440	22,000 Ohms ±10% ½W.	V503	308626	6 x 4 Vacuum Tube
CR501	400587	Selenium Rectifier	R510	82456	470,000 Ohms ±10% ½ W.	V551	308003	2050 Thyatron
CR502	309384	Silicon Rectifier	R511	82695	56,000 Ohms ±5% ½W.	VR501	308005	0A2 Voltage Regulator Tube
	303686	Alternate: IN358 Germanium Diode	R512	82449	120,000 Ohms ±10% ½W.	VR502	308005	0A2 Voltage Regulator Tube
F501	602411	5 Amp Fuse Type MTH	R513	82464	2.2 Megohm ±10% ½ W.			
F551	† 303713	3.2 Amp. Fuse Type GMQ 3-2/10	R514	82837	56,000 Ohms ±10% 2W.			
J501	84223	6 Prong Socket	R515	82432	4,700 Ohms ±10% ½W.			
J502	84318	11 Prong Socket	R516	82993	36 Ohms ±5% ½W.			
J503	84282	7 Prong Socket	R517	82439	18,000 Ohms ±10% ½W.			
J504	201275	12 Prong Socket	R518	81194	3,300 Ohm Fuse Resistor ±10% 5W.	W551	† 307127	Cable Assembly
J505	307154	3 Contact Socket				W551	• 307146	Cable Assembly
J506	307153	12 Contact Socket	R519	82636	2,700 Ohms ±10% ½W.	Z501	303590	Pulse Amplifier Unit
J507	† 11401	2 Prong Socket A.C.	R520	±82432	4,700 Ohms ±10% ½W.	Z502	303720	Play Control Assembly
J507	± 84306	8 Prong Socket	R520	± 82430	3,300 Ohms ±10% ½W.	Z551	† 307021	Stepper Assembly
J508	301020	4 Prong Socket	R521	82456	470,000 Ohms ±10% ½W.			
J509	301034	6 Prong Socket (Small)	R522	82617	47 Ohms ±5% ½W.			
J510	300152	Single Prong Socket						
J511	303555	3 Prong Miniature Socket						

± USED ON TSU6
 † USED ON TSU7
 † USED ON RCSU3
 • USED ON TJU3

TORMAT SELECTOR UNIT, TYPE TSU6, PART NO. 307240
 TORMAT SELECTOR UNIT, TYPE TSU7, PART NO. 307242
 REMOTE CONTROL STEPPER UNIT, TYPE RCSU3, PART NO. 307032
 TORMAT JUNCTION UNIT, TYPE TJU3, PART NO. 307091