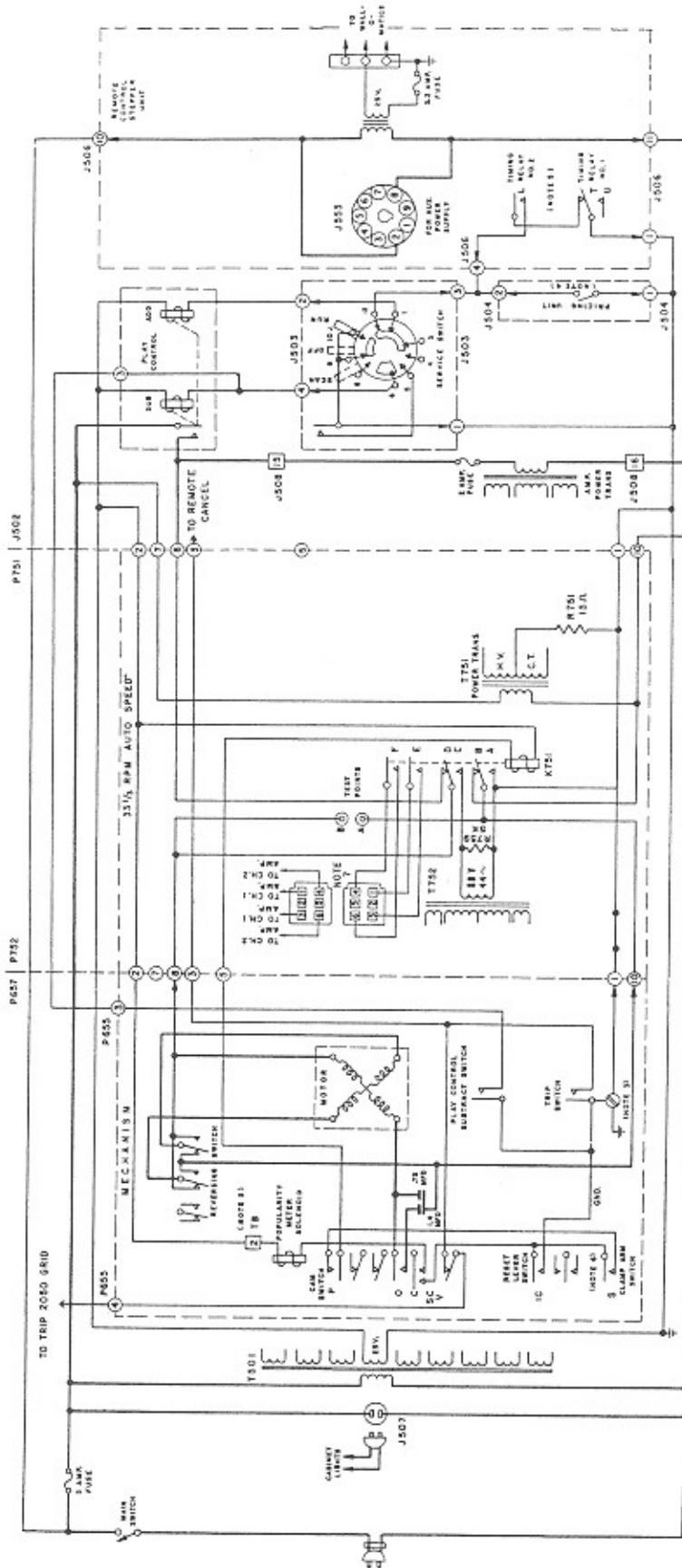


SELECT-O-MATIC DS100 and DS160 MODELS

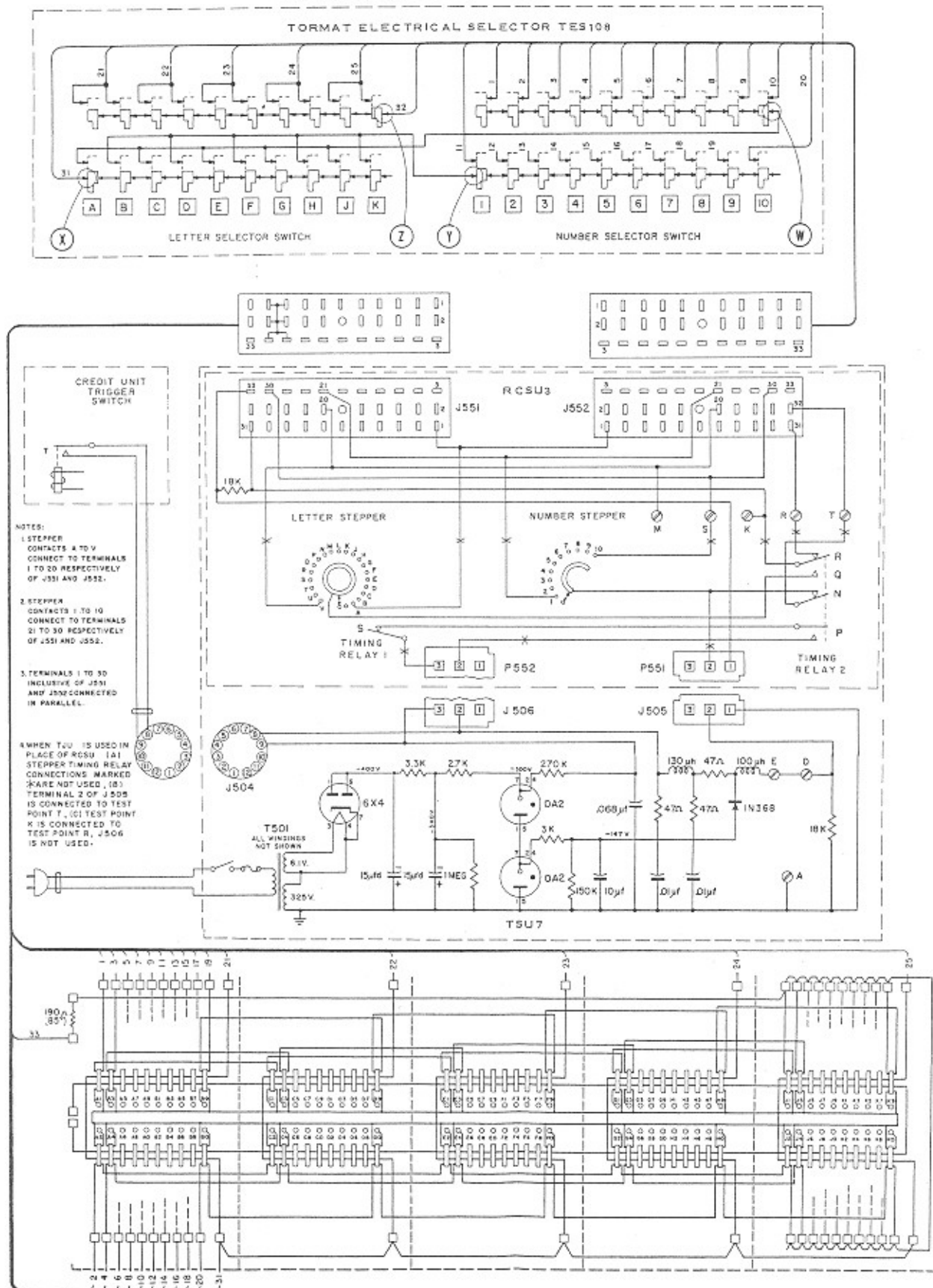


1. THIS SYMBOL INDICATES A SELECTOR LINE TURNOFF. THE NUMBER IN CIRCLE IS CONTACT OR TERMINAL NUMBER. AN ARROW INDICATES MAKING PLUG TERMINAL.
2. THIS SYMBOL INDICATES A TERMINAL STRIP ON MECHANISM CARRIAGE. THE NUMBER IN CIRCLE IS TERMINAL NUMBER. TERMINAL NUMBERING BEGINS WITH 1 AT BOTTOM OF STRIP.
3. CARRIAGE GROUND CONNECTION BELOW TERMINAL STRIP.
4. CIRCUIT MOMENTARILY CLOSED WHEN SELECTION IS MADE AT ELECTRICAL SELECTOR.
5. CIRCUIT MOMENTARILY CLOSED THROUGH L AND T WHEN SELECTION IS MADE BY REMOTE OPERATION.
6. OPENS WHEN 45 RPM RECORD IS CLAMPED.
7. DIRECTIONAL SPEAKER CONTROL SOCKET. SPEAKER TURNS ON WHEN 33 1/3 RECORD IS PLAYED.

Power and Control Wiring.

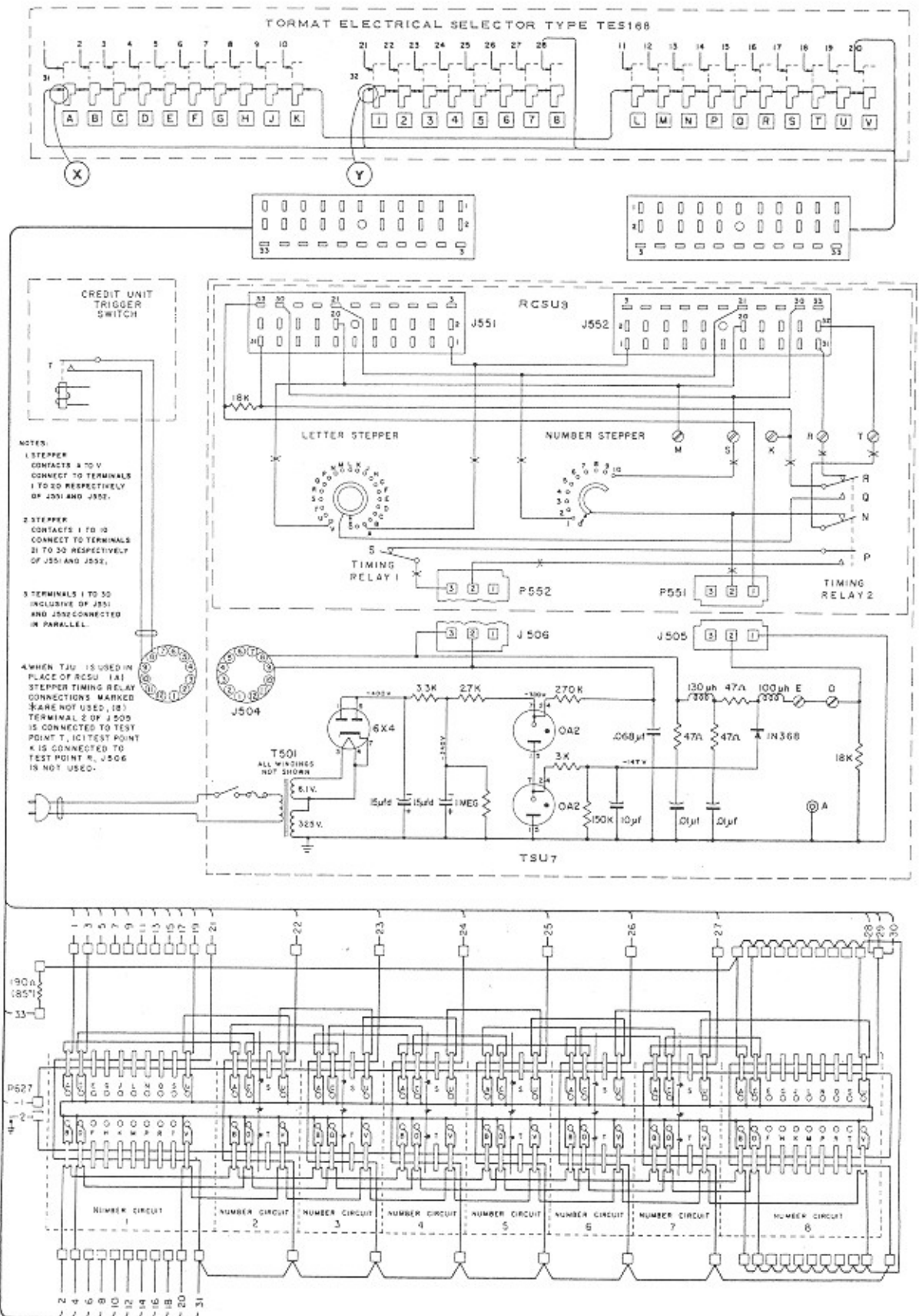
SELECT-O-MATIC DS100 and DS160 MODELS

WRITE-IN CIRCUITS, DS100 MODELS



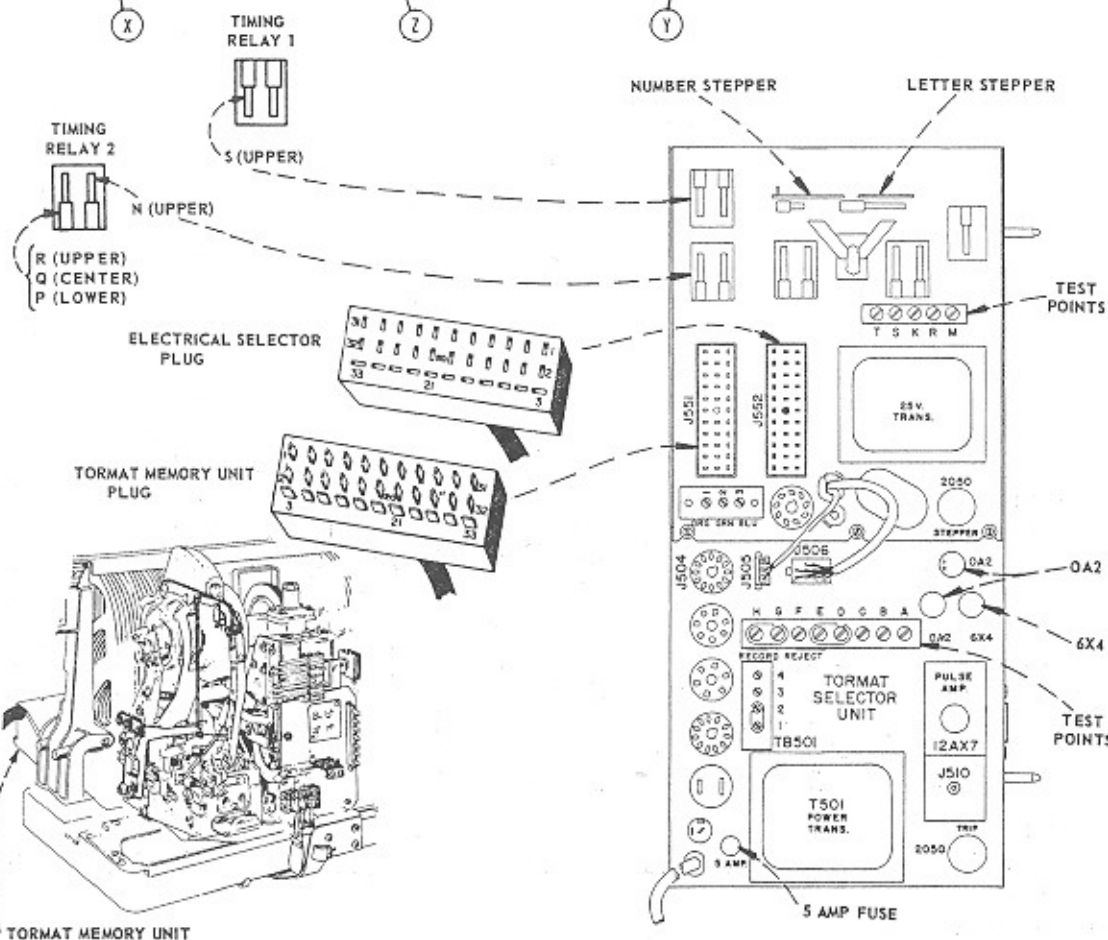
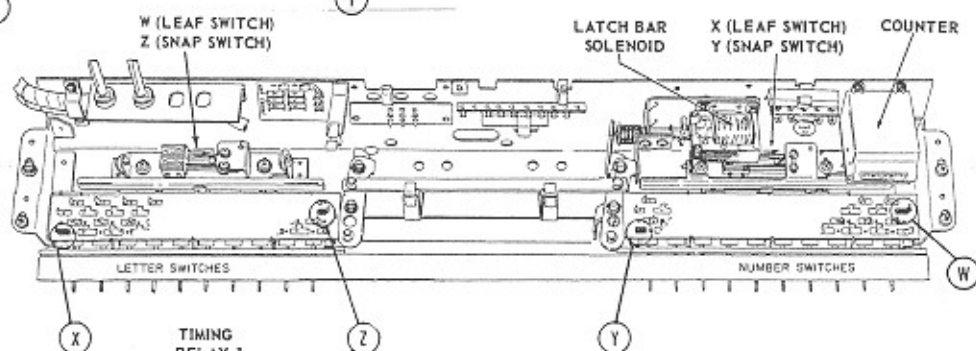
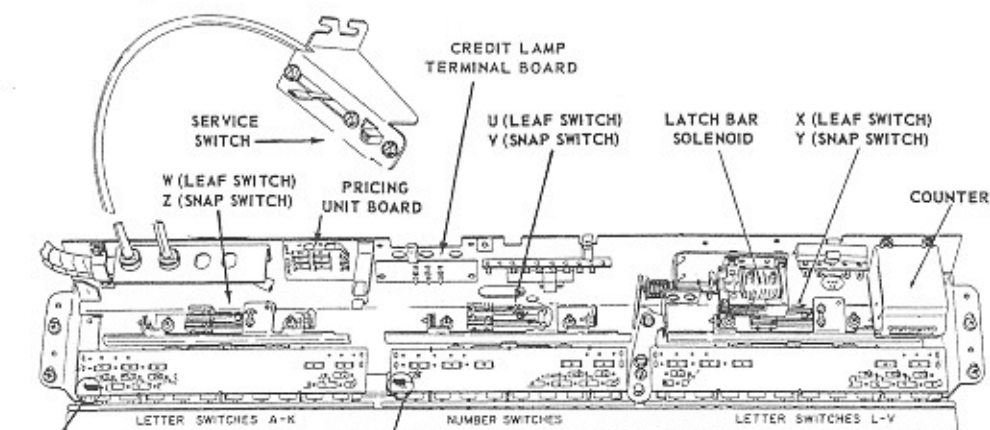
SELECT-O-MATIC DS100 and DS160 MODELS

WRITE-IN CIRCUITS, DS160 MODELS



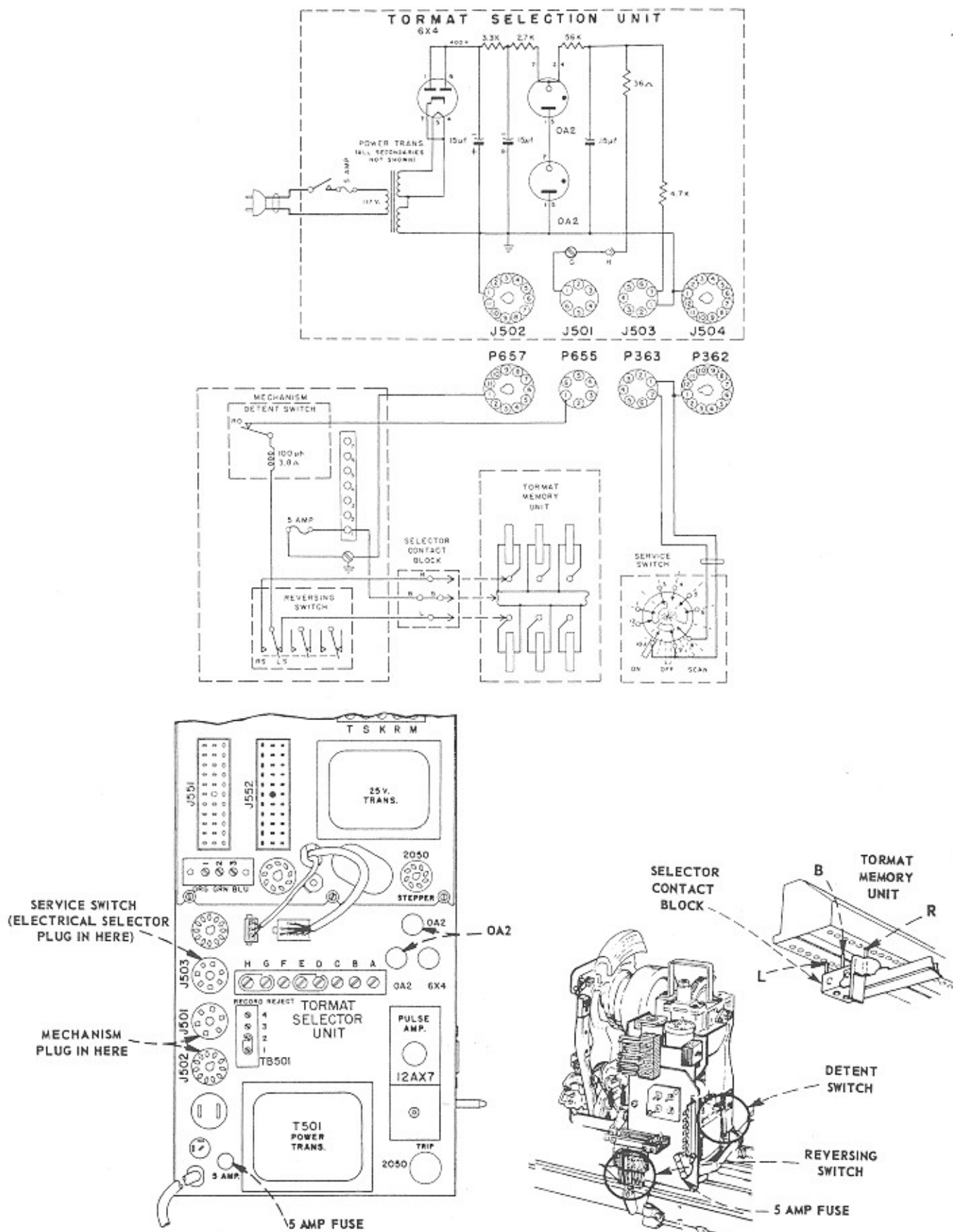
SELECT-O-MATIC DS100 and DS160 MODELS

WRITE-IN CIRCUIT COMPONENTS



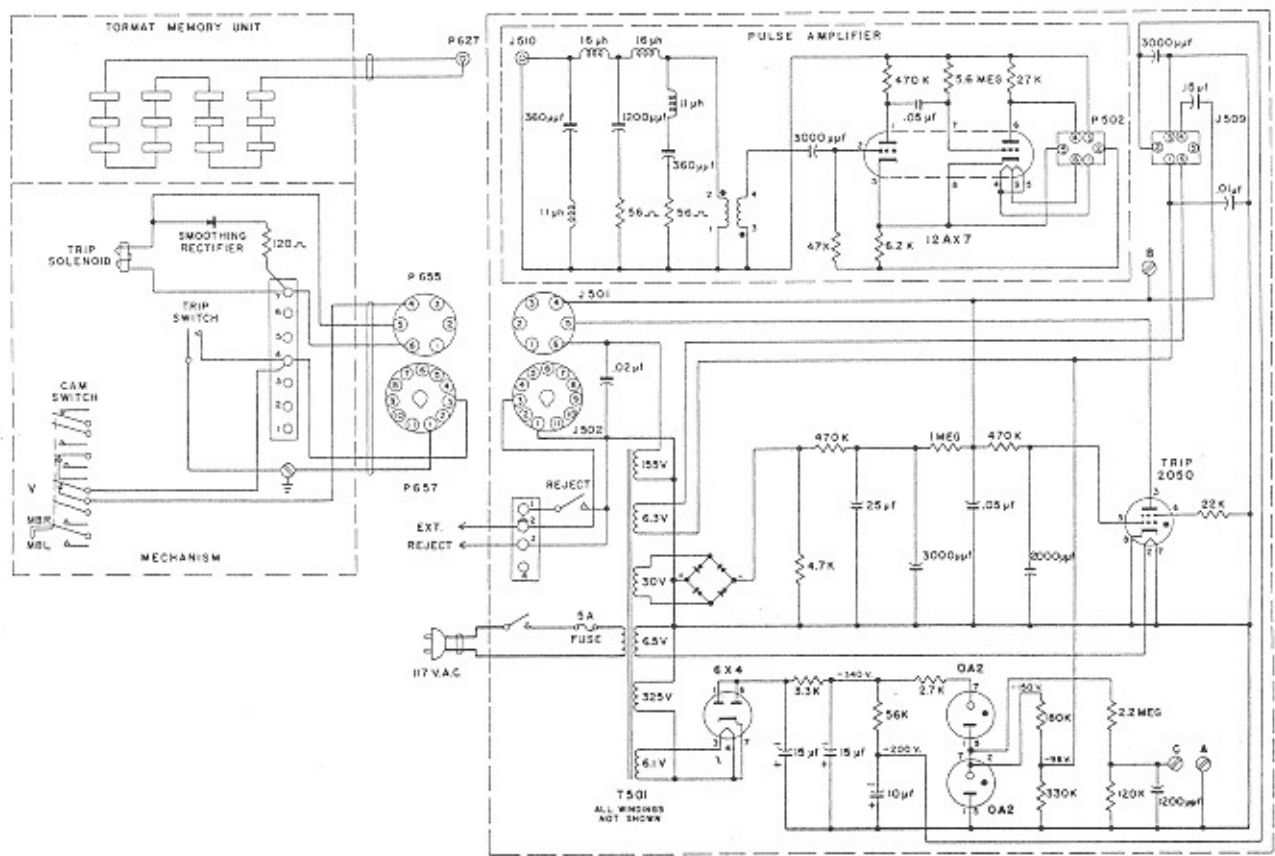
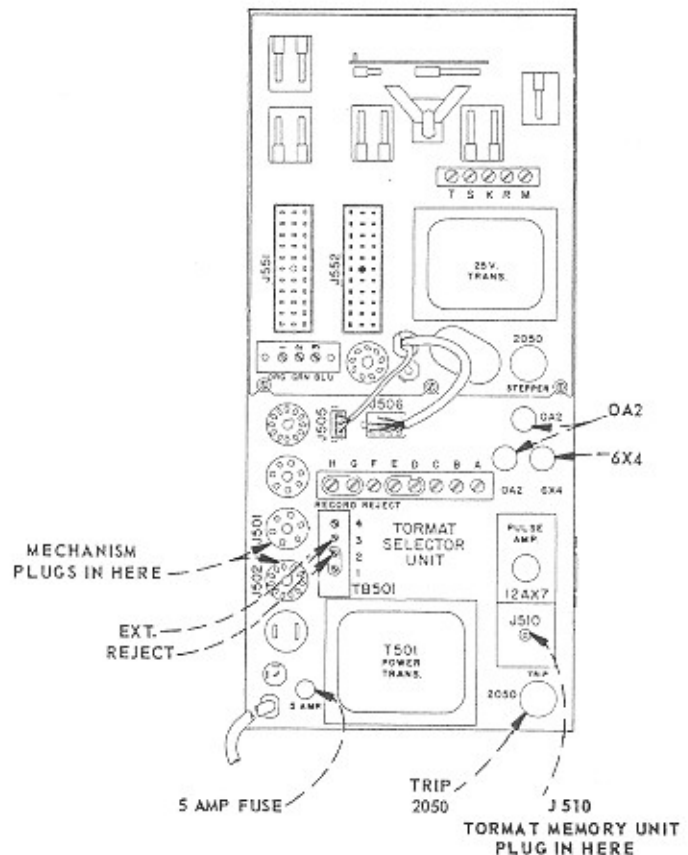
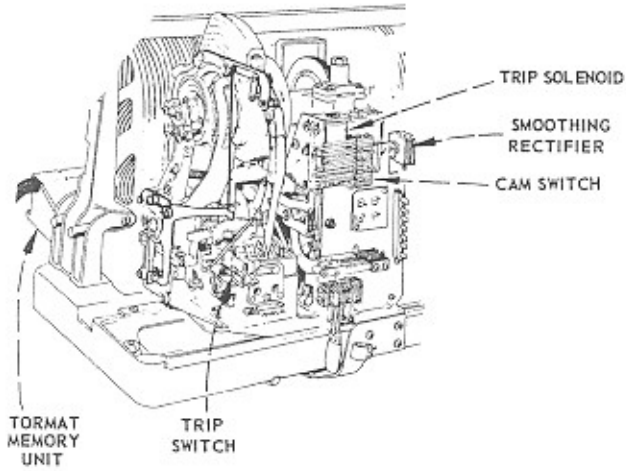
SELECT-O-MATIC DS100 and DS160 MODELS

READ-OUT CIRCUIT



SELECT-O-MATIC DS100 and DS160 MODELS

TRIP & SENSING CIRCUITS



SELECT-O-MATIC DS100 and DS160 MODELS

CREDIT SYSTEM

