

# SEEBURG

## POWERED REMOTE VOLUME CONTROL, TYPE PRVC2

The Powered Remote Volume Control, Type PRVC2, is an accessory which may be used with the Seeburg Select-O-Matic phonograph to remotely control the volume and to cancel selections. It consists of a volume control drive motor and control box which are interconnected by means of a five-wire cable (not included). Any reasonable length of cable may be used without introducing losses or having any effect on the sound. 100 to 150 foot cable length is practical. The cable, Part No. 508712, is available from your Seeburg Distributor in any length required.

*NOTE: Existing remote volume control cable installations may be used by removing the plug and the remote volume control unit.*

*CAUTION: Do NOT use shields as conductors.*

A slip clutch drive permits volume adjustment at the phonograph independently of the remote volume control.

### INSTALLATION INSTRUCTIONS

1. Determine location for the Remote Volume Control and best routing for the cable, keeping in mind appearance and possibility of physical damage to the cable as well as convenience of control.
2. Remove and discard fibre volume control cover. Do not discard the retaining screws.
3. Insert the Drive Shaft Assembly into the Volume Control until it bottoms.
4. Align the drive pin of the Drive Shaft with the slot in the Drive Motor Coupling and install the Drive Motor and Bracket Assembly as shown in Figure 1.

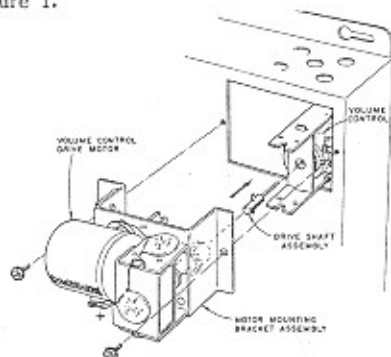


Figure 1. Drive Motor & Bracket Installation.

5. Secure in place with screws removed in step 2.
6. Strip and trim the phonograph end of the 5-wire cable as shown in Figure 4. Connect cable to drive motor and terminal strip on the Tormat Selector Unit as shown in Figure 3.

*NOTE: If it is desirable to deactivate the phonograph cancel button, open the jumper between terminal 1 and 2 of TB501.*

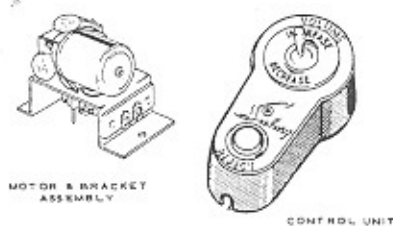


Figure 2.

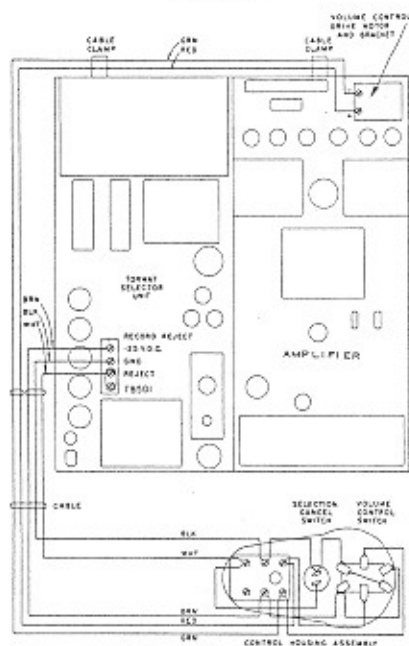


Figure 3. Wiring Diagram.

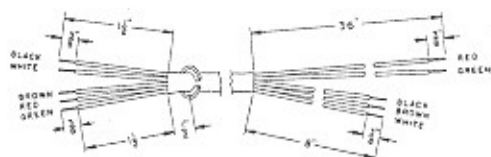


Figure 4. Cable Preparation.

7. Arrange the cable so it feeds through the cable clamps and passes through the hole in the rear left cabinet vertical riser.
8. Fasten the cable to the wall of the cabinet with one of the clamps, allowing enough slack cable in the cabinet to avoid strain on the cable or connections.
9. Lay the cable from the cabinet to the Remote Volume Control, passing the cable loosely over pipes and through necessary holes in walls and floors.
10. Lift out the Terminal Panel and connect the 5-wire cable to the screw terminals, Figure 3 and 7. Exercise caution so as not to crack panel.
11. Place Terminal Panel in position and apply strain relief clamp to cable.

12. Insert Terminal Panel Insulator, as shown in Figure 5. If the control box is to be permanently attached, fasten the bottom plate to a shelf or counter with No. 6 Hex Head Screws. Screw the control box to the plate with the 6-32 x 1-3/16 screw provided.

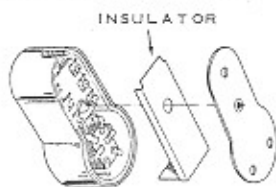


Figure 5. Terminal Panel Insulator.

If portable usage is desired, press the three rubber feet supplied into the holes in the bottom plate.

13. Fasten the cable securely, starting at the control with a clamp adjacent to the control box. Take up excess cable as it is fastened.
14. When the cable is installed, leave enough slack to permit moving the phonograph from the wall for maintenance and cleaning.

#### REMOVAL OF DRIVE MOTOR

When the volume control drive motor and drive shaft are to be removed, it is essential that the ball retainer plate on the volume control be pressed down before extracting the Drive Shaft.

**CAUTION:** Failure to do this may damage the volume control.

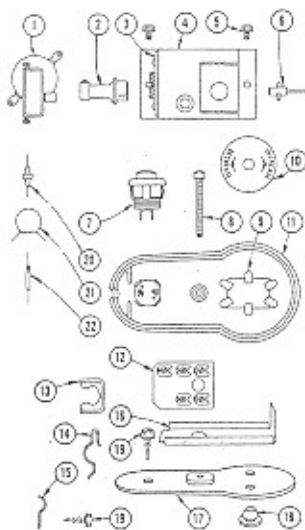


Figure 8.

\*SOME POWERED REMOTE VOLUME CONTROLS, TYPE PRVC2, USE A ROTARY TYPE SWITCH. THE MOUNTING HOLE IN THE CONTROL HOUSING FOR THE ROTARY SWITCH IS 3/8 INCH IN DIAMETER. THE HOLE FOR THE TOGGLE TYPE SWITCH IS 15/32 INCH IN DIAMETER. OTHER PARTS ARE AS LISTED AT THE RIGHT.

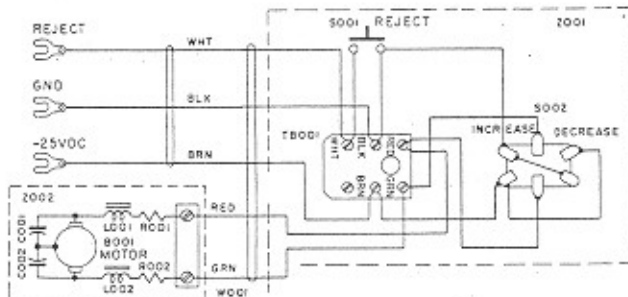
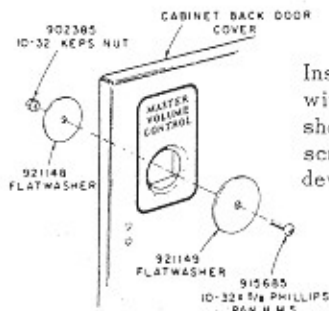


Figure 6. Schematic Diagram.

#### MASTER VOLUME CONTROL CLOSURE



Install washers and secure with screw and nut as shown in Figure 7. Tighten screw so that washers develop a slight dish.

Figure 7. Volume Control Closure.

#### PARTS LIST FOR THE POWERED REMOTE VOLUME CONTROL, TYPE PRVC2

Item	Part No.	Description
1	505906	Volume Control Drive Motor & Bkt. Assen.
2	505914	Coupling
	918301	6-32 x 1/8 Socket H. Cup Pt. Set Screw
3	505913	Terminal Panel
4	505909	Motor Mng. Bracket Assembly
	986161	Grammer
5	960698	6-32 x 1/8 Hex Washer H. Self Top Screw
6	505916	Drive Shaft Assembly
7	505885	Selection Cancel Button
8	913675	6-32 x 1-3/16 Phillips Fil. H.M.S.
9	508897	Switch
	508898	Keyed Washer (CH29-761)
	905004	15/32 - 32 Hex Nut
10	508899	Switch Plate
11	508896	Control Housing
12	508901	Terminal Panel
13	508182	Strain Relief
14	409974	Cable Clamp
15	402098	Cable Clamp
16	508904	Terminal Panel Insulator
17	503882	Bottom Plate Welded Assembly
18	503183	Rubber Foot
19	971170	No. 8 x 5/8 Phillips R.H.M.S.
20	508923	Choke
21	86287	Condenser
22	02407	Resistor

Description	Toggle Switch	Rotary Switch
Switch	508897	508704
Lockwasher	(none)	925712
Keyed Washer	508898	(none)
Hex Nut	905004 (15/32")	904801 (3/8-32)
Knob	(none)	305315
Switch Plate	508899	(none)
Control Housing	508896	508705