

SYMPHONOLA MODEL 148

148M, 148ML, 148S & 148SL

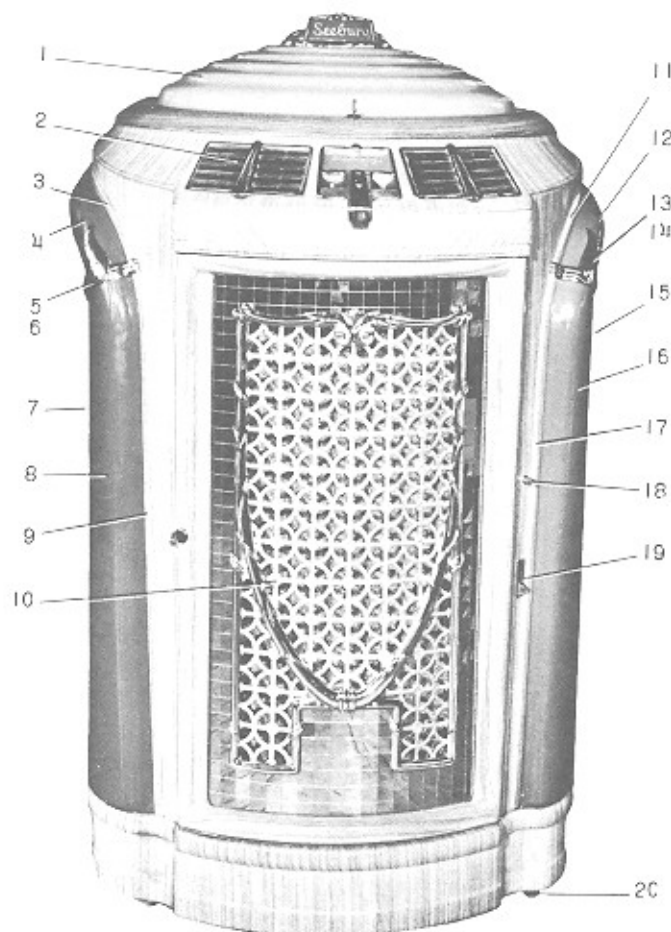


FIG. 1

PARTS LIST

Item	Part No.	Description	Item	Part No.	Description
1	See Page 1051	all parts identical except F403230 Cabinet Lid Frame, Light	11	F403232	Pilaster Trim, Upper, R.H.
2	400410	ES3-L6 Electric Selector Assembly (same as ES2-L6 except for finish see page 3019)	12	F403764	Upper Plastic, R.H.
3	F403233	Pilaster Trim, Upper, L.H.	13	F403017	Retaining Bracket, Outer, R.H.
4	F403765	Upper Plastic, L.H.	14	F403768	Retaining Bracket, Inner
5	F403018	Retaining Bracket, Outer, L.H.	15	F403236	Pilaster Trim, Lower, Rear, R.H.
6	F403768	Retaining Bracket, Inner	16	F403766	Lower Plastic, R.H.
7	F403237	Pilaster Trim, Lower, Rear, L.H.	17	F403234	Pilaster Trim, Lower, Front, R.H.
8	F403767	Lower Plastic, L.H.	18	F402025	Slug Release Plunger Assembly
9	F403235	Pilaster Trim, Lower, Front, L.H.	19	F402018	Coin Return Cup, Outer
10	See Page 1047	all parts identical except			

SYMPHONOLA MODEL 148

148M, 148ML, 148S & 148SL

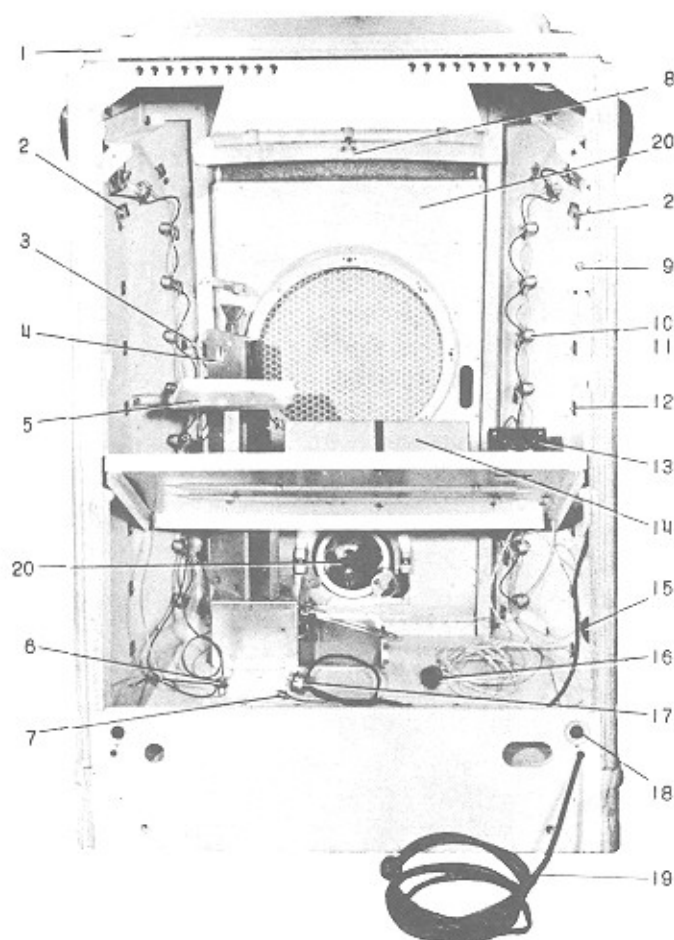


FIG. 2

PARTS LIST

Item	Part No.	Description	Item	Part No.	Description
1	F403230	Cabinet Lid Frame only	13	F402077	Lighting Transformer
2	F403768	Retaining Bracket, Inner, R.H.	12030		Fuse Block Assembly
3	F402025	Slug Release Plunger Assembly	F7826		Bullet Terminal
4		See Page 1030a	F7846		Fuse, 2½ amp. Type 3AG
5	F402015	Drip Pan	14	F402784	Record Support Disc
6	16042	2 Prong Plug	15	F402382	Outlet
7	F402066	2 Prong Plug, Small	16	F7407	4 Prong Plug
8	F402243	Coin Chute Clamp	17	F403122	7 Prong Plug, Large
9	F302007	Volume Control	18	F403076	Cup Washer
10	F7814	Lamp Socket		F403077	Fibre Bushing & Nut Assembly
11	F402180	81 Lamp, Frosted	19	F402780	Line Cord
12	70103	Speed Nut	20	See Page 1047,	all parts identical except
					F403231 Door Frame, Light

SYMPHONOLA MODEL 148

148M, 148ML, 148S & 148SL

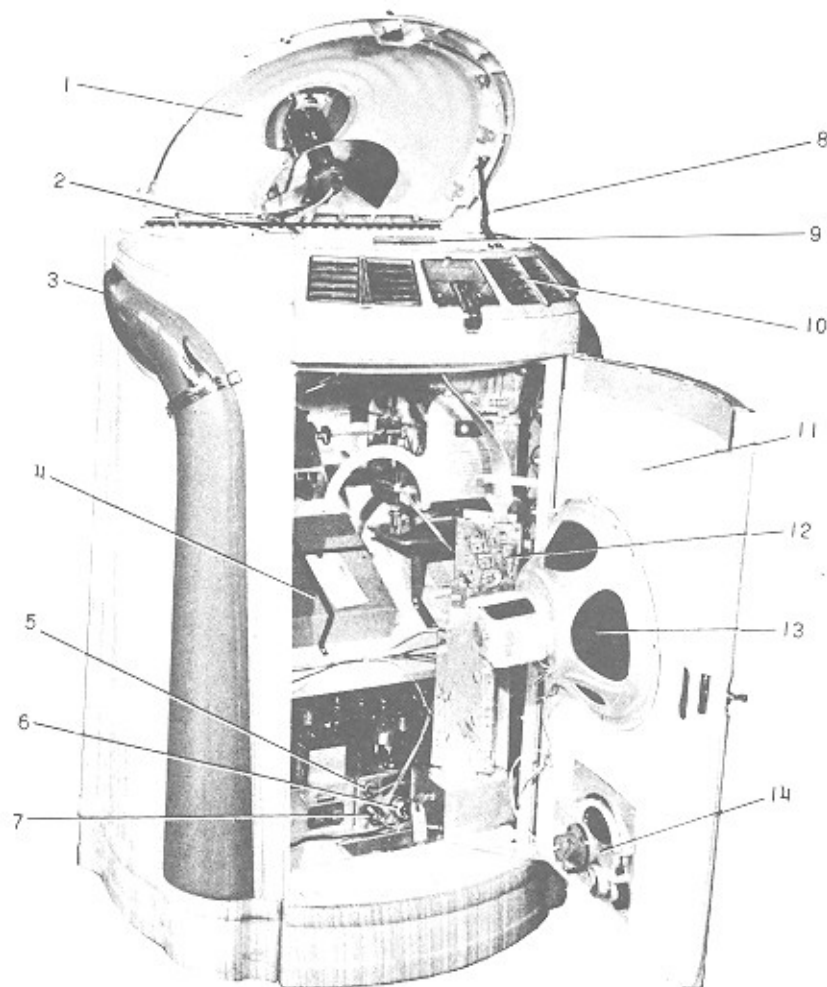


FIG. 3

PARTS LIST

Item	Part No.	Description	Item	Part No.	Description
1	See Page 1051,	all parts identical except F403230 Cabinet Lid Frame, Light	8	F402553	Lid Support Assembly
2	F402378	Record Cover Spring		F403117	Lid Support Spring
	F403128	Record Cover Spring Screw	9	F402393	Title Strip Spring
	70121	Tinnerman Nut		F403127	Title Strip Label
3	F403088	Cancel Switch	10	ES3-L6	See Page 3001, all parts identical except F400385 Frame, Light
	F403052	Cancel Pin	11	See Page 1047,	all parts identical except F403231 Door Frame, Light
	J22021	'C' Washer	12	See Page 1030a,	Coin Mechanism
	F403758	Cancel Switch Bracket	13	402031	Speaker
	71461	6-32 x 3/8 R.H. Machine Screw (2)			402421 Cone & V.C. Assembly
	71636	5-40 x 3/4 Fil.H. Machine Screw (2)			402431 Field Coil
	F200028	Switch Lock Plate		402032	Speaker
4	F402784	Record Support Disc (20)			402422 Cone & V.C. Assembly
5	F402430	6 Prong Plug, Speaker			402432 Field Coil
6	F403122	7 Prong Plug, Large	14	See Page 1047,	all parts identical
7	200241	5 Prong Plug, Pickup			

INSTRUCTIONS FOR PREPARING SEEBURG SYMPHONOLAS FOR OPERATION

1. Examine instrument immediately upon unboxing. If any damage is found, notify transportation representative and have proper notation made on transportation bill with his signature attached.
2. Make certain that the voltage and frequency on the meter box at the location agree with the markings of voltage and frequency on the instrument name plate.
3. Remove parts packed in the coin box.
4. Follow instructions on the tags found in various places in instrument and remove the blocks and shipping braces accordingly. Particular attention should be given to brace holding record trays.
5. A set of record support discs is fastened to heat baffle of instrument. One should be placed in each tray beneath each record making certain that disc and record rest properly in their respective trays.
6. The correct procedure in loading records is to drop a 5c coin, select #20 selection and cancel same with cancel pin on left side of instrument. This leaves number twenty tray over turntable. This tray is first to be loaded with a support disc and record after which the rest of the trays should be filled starting with number one down through nineteen sliding each tray to the right until all are loaded. After loading the nineteen trays be sure to return them all by hand to their original position.
7. Instrument is shipped with the tubes installed. In shipment they may loosen. For this reason it is well to see that they are all firmly in their sockets before starting instrument.
8. Check spirit level on slug rejector mechanism. If adjustment is needed, loosen three thumb screws (see illustration on sticker near slug rejector) and rotate slug rejector on its axis to exactly center the bubble in spirit level. Retighten locking screws.

CAUTION: Never loosen nuts holding slug rejector mounting board. This part has been correctly installed at the factory and any change in its position will result in unsatisfactory operation of the slug rejector.

9. Test the instrument by inserting several coins in order to make sure it is functioning properly.

PREPARING INSTRUMENT FOR MOVING

1. Insert a 5c coin in coin slot and select #20 record, cancel and allow instrument to come to rest.
2. Remove all records and record support discs.
3. Tie tone arm to arm rest post.
4. Replace the four wing nuts on the top shelf of record changer and turn all the way down.
5. Install the wood brace which holds all the trays in place.

TO SHIP

If instrument is to be shipped by way of a transportation company, it should be crated and blocked in the same manner in which it was when received from the factory.

J. P. SEEBURG CORPORATION, 1510 DAYTON ST., CHICAGO 22, U. S. A.

PART NO. F-402173

SYMPHONOLA MODEL 148M & 148ML

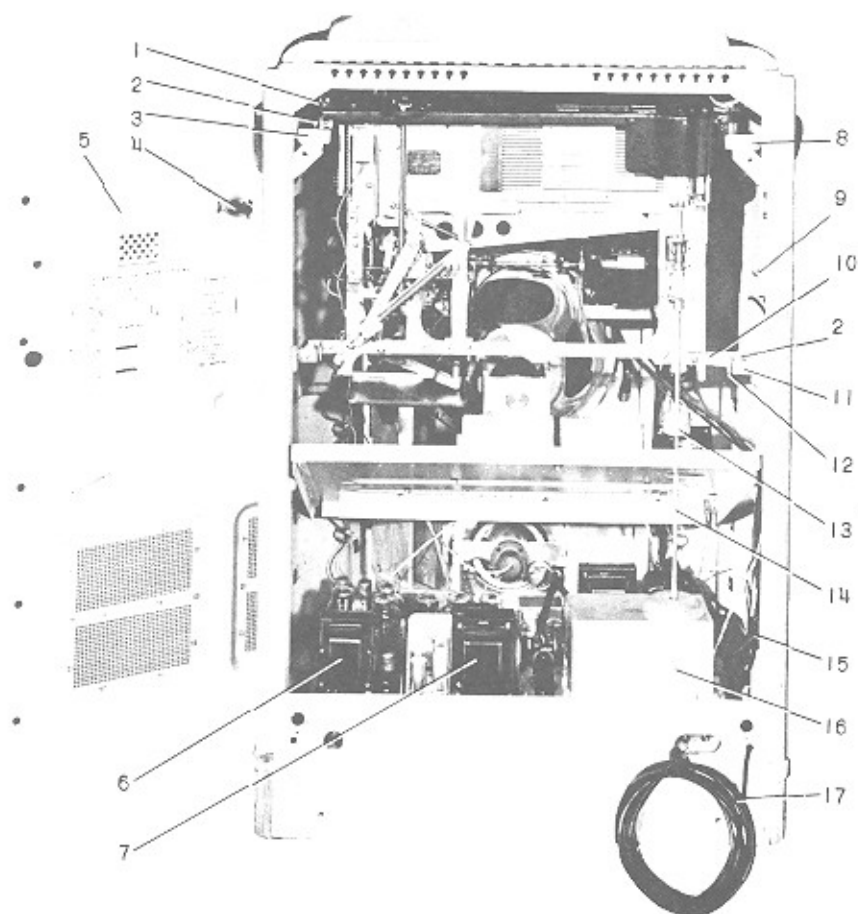


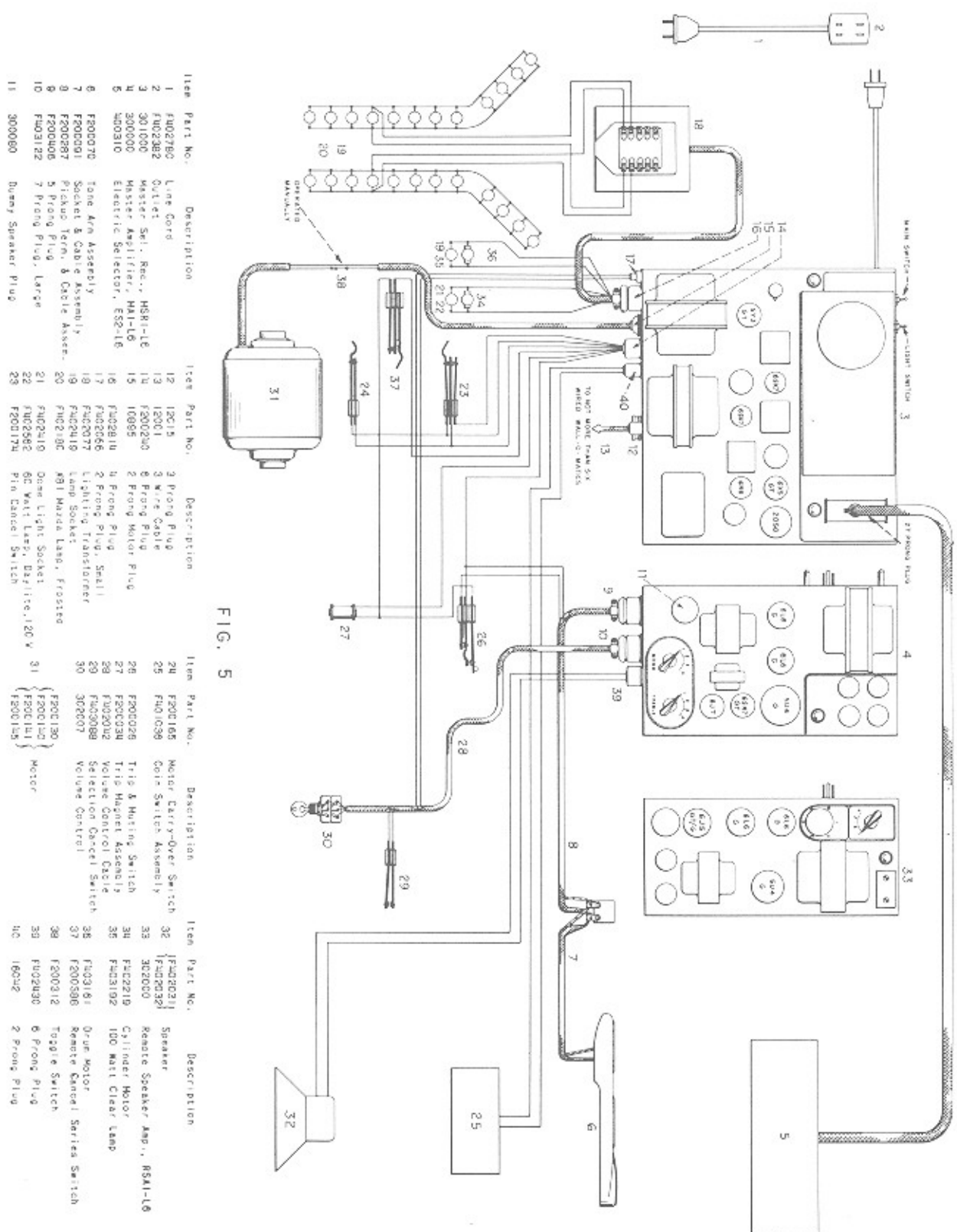
FIG. 4

PARTS LIST

Item	Part No.	Description	Item	Part No.	Description
1	70079	Wing Nut	9	F302007	Volume Control
	71585	10-32 x 2 1/4 R.H. Machine Screw		13611	Key
2	F1284	Chassis Stabilizing Spring		F302070	Acorn Nut
	F1285	Spring Lock Plate	10	F402012	Stabilizer Support Strip
	71584	10-32 x 1/4 R.H. Machine Screw	11	F403054	Stabilizing Bracket
3	F200233	R.H. Mounting Block Assembly	12	F403055	Shipping Bracket
4	F403120	Lock Assembly (Rear Door)	13	F402293	Weight
5	F403737	Rear Door Complete	14	F402063	Coupling Shaft
6	RSAL-L6	Remote Speaker Amplifier, See Section 4000	15	F402382	Outlet
7	MA1-L6	Master Amplifier, See Section 4000	16	MSR1-L6	Master Selection Receiver, See Section 5000
8	F200232	L.H. Mounting Block Assembly	17	F1360	Line Cord

DESCRIPTION

Weight.....	325	Pounds
Weight, Crated.....	415	Pounds
Height.....	57	Inches
Width.....	36	Inches
Depth.....	26 1/2	Inches
Power Output.....	18 Watts + 18 Watts	



CABINET WIRING DIAGRAM - SYMPHONOLA MODEL 148M & 148ML

SCHEMATIC DIAGRAM - GENERAL POWER CIRCUIT, MODEL 148M & 148ML

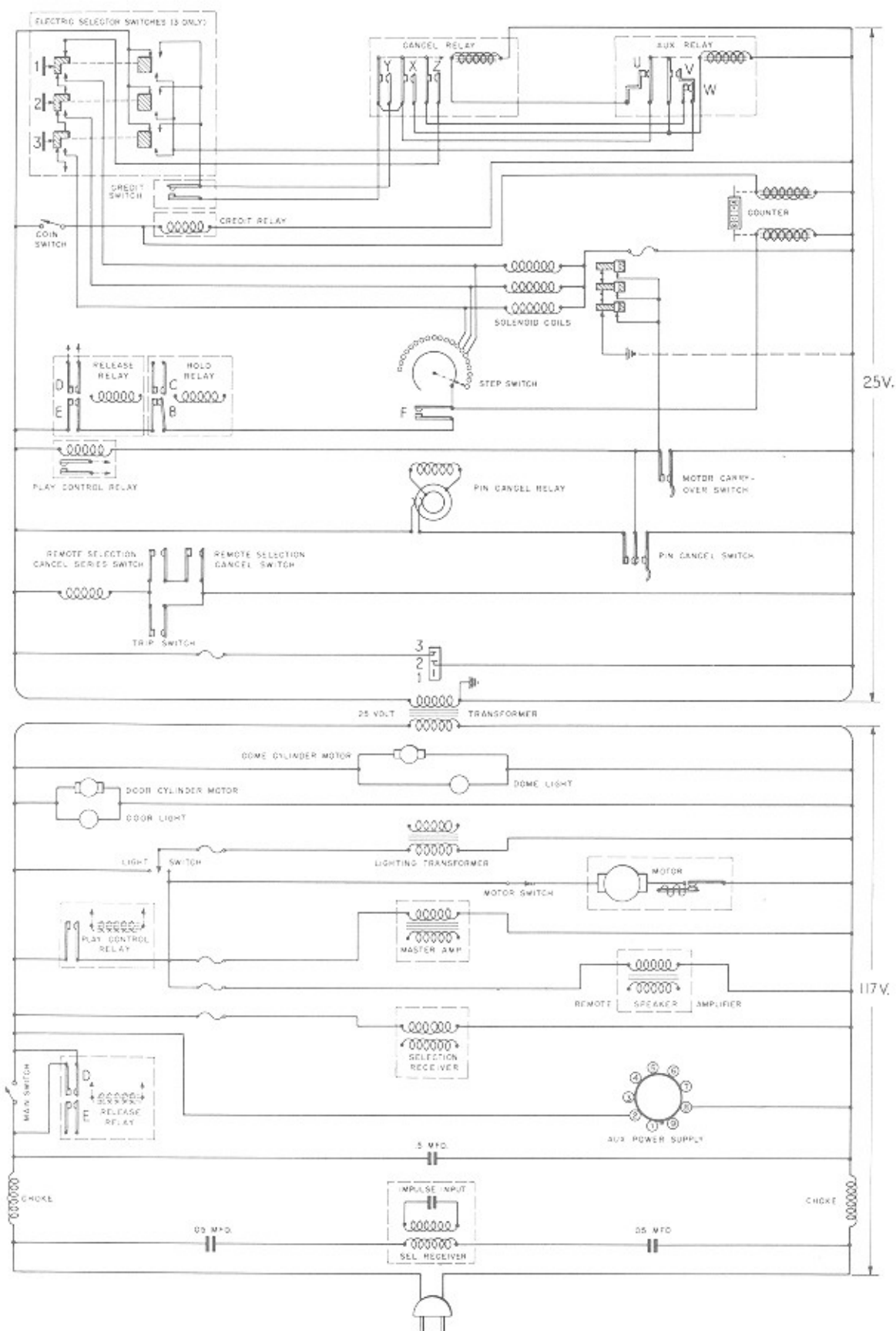


FIG. 6

SYMPHONOLA MODEL 148S & 148SL

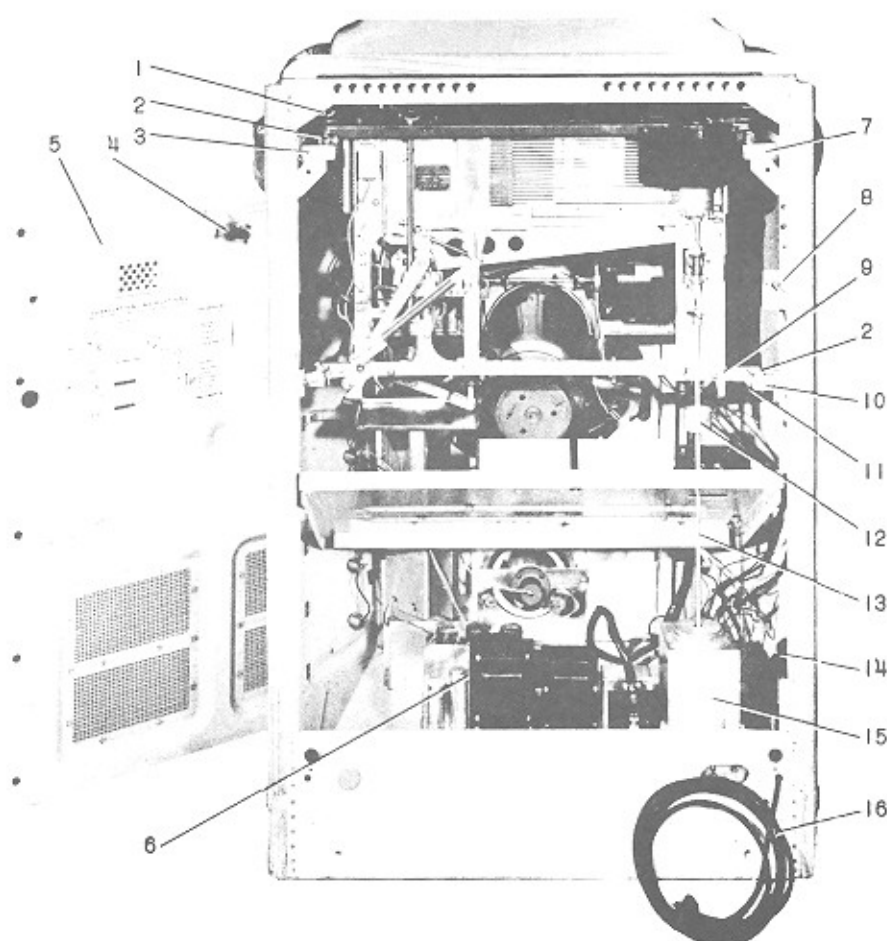


FIG. 7
PARTS LIST

Item	Part No.	Description	Item	Part No.	Description
1	70079	Wing Nut	8	F302007	Volume Control
	71585	10-32 x 2 1/4 R.H. Machine Screw		13611	Key
2	F1284	Chassis Stabilizing Spring		F302070	Acorn Nut
	F1285	Spring Lock Plate	9	F402012	Stabilizer Support Strip
	71584	10-32 x 1/4 R.H. Machine Screw	10	F403054	Stabilizing Bracket
3	F200233	R.H. Mounting Block Assembly	11	F403055	Shipping Bracket
4	F403120	Lock Assembly (Rear Door)	12	F402293	Weight
5	F403737	Rear Door Complete	13	F402063	Coupling Shaft
6	MA1-L6	Master Amplifier, See Section 4000	14	F402382	Outlet
7	F200232	L.H. Mounting Block Assembly	15	SDU1-L6	Solenoid Drum Unit, See Section 6000
			16	F1360	Line Cord

DESCRIPTION

Weight.....	297	Pounds
Weight, Crated.....	402	Pounds
Height.....	57	Inches
Width.....	36	Inches
Depth.....	26 1/4	Inches
Power Output.....	18	Watts

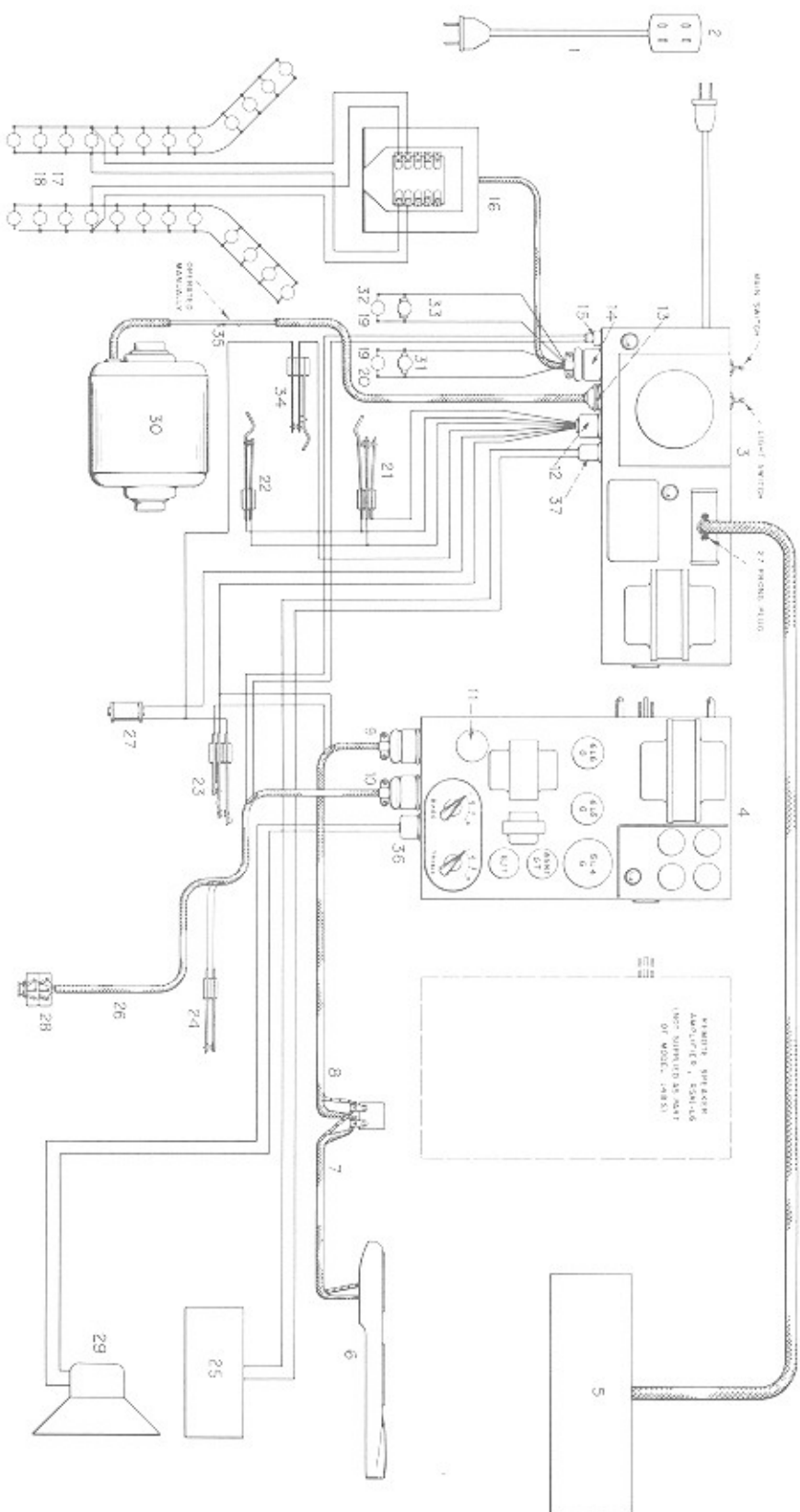


FIG. 8

Item	Part No.	Description	Item	Part No.	Description	Item	Part No.	Description	Item	Part No.	Description
1	F402780	Line Cord	11	300060	Quarry Speaker Plug	21	F200170	Pin Cancel Switch	33	F403161	Drive Motor
2	F402382	Outlet	12	F200240	6 Prong Plug	22	F200165	Motor Carry-Over Switch	34	F200388	Remote Cancel Series Switch
3	3000000	Solenoid Drum Unit, SDU-16	13	10895	2 Prong Plug	23	F200026	Trip & Warning Switch	35	F200312	Toggle Switch
4	3000000	Master Amplifier, MAI-16	14	F402814	2 Prong Plug	24	F403088	Selection Cancel Switch	36	F402430	6 Prong Plug
5	400310	Electric Selector, ES2-16	15	F402086	2 Prong Plug, Small	25	F401036	Coin Switch Assembly	37	16032	2 Prong Plug
6	F200070	Tone Arm Assembly	16	F402077	Lighting Transformer	26	F402042	Volume Control Cable			
7	F200061	Socket & Cable Assembly	17	F7810	Lamp Socket	27	F200034	Trip Magnet Assembly			
8	F200287	Prong Term. & Cable Assen.	18	F402160	#81 Hazard Lamp, Frosted	28	302007	Volume Control			
9	F200406	5 Prong Plug	19	F402018	Light Socket	29	F4020311	Speaker			
10	F403122	7 Prong Plug, Large	20	F402582	60 Watt Lamp, Daylight, 120 V		F4020382	Speaker			

SCHEMATIC DIAGRAM - GENERAL POWER CIRCUIT, MODEL 148S & 148SL

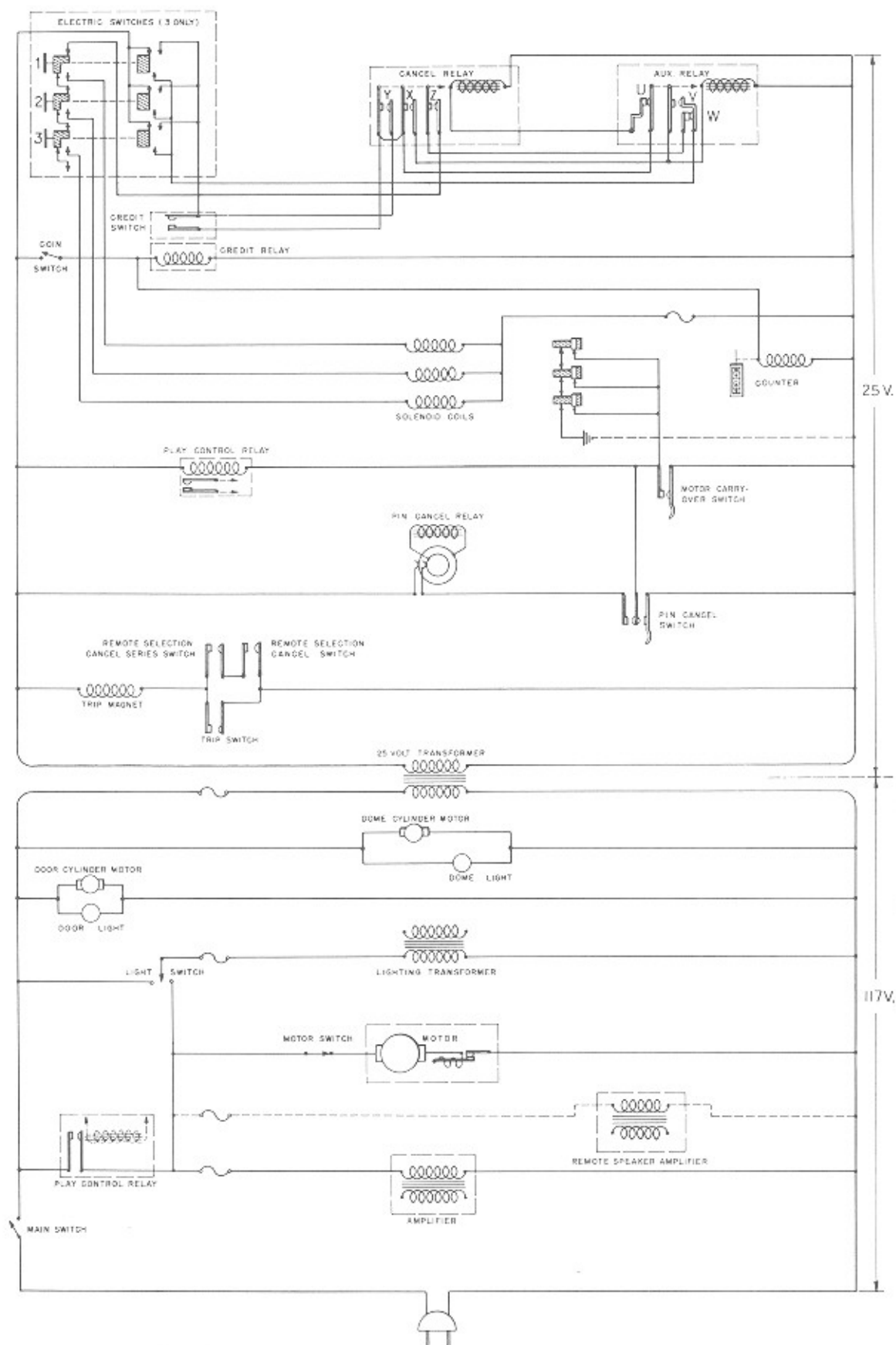


FIG. 9

SYMPHONOLA MODEL HI48M

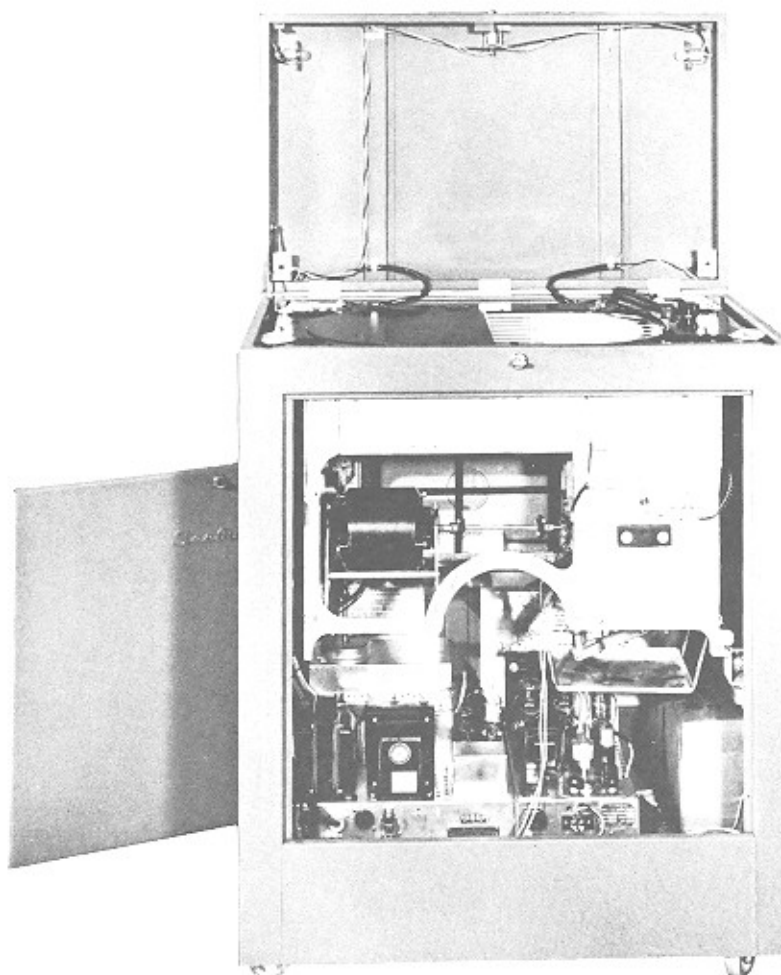


FIG. 10

Parts List.....	Pages 1042, 1043 & 1045
Cabinet Wiring Diagram.....	Page 1045
General Power Circuit.....	Page 1046
Installation Instructions.....	Page 1044

DESCRIPTION

Weight.....	251	Pounds
Weight, Crated.....	330	Pounds
Height.....	36½	Inches
Width.....	31¼	Inches
Depth.....	18½	Inches
Audio Power Output.....	18	Watts
Audio Power Output with Remote Speaker Amplifier added.....	36	Watts