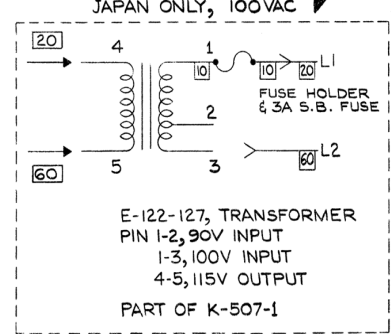
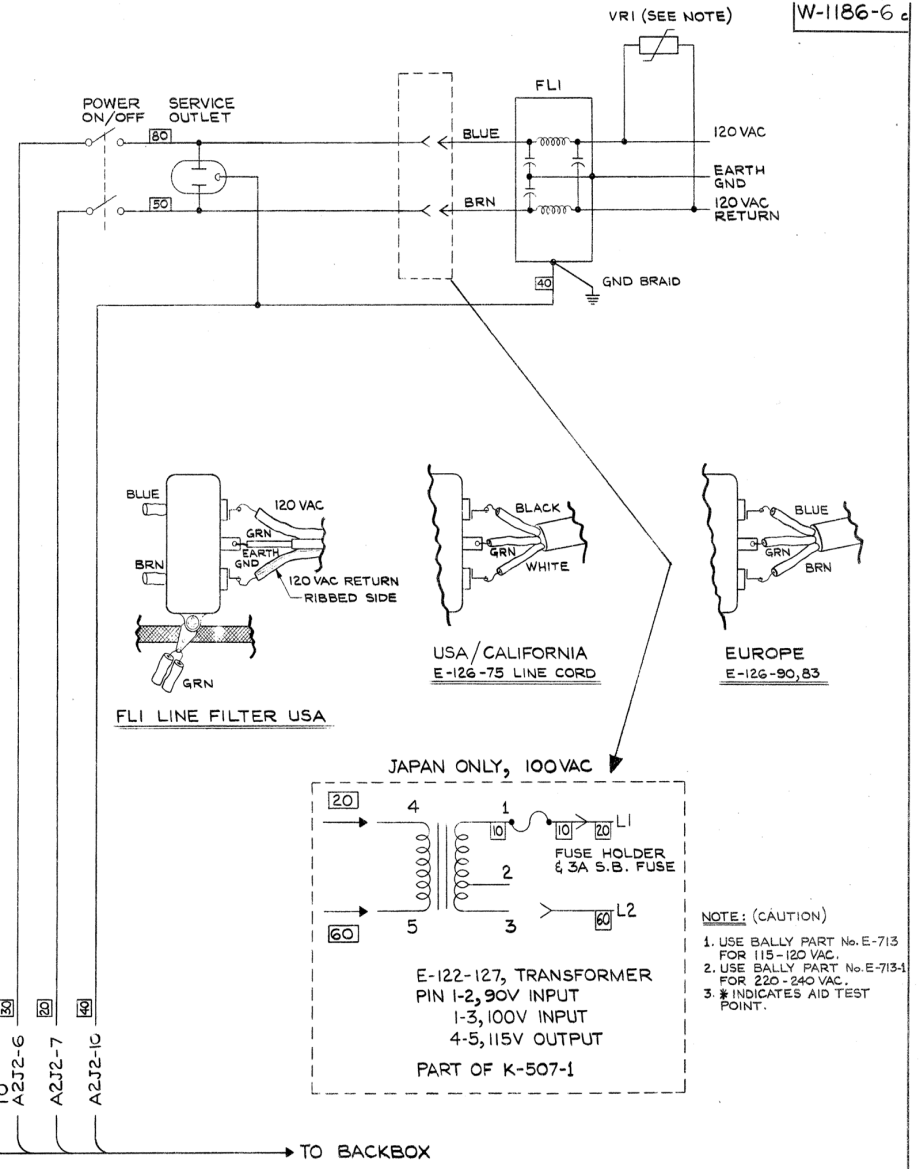


J1

TO	J1 PIN	TO	J1 PIN
A4J3-9	1	A4J3-3	11
A4J3-10	2	A2J2-2	15
A4J3-11	3	A3J2-8	16
A4J3-12	4	A2J2-1	17
A4J3-13	5	A2J2-5	18
A4J3-14	6	A4J3-1	19
A4J3-15	7	A3J2-7	20
A4J3-16	8		
A4J3-2	10		

DOOR PLUG

A7 CABINET ASS'Y. WIRING  
NOTE: -DIODES ARE IN4004, (E-587-6)



- NOTE: (CAUTION)
1. USE BALLY PART No. E-713 FOR 115-120 VAC.
  2. USE BALLY PART No. E-713-1 FOR 220-240 VAC.
  3. \* INDICATES AID TEST POINT.

SER.	DESCRIPTION	TOOL No.

REMOVE ALL BURRS		DR. BY DATE E.V. 3-28-79		Bally MANUFACTURING CORP. 2840 BELMONT AVENUE CHICAGO, ILLINOIS 60618	
TOLERANCES ON DIMENSIONS UNLESS OTHERWISE SPECIFIED		CK. BY DATE		1161-E	
FRACTIONS 1/16, 1/8, 1/4, 1/2, 3/4, 1, 2, 3, 4, 5, 6, 8, 10, 12, 16, 20, 24, 32, 40, 48, 60, 72, 96, 120, 144, 180, 240, 360, 480, 720, 960, 1440, 2880		AP'D BY DATE E.V. 4-5-79		ASSEMBLY NO.	
DECIMALS 1/10, 1/100, 1/1000		FINISH		WIRING DIAGRAM ELECTRONIC	
ANGLES 1		MATERIAL		PART No. W-1186-6 c	
DO NOT SCALE DRAWING		LET. CHANGE DATE BY CK.		SCAN LINE, INC. CHICAGO	