

ELECTRONICTM

Servicing & Technology

JANUARY 1984/\$2.25

Negative feedback

Troubleshooting VCR servos

Telephones-
Changes on the horizon



The
Professionals
Choice

PTS

All makes/ All models



Thousands of professional television servicemen have turned to PTS for quality rebuilt tuners and modules. The reason is simple.

- One stop shopping for all makes/all models.
- Automatic updates for "better than brand new" tuners and modules.
- Over 1500 authorized stocking distributors — one near you.
- Fast 8 hour rebuilding service.
- One year limited warranty.
- Quality rebuilds that meet or exceed original manufacturer's specifications.

Send for your free Price and Technical Information Guide today!



PTS Corporation

The world's largest independent electronics rebuilder.

P.O. Box 272
Bloomington, IN 47402
(812) 824-9331

Circle (1) on Reply Card

MCM's SPECIALS!

"SERVICE IS OUR SPECIALTY"

We serve you better than the rest by having:

2 experienced full-time service techs whose **SOLE** jobs are to answer your questions and help solve your problems.

"One stop shopping"—Our 108 pg. catalog has over 4,000 items. One call does it all!

Satisfaction guaranteed—if for some reason you're not completely satisfied with the parts you receive from MCM, simply call our friendly helpful Customer Service dept., who will answer any questions you may have.

Best of all, you get all this great service **PLUS** some of the lowest prices in the industry!



**DAIWA
30 AMP
SUPPLY**

\$199⁹⁵
#72-030

■ This heavy duty power supply is by far the best we've used yet!!!! ■ We've tried everything to blow this one up ■ Its fast acting, auto resetting protection circuit stops even the fastest shorts from hurting its circuitry

SPECIFICATIONS

■ **Output Voltage:** DC 9-15V variable ■ **Output Current:** 30A 1 minute on 3 minutes off 22A continuous ■ **Voltage Fluctuation:** Less than .5% at rated output ■ **Ripple Voltage:** Less than 1mV at rated output ■ **Power Consumption:** 600 watt at 30 amps ■ **Dimensions:** 9 3/8" (W) x 7 5/8" (H) x 10 1/2" (D) ■ **Weight:** Approximately 22 lbs. ■ 2 year warranty



**TENMA
6.5 MHz
OSCILLO-
SCOPE**
\$169⁹⁵
#72-300

SPECIFICATIONS: Vertical Deflection: Sensitivity—10mV Div, Attenuator—1, 10, 100, and GND, Bandwidth—(-3dB)—DC to 6.5MHz, AC: 2Hz to 6.5MHz, Input Impedance—1MΩ ± 5% within 35PF, Max Input Voltage—600Vp-p or 300V (DC + AC peak), **Horizontal Deflection:** Sensitivity—250mV Div, or better, Bandwidth—DC-500KHz (-3dB), Input Impedance—1MΩ ± 10% within 35PF, **Time Base:** Sweep Frequency—10Hz—100KHz in 4 ranges and fine control, Linearity—Less than 5%, **Synchronizing:** Internal and external, **Synchronization:** INT, EXT—INT: more than 1 Div on the screen, EXT: more than 2Vp-p, **C.R.T.:** 2 1/2" Screen, **Blanking:** G1, **Power Source:** AC115 230V ± 10% 50 60Hz, **Accessories:** Test lead instruction manual, **Dimensions:** 220(W) x 160(H) x 305(D) mm, **Weight:** 8.5 lbs. The Tenma Model 72-300 is designed to meet a broad range of applications in designs, testing and servicing. Excellent stability with high linearity sweep. Has BNC type connectors and specifications, not commonly found on scopes in this price range. Use Tenma, the new name in precision test equipment.



**3 1/2 DIGIT LCD MULTI-
METER WITH hFE TESTER!**

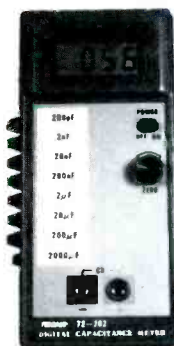
■ 0.5" LCD display ■ DC input impedance 10M Ω ■ DC 100μV, 100mA, 0.1 ohm resolution ■ DCA up to 10A ■ Auto polarity ■ Diode & hFE transistor tests ■ Low battery indicator ■ Overload protection

SPECIFICATIONS

■ **Ranges:** DCV—200mV, 2, 20, 200, 1000V, ACV—200, 1000V, DC Current—200μA, 2m, 20m, 200m, 10A, Resistance—2K, 20K, 200K, 2M ohm ■ **Accuracy:** DCV—± 0.5% (200mV), ± 0.8% (2V up) of full scale, ACV & DC Current—± 1.2% of full scale ■ **Resistance:** ± 1% ■ **Size:** 7" x 3 1/4" x 1 1/2" ■ **Weight:** 16 oz. ■ Backed by MCM 1 year warranty ■ **Power Requirements:** One nine volt battery (not supplied)

#72-050

\$39⁸⁰



DIGITAL CAPACITANCE METER

■ Measurement ranges 0.1pF to 1999μF ■ Accuracy 0.5% typical ■ 3 1/2 digit 0.5" LCD display ■ Immediate direct reading ■ Fuse protected against accidental high voltage connection ■ 200 hour battery life

SPECIFICATIONS

■ **Ranges:** 8 ranges with full scale values from 200pF to 2000μF ■ **Accuracy:** ± 0.5% of full scale ± 1 digit to 200μF range; ± 1% of full scale ± 1 digit on 2000μF range ■ **Resolution:** 0.1pF ■ **Sampling Time:** 0.5 sec. ■ **Out-of-Range Indication:** Indication of "1" ■ **Time Base:** Crystal O.S.C. ■ **Size:** 7 1/8" x 3 1/8" x 1 1/2" ■ **Weight:** 10 oz. ■ Backed by MCM 1 year warranty ■ **Power Requirements:** One nine volt battery (not supplied)

\$59⁸⁰

#72-040

**EXTRA
SPECIAL**



**VARIABLE AUTO
TRANSFORMER**

■ Gives you the ability to bring up line voltage slowly to monitor problems in a TV, stereo or other electronic equipment ■ Has built-in amp meter which shows excessive current to check for shorts before they can cause costly component failure ■ This unit will easily pay for itself within months ■ Input 120V, 60Hz ■ Output 0-130V ■ Current 10A, 1.3KVA ■ Plug outlets on side

#72-110

\$79⁹⁵

SOLDERING IRON



■ Molded plastic handle with finger-ease grip ■ Screw-in nickel-plated copper tip ■ Long life ■ 25 watts ■ Tips avail.

#21-160 \$7⁸⁰ (1-4)

\$7⁴⁰ (5-up)

DIGITAL LOGIC PROBE



■ Extremely compact and lightweight ■ Instantly recognizes high, low or intermediate levels, open circuit, pulsing modes ■ Multi-family compatibility—DTL/TTL/HTL/CMOS IC ■ Detects pulses as short as 50 nanoseconds ■ Overvoltage and reverse voltage protection ■ Memory ■ Tenma Brand

#72-190
\$19⁹⁵

SOLDER WICK



■ Tenma brand braided solder remover ■ 5 ft. ■ .100" blue label

74¢ ea.
(Min. 10 pcs.)
#21-327

TENMA MICROWAVE LEAK DETECTOR



Microwave leakage can be a serious health hazard! With the Tenma microwave leak detector you can tell at a glance if your microwave oven exceeds recommended leakage levels. Bad door gaskets or latches that cause leakage can be detected instantly. Very accurate, compact and easy to use.

#72-220

INTRODUCTORY SPECIAL! \$6⁹⁵

TENMA AUTO-TEMP. SOLDERING STATION



■ Provides high production soldering capacity with the overheat protection of closed-loop temperature control ■ Temperature can be adjusted from 100° to 500° C (210-930° F) as you desire, with a tolerance of less than 5% ■ Two LED indicators for main and heater power ■ Built-in cleaning sponge and temperature meter ■ UL Approved

\$48⁹⁵

#21-145

**FOR THE ONLY ELECTRONIC PARTS
COMPANY YOU'LL EVER NEED, CALL:**

TOLL FREE 1-800-543-4330 (In Ohio 1-800-762-4315)

**mcm
ELECTRONICS**

858 E. CONGRESS PARK DR.
CENTERVILLE, OH 45459

The how-to magazine of electronics...

ELECTRONIC

Servicing & Technology

January 1984
Volume 4, No. 1



Electronic telephones with new features such as automatic redial, memory dialing, push-button convenience and cordless operation make conventional phones seem old-fashioned. See related story on page 22. (Photo courtesy of General Electric)

8 Test your electronic knowledge

By Sam Wilson, ISCET test director

See how you would do on the Certified Electronic Technicians' test. This month's questions cover general subjects.

12 How to troubleshoot VCR servos

By Robert L. Goodman

This article analyzes servo problems in VCRs and includes servo circuits in the VHS and Betamax systems.

22 Telephones—Changes on the horizon

By Mannie Horowitz

This article looks at some of the new features and the specifics of operation of cordless telephones.

40 Positive thinking about negative feedback

By Bernard Daien

Negative feedback is an essential part of audio high fidelity amplifiers, instrumentation amplifiers, control systems and automation. This article explains what happens regarding inverse feedback and dispels some misconceptions.

48 Using linear ICs—Part 2

By Joseph J. Carr, CET

Differential amplifiers and ac coupling are explained in this article.

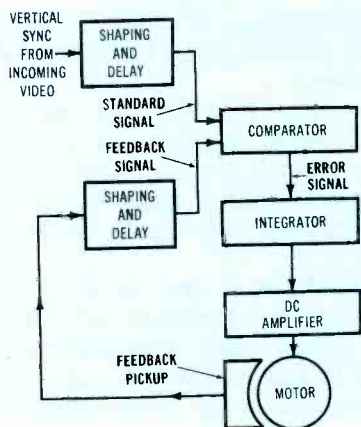
52 More about π in electronics equations

By Sam Wilson, ISCET test director

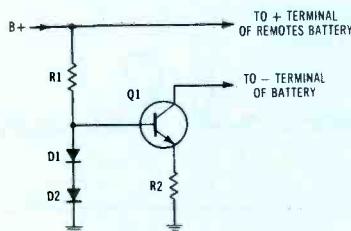
This article discusses why π occurs in so many electronics equations.

Departments

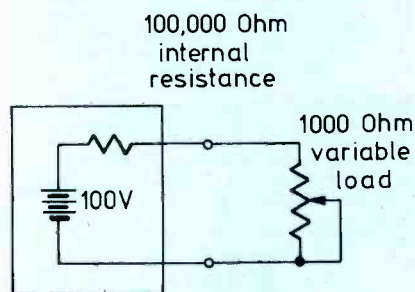
- 6 News
- 6 Feedback
- 29 Profax
- 37 Photofact
- 38 Troubleshooting Tips
- 50 Readers' Exchange
- 57 Literature
- 60 Products



Page 12



Page 22



Page 40

Next month...

Some of the most misunderstood and least appreciated of the tools available to assist electronics technicians are electronic chemicals. This article describes some essential electronic chemicals that are available to technicians who service home electronic equipment. It outlines the various solutions chemicals offer to both simple and complex engineering problems of modern electronic equipment.

Farewell, Ma Bell

Faster than a speeding bullet, more powerful than a locomotive, able to leap tall buildings in a single bound. Superman, of course. When the call came that he was needed, Superman stepped into a telephone booth, doffed the horn-rim glasses and clothing of Clark Kent, the mild-mannered reporter for the Metropolis Daily Planet, and flew off to defend, "...truth, justice and the American way."

Perhaps the reason we seldom see Superman any more is that he has no place to change. The old, solid wood phone booths gave way to glass and ultimately to the small exposed stations we have now.

But the change in booth construction is only a superficial manifestation of the profound changes that have taken place in the telephone system in the past 50 years.

In the early days, the phone system was a purely local and manual communications system. You'd pick up the earpiece, give the ring generator a couple of turns and wait for the operator to come on the line. She would then connect you to whomever you wanted to speak to. In larger communities as the phone system grew, the switchboard became a horror with dozens of operators supervised by supervisors who wore roller skates to get back and forth to the various positions quickly.

The improvements to this day, including such features as automatic switching and tone dialing, have been dramatic and have made the phone system far easier to use as well as far more useful.

But in addition to these technological changes, have come, recently, legislative and administrative changes. "Ma Bell" has been broken up. There are now several other companies that provide long

distance service. You can buy your own phone and install it yourself, as long as you abide by certain rules set forth by the telephone company. If you own your phones you may also be responsible for obtaining service when necessary.

The effects of these most recent changes, including private ownership of phones and increasing use of cordless telephones are far reaching and only beginning to be felt. We're entering a whole new era of telephone communications. Whether it will be better or worse than the one that's fading into the past remains to be seen.

Whatever the case, now that Ma Bell has been forced to kick us all out of the nest, so to speak, we're going to be to a much greater extent on our own. And now that we're able to make many decisions on our own that used to be made for us, we need information.

This issue of **ES&T** is a first step in that direction. We hope that the technical information presented in this issue helps you understand telephone operation. In future issues we plan to include further information on the many aspects of telephones, including operation, installation and servicing.

If the phone company has taken away Superman's changing rooms, phone manufacturers have probably more than made up for it by making available cordless phones so he can be called when he's needed, anywhere, anytime.

Now, up, up, and away.

Nils Conrad Persson

ELECTRONIC

Servicing & Technology

Editorial, advertising and circulation correspondence should be addressed to: P.O. Box 12901, Overland Park, KS 66212-9981 (a suburb of Kansas City, MO); (913) 888-4664.

EDITORIAL

Bill Rhodes, *Editorial Director*
Nils Conrad Persson, *Editor*
Carl Babcoke, *Consumer Servicing Consultant*
Rhonda Wickham, *Managing Editor*
Jane Cigard, *Associate Editor*

ART

Kevin Callahan, *Art Director*
Joni Harding, *Graphic Designer*

CIRCULATION

John C. Arnst, *Director*
Evelyn Rogers, *Manager*
Dee Manies, *Reader Correspondent*

ADMINISTRATION

R. J. Hancock, *President*
Cameron Bishop, *Publisher*
Eric Jacobsen, *Associate Publisher*

ADVERTISING

Greg Garrison, *National Sales Manager*
Jean Jones, *Production Manager*
Robyn Kahn, *Marketing Coordinator*



Member, Audit Bureau
of Circulation



Member, American
Business Press

ELECTRONIC SERVICING & TECHNOLOGY (USPS 462-050) (with which is combined *Electronic Technician/Dealer*) is published monthly by Intertec Publishing Corp. 9221 Quivira Road, P.O. Box 12901, Overland Park, KS 66212-9981. Second Class Postage paid at Shawnee Mission, KS 66201. Send Form 3579 to P.O. Box 12952, Overland Park, KS 66212-9981.

ELECTRONIC SERVICING & TECHNOLOGY is the "how-to" magazine of electronics. It is edited for electronic professionals and enthusiasts who are interested in buying, building, installing and repairing home-entertainment electronic equipment (audio, video, microcomputers, electronic games, etc.).

SUBSCRIPTION PRICES: one year \$18, two years \$30, three years \$38 in the USA and its possessions. Foreign countries: one year \$22, two years \$34, three years \$44. Single copy price \$2.25; back copies \$3.00. Adjustment necessitated by subscription termination to single copy rate. Allow 6 to 8 weeks delivery for change of address. Allow 6 to 8 weeks for new subscriptions.

PHOTOCOPY RIGHTS: Permission to photocopy for internal or personal use is granted by Intertec Publishing Corp. for libraries and others registered with Copyright Clearance Center (CCC), provided the base fee of \$2 per copy of article is paid directly to CCC, 21 Congress St., Salem, MA 01970. Special requests should be addressed to Cameron Bishop, publisher.
ISSN 0278-9922 \$2.00 + 0.00



INTERTEC PUBLISHING CORP.

©1984 All rights reserved.

The Digital vs. Analog battle is over.

\$85* buys you the new champion.
The new Fluke 70 Series.

They combine digital and analog displays for an unbeatable two-punch combination.

Now, digital users get the extra resolution of a 3200-count LCD display.

While analog users get an analog bar graph for quick visual checks of continuity, peaking, nulling and trends.

Plus unparalleled operating ease, instant autoranging, 2,000+ hour battery life and a 3-year warranty.

All in one meter.

Choose from three new models. The Fluke 73, the ultimate in simplicity. The feature-packed Fluke 75. Or the deluxe Fluke 77, with its own multipurpose protective holster and unique "Touch Hold" function (patent pending) that captures and holds readings, then beeps to alert you.

Each is Fluke-tough to take a beating. American-made, to boot. And priced to be, quite simply, a knockout.

For your nearest distributor or a free brochure, call toll-free anytime **1-800-227-3800, Ext. 229.** From outside U.S., call 1-402-496-1350, Ext. 229.

**FROM THE WORLD LEADER
IN DIGITAL MULTIMETERS.**



Fluke 73

\$85*
Analog/digital display
Volts, ohms, 10A, diode test
Autorange
0.7% basic dc accuracy
2000+ hour battery life
3-year warranty



Fluke 75

\$99*
Analog/digital display
Volts, ohms, 10A, mA, diode test
Audible continuity
Autorange/range hold
0.5% basic dc accuracy
2000+ hour battery life
3-year warranty



Fluke 77

\$129*
Analog/digital display
Volts, ohms, 10A, mA, diode test
Audible continuity
"Touch Hold" function
Autorange/range hold
0.3% basic dc accuracy
2000+ hour battery life
3-year warranty
Multipurpose holster

* Suggested U.S. list price, effective October 1, 1983.



News

FCC approves multi-channel MDS broadcasting

A new method of broadcasting multiple-channel TV programming at low cost has won approval from the FCC, opening the way for MDS service to compete effectively with cable TV throughout many still "un-wired" areas of the United States.

"The potential now exists for extremely low-cost development of MDS stations for pay-TV. With multi-channel capability, such stations can directly challenge cable TV in the many markets where neither system currently exists," says James L. DeStefano, executive vice president of Electronics, Missiles & Communications, Inc., White Haven, PA.

The cost of constructing a multi-point distribution service (MDS) station is around \$100,000, compared with \$30 million for a cable system, DeStefano says.

"Yet, even with this tremendous cost advantage, MDS has not been able to compete with cable, since by law it could only offer one channel of programming. The FCC's decision to add eight additional channels to the MDS band will mean vastly increased competition in the pay-TV industry," DeStefano predicts.

The eight new MDS channels were formerly allotted to the Instructional Television Fixed Service (ITFS) band, used by schools for educational TV. Under the FCC ruling, ITFS stations will still have 20 channels, and existing and applied-for stations are protected under a "grandfather" clause. Schools and universities also will be permitted to lease unused broadcasting time to commercial MDS operators.

"This FCC ruling is especially important to residents of rural or semi-rural areas," DeStefano says, "because MDS broadcasters will now be able to build inexpensive multi-channel systems in these sparsely settled areas. Where

homes are far apart, the cost of stringing cable over many miles can cost millions of dollars. Because MDS operates over the air, the only equipment a consumer needs is a special receiving antenna."

RCA expects videodisc player sales to reach 500,000

By the end of 1983, American consumers will have purchased 500,000 RCA videodisc players and 10 million discs since the introduction of the company's "CED" system, according to an RCA executive forecast.

Steve Bernard, managing director of RCA VideoDisc, said that an accelerating level of software support for videodisc by the major entertainment sources has resulted in an important new business opportunity for many firms involved in video entertainment. Bernard noted that Thorn-EMI had reached agreement with RCA whereby RCA will manufacture "CED" discs containing Thorn-EMI programs for their distribution in the United States and Canada.

In support of RCA's first introduction of the "CED" system outside the United States, RCA will offer an initial catalog of 100 titles to British consumers. Bernard said that 36% of the titles will be in stereo and approximately 1000 retail outlets will be involved in the product's introduction there.

Market research on videodisc in the United States indicates that:

- The average "CED" player owner uses the player about 8½ hours per week. Owners who subscribe to premium cable services use videodiscs about 8.8 hours per week.
- Approximately 70% of videodisc player owners already had cable TV when they bought their players.
- Owners of videodisc players are nearly four times as likely to own a videocassette recorder than the general population, more than three times as likely to have a home computer and twice as likely to own a video game.
- Videodiscs are primarily purchased at an annual rate of between 25 to 30 albums per players.

Feedback

Appropriated issue

I am in the field of electronics and I believe this magazine is one of the best for electronic technicians or field engineers. I am greatly satisfied with my subscription and will undoubtedly resubscribe.

I know there is at least one other field engineer who agrees with my sentiments. The August issue was appropriated from me by one of my co-workers before I had even begun to read it. Please let me know if the August issue can be sent to me for a cost in line with my subscription. Thank you for your service.

Ramon Mendoza
El Paso, TX

Troubleshooting

I appreciate your thoughts and offer sincere praise on your July editorial "What's the Trouble?", the front cover on "Troubleshooting Methods" and the many splendid writers of your magazine. With modern day technology your magazine fills the void for the guy who's troubleshooting. Keep up the good work.

Nick Zam
Lafayette Hill, PA

Grenada reader

I wish to inform you that I have started receiving my magazines and to thank you for your concern. I look forward to receiving them very much as I have found the articles and contributions informative and interesting.

As one of the technicians who reads your magazine, I would like to compliment C. A. Honey for his contribution on special capacitors for television. It is a great article. From the first time I saw your magazine, I have always tried to make sure that I secured a copy until I became a subscriber. Again, thank you for your cooperation.

Cosmos C. Cape
St. George's, Grenada
West Indies

We advanced the technology to make the soldering simple.

By changing the grounded heat sensing tips, the Weller WTCPZ automatically controls output and temperature in three stages (600°F, 700°F and 800°F). Once selected, you can be assured of constant, accurate temperature control without dials to turn or settings to watch. To make working with sensitive components that safe and simple, Weller has incorporated state-of-the-art technology into an attractive impact resistant case, that's ideally suited to assembly work. Check with your Electronics Distributor.



More Weller advances

If voltage transients are your problem, the WTCPZ has a special zero voltage electronic switching circuit to prevent possible damage to sensitive components.

WTCPZ Soldering Station features the WEC24 iron which has adjustable control circuitry completely contained in the handle.

The Weller® WTCP series

CooperTools

The difference between work and workmanship.

BOKER® CRESCENT® LU-KIN® NICHOLSON® PLUMB® WELLER® WISS® XCELITE®
The Cooper Group PO Box 728 Apex NC, 27502 USA Tel (919) 362-7510 Telex 579497
Circle (6) on Reply Card

Test your electronic knowledge

By Sam Wilson, ISCET test director

These questions are similar (but not identical) to questions used on the various CET tests. All questions on the actual CET test are multiple choice, and a grade of 75% or better is required for passing. This month's questions are related to general subject questions in the associate-level test. (Answers on page 57).

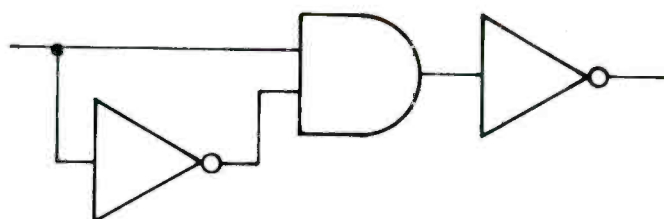
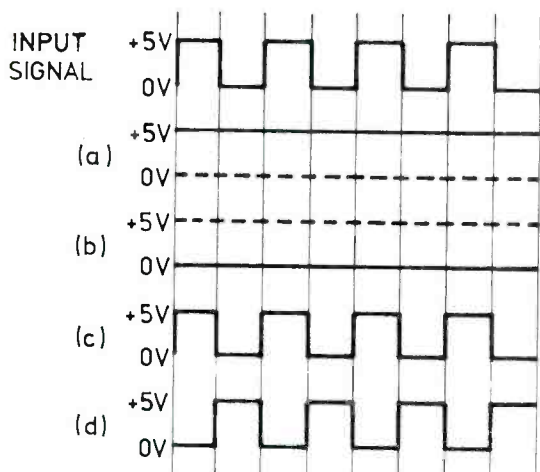


Figure 1



- Figure 1 shows a logic circuit and its input signal. Which of the output signals will result from this input? (Disregard glitches in this circuit.)
 - The solid line in Figure 1(a).
 - The solid line in Figure 1(b).
 - The signal in Figure 1(c).
 - The signal in Figure 1(d).

- What hexadecimal number is represented by the display in Figure 2?
 - ED
 - DE
 - CE
 - EC

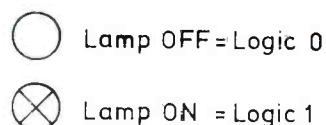


Figure 2

LEADER

We put great features within the scope of your budget.

Get 50-MHz capability with all the features you need. Without paying for features you don't need.

The Leader LBO-525L Oscilloscope is a rugged workhorse that stands up to any task while proving the reliability and precision that made Leader famous. On the bench and production line. In the field. And in classrooms.

The LBO-525L gives you the full range of calibrated delayed sweep and trigger functions, plus two brilliant traces and dozens of ways to use them. All with controls that are simple enough for any student.

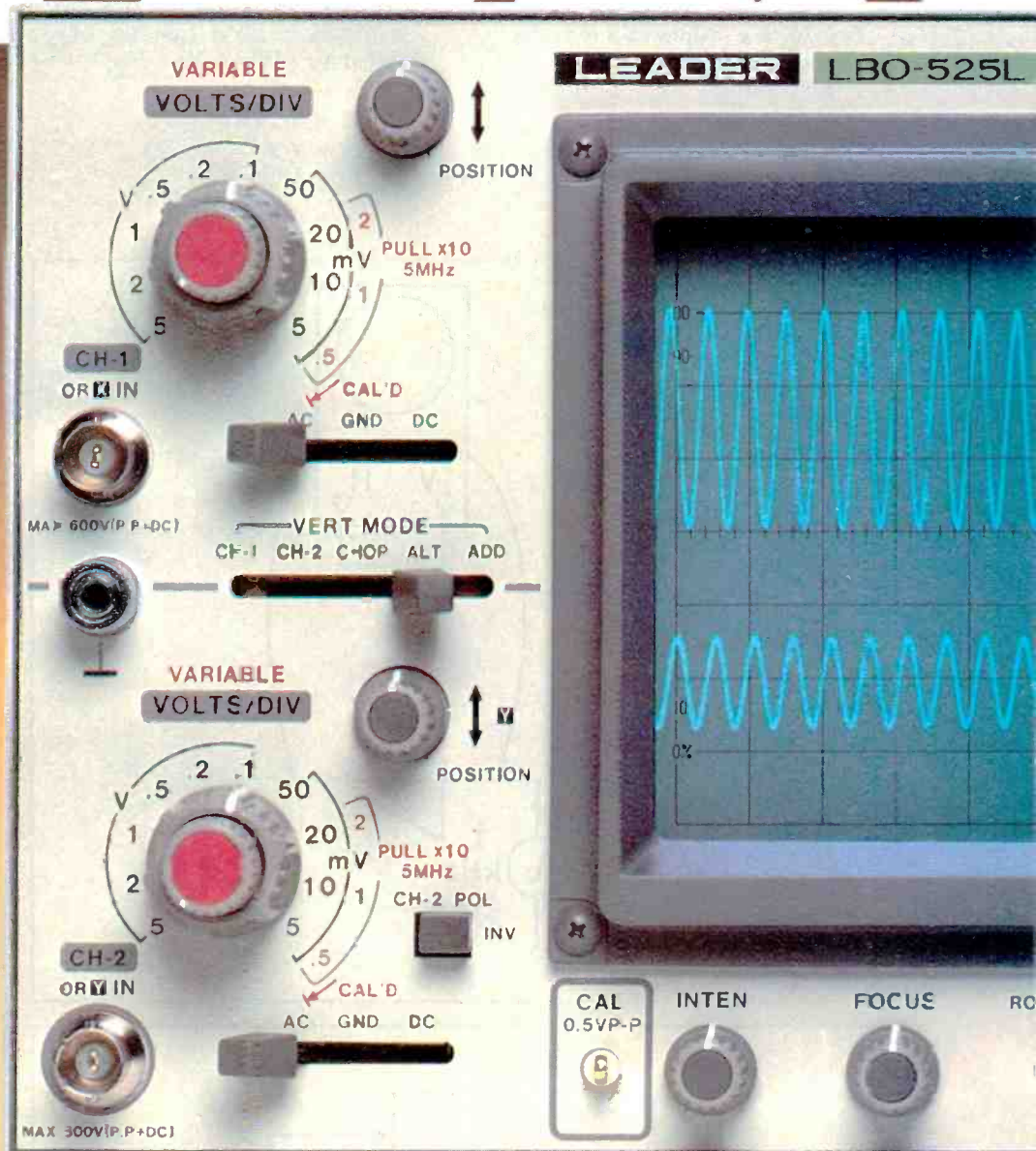
The Leader LBO-525L is everything you expect from an oscilloscope, but the price is less than you expect to pay. See for yourself why it comes with a two-year warranty, backed by factory service depots on both coasts.

Ask for our catalog, an evaluation unit, and the name of your nearest "Select" Leader distributor.

For professionals who know the difference.

LEADER
Instruments Corporation

380 Oser Avenue
Hauppauge, New York 11788
Regional Offices
Chicago, Dallas, Los Angeles, Boston
In Canada call Omnitrax Ltd.
(514) 337-9500



ACTUAL SIZE

Suggested user net \$1195.

Call toll-free
(800) 645-5104
In New York State
(516) 231-6900

For Information Circle (34) on Reply Card
For Demonstration Circle (35) on Reply Card

3. The lissajous test setup in Figure 3 is used for testing the Class A audio amplifier. When the scope controls are properly adjusted, the display should be
- a circle.
 - an ellipse.
 - a straight line.
 - a triangular wave.

4. The test setup of Figure 4 is used for measuring the *capacity* of C. (In the CET test the term capacitance is sometimes used instead of capacity.) When $V_1 = V_2$,
- $R = \pi fC$
 - $R = 1/2\pi fC$
 - $R = v \times C$
 - $R = 1/C$

5. A certain capacitor has a capacity equal to (C). It is charged by connecting a DC voltage (V) across its terminals. The amount of charge can be determined by the equation:
- $Q = C/V$
 - $Q = C + V$
 - $Q = C \times V$
 - None of these equations is correct.
6. Two capacitors are connected in parallel. One has a voltage rating of 500V, and the other has a voltage rating of 1000V. The voltage rating of the combination is
- 1500V
 - $333\frac{1}{3}V$
 - 500V
 - None of these answers is correct.
7. If a VOM is rated at 20,000 Ω /V, it means that
- the resistance (or impedance) of the meter is 40,000 Ω when the meter is measuring 2V.
 - the meter resistance is 20,000 Ω regardless of the voltage being measured.
 - the maximum resistance that can be measured is 20,000 Ω .
 - its meter movement requires 50 μ A for full-scale deflection.
8. Which type of amplifier might contain all of the following circuits: low-frequency compensation, peaking compensation, R-C coupling, and degenerative feedback?
- AGC amplifier
 - Video amplifier
 - RF amplifier
 - Audio power amplifier.
9. There is no L-C tuned circuit in
- an Armstrong oscillator.
 - a Colpitts oscillator.
 - a Hartley oscillator.
 - a phase shift oscillator.
10. Parallax is a possible problem when making measurements with
- a meter having an analog display.
 - a meter having a digital display.

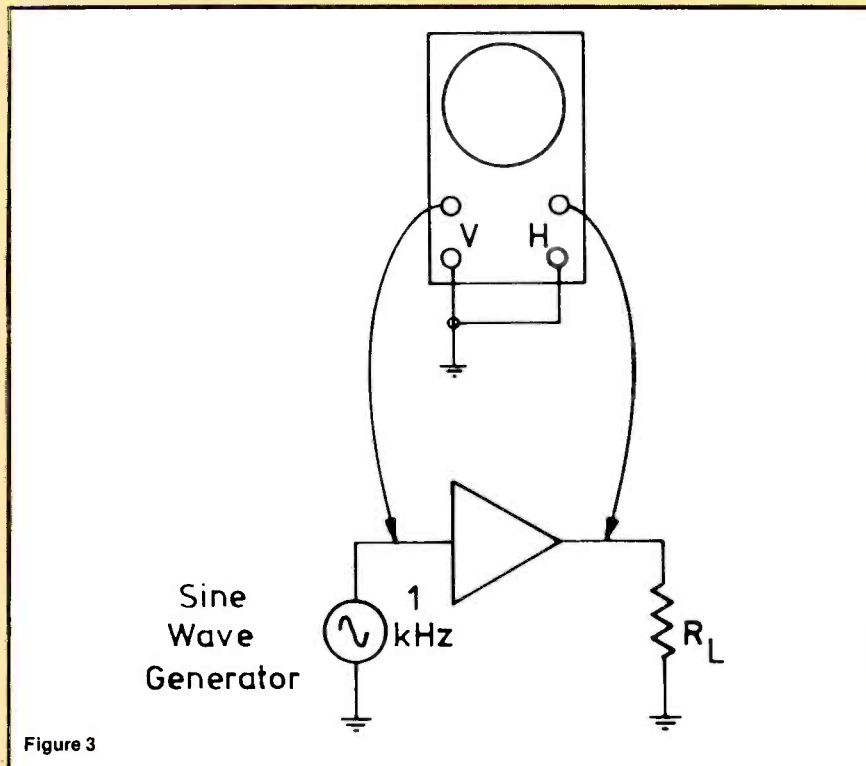


Figure 3

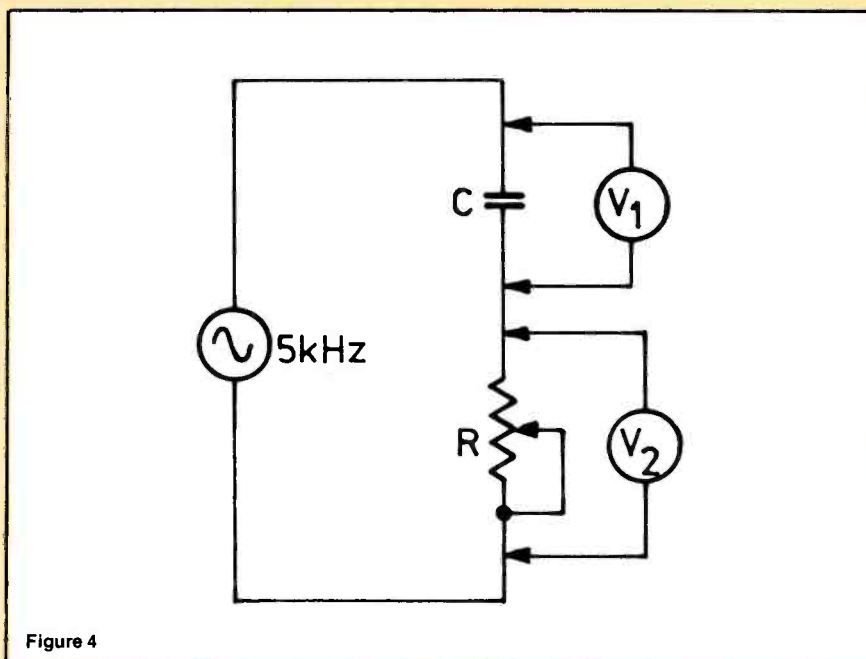


Figure 4

PRODUCTIVITY IS THE KEY TO SUCCESS

DOES YOUR PRODUCTIVITY LEVEL LOOK LIKE THIS?

MATSUSHITA has been a world leader in the consumer and industrial electronics field for many years. As we move through the 80's and into the era of super high technology, it will be necessary for both the engineer and service technician to keep abreast of the latest technological developments.

Matsushita Engineering and Service Company Engineering Support Division has produced a wide range of low cost technical training material for its **PANASONIC, TECHNICS** and **QUASAR** product lines. Our time saving training material includes such literature as:

- Training Manuals
- Video Tapes
- Service Hints
- Collective Sets of Service Bulletins
- Troubleshooting Tips
- Technical Guides

It is the goal of the Matsushita Engineering and Service Company to make it easier for today's technician to keep up with tomorrow's products.

☐ Please send me your catalog listing all Matsushita training literature

NAME _____

COMPANY _____

ADDRESS _____

MATSUSHITA ENGINEERING and SERVICE COMPANY

Engineering Support Division

50 Meadowland Parkway • Secaucus, New Jersey 07094

Attn: Publications Department

Circle (8) on Reply Card

How to troubleshoot VCR servos

By Robert L. Goodman



Typical of many new top-of-the-line VCRs, the General Electric VCR4016X has still pictures, rewind and fast forward while monitoring the picture, several digital readouts and many other features.

(Photo courtesy of General Electric)

All consumer-operated VCRs place the video signal on narrow tracks recorded diagonally across the tape width. Because one complete vertical field of video is recorded on each diagonal track, the vertical-sync signal must be positioned precisely at the designated point on each track (Figure 1). Without that sync-placement requirement, the video heads could be rotated satisfactorily at constant speed by a synchronous motor, which operates at a fixed multiple of the line-voltage frequency. However, because the

vertical sync must be placed accurately, a circuit must monitor the location against a standard, and then perform continuous corrections that place a vertical sync signal at the proper point on each diagonal track. Corrections are not essential for the tape speed (which is determined by the capstan and its motor) during recording, although they are needed for optimum playback.

Additional problems, such as tape stretching, arise during playback. Also, minor tape-speed and track-placement errors from recording usually add to those produced during playback, because the two types seldom cancel. For these reasons, the playback capstan speed usually is servo controlled, in addition to the usual head-rotational speed and phase. Otherwise, the playback video heads will not follow the diagonal recorded tracks precisely.

Minor speed or phase problems can produce an unstable picture, while major variations might replace the picture with out-of-sync stripes. It is impossible to overstate the importance of adequate correction for *all* types of

tape-speed, head-rotation and head-phase errors. Therefore, one or more special circuits must be included to correct most speed and phase errors that originate in the mechanical components and drives. These circuits are called *servos*.

Servo basics

A servo circuit can be compared to the horizontal-phase and color-phase detectors of color-TV receivers. For example, a horizontal-phase detector compares the relative frequency and phase between two input signals and makes continuous adjustments that lock the phase of one signal to the other. Horizontal sync from the station video is the *standard* signal, while a sample of the horizontal-sweep signal is the *feedback* that reveals whether or not its phase is identical to the standard's phase. This is a simple example of a phase-locked loop (PLL) that has the same frequency and phase for both input signals. Any error of frequency or phase between the two signals produces an error-correcting dc voltage that pulls the horizontal-oscillator fre-

quency until the two detector input signals have the same phase.

Servo circuits also require two inputs to produce an error-correcting output signal. One input signal comes from a standard, or *reference*, while the other is a feedback signal from the controlled device. (This feedback is not negative or positive, as used in audio circuits, but is a sensing signal that proves whether or not the controlled device has obeyed the servo's commands.)

In VCRs, a servo must accurately control the rotational speed and phase of the video heads or of the capstan shaft, if that is the controlled device.

Briefly stated, servo operation has two modes: recording and playback.

During recording, rotation and phase of the video heads are corrected by comparison with the vertical sync (the reference signal). These vertical intervals must be at the same desired point on all diagonal tracks, and each video track must contain one complete vertical field. The exact spacing between successive tracks is determined by the capstan speed, which must be constant. Also, a control track is recorded for use during playback.

During playback, the servo's reference is the previously recorded control-track signal that locates the beginning of each diagonal video track, while the video heads produce the TV picture, one vertical field at a time.

Figure 1a shows approximately how the two heads record alternate tracks. Notice that the heads have different azimuths (head-gap alignments) that eliminate most crosstalk between adjacent tracks, particularly during long-playing mode.

Typical servo operation

Figure 2 is the block diagram of a typical servo while it is in the recording mode. Notice the resemblance to a phase-locked loop. Filtered vertical sync triggers a monostable multivibrator (MMV or one-shot). Many variations of shaping and delay have been used. Often the one-shot's output pulse is set for a certain duration. When the next device is falling-edge triggered, this provides a delay. A shaping circuit

changes the TTL-type pulse into a narrow spike, which is the standard (or reference) signal for the comparator.

The feedback signal originates with the frequency-generator (FG) winding inside the motor. This FG waveshape is sinusoidal, which also can trigger a MMV. Often the MMV in turn triggers a multivibrator that has a 50% duty-cycle, square-wave output that is partially integrated to form square waves with parabolic leading and falling edges that can be used as sawteeth. These are called *trapezoidal* waveforms that are the feedback signal at the comparator.

Many servo comparators are sample-and-hold circuits. Each reference pulse samples the edge of each trapezoidal waveform, producing and storing a dc voltage that equals the trapezoid-edge's amplitude when the reference sampling pulse arrives. These stored dc voltages (which vary as the servo operates) are filtered and power amplified before the dc voltage controls the power and speed of the motor. Of course, a higher dc voltage forces the motor to run faster with increased power, while a lower dc voltage

reduces the motor's rotational speed. The servo supplies the motor with whatever voltage is required to make the heads deposit vertical sync at the correct point on each diagonal video track.

The same circuit corrects motor speed and phase during playback, except square waves from the control-track head become the standard signal. Usually, a variable delay control is provided on the front panel to allow manual adjustments that eliminate the instability from tape stretch.

Two video heads

Because the tape is wrapped half-way around the head drum, two video heads (or four in some advanced models) are provided. Each head records or plays one vertical field of 262.5 horizontal lines of video signal. If we assume the *A* head handles the odd-numbered fields, the *B* head must operate with the even-numbered fields as shown in Figure 1b. Of course, a track that has been recorded by the *A* head must be played by the same *A* head, and the *B* track must be played by the *B* head.

To accomplish this, 30Hz

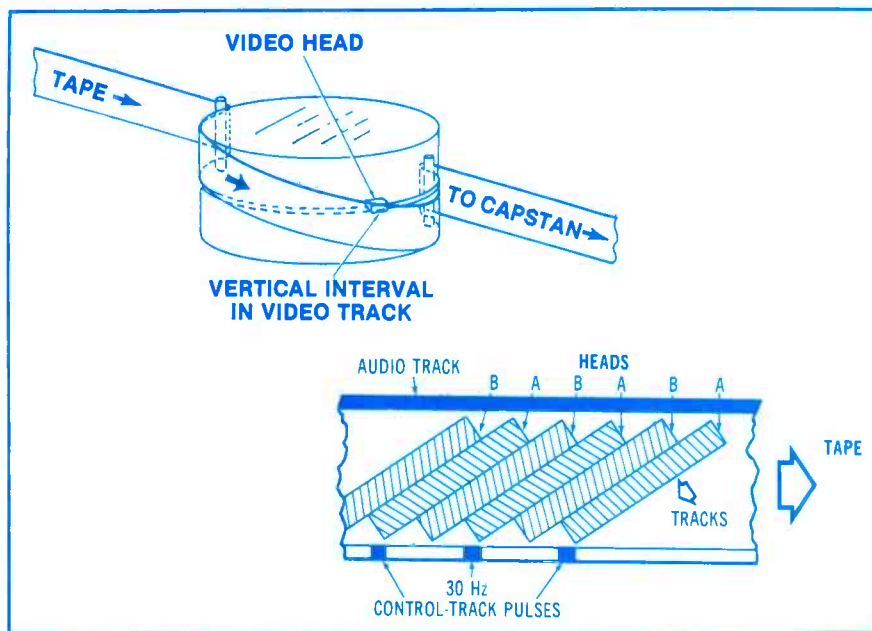


Figure 1. Guides force the tape to travel around the head drum (or cylinder) in a slanted path relative to the machine's baseplate. Therefore, the video heads (which rotate against the inside of the tape wrap) form video tracks that are diagonal to the tape's length. For clarity, the vertical-interval point has been shown at an incorrect location. Two video heads record the diagonal tracks, with each head producing alternate tracks. Slanted lines on the tracks symbolize the opposite-tilted azimuth of the heads (which minimizes pickup of crosstalk from the other head's tracks). A pulse or square wave is recorded on the control track for each *A* track. This control signal is used during playback. (The drawing is not drawn to scale.)

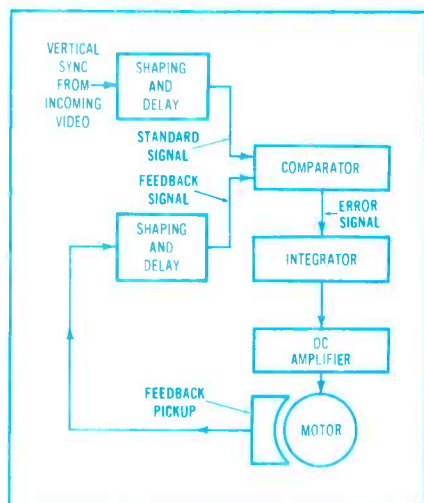


Figure 2. This block diagram demonstrates the operation of a typical VCR servo. The conditions shown are for head-cylinder speed control during recording, but a change of the standard-signal source or the feedback-signal source allows it to operate equally well during playback, or as a capstan servo. Notice the similarities to the horizontal phase detector in a color receiver, and to phase-locked loops (PLLs).

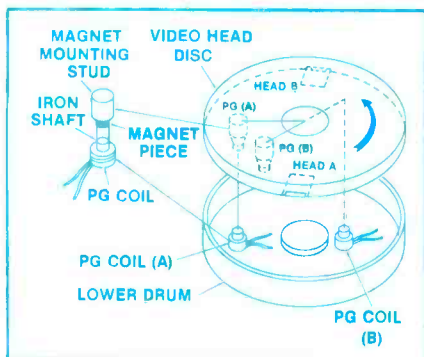


Figure 3. In the head-drum assembly, two rotating permanent magnets and two non-rotating coils produce pulse-generator (PG) pulses for Beta-type VCR servos.

repetition-rate square waves are recorded on the control track during video recording. Because 60 vertical fields are recorded each second, there is one square wave for each odd-numbered track and none for the even-numbered tracks. This in effect identifies the odd-numbered tracks.

During playback, these square waves are processed and become the standard signal for the servo, and the servo forces the heads to play the correct tracks. If the heads are not positioned properly to play the assigned tracks, the servo varies the speed until a match is accomplished, and the picture is locked properly.

Dozens of basic variations and

hundreds of minor differences have been used in various VCR models. However, two models will illustrate most important variations. The Zenith KR9000 (the same as Sony SL-8600) and the RCA VCT400 have been selected for study. Both are older models and should need adjustments and repairs by now.

Zenith KR9000 servo

One servo is provided in this older Zenith VCR of the Beta standard. The head-drum servo system operates a magnetic brake on the drum shaft, which is rotated by belt drive from an ac hysteresis-synchronous motor running at a multiple of the line-voltage fre-

quency. The capstan also is rotated by the same synchronous motor. There is no capstan servo system.

Feedback signal for the servo comes from the pulse-generator (PG) coils located on the video-head disc (Figure 3). The head-drum assembly is a stacked array with a non-rotating upper drum, a rotating video-head disc containing two video heads (spaced 180° apart at the periphery) and two PG magnets, and the non-rotating lower drum. Notice that the PG magnets are not spaced 180°, and they are not the same distance from the center. Their locations vs. spacing of the PG coils in the lower head drum make possible the positive identification of both

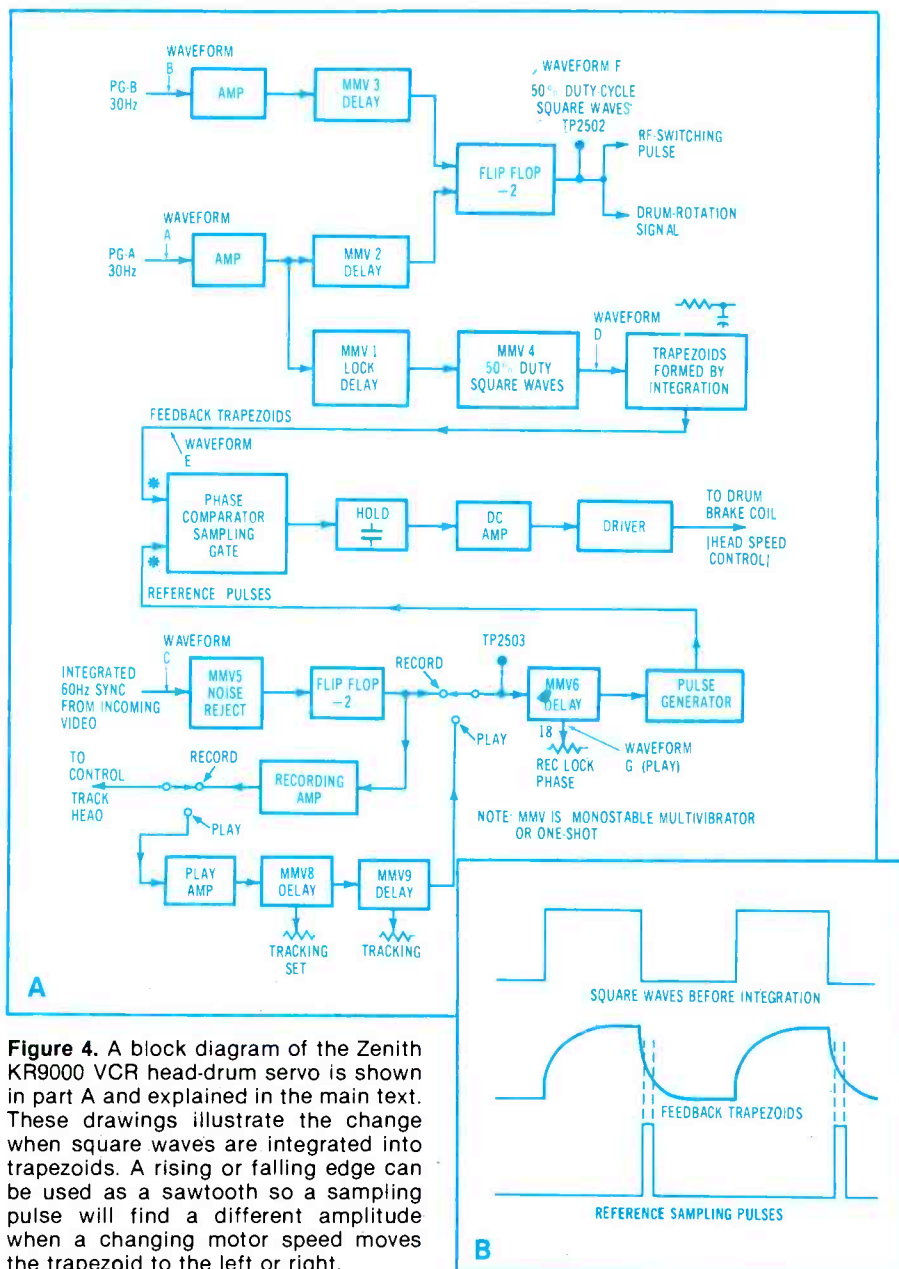


Figure 4. A block diagram of the Zenith KR9000 VCR head-drum servo is shown in part A and explained in the main text. These drawings illustrate the change when square waves are integrated into trapezoids. A rising or falling edge can be used as a sawtooth so a sampling pulse will find a different amplitude when a changing motor speed moves the trapezoid to the left or right.

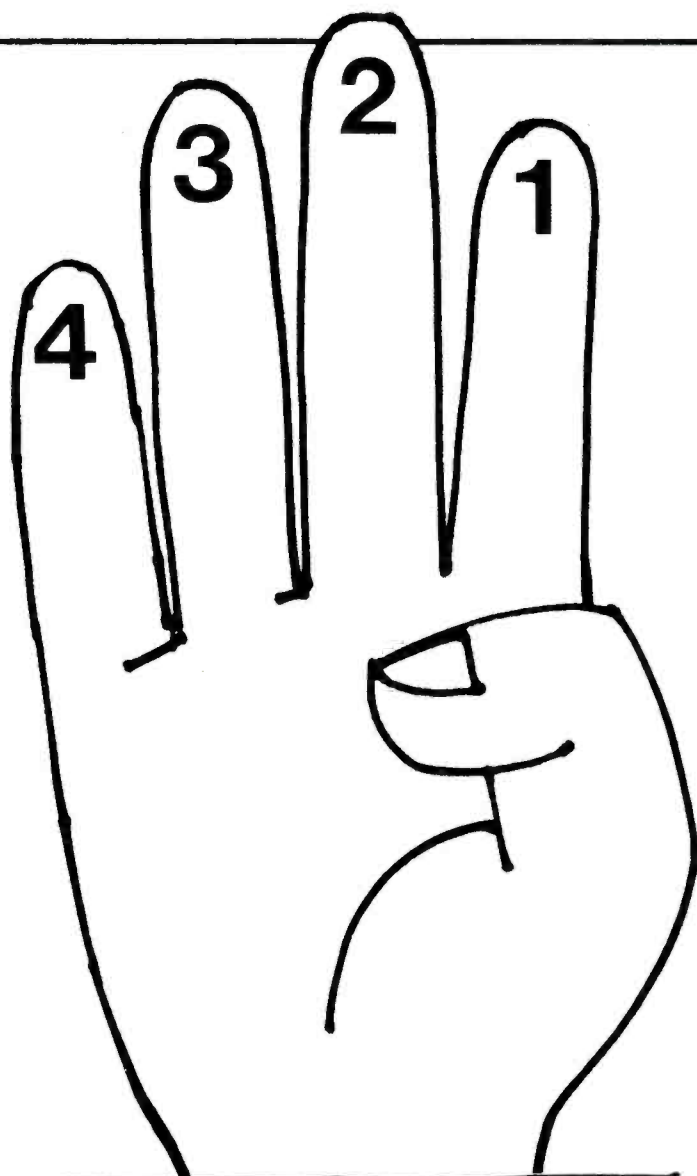
FOUR GREAT REASONS TO USE N.A.P. FACTORY REBUILT MODULES.

1. ONLY N.A.P. rebuilt modules are always updated by our engineers to incorporate the most recent factory modifications.
2. ONLY N.A.P. guarantees genuine, factory approved replacement parts—pre-tested to exacting quality control standards before installation in modules.
3. ONLY N.A.P. provides modules tested to demanding factory quality assurance standards.
4. ONLY N.A.P. guarantees rebuilt modules that perform to rigid factory specifications. Our One-Year Warranty proves it.

PRODUCT SERVICES OPERATION
P.O. Box 555, Dept. 741
Jefferson City, TN 37760
1-615-475-3801, Ext. 7348



**PRODUCT
SERVICES
OPERATION**



**MAGNAVOX
ODYSSEY
PHILCO
SYLVANIA**
AUDIO • VIDEO

A North American Philips Company

Circle (9) on Reply Card

January 1984 *Electronic Servicing & Technology* 15

video heads. This is important, because the same head must play the track it recorded.

Pulses are produced in these 30PG-A and 30PG-B coils when their matching magnets pass them. These two PG-coil signals are not combined, but are sent to separate stages (Figure 4a) on the ARS circuit board. Typical Zenith PG waveforms are shown in Figure 5. One of the first servo troubleshooting steps should be scoping these two PG waveforms at IC501 pin 2 and pin 24. A loss of either or both signals eliminates all picture stabilization.

After they are amplified, both PG signals trigger one-shot MMVs (Figure 4). Outputs from these MMVs trigger a divide-by-two flip flop that produces 50% duty-cycle square waves that switch the RF head signals, and also indicate head-drum rotation.

PG-A signal also triggers MMV-1, and its output signal is changed into 50% duty-cycle square waves that are integrated into approximate trapezoids. Rising and falling parabolic edges of the trapezoids can function as sawtooth ramps for the phase-comparator sampling gate. These trapezoids (Figure 4b) are the feedback input signal to the phase-comparator sampler.

Notice that the PG signals are sources of the servo feedback signal for both recording and playback modes. However, the source of sampling-gate pulses changes from vertical sync during recording to control-track square waves during playback (Figure 4a). Also, notice that a tracking preset and a customer-operated tracking control are included to correct any playback tracking problems.

The waveform drawings of Figure 4b show the principle of obtaining a dc voltage that varies according to the phase between the feedback and standard frequencies.

If the feedback trapezoidal signal moves to the left on a scope screen (because the motor speed is too fast), the reference pulse samples the trapezoid at a lower amplitude point. Therefore, the dc-voltage output signal from the sampling gate is lower. After it is amplified, this lower-than-average dc voltage reduces the

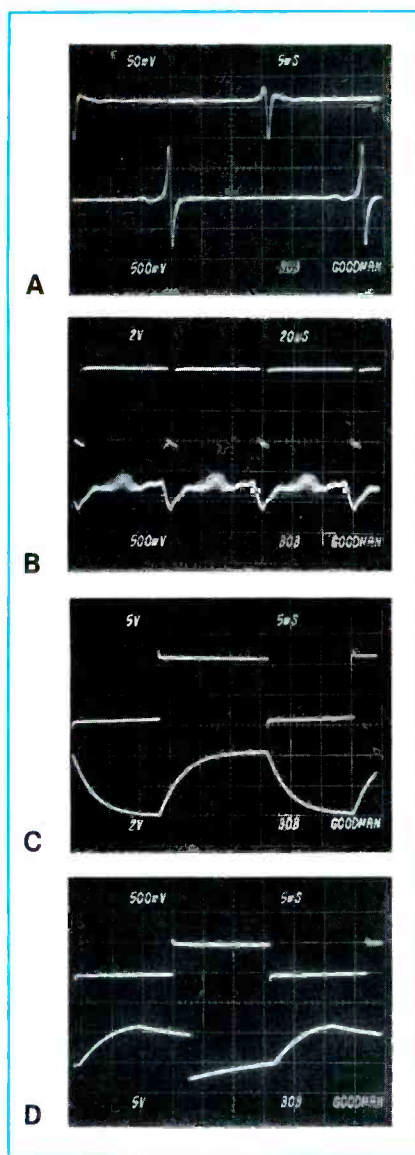


Figure 5. These waveforms were scoped from a non-defective Zenith KR9000. (A) The top trace shows the PG-B pulses called waveform B in Figure 4a schematic, and the lower trace shows waveform A pulses. (B) The top trace shows sync pulses designated waveform C, and the bottom trace is an integrated video waveform, unidentified but probably the input waveform to the sync separator. (C) Square waves (waveform D) at the input of the trapezoid integrator are shown by the top trace. The lower trace shows waveform E, the feedback trapezoids to the sampling gate. (D) The top trace shows the 50% duty cycle square waves (waveform F) at TP2502. The lower trace shows waveform G, which appears at the recording-lock phase control during playback.

motor speed and power, and the lower speed brings the pulse and trapezoid to the proper phase.

If the motor and video head rotation is too slow, the trapezoid moves to the right, forcing the

sampling to occur at a higher amplitude point. This provides higher voltage to the motor, increasing its speed until the head speed is correct.

Small corrections are made constantly to prevent instability of the TV picture. If the speed-correction device is a brake (for example, in this older Zenith VCR), the sampling must occur on the rising edge of the feedback signal.

Beta brake

Figure 6 shows the principle of a magnetic brake. A belt from a motor (usually the same one that rotates the capstan) rotates the head-drum about 1% too fast. Then the magnetic brake slows the shaft rotation to the speed required by the video so the vertical interval is correctly placed on each diagonal video track. Notice that the brake operates at all times with the correct speed approximately centered between maximum and minimum braking.

Magnetic braking is almost instantaneous. Direct current through the brake coil sets up a drag in the rotor (by eddy-current effect). The head-wheel inertia is small, and the motor inertia is decoupled by the belt, so the action is rapid.

In later models, magnetic brakes have been superseded by motor-controlling servos that have separate circuits for correcting speed and phase.

Troubleshooting Beta

Scoping the various waveforms (Figure 5) to identify missing, weak or distorted signals should be one of the first tests made when a servo malfunction is suspected. One method is to check the standard and feedback signals at the comparator sampling gate. If these waveforms are normal, it is not necessary to test the paths that brought them. If one waveform is incorrect, you should scope backward a stage at a time until a normal waveform is obtained. The defect will be immediately following this point.

The picture quality and appearance often can give a clue to the problem. In Figure 7, the defect was the control-track head that produced a weak and erratic signal.

Obviously, a loss of signal from a

SERVICE MANAGERS—!

**You can make
your field force
more efficient—
with the new
METAGRAM 900[®]
pocket
message
center!**

Here is a unique new message system and its receiver—the METAGRAM 900 Pocket Message Center. Ideal for busy service organizations, this proven system can dramatically reduce time and money wasting call-backs to headquarters. Now, your service force can spend more time actually doing service work!

The METAGRAM 900 allows transmission of complete alpha-numeric messages. More than that, messages

may be stored in memory and easily reviewed. Our nationwide network gives the system tremendous scope and versatility.

Ergonomically designed, the METAGRAM 900 is a natural for busy people on the move. For further information contact me today.

Mr. Edward Heinze
Vice President
MILLICOM INCORPORATED
153 East 53rd Street
New York, New York 10022
(212) 355-3574



Circle (10) on Reply Card

Nationwide Service

All message transmission handled through Millicom's nationwide network. For example, a message can be sent from a dispatch center in New York City to a METAGRAM 900 receiver in Los Angeles.

Display

Messages easily readable on the highly visible LCD display.

Hard Copy

Messages may be printed from the METAGRAM 900 memory by an optional Millicom Micro Printer.

Complete Messages with Memory

Service engineers can receive complete service requests in alpha-numeric form. 1,550 character memory stores a multitude of messages. For example, you can store up to 30, 50 character messages.

Group Transmissions

Send one message to a group of people simultaneously. Very useful for notification of engineering changes, over-time requests, scheduling of meetings, parts inventory status, etc.

Latest Technology

Advanced state-of-the-art features make operation simple.



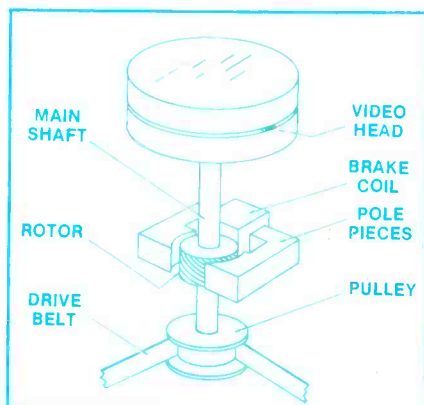


Figure 6. The basic principles of a head-servo brake are shown here. The brake applies variable electronic drag to maintain a constant speed and phase of the head drum.

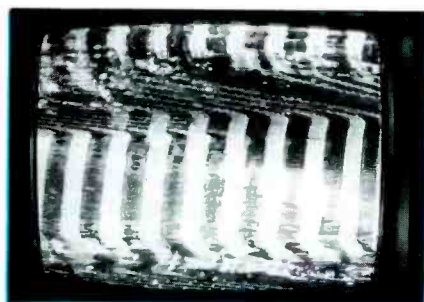


Figure 7. Horizontal pulling of the TV picture was caused by a defective control-track head.

defect in another section cannot be analyzed properly by scope waveforms. For example, some Beta machines monitor the servo signal coming from the rotating video-head drum. When this signal is missing for more than a second, shut-down is actuated automatically. Missing PG pulses might be caused by a jammed tape, a broken drive belt or a defective motor. However, a defect in the PG-pulse processing path also can produce the same symptom.

Therefore, there is no PG signal to be scoped and analyzed. You must perform signal substitution so the circuit will sense a signal and not activate the stop mode. Waveshape and repetition rate of the test signal are not very important, but the level should correspond to the normal amplitude. I have successfully used the transistor vertical-drive signal from a Sencore VA-48 after adjusting the level to 1VPP and connecting to pin 24 of IC501 on the ARS board. This stops the shut-down and allows time to find the cause of the missing PG pulses.

RCA VCT400 servos

An example of older VHS servos is found in RCA model VCT400 VCR, which has both head-cylinder and capstan servos. The video heads are rotated by a direct-drive three-phase ac motor (Figure 8). Sensing of head positions and rotational speed is made possible by a PG signal and an FG signal.

Two magnets are mounted on the head cylinder where they are rotated in turn near one stationary magnetic coil. One magnet has its north pole oriented toward the coil, while the other magnet has its south pole nearest the coil. Therefore, the PG signal from one magnet's movement will be mostly positive-going, and the other magnet's PG signal will be negative-going. These weak PG pulses are pre-amplified before reaching the servo circuit, where the positive and negative pulses are separated by selective amplification, so they can then travel in separate paths. Positive pulses indicate the position of one video head. Negative pulses prove the location of the other video head.

A winding inside the 3-phase, 4-pole motor generates 1800Hz near-sinewaves. This FG is used in the speed-control circuitry that provides 900Hz variable-width pulses for motor control.

A block diagram of the entire head-cylinder/capstan servo system is shown in Figure 9. There

are interconnections between the two systems, so the operation is made more clear by including both circuits. Notice the direct-drive, 3-phase ac head-cylinder motor and the dc-operated capstan motor.

The RCA VCT400 offers a choice of standard play (SP) and long play (LP). The long-play mode allows double the recording and playing time per tape, but the head-cylinder speed is not changed. Long-play mode is initiated by reducing the capstan rotation to half the standard play speed.

During standard play, a narrow guard band of unrecorded space separates successive diagonal video tracks. The slower tape movement during long-play mode allows an overlap of adjacent tracks. Excessive crosstalk is prevented by the $+6^\circ$ azimuth gap tilt of one video head and the -6° azimuth of the other video head. With a FM signal of such high frequency, each head during playback almost totally ignores the signal intended for the other head.

RCA recording

During video recording, vertical sync from the incoming video is frequency-divided, delayed in time (phase delay) by a MMV one-shot, and then filtered to produce pulses. These 30Hz pulses are the reference signal for the cylinder sampling gate.

At the same time, pulses from

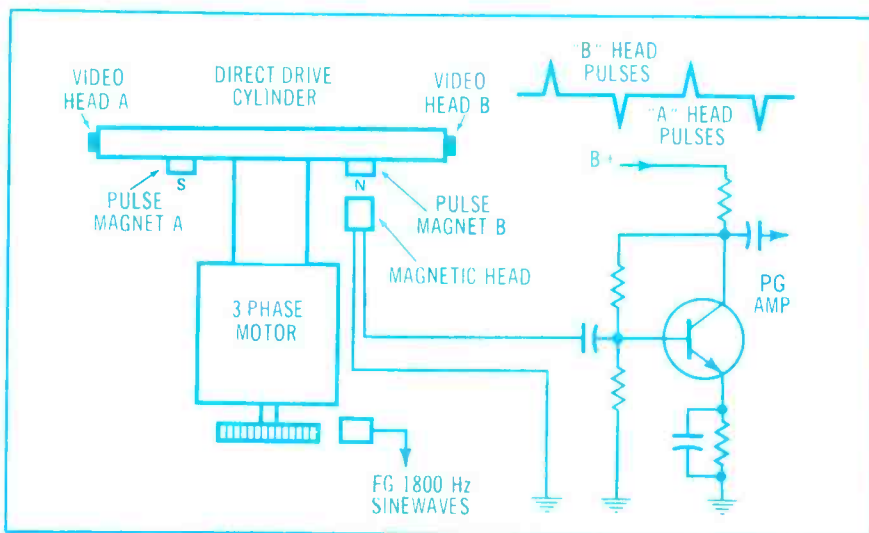


Figure 8. PG pulses in the RCA VCT400 are generated by magnet north and south poles rotated with the video heads on the direct-drive head cylinder (or drum). FG sinewaves are generated by a motor internal winding. The weak PG pulses are amplified before they are sent to the head-servo circuit.

The new N.A.P. Remote Control Cable Converter converts into new sales!



New 1983 Model CTC9R

Now there's the perfect product for your customers who're cable TV subscribers with "non-cable-ready" TV sets—the N.A.P. Cable Converter. Remote control and 60 channel capability are just two of the popular features available on this unique item.

- Remote control (mid-band & super-band capabilities).
- LED programmable clock for automatic on/off operation.
- Favorite station programming (skips over unassigned channels).
- Last channel recall (flips between two channels).

- Sequential scan in upward and downward directions.
- Off air antenna-VHF capabilities.
- Battery check light reduces unnecessary service calls.
- Remote control fine tuning.
- Limited 1 year warranty.

To start converting the N.A.P. Cable Converter into sales, contact your nearest N.A.P. distributor. Or if you're a direct dealer, get in touch with your N.A.P. parts center. Inquire about our full line of cable converters. It's a profit opportunity you'll want to tune into.



**CONSUMER
ELECTRONICS
CORP.**

N.A.P. Product Services, P.O. Box 309, Greeneville, TN 37743-0309/1-615-639-1121

A North American Philips Company

Circle (11) on Reply Card

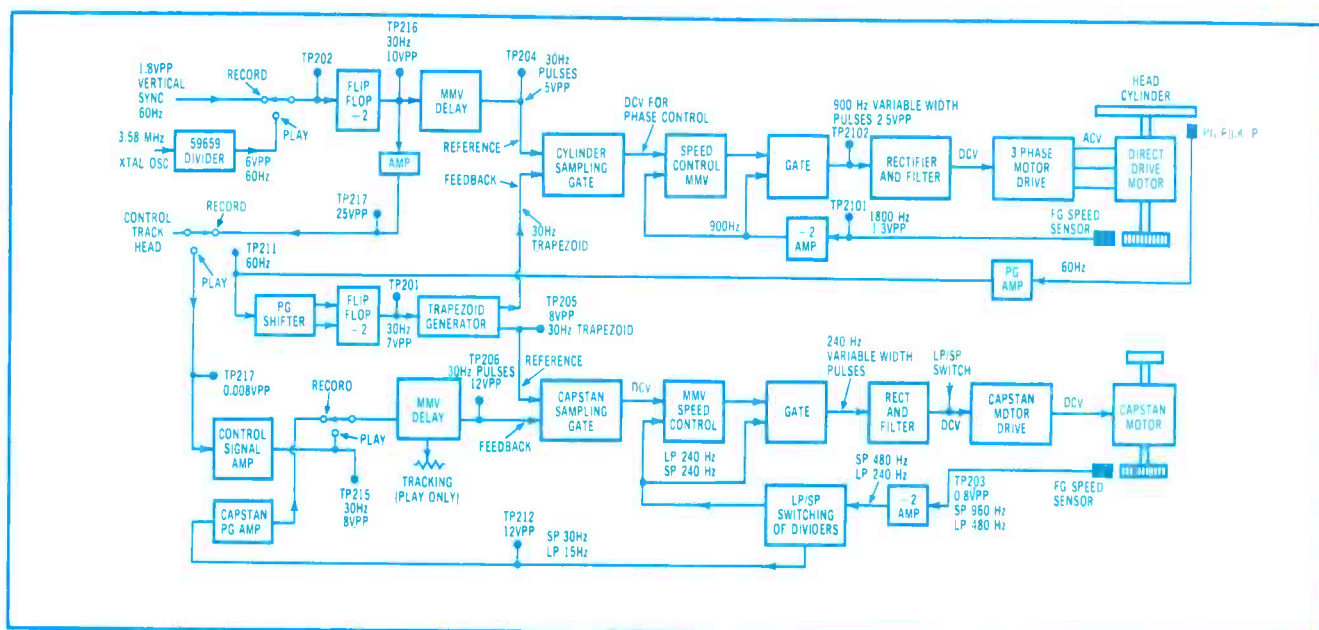


Figure 9. The complete RCA video-head and capstan servo circuits are shown in one block diagram.

the PG pickup are amplified, phase delayed and divided to produce 30Hz 50%-duty-cycle square waves, which are integrated by the trapezoid-generator circuit. These so-called trapezoids are square waves whose leading and falling edges have been changed into parabolas that serve as sawteeth. The trapezoids are the feedback 30Hz input to the cylinder sampling gate. (Also, another sample of the trapezoid signal is used as the reference signal for the capstan sampling gate described later.)

The cylinder sampling-gate output is a variable dc voltage that is one output of the speed-control MMV. The other MMV input is the frequency-divided signal from the cylinder FG winding. The output of the speed-control gate consists of 900Hz pulses rectified and filtered, becoming a varying dc voltage that controls the 3-phase motor-drive circuit. In turn, the motor-drive circuit regulates the 3-phase ac power to vary the head-cylinder motor speed.

In the capstan section of Figure 9, capstan-motor FG sinewaves are frequency divided several times (the division is different for LP mode) and have become the PG signal, because the dividers have changed the sinewaves into square waves. This PG signal passes through the capstan PG amplifier to the MMV (which allows manual tracking adjustments during

playback), and the MMV output pulses are the capstan sampling gate's feedback signal.

The output of the capstan sampling gate is a dc voltage that varies with capstan-speed errors. This dc voltage and the 240Hz square waves from the FG/PG dividers are inputs to the MMV speed control and the gate. The output of the gate is a constant flow of variable-width pulses that are rectified and filtered to drive the capstan-motor driver circuit. A variable dc voltage from the driver circuit controls the capstan-motor speed.

RCA playback

The head-cylinder reference signal during playback is a 3.58MHz crystal oscillator followed by a divider to yield a 60Hz signal. This signal is passed through the *record/playback* switch and on to the cylinder-speed correction and the ac-power stages that drive and control the head-cylinder, 3-phase ac motor. There is no change in the feedback signal during playback.

For the capstan sampling gate's feedback signal, the previously recorded 30Hz square waves from the control-track head are switched to the MMV delay instead of the capstan PG signal used for recording. Otherwise the circuit is unchanged. The capstan sampling gate's reference signal is the same trapezoidal waveform

used during recording.

Servo troubleshooting

Identification of the servo system as the cause of abnormal symptoms is the first step in troubleshooting. Although the specific symptoms take many forms, all problems affect the vertical or horizontal stability of the TV picture. Alternately, the picture might have the vertical blanking bar visible in the picture, either stationary or moving.

Next, several tests should be performed to identify whether the problem involves recording, playback or both. At this point, do not use expensive test tapes. Instead, try to play a previously recorded tape known to be normal. If this test tape plays normally, the problem has a high chance of being in the recording servo operation. However, if you make a test recording and it plays correctly, it becomes almost a certainty that the customer used a defective tape. When your test tape (previously recorded on another machine) plays normally, but a new recording plays back with the original symptom, this is proof of a recording servo problem.

The first step is to check the reference and feedback signals at the proper sampling gate (whatever it is called in that specific machine). If one is distorted, weak or missing, scope

(continued on page 56)

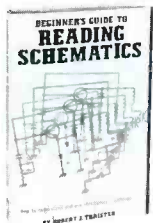


ELECTRONICS BOOK CLUB

The Best Source for Hobbyists and Professionals
for Over 18 Years!

Time- and Money-Saving Advice . . .
Practical Troubleshooting & Repair Tips . . .
State-of-the-art Technology . . . Hundreds
of Projects . . . Plus, Exceptional Savings

Select 6 Books
for Only \$2⁹⁵ (values to \$131.70)



1536
List \$14.95



1537
List \$16.95



1557
List \$14.95



1497
List \$15.95



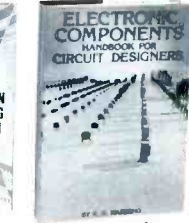
1160
List \$14.95



1199
List \$19.95



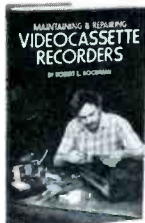
1332
List \$16.95



1493
List \$21.95



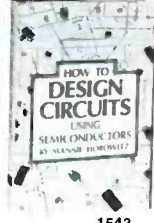
1501
List \$21.95



1503
List \$21.95



1585
List \$21.95



1543
List \$17.95



1296
List \$18.95



1474
List \$15.95



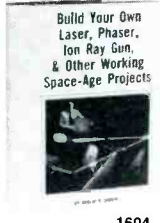
1277
List \$19.95



1306
List \$19.95



1532
List \$17.95



1604
List \$21.95



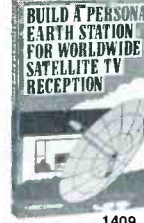
1183
List \$15.95



1436
List \$10.95 (paper)



1506
List \$13.95



1409
List \$15.95

FREE guide to
mail order sources
for electronic parts
and components
A \$6.95
Value!



FREE When You Join Now →

7 very good reasons to join The Electronics Book Club

- **Big Savings.** Save 20% to 75% on books sure to increase your electronic know-how
- **No-Risk Guarantee.** All books returnable within 10 days without obligation at Club expense
- **Club News Bulletins.** All about current selections—mains, alternates, extras—plus bonus offers. Comes 13 times a year with hundreds of up-to-the-minute titles you can pick from
- **"Automatic Order."** Do nothing, and the Main selection will be shipped automatically! But . . . if you want an Alternate selection—or no books at all—we'll follow the instructions you give on the reply form provided with every News Bulletin
- **Bonus Books.** Immediately get a Dividend Certificate with every book purchased and qualify for big discounts of 60% to 80%
- **Extra Bonuses.** Take advantage of added-value promotions, plus special discounts
- **Exceptional Quality.** All books are first-rate publisher's editions selected by our Editorial Board and filled with useful, up-to-the-minute information

ELECTRONICS BOOK CLUB

P.O. Box 10
Blue Ridge Summit, PA 17214

Please accept my membership in the Electronics Book Club and send the 6 volumes circled below, plus my FREE copy of *The Electronics Buyer's Guide*, billing me \$2.95 plus shipping and handling charges. If not satisfied, I may return the books within ten days without obligation and have my membership canceled. I agree to purchase 3 or more books at reduced Club prices (plus shipping/handling) during the next 12 months, and may resign any time thereafter.

1160 1183 1199 1276 1277 1296 1306 1332 1409
1436 1474 1493 1497 1498 1499 1501 1503 1506 1529
1531 1532 1536 1537 1543 1557 1583 1585 1604

Name _____ Phone _____

Address _____

City _____

State _____ Zip _____

Valid for new members only. (Orders outside U.S. or Canada must be prepaid in International Money Orders in U.S. dollars. Canada must remit in U.S. dollars.) This order subject to acceptance by the Electronics Book Club. EST-184

Circle (12) on Reply Card

TELEPHONES

CHANGES ON THE HORIZON

By Mannie Horowitz

Electronic telephones are among the best-selling new products, with features such as automatic redial, memory dialing, and push-button convenience that make conventional phones seem old-fashioned. Wireless telephones have most of these advanced features plus the convenience of operation without restricting wires.

Wireless telephones consist of two basic units. The base station plugs into a telephone modular jack in the home or office, where it is powered by 120Vac. A smaller remote unit (usually with dialing push-buttons) is plugged into the base station when the remote's battery needs recharging (or for convenient storage). At other times, it can be operated at a distance from the base.

When a phone-ringing signal from the telephone line is received by the base station, the signal is changed into an audio tone that is transmitted by a radio carrier to the remote station. If the remote is in the *standby* mode, the audio tone is heard and the remote operator switches to the *talk* mode. This causes the base station to capture the phone line, allowing conversation between the person who

originated the call (to the base station) and the person holding the remote unit.

Simplex telephones

Wireless telephones that employ simplex operation transmit and receive on the same radio frequency. In this case, only one person can speak at any one time. After the phone line is captured, the remote unit listens to the caller, unless its talk button is pressed. When the talk button is activated, the remote transmits, and this signal can be detected by the base station during gaps in the base station's RF output signal.

During these gaps, base-station reception of the remote carrier forces the base station into the *receive* mode, which allows remote operators to talk back to the distant caller. In other words, the person at the remote phone unit determines who is heard. The button is pressed for the remote to talk and is released so the remote can listen. Simplex phones are slightly more difficult to operate but usually cost less.

Duplex telephones

Duplex-type wireless phones are

more popular because they don't require switching for talking. The base transmits on one frequency, usually about 1.7MHz, and the remote transmits in the 49.8MHz band. Because of the large separation of frequencies, both carriers can operate simultaneously without interference.

Normally the remote unit is operated in *standby*, with only the receiver powered, so that a call from the base station can be received at any time. When switched to *talk* or *converse*, the transmitter portion of the remote receives power, and both people are able to talk at any time without any switching.

Typical power supply

Line voltage powers the base unit. After rectification, the dc voltage is filtered and regulated and sent to the various base-unit circuits (Figure 1). A bridge rectifier is usually used so that the dc power can be referenced to ground even though the ac line is not grounded. Because the ac line is ungrounded, it is available for use as an antenna after isolation by RF chokes.

In Figure 1 the regulator is



shown as an IC, represented by a triangle. However, a comparable regulator can be constructed from discrete components, as shown in Figure 2. In this circuit a specific fixed positive voltage (relative to ground) is applied to the transistor base by a resistor and a zener diode. Of course, transistor bias is measured between base and emitter. When power is applied, the B/E bias varies the C/E resistance, which in turn varies the C/E current to produce an emitter-to-ground positive voltage that is about 0.65V less positive than the base's regulated dc voltage. When varying input voltage or varying current load at the emitter changes the emitter-to-ground voltage, the transistor attempts to restore the original voltage by again varying the collector-to-emitter resistance. A voltage supply of fair (but not perfect) regulation can be produced by this circuit.

If the output from either an IC or transistor regulator is low, the first troubleshooting step should be testing the bridge-rectifier volt-

age, which is the input to the regulator. Another possible cause of low regulator output voltage is excessive current or a short in the RF power-output stage loading down the bridge. Excessive current drawn by circuits that are powered from the regulator is another cause of this symptom.

When no abnormal current can be found, the next suspect is the regulator itself. An IC cannot be opened for testing or repair, of course, but the discrete type of regulator can be tested. Zener diodes occasionally open or short, and power transistors are susceptible to failure.

Usually, the remote is powered by Ni-Cd batteries that are trickle-charged when the unit is plugged

into the base station. Figure 3 shows the general circuit of a trickle-charger. R1, D1 and D2 apply a regulated +1.4V between base and ground. About +0.7V is needed between base and emitter as forward bias, so the emitter-to-ground voltage should be +0.7V across R2. Current through emitter resistor R2 is stable at 0.7 divided by the resistance of R2. Because the emitter and collector currents are approximately equal, the battery is trickle-charged at this current.

When the battery is not being charged properly, first test the voltage across the charger output (B+ to Q1 collector) when the battery is disconnected. This open-circuit voltage must be higher than

Figure 2

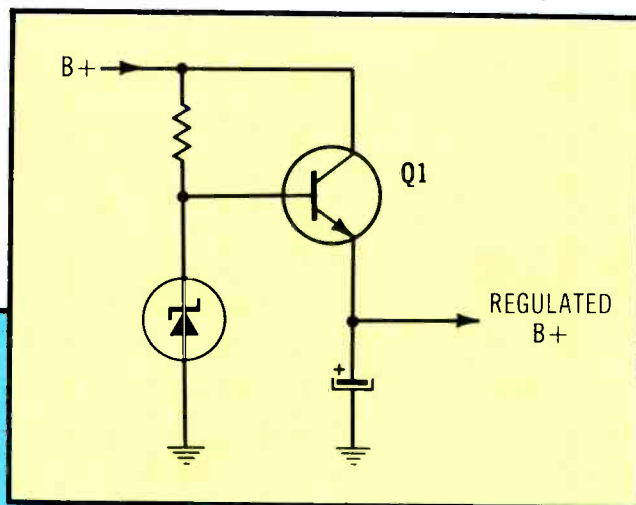


Figure 1

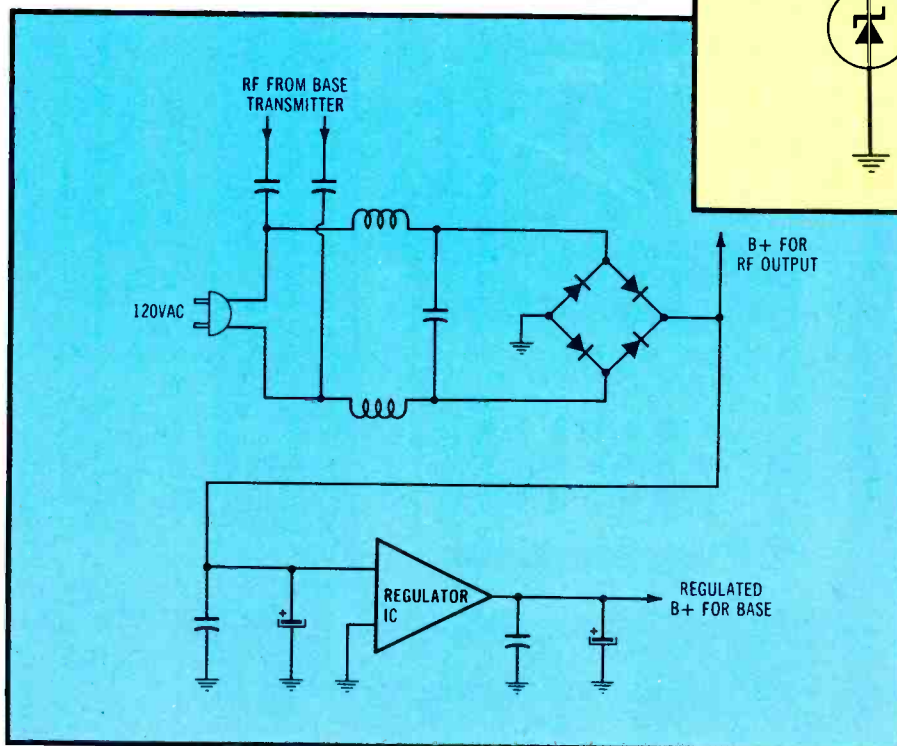


Figure 1. There is nothing unusual in most base-station power supplies, except for the RF chokes and the capacitors that feed the RF to the ac-power line. The power line is used as an untuned long-wire antenna to radiate the signal.

Figure 2. Regulation can be obtained by this circuit consisting of discrete components. The zener diode should be rated about 0.7V higher than the desired regulated B+. Any voltage variations of the regulated supply changes the bias of the transistor, which changes its C/E resistance to correct the voltage change.

Figure 3. This is one type of constant-current circuit that provides proper charging of the remote unit's NiCd battery.

Figure 4. The telephone-line ringing signal is not suitable for alerting the remote unit. Also, it is necessary for the phone line to be insulated from the base station (even the base station ground). This circuit fulfills those requirements and includes a voltage doubler for the ringing signal plus an LED in the light-tight enclosure to prevent erratic operation of the neon bulb. Q2 is a switching transistor, described in Figure 5.

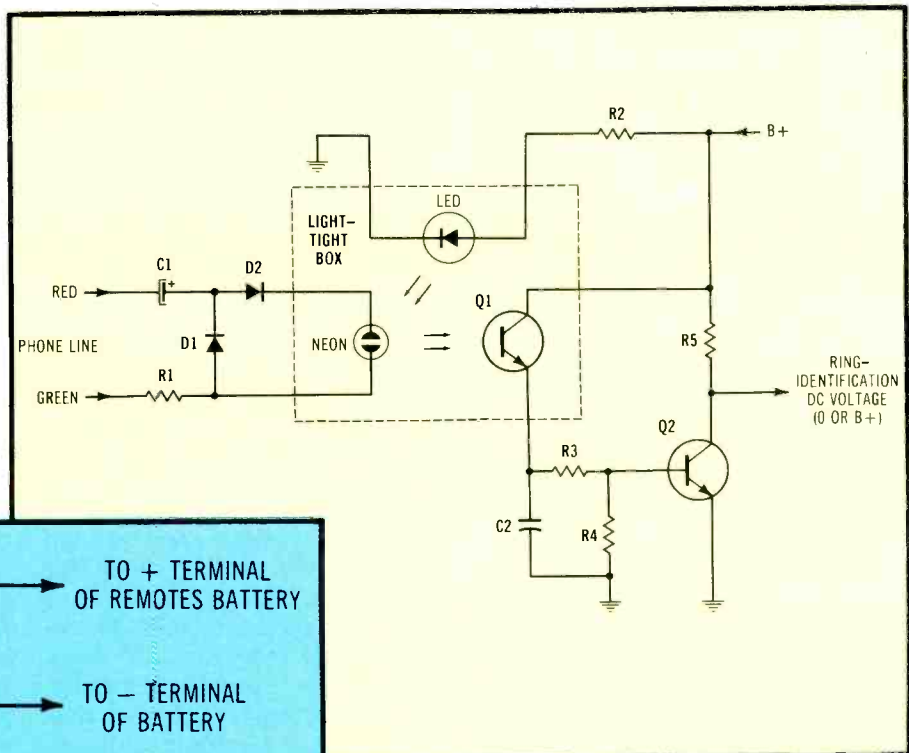


Figure 4

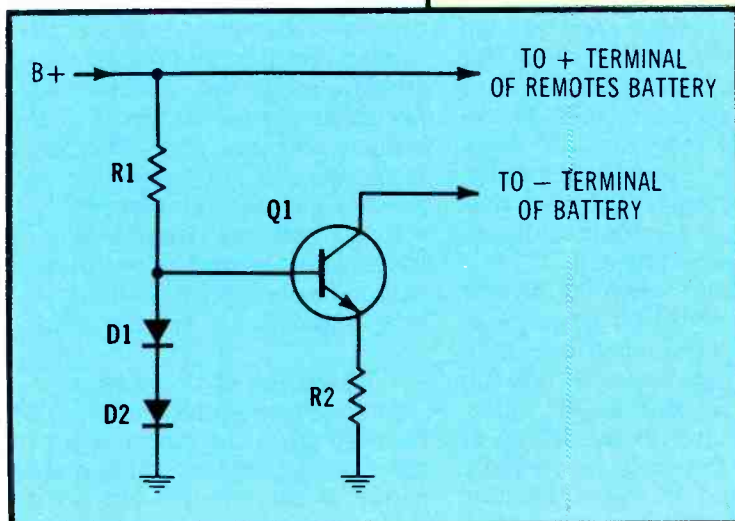


Figure 3

the battery's voltage rating. Also, measure the B+ supply to the charger circuit. Check the voltage across R2 to determine (by Ohm's Law calculation) the charging current. Check all trickle-charger components. If no circuit defects can be found, the battery may be defective.

Calling the remote

Conventional telephones have electrical/mechanical bells that ring when someone calls. This bell-ringing signal is not compatible with electronic telephones, particularly wireless types. Therefore, the signal must be used in another indirect way.

Most telephone systems operate from a dc voltage of 52.5V. When

a phone is called, this voltage is across the two (or sometimes four) wires. In addition, a ringing signal (having an amplitude between 40Vac and 150Vac and a frequency between 20Hz and 60Hz) is superimposed on the 52.5Vdc.

Perhaps the simplest ringing-signal detector has a neon bulb that is lighted directly by the ringing signal. When the neon's light reaches a phototransistor, conduction in the transistor activates some kind of audible signal. This simple circuit has several serious drawbacks and limitations. First, the neon bulb cannot ionize unless the momentary peak voltage exceeds about 65V, while some bulbs require more voltage than is supplied by the phone line. Second,

the bulb and the phototransistor must be in a light-tight enclosure, and when some neon bulbs are in total darkness, they become erratic and require starting voltages higher than 100V peak.

A circuit similar to the one in Figure 4 eliminates those drawbacks. The LED is lighted at all times when the base station is turned on (because it is powered through a current-limiting resistor from the B+ supply). Its light is sufficient to prevent the neon bulb from becoming erratic, but too dim to cause conduction in phototransistor Q1.

Reliable ionization of the neon bulb is assured by a voltage doubler. C1 blocks all steady dc voltages, while allowing the ringing ac voltage to pass. Diode D1 clamps the negative peak of the ringing signal to zero volts, so the entire signal becomes positive (not just one peak, as is true without D1) and passes readily through switching diode D2 to the neon bulb.

When the neon bulb lights to full brilliancy (during each cycle of the

ringing signal) Q1 phototransistor conducts strongly, supplying a positive voltage to C2 and the R3/R4 voltage divider. C2 filters these pulses to a positive voltage with some ripple. Values of R3 and R4 are chosen so Q2 is totally saturated (high forward bias with nearly zero dcV between collector and emitter) during all ringing cycles and completely open (B+ at the collector and zero C/E current) when no ringing signal is present. Values of R3/R4 versus C2 are chosen so Q2 remains saturated until all ringing ceases. Notice that the Q2 collector voltage can be used efficiently to switch other circuits, since the voltage either is nearly zero or almost B+.

Figure 5 shows how the Q2 collector voltage activates a ringing signal in the remote unit. Two circuits are switched. First, a sample of the Q2 collector voltage goes through a limiting resistor to the Q3 base, forcing Q3 into either saturation or non-conduction in reverse of the Q2 condition (Q3 is a saturated inverting switch).

When the incoming ringing signal reaches the base station, Q2 saturates, causing Q3 to become an open circuit. In this state, the Q3 collector draws no current, so although it is connected to the Q6

base, Q6 will oscillate (usually at 1000Hz). This tone frequency modulates the varactor-diode modulator of the 1.7MHz carrier that is transmitted from the base station. When this tone signal is received by the remote, the 1000Hz tone is heard instead of bell ringing.

The FM oscillator, however, cannot operate until bias is applied to Q5. When the incoming ringing signal causes saturation of Q2 (producing a zero collector voltage) a sample is sent to the base of Q4 PNP switching transistor. This is forward bias to Q4, so it conducts positive voltage from its emitter to its collector and through resistors to the varactor diode (for reverse bias) and to the Q5 base circuit (for forward bias). Therefore, the FM reactance and oscillator stages operate normally, broadcasting the 1000Hz tone that is heard in the remote unit, indicating an incoming call.

At other times, when the 1000Hz tone is not needed for ringing, Q2 is non-conducting, and the high collector voltage biases Q3 into full conduction. Because the Q3 collector is connected to the Q6 oscillator base, the base is virtually grounded, and the Q6 transistor circuit cannot oscillate.

Broadcasting to the remote

Broadcasting either the incoming phone audio or the 1000Hz tone (for ringing) to the remote unit is accomplished by driver and RF-output transistor amplifications of the Q5 FM signal. Most driver and power-output transistors are supplied with B+ voltage at all times, but they have insufficient forward bias. Therefore, they do not draw current or amplify until the FM oscillator supplies them with RF signals.

RF power from the output transistor is tuned and sent to the ac-power line via two coupling capacitors (Figure 1). Two RF chokes prevent RF power losses in the bridge rectifier and other allied circuits, while the capacitor connected across the ac inputs of the bridge prevents the RF signal from riding in on the wiring and possibly causing interference.

In essence, the power wiring of the building is used as an untuned antenna to broadcast the base station's signal to the remote unit.

Reception at the remote

At the remote unit, calls can be received when the switch is set to the *standby* position, which applies power to the receiver but not to the transmitter. The receiver is a

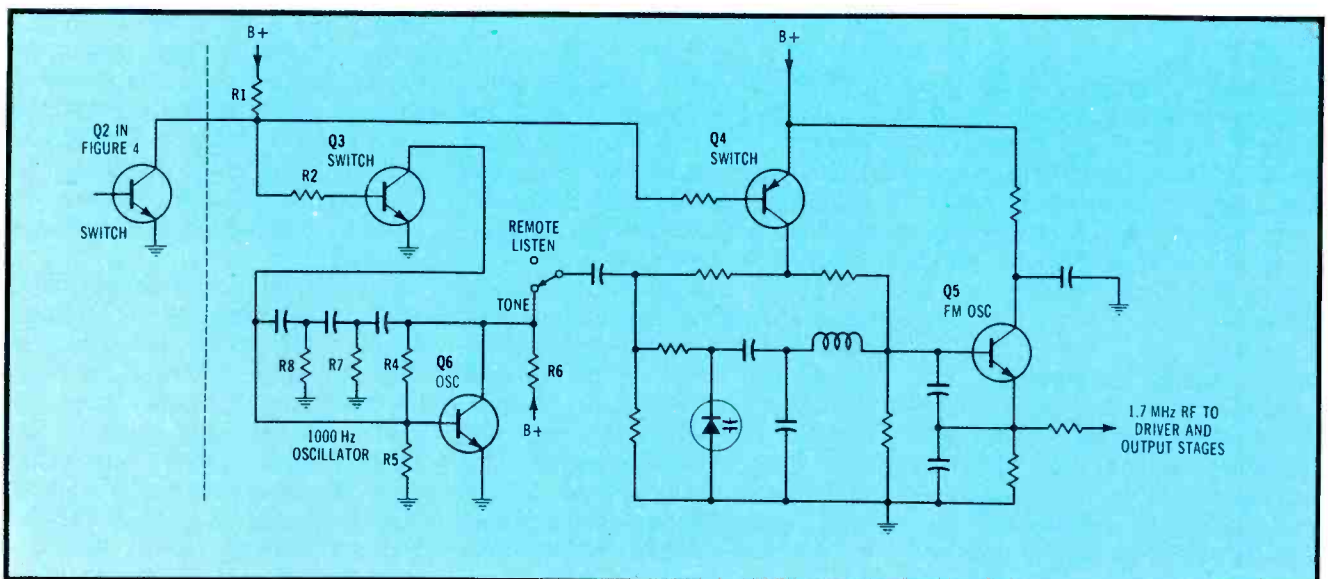


Figure 5. Two actions are necessary when a ringing signal reaches the base station: the 1000Hz oscillator is started and used to modulate the FM carrier that is broadcast to the remote unit; and the transmitter reactance and oscillator stages receive bias. See text for details.

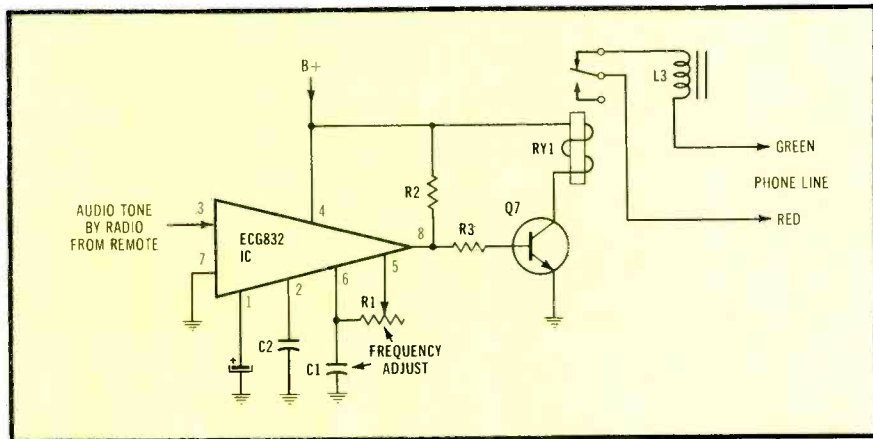


Figure 6. Capturing (locking) a phone line for an outgoing call from the remote unit requires inductance L3 to be connected across the phone line. An audio tone is transmitted from the remote unit to the base station.

simple FM superheterodyne unit.

A call is accepted by the remote unit when the switch is moved to the *talk* position. This activates a phase-shift audio oscillator (between 3500Hz and 7500Hz), which modulates a 49MHz transmitter. A collapsible rod antenna radiates the carrier.

A rod antenna at the base-station unit receives the radiated signal which is amplified and detected in the base receiver. The recovered audio tone is sent to a tone decoder (perhaps a Sylvania ECG832 IC) which produces a near-zero voltage at pin 8 (see Figure 6) when the tone is present, or B+ when the tone is missing. Without reception of the audio tone, Q7 has saturation bias through R3 from pin 8, so the Q7 collector current closes the relay contacts, disconnecting the phone line. When a tone of the proper frequency is received, the near zero pin-8 voltage stops the Q7 conduction and the relay de-energizes, producing a path for the phone line through inductance L3. (Audio for the incoming and outgoing conversations also is developed across L3.) This is capturing the phone line and allows normal operation. L3 has an impedance of about 600Ω.

C1 and the setting of R1 in Figure 6 determines the precise audio frequency that forces higher current through pin 8, thus dropping

the voltage to near zero. R1 is adjusted in the following manner: after audio of the proper frequency is applied to pin 3, the pin-8 voltage is monitored while R1 is rotated. The final R1 setting should be near the center of the adjustments that reduce the pin-8 voltage to zero.

Audio from the phone line is amplified and used to modulate the varactor section of the FM 1.7MHz oscillator. This signal is then received and heard by the remote unit. Simultaneously, output from the microphone (when the remote operator speaks) is amplified and mixed with the 3.5kHz to 7.5kHz keying tone. The mixture modulates the 49.8MHz transmitter in the remote, and the signal is radiated from a rod antenna back to the base unit.

When the 49.8MHz carrier is received and demodulated in the base unit, the two audio signals are separated by a filter. The tone is sent to the tone decoder, previously explained, to maintain the phone line capture, while the audio speech signal (less the tone) is amplified and applied across L3 (in Figure 6). L3 now is across the phone line, so the caller can hear whatever the remote operator says.

After the conversation is over, the remote-unit operator switches to *standby* mode, which energizes the relay that releases the phone

line. With the remote in standby, the system is ready for the next incoming phone call.

Dialing

With a conventional rotary-dial wired telephone, dialing a number is accomplished by first loading the line (with an inductance) to capture it. Then the continuity is opened one time for each dial pulse. If the number three is dialed, the line must open three times in fast succession. In wireless phones, the continuity is supplied by L3, while the open line is obtained by energizing the RY1 relay, which opens the contacts that are in series with the phone line.

Before dialing can proceed, a switch on the remote must be set to the *dial* or *talk* position. Signal then is transmitted to the base unit, the phone line is captured, and a dial tone can be heard at the remote.

Electronic information about which number is to be dialed is supplied to a specialized IC (such as an MM53190). The IC has several outputs that actually perform the dialing. One output controls the conduction of a switching transistor, which shorts the base of the microphone-amplifier transistor to ground during dialing to prevent any speech signals from interfering. A long-time-constant circuit at the switching transistor's base keeps the microphone amplifier turned off between dialing pulses.

Similarly a switching transistor is placed at the base of the input transistor of the audio power-amplifier section in the remote unit. This eliminates dialing noises that might annoy the remote operator. Again the time constant of the control-voltage filter is long to prevent any sound between dialing pulses.

A third terminal of the IC also connects to a switching transistor that is connected to the remote's tone-oscillator transistor. As explained earlier, this stops the oscillation action when capturing the phone line is not needed. Each time the switching transistor receives saturation bias, its collector shorts the oscillator base to

ground. Therefore, when open-line dialing pulses are needed, no tone is transmitted to the base station. No time-delay capacitor is added to this switching transistor's base because fast response is needed. Each time the audio tone is interrupted, the base-station decoder activates the relay, opening the phone line and producing a dialing pulse. For example, three pulses in close sequence, a pause, five in sequence, a pause, and nine in sequence dials number 359.

Other phone features

Logic circuits are used in some top-of-the-line models to perform the functions described previously.

Other circuits silence the remote units when no signal is received. Gain of a base station can be reduced when no signal is being received, and then restored to normal gain when a call is received. Some models can signal the remote when a button on the base unit is pressed. Models with speakers in the base unit can be used as an intercom with the remote as the other station.

With some models, ac-powered battery chargers are offered so that remote units may be charged away from the base station. In this case it is not necessary to bring the remote to the base station at any time.

A few wireless phones are limited to a 100-foot range, but most are rated for 700-foot to 1000-foot maximum distances. However, larger antennas can be added to base stations to extend the maximum range.

Other new features in some electronic phones include battery-condition indicators, end-of-range indicators, dialing-confirmation indicators, a choice of two channels, a switch to select tone or pulse dialing, a mute button for privacy, automatic last-number redial, memory dialing and security codes.

ES&T

VALUE-PACKED COMPONENTS.

In just a few years NTE semiconductors have become the industry standard for quality and value!

That's because, before being packaged in their bright green polybags and cartons, they've been tested on state-of-the-art equipment to ensure they meet or exceed the specs of original devices. And to back up that claim of quality, we back NTE replacement parts with an exclusive two-year warranty.

So, next time you need to replace or design, look for the big green and white NTE. You'll find device type, rating limits, diagram and competitive replacement listed right on the package!

Ask your local NTE distributor for our new Replacement Master Guide, available early in 1984. It lists more than 3,000 quality NTE types cross-referenced to over 280,000 industry part numbers! Or for more information write:



NEW-TONE ELECTRONICS, INC.

44 FARRAND STREET • BLOOMFIELD, NEW JERSEY 07003
(Formerly TCG)



Photofact

These Photofact folders for TV receivers and other equipment have been released by Howard W. Sams & Company since the last report in ES&T.

AOC
Chassis T1L7-3A5, T2L7-3A4, A6 2202-1

CITEK/TEKNIKA
2200/211/232 2203-3
3449/5449 2208-1
Chassis ECC-20378 2209-2

GOLD STAR
CMT-4062 2204-1

HITACHI
CT1329 2201-1
CT1925/28 2203-1

J C PENNEY
685-2037-00 2203-2

RCA
Chassis KCS204CA, CC, CH, CJ 2209-1

SAMPO
Chassis CS-13CS 2206-1

SEARS
564.50221250/1900 2201-3
317.23922250 2205-3

SHARP
FF13662 2201-2
25G50 2204-2
25G100 2205-1

SONY
Remote control transmitter 2203-4,-5,-6

SOUNDESIGN
3772A 2208-3

TEKNIKA
Chassis ECC-20367 2207-1

TEKNIKA/CITEK
3479/5479 2205-2

WELLS GARDNER
19K4901/902/903/904/906/911/
951/952/956, R/961 2204-3
13K4705/706/713 2209-3

ZENITH
S62571P72/1P77/3NE/3NE2/3NE72/
3NE77/5E/5E2/ 5E77/7P/7P2/7P72/
7P77/9X/9X2/9X72/9X77 2202-2,-2-A
SS2333E3/35P3 2206-2
SY2571P, P2 2207-2
S1948W3 2208-2

Troubleshooting Tips Wanted

Electronic Servicing and Technology needs additional consumer-product Troubleshooting Tips. Most types of case histories are suitable, especially those with unique, puzzling or misleading symptoms.

List the brand, model and Photofact number followed by a narrative telling the original conditions or symptoms, the various troubleshooting steps, and the components replaced to restore the original performance. Please include a simple hand-drawn schematic of the stage that has a defect.

\$5 will be paid for each Troubleshooting Tips published. Your name and city will be listed, unless you ask to remain anonymous.

Send all Troubleshooting Tips to:

Troubleshooting Tips Department
Electronic Servicing and Technology
P.O. Box 12901
Overland Park, KS 66212

Now you can build this Handheld Digital Multimeter the easy Heathkit way!

The IM-2215 Handheld Digital Multimeter takes the high resolution of a bench instrument into the field with measuring capabilities to 100 μ V, 1 μ A and 1 ohm. Its 3 1/2 digit liquid crystal display shows DC voltages up to 1000 V, AC voltages up to 750 V, DC and AC current up to 2000 mA and resistances up to 20 megohms. Side pushbuttons allow quick range switching and easy one-handed operation. Kit priced at \$99.95. Send for complete details today using the coupon below. Visa and MasterCard orders call TOLL-FREE: 1-800-253-0570.



FREE COLORFUL CATALOG

Please send me my FREE Heathkit Catalog featuring the IM-2215 Handheld Digital Multimeter and many other quality electronic kits.

Name _____

Address _____ Apt. _____

City _____

State _____ Zip _____

MAIL TO: Heath Company, Dept. 050-132
CL-765 Benton Harbor, MI 49022

Circle (13) on Reply Card

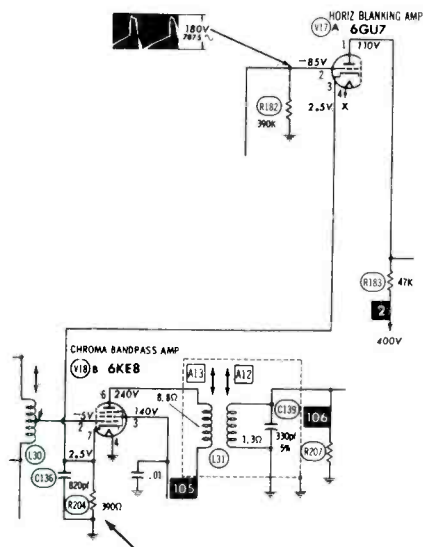
Troubleshooting Tips

Insufficient brightness RCA CTC35A

(Photofact 925-2)

When connected to the shop test jig, the CTC35 chassis provided a dim picture. New video tubes did not help the dark picture, although they are the cause in most complaints about this condition. Voltage tests in the three -Y amplifier stages showed low plate voltages, which in turn reduced the picture-tube grid voltages. Evidently, the low CRT voltages were the basic cause of the low brightness.

Scope waveforms revealed that the horizontal-blanking-amplifier tube (V17A) had no horizontal pulses at the plate. Changing to dc-voltage checks, I soon found a small positive voltage at the blanker grid (should check about -85V) and an excessive cathode positive voltage. After more tracing of the circuit, I noticed that the blanker cathode was connected to the chroma bandpass-amplifier cathode and that they shared a 390Ω resistor to ground. This R204 cathode resistor is located next to the V18B 6KE8 bandpass tube, and it had been burned open. Because a short in either tube can burn up R204, I replaced both tubes and installed a new R204.

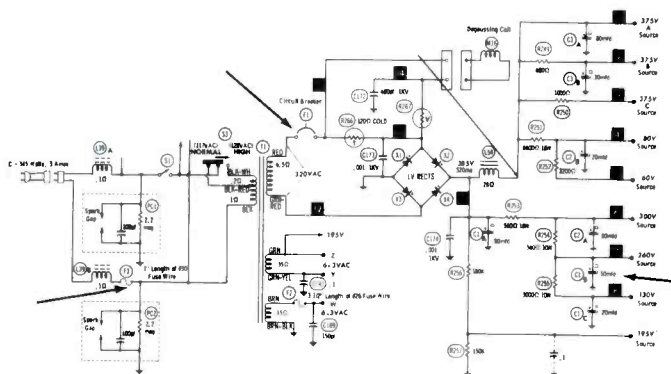


These replacements restored normal brightness, giving a good picture. Now the blanker grid measured -81V and the common cathodes reading was +2.8V. These voltages were within normal tolerance. This repair shows the importance of understanding how the horizontal-blanking pulses are applied to the -Y amplifier grids, where they are rectified to produce negative grid bias, and which affects the brightness. Also, the same grid pulses produce negative-going blanking pulses at the CRT grids.

E. V. Snider, Jr.
Little Rock, AR

No power RCA CTC38X (Photofact 1000-3)

According to the customer, the color receiver went dead as if switched off. No light could be seen in any tube or the dial lamp, but the B+ circuit breaker did not trip. Ohmmeter tests showed normal continuity from the input plug through the on/off switch, but F3 was open. F3 is one inch of #30 fuse wire that is connected in series with one lead of the power-transformer primary winding. I replaced F3 and applied power, but the tubes lighted and then went dark. Again F3 was open.



Evidently, an overload was loading down the power transformer. Why didn't the circuit breaker trip? Instead of installing another F3, I temporarily connected a 5A circuit breaker as a substitute. The tubes lighted and all B+ voltages were very low. In addition, R254 and R253 were operating so hot that they smoked. I disconnected the three loads at C1A and tested each leg for leakage. Resistance tests proved C1B had a leakage of about 2500Ω.

C1 and F3 were replaced and proper operation of the color receiver was restored. Although I knew the problem had been found, I was concerned about the circuit breaker not tripping. An examination of the F1 input-power circuit breaker showed it had been replaced with a 7A rated unit instead of the proper 1.2A. After the breaker was replaced with the correct type, I was satisfied with my logic. Replacing a protective fuse or breaker with a higher-current one can place the receiver in danger. Do not replace fuses or breakers with others of different ratings.

William P. DeRita
Providence, RI

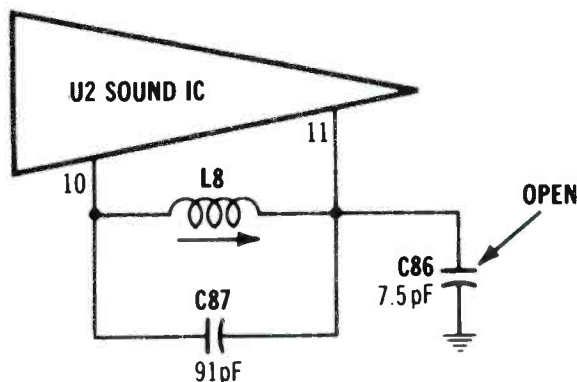
Distortion and low sound volume RCA CTC97

(Photofact 1862-1)

Symcure #1 of the August 1982 issue of **Electronic Servicing and Technology** suggested that C86 was causing weak and distorted audio. There is no doubt that an open 7.5pF C86 will produce audio distortion. Several months later, Frank Fligel (Berwyn, IL) submitted the same tip, but he also stated that a 20pF value could be used if L8 is readjusted for loudest, clearest sound.

Also, I strongly suggest that nothing except the specified temperature coefficient rating be used. Most sound demodulation capacitors are NPO (zero temperature coefficient) type. If the parts list specifies an NPO, do NOT use an ordinary ceramic type. Drift is almost a certainty when incorrect replacements are used.

Later, George Starr (Sebring, FL) wrote about an RCA with the same symptoms, but C86 was not the cause. A defective L8 tunable detector coil produced weak and distorted sound on-channel, but loud noise off-channel. Starr said to remove the L8 shield and notice if the sound becomes normal. In that event, replace L8, install the shield, and adjust the core for the loudest undistorted sound.



These cases illustrate some limitations and helps that can come from symcures. Theoretically, symcures should cover failures that have happened more than one time (ideally, a common failure in that model). Such a knowledge of repetitive failures can save many hours of diagnostic time. However, all experienced technicians know that other component failures often produce the same symptoms. Therefore, if the component failure suggested in a symcure is not helpful in a specific case, check other components of the same stage or circuit. The symcure will be of value if it directs our attention even to the offending stage. Another potential help from symcures can come from similar circuits in different model numbers. Sometimes a manufacturer will retain a certain component configuration for a series of chassis, or over a period of a few years. Therefore, look for similarity of circuits and symptoms, using the suggested defect as a starting point for troubleshooting.

Carl Babcoke, CET
ES&T Consumer Servicing Consultant

Have you solved a difficult troubleshooting problem? Send your solution to:

Troubleshooting Tips
Electronic Servicing & Technology
P.O. Box 12901
Overland Park, KS 66212

DESOLDER-IT, CLEAN-IT, COAT-IT, FREEZ-IT...SEND FOR IT!
Our new electronic problem solving catalog and Free Chem-Wik[®] samplers!

Chemtronics
881 Old Willets Path
Hempstead, N.Y. 11788
800-645-5244
In NY 516-582-3322
Telex 968567

Circle (14) on Reply Card

OPTIMA ELECTRONICS
TO ORDER CALL TOLL FREE 1-800-327-0224
G.E., SYLVANIA, ZENITH, RCA, 75% OFF LIST NEW-BOXED

| | | | |
|-------------------------------|---------------|-------------------------------|---------------|
| <input type="checkbox"/> 3A3 | 5 FOR \$15.75 | <input type="checkbox"/> 6LF6 | 5 FOR \$34.44 |
| <input type="checkbox"/> 6MJ6 | 5 FOR \$34.88 | <input type="checkbox"/> 6LB6 | 5 FOR \$31.50 |
| <input type="checkbox"/> 6JE6 | 5 FOR \$32.75 | <input type="checkbox"/> 6CJ3 | 5 FOR \$14.69 |
| <input type="checkbox"/> 3DJ3 | 5 FOR \$17.44 | <input type="checkbox"/> 6JS6 | 5 FOR \$29.00 |
| <input type="checkbox"/> 6GH8 | 5 FOR \$12.44 | <input type="checkbox"/> 6BL8 | 5 FOR \$12.25 |

All Tubes Not Advertised, Write in at 75% Off List.
Sleeves Only. Singles 72% Off List

HORIZONTAL OUTPUT TRANSISTORS \$1.95 ea. Min. 10, 2 yr. Warranty

| | | | | | |
|-----------------------------------|---------------------------------|-------------------------------|---------|-------------------------------|---------|
| <input type="checkbox"/> RKS1172B | <input type="checkbox"/> RKS238 | <input type="checkbox"/> 500A | \$11.95 | <input type="checkbox"/> 526A | \$14.95 |
| <input type="checkbox"/> RKS1308K | <input type="checkbox"/> RKS165 | <input type="checkbox"/> 522 | \$11.95 | <input type="checkbox"/> 529 | \$15.50 |
| <input type="checkbox"/> RKS1308K | <input type="checkbox"/> RKS165 | <input type="checkbox"/> 523 | \$13.95 | <input type="checkbox"/> 539 | \$15.75 |

REPLACEMENT TRIPLERS

| | | | |
|-------------------------------|---------|-------------------------------|---------|
| <input type="checkbox"/> 500A | \$11.95 | <input type="checkbox"/> 526A | \$14.95 |
| <input type="checkbox"/> 522 | \$11.95 | <input type="checkbox"/> 529 | \$15.50 |
| <input type="checkbox"/> 523 | \$13.95 | <input type="checkbox"/> 539 | \$15.75 |

TRANSISTORS & I.C.'s...MIN. 10, CAN MIX

| T.V. #'s | Pop. I.C. #'s | STEREO #'s |
|----------------------------------|---------------|------------|
| <input type="checkbox"/> 2SC1114 | 712 | DM133 |
| <input type="checkbox"/> MN8303 | 713 | DA101 |
| <input type="checkbox"/> 2SC1034 | 714 | HA1377A |
| <input type="checkbox"/> 2SC867A | 731 | HA1388 |
| <input type="checkbox"/> 2SD870 | 790 | HA1396 |
| <input type="checkbox"/> 2SD871 | 791 | HA1398 |
| <input type="checkbox"/> AN5210 | 793 | UPC1181 |
| <input type="checkbox"/> AN5310 | 819 | UPC1182 |
| <input type="checkbox"/> AN5320 | 820 | UPC1185H |
| <input type="checkbox"/> AN5435 | 821 | UPC1367 |
| <input type="checkbox"/> LM1818 | 822 | UPC1368H2 |

GENERAL

| | |
|--|----------------|
| <input type="checkbox"/> Exact Rep. for SG613 | 5 for \$35.00 |
| <input type="checkbox"/> HI DIV.3 (800-614 equiv.) focus block div. | 10 for \$35.00 |
| <input type="checkbox"/> 6 ft. Cheater Cords SPT2 (Heavy Duty - UL App. 7 Amp. 125V. P & NP) | 10 for \$ 7.95 |
| <input type="checkbox"/> Solder Wick | 10 for \$6.95 |
| <input type="checkbox"/> BSR Changers | \$32.95 |
| <input type="checkbox"/> Replacement Tone Arms (mono & stereo) | 5 for \$6.00 |
| <input type="checkbox"/> Speaker Wire-50ft. 24 gauge | 5 for \$5.00 |
| <input type="checkbox"/> Fiberglass Align Tool Set (5 pcs) | 5 for \$4.00 |
| <input type="checkbox"/> 2.5 Amps 1000 PIV Rectifiers | 100 for \$8.95 |

Quantity Prices Available
Letters of credit and all checks placed on deposit with Bank of Hallendale, FL. VISA & Master Charge accepted. Min. order \$75. FOB Dania, FL. Catalog \$3, refundable upon order.

SEND CHECK OR MONEY ORDER TO:
OPTIMA ELECTRONICS
2022 Tigertail Blvd., Dania, FL 33004
Phone (305) 920-3550 TOLL FREE: 1-800-327-0224

Circle (15) on Reply Card

Positive thinking about negative feedback

By Bernard Daien

Negative feedback (inverse feedback) is an essential part of audio high fidelity amplifiers, instrumentation amplifiers, control systems and automation. Nevertheless, negative feedback itself is usually ignored in the textbooks and manuals for such equipment. When negative feedback is discussed, the treatment includes numerous mathematical expressions, which are not easy to comprehend or to apply directly to practical circuits.

Actually, negative feedback is not difficult. This article covers inverse feedback in a direct way, with very little math. What math is included is no more difficult than that already used by the average technician.

This coverage of negative feedback would be incomplete without including some reference to operational amplifiers, so they are noted. Finally, the effect of negative feedback on input and output impedances is also considered; a practical matter that is usually glossed over, and one that every technician realizes is quite important. This article is basic to the understanding of modern industrial circuits in the control and automation fields, as well as much of the newer home entertainment equipment.

In past years, with simple radio receivers, a drop in gain or signal level was taken care of by manually readjusting the volume control. In an instrumentation amplifier, a drop in amplifier gain results in an error in the readout, which is not acceptable. Negative feedback is useful in both cases. In the receiver, automatic gain control (a form of negative feedback) takes care of signal level variations. In instrumentation circuitry, various forms of negative feedback provide stability despite variations in the gain of the amplifier.

It is widely known that inverse feedback reduces distortion, increases bandwidth, maintains constant gain in spite of changes in supply voltage, aging of components, etc. However, there are many misconceptions about inverse feedback, too. For example, many operational amplifier texts state, "Due to inverse feedback, the operational amplifier is an ideal amplifier...with very high input impedance, and very low output impedance." This is not at all true. Inverse feedback can alter input impedance, making it high or low, and it can also alter output impedance, making it high or low.

A few preliminaries

An understanding of inverse feedback requires getting a few concepts straight. First, look at what is commonly called a *voltage-regulated source*. Such a source does not change its output voltage when the current drain upon it changes (load change). In Figure 1, the constant-voltage source has low internal resistance. If the internal resistance were appreciable, the output voltage would change as the load current changed. Thus, a *constant-voltage supply has a low source (generator) impedance*.

Now look at a constant-current supply, approximated in Figure 2. Note that it consists of a high-voltage source with a high internal resistance deliberately placed in series with it. Because practical

loads are much smaller than the high internal impedance, the current is determined by the limiting effect of the internal resistance, so variations in the load resistance have little effect on the output current. In other words, if the load varies from 0Ω (a short circuit) to 1000Ω, the output current will change less than 1 percent. Thus, a constant-current supply has a high internal impedance.

The above is called the "Black Box" approach, because what matters is not what is actually inside the "box," but how it responds to external circuitry. In this case, the little black boxes are constant current, or constant-voltage generators. It is important to understand this in order to see how this interrelates with the application of inverse feedback, which will be covered later. Using inverse feedback to hold either a current or a voltage constant forms either a constant current or a constant-voltage source, which in turn, is either a high, or a low impedance circuit. Feedback can be applied to make any desired input or output impedance.

Figure 3 is the block diagram of a simple audio amplifier in which the output is 180 degrees out of phase with the input. It is sampling the output voltage by means of a divider, and feeding a percentage of the output voltage back into the input as negative-voltage feedback; in this case, 10 percent feedback because it is feeding one tenth of the output back into the input via a ten-to-one voltage divider. (Expressing 10 percent as a decimal: it is 0.1). Although it is common to talk about feedback as a certain percent, it is simpler to write it as a decimal when doing calculations, so Table 1, percentage vs. the decimal equivalent, is included for your convenience.

Note: the ratios in the table show the ratio of the divider required to produce the desired percentage of feedback in a practical circuit. A one-tenth divider would consist of the circuit in Figure 3. The ratio of voltage output to voltage input of

the divider is one-tenth, even though the ratio of the resistors is 9:1. That's because the total resistance of the divider is 10,000Ω, and the feedback circuit is tapped down at only 1000Ω, which is one-tenth of the total.

| Table 1 | | |
|---------|---------|--------|
| Percent | Decimal | Ratio |
| 10 | 0.1 | 1/10 |
| 5 | 0.05 | 1/20 |
| 1 | 0.01 | 1/100 |
| 1/10 | 0.001 | 1/1000 |

The voltage gain of the amplifier in Figure 3 will be shown to be 10 with the feedback switch closed. This is known as the closed-loop gain. With the switch open, the

feedback loop is opened, and the gain rises to the gain of the audio amplifier itself (no feedback). This is known as the open-loop gain. Closing the switch reduces the gain of the circuit. This gain reduction is the "trade-off" for the benefits of negative feedback. A simple math formula is used to predict the closed-loop gain, if the open-loop gain and the percent of inverse feedback are known.

$$A_{CL} = A_{OL} / [1 + (H \times A_{OL})]$$

where A_{CL} is closed-loop gain, A_{OL} is open-loop gain and H is feedback expressed as a decimal.

Do this equation for the amplifier in Figure 3. The percent of feedback is known, but a figure must be chosen for the open-loop gain, which leads to an important practical point. *This equation works perfectly when the open-loop gain is much higher than the closed-loop gain, but is in error when the*

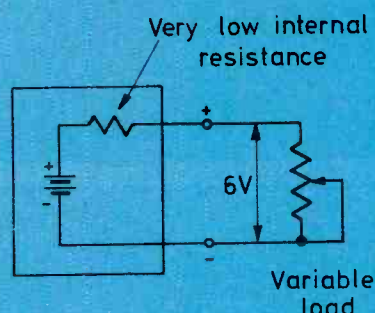


Figure 1. A constant-voltage source exhibits low internal impedance.

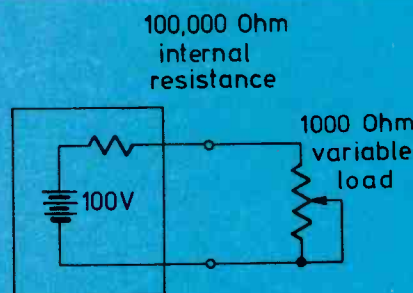


Figure 2. A constant-current source consists of a high-voltage source with high internal resistance.

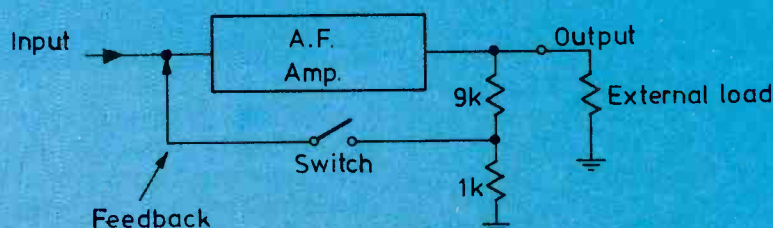


Figure 3. The voltage divider arrangement feeds back 10 percent of the output signal to the input, out of phase, when the switch is closed.

open-loop gain approaches the closed-loop gain. This tells you that you must use an amplifier with a high open-loop gain if you intend to wind up with a reasonably high closed-loop gain.

If you start out with an amplifier that does not have a high open-loop gain, then you can only use the formula with accuracy if you are content to have a low closed-loop gain. In other words, the error increases as the closed-loop gain approaches the open-loop gain. As a practical rule, you would want a ratio of 100:1, which would give you an error of only 1 percent in your calculations. (Because most resistors have a tolerance of more than 1 percent in many practical circuits, this is acceptable. Of course, in an instrumentation amplifier or other precise application, you might want to increase the ratio, and the resulting accuracy of calculation. This is why most operational amplifiers have an open-loop gain in the hundreds of thousands.

Another important point is that the gain will depend on the ratio of the resistors used in the feedback loop, and they must be precision resistors if you expect an accurate result. You cannot simply "select" the precise value of resistor you need out of cheap composition types, because they will not have the long-term stability required. If they drift, the gain will drift, and so will the other characteristics of the closed-loop circuit. The characteristics of the circuit are no longer dependent on the characteristics of the amplifier but are now dependent on the feedback network.

To demonstrate this, here are some calculations based upon the feedback equation, and a table of results. Using the circuit of Figure 3, and assuming an open-loop gain of 10,000, put the values into the equation as shown:

$$A_{CL} = 10,000/[1 - (-0.1 \times 10,000)]$$

Notice the minus sign in front of the 0.1, which indicates that the 10

percent inverse feedback (expressed as a decimal) is a *negative number*. This indicates a *phase reversal*. Of course, when you multiply a negative by a negative, the result is a positive so look at the next step as the calculations unfold, step by step.

$$A_{CL} = 10.00/[1 + (0.1 \times 10,000)]$$

which leads to

$$A_{CL} = 10,000/(1 + 1000)$$

which equals $10,000/100 = 9.99$ (10 with an error of one-tenth of 1 percent). Remember, it was stated earlier that the gain would be 10. How was it possible to know that? By a simple short-cut. Look at the promised tabulation of results.

Table 2
Amplifier with ten percent
inverse feedback.

| Open-Loop Gain | Closed-Loop Gain |
|-------------------|---------------------|
| 10,000 | 9.99 |
| 1,000 | 9.90 |
| 100 | 9.09 |

Table 3
Amplifier with constant
open-loop gain of 10,000.

| Feed — back percent | Closed — Loop Gain | Divider Ratio |
|---------------------------|--------------------------|------------------|
| 20 | 4.998 | 1/5 |
| 10 | 9.990 | 1/10 |
| 5 | 19.96 | 1/20 |
| 2 | 49.75 | 1/50 |

Table 2 demonstrates what happens if the 10 percent feedback is kept constant, but the open-loop gain of the amplifier is changed.

Ideally, with 10 percent feedback, this amplifier should have a closed-loop gain of precisely 10. It is within one-tenth of 1 percent of

that ideal when the open-loop gain is 10,000. It is within 1 percent when the open-loop gain is 1000; still quite acceptable for most uses. However, when the open-loop gain drops to 100, the closed-loop gain is only 9; a significant 10 percent error from expectations. This demonstrates what we previously noted: the open-loop gain *must* be much higher than the closed-loop gain for the system to work effectively.

There is another important lesson to be learned from Table 2. Notice that if the open-loop gain drops from 10,000 to 1000, a drop in gain of 90 percent, the closed-loop gain drops less than 1 percent. This proves that the closed-loop gain is independent of gain variations in the amplifier because of time, temperature, voltage changes, etc.

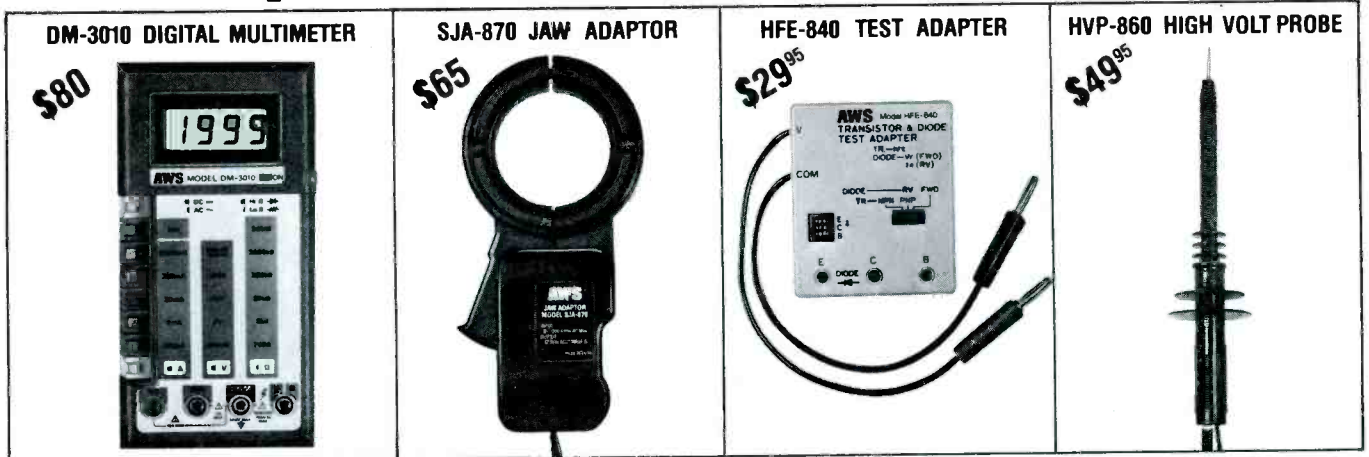
Now look at Table 3, which keeps the open-loop gain constant at 10,000 but changes the percent of feedback.

Notice that when the feedback percentage is 20 percent, or one-fifth of the output, the closed-loop gain is five, and the feedback-divider ratio is 1/5. It is no coincidence that when the feedback percent is 10, the gain is 10, and the divider ratio is 1/10. When the feedback is 5 percent, or 1/20 of the output, the gain is 20, and the feedback-divider ratio is 1/20. The feedback divider ratio tells you the closed-loop gain. *Just invert the divider ratio and you have the circuit gain.*

Of course, this indicates another important fact. The circuit gain may be independent of the amplifier open-loop gain drift, but it is directly dependent on the ratio of the feedback divider, so you had better use precision, high-stability resistors in your feedback networks when you repair, modify, or build feedback amplifiers.

In addition to adjusting the gain, negative feedback affects a number of other circuit parameters: frequency response, distortion, input impedance, and output impedance.

The new AWS DM-3010. It's not just another DMM. It's a complete electrical/electronic testing system.



Today's electrical and electronic testing requirements call for equipment that can handle a wide range of applications. That's why now more than ever you need the new AWS DM-3010 Testing System.

To start off with, the **DM-3010 Digital Multimeter** has an unbelievable \$80 price tag. It offers 34 ranges with push-button control plus features usually found in much more expensive models such as: 10 Amp AC/DC range; UL1244 type test leads; overload protection on all ranges; Hi and Low power ohms in all resistance ranges and more.

Complete the system by simply adding the following accessories as you need them...

SJA-870 Snap-Around Jaw Adaptor. Reads 0-1200 Amps AC. Its large jaws fit easily around any conductor up to 2-15/16" in diameter.

HFE-840 Test Adapter. If your work requires transistor and diode testing, this pocket-size adapter is a must.

HVP-860 High Voltage Probe. Provides safe, easy and reliable readings of 0-50KVDC on low power high impedance circuits.

So compare the DM-3010 Testing System for yourself. You'll find that no other company offers a comparable system at these low prices.

For more information on the AWS DM-3010 Testing System, see your local distributor today or contact A.W. Sperry Instruments Inc., P.O. Box 9300, Smithtown, N.Y. 11787. Call Toll-Free 800-645-5398 (N.Y., Hawaii, Alaska call collect 516-231-7050).

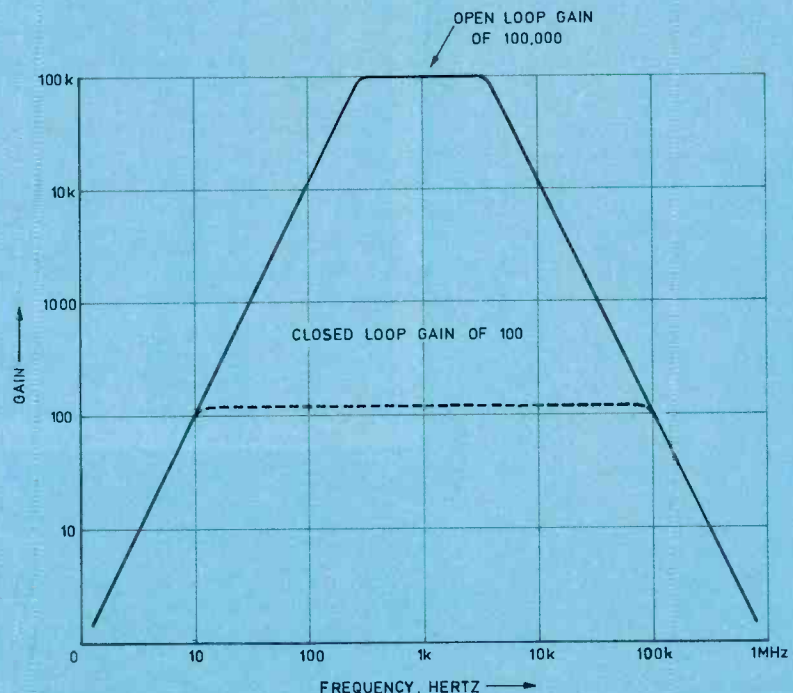
A.W. SPERRY INSTRUMENTS INC.

Circle (30) on Reply Card

Frequency response

The graph shows a typical gain-vs.-frequency-response curve for a high-gain amplifier. Superimposed on the figure is a dotted line at some reduced gain (as might be produced by the use of inverse feedback). Notice that at reduced gain the bandwidth will increase markedly.

If you look at the data sheet for a typical operational amplifier (integrated circuit), you will find that the bandwidth with open loop is poor, but because op-amps are used with inverse feedback, the closed-loop frequency response is very good. The amount of improvement depends on how much the gain is reduced when going from open loop to closed loop. This reduction in gain is called the *Gain Reduction Factor*. If the open-loop gain is 100,000 and the closed-loop gain is 100, the gain reduction factor is 1000. This gain reduction factor is the key to the improvement in stability, bandwidth and the reduction in distortion. *The greater the gain reduction factor, the greater the improvement in performance.* (This was stated in another way earlier in the article, when it was noted that the error in calculations became significant as the open-loop gain approached the closed-loop gain; i.e. as the gain reduction factor was reduced.)



Negative feedback reduces the gain of an amplifier, but increases the bandwidth.

Input impedance

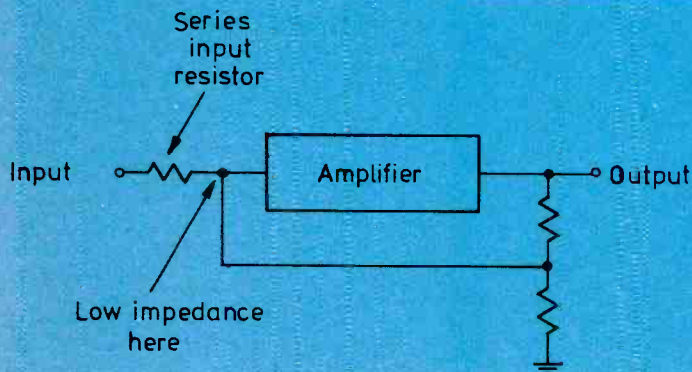
Many texts give the impression that somehow the gain of the amplifier is reduced by negative feedback. This is obviously not true. An op-amp is an IC, and nothing changes inside the IC when the loop is closed, so the gain of the IC itself does not change.

What happens is that the output signal is out of phase with the input signal. When some of the output signal is fed back into the input, it *cancels out some of the input signal*. Because the output signal is much larger than the input signal, feeding back even a small portion of it into the input is enough to almost completely cancel out the entire input signal.

As a result, if you use an instrument to look at the input to the amplifier with the loop closed, you will see only a small signal, which approaches zero amplitude. If you have never serviced such a feedback amplifier, you could easily assume that there was no input signal and that the previous stage was defective. Not so. The system is operating properly.

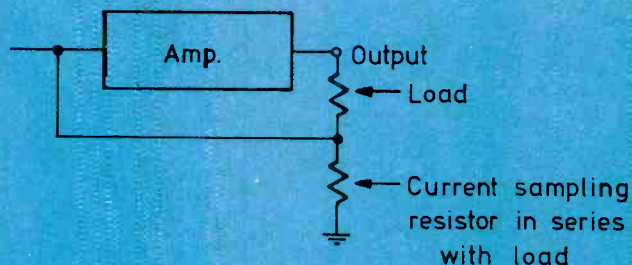
Because the input to the amplifier is close to zero with the feedback loop closed, the input to the amplifier resembles a short circuit to ground, or close to zero input impedance. The previous stage is putting out a normal signal, but at the input to the amplifier, the signal appears to be "shorted" to ground. This means that the previous stage would be operating into a short-circuited load, a condition that cannot be allowed.

One way to get around this problem of very low input impedance is to use a series limiting resistor between the previous stage and the amplifier, as shown here. The previous stage looks into the resistance of the series input resistor; thus the current is limited, and a short circuit input condition is avoided. This problem can be avoided in the true op-amp by having two inputs, one being used for the signal, and the other for the feedback.)



Deriving negative feedback for an amplifier using a feedback resistor in parallel with the load causes the system to appear to have low input and output impedance.

Placing the feedback resistance in series with the load makes the output appear like a constant current source and thus exhibit high output impedance.



Distortion

Distortion is reduced by approximately the same factor as the gain reduction factor. If the gain reduction factor is 100, then the distortion with open loop is reduced by about 100 times when the loop is closed. An op-amp with 10 percent distortion at a gain of 100,000 open loop would approach about 1/100 of 1 percent distortion at a closed-loop gain of 100. (Actually, because of other limiting factors, it is not possible to achieve the full reduction in distortion, but it can be approached.)

Again, the gain reduction factor is the key to improvement. Negative feedback is only effective when you can use a large gain reduction factor, which in turn implies that you had better start off with an amplifier with a high open-loop gain. Because most op-amps have a high open-loop gain this is no problem, but if you entertain thoughts of improving the performance of an existing amplifier by adding (or increasing) inverse feedback, you had better be prepared for a drastic reduction gain. Sometimes this can be offset by adding a preamp stage; sometimes it is simply not practical.

Output impedance

Referring back to Figure 3, notice that the output voltage is sampled by means of a voltage divider. The voltage divider is in parallel with the load, and therefore has the same voltage applied to it as does the load. If it is assumed that a constant input signal is applied to the amplifier, and that the feedback does what it is supposed to do, then the output voltage will also remain constant despite variations in the load. This occurs because as variations in the load cause changes in the output voltage, these changes will be applied to the voltage divider, and the negative voltage fed back into the input of the amplifier will vary accordingly, causing the output to remain constant.

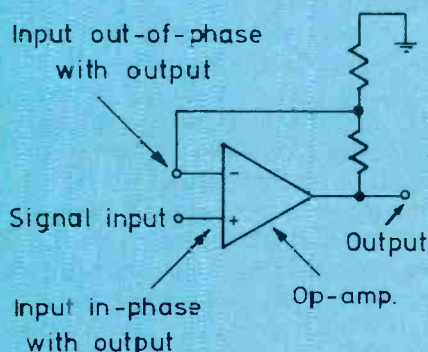
If you sample the output voltage for the inverse feedback, you will cause the output voltage to be a constant-voltage source, and you already have learned that such a constant-voltage source is a very low impedance. Thus, this method of feedback results in a very low output impedance.

What if you do not want a low output impedance? Then you can try the circuit shown here, which samples the *current* through the load. A small resistor is placed in series with the load. The load current also flows through this resistor, causing a voltage drop across the resistor that is proportional to the load current. In this case, the feedback tends to make the load current constant, and you have already learned that a constant-current source is a high impedance. Thus, the output of the amplifier is now a high impedance.

As pointed out earlier, feedback can be used to raise or lower the input and output impedances. It should be pointed out that sometimes it is necessary to use a high-impedance circuit to prevent loading a high-impedance source. At other times, it is necessary to use a low-impedance circuit, to be inserted in series with a low-impedance generator, in order to avoid adding impedance and upsetting the operation of the series circuit. In instrumentation there is good use for these high and low impedance amplifier circuits.

The op-amp

An op-amp is nothing but a high-gain amplifier with two inputs out of phase with each other, and a single output. This is accomplished by using a differential amplifier as the input stage. A differential amplifier has high *common mode rejection*, which makes it immune to power supply variations and power supply ripple. Now add to that the advantage of having two inputs, one for the signal, and the other for the negative feedback, and you have a versatile amplifier. By adding a few resistors as shown, you have a practical amplifier for less than a dollar and that circuit is stable, has good common mode rejection, low distortion, with any input or output impedance you desire, and any gain you desire.



An op-amp is a low cost versatile amplifier with the advantage that the input and the feedback may be isolated from one another.

Until now it has only been mentioned that you can make the frequency response of the feedback amplifier flat over a wide range (good frequency response). By putting a reactive element, such as a capacitor or inductor in the feedback network, however, the feedback loop becomes frequency sensitive and you can make a highpass, or low-pass circuit (active filter circuit). You can also combine these to form band pass and band reject filters. This emphasizes why the op-amp is considered a *universal building block* for modern electronics. Just remember, the op-amp by itself is virtually useless, only when you add the negative feedback loop does the op-amp become useful. It is the concept of negative feedback that makes the op-amp so universal.

ES&T

Four New Simpson DMMs! Made in the U.S.A.

FOR THE MAN ON THE JOB . . .

These professional-grade Simpson test instruments each feature full measurement capability plus continuity beeper, diode test, wide temperature/humidity operating ranges, transient protection, double fusing systems, UL Recognized test leads and a full line of optional accessories.

The **470TM** is our low-cost, full-function 3½-digit hand-held DMM with 25 ranges, 0.15% basic DC accuracy, thumbwheel knobs and a two-way foldout stand. The **474TM** 4½-digit DMM features phenomenal 0.03% basic DC accuracy; 10 µV, .01 Ω and .1 µA resolution, audible/visual continuity indicator.

The **467E** hand-portable 3½-digit DMM has 0.1% basic accuracy, peak hold, true rms and 750 volt overload capability on resistance ranges. The **360 Series 3** 3½-digit digital VOM (with world famous 260® styling) has 0.1% basic accuracy, 28 ranges, a bright 0.56" LED display and rechargeable batteries.

These new DMMs will soon join the family of 30 other UL Listed Simpson test instruments . . . available from leading electrical/electronic distributors worldwide.



SIMPSON ELECTRIC COMPANY

A Kay Industries, Inc. Subsidiary

853 Dundee Avenue, Elgin, IL 60120

(312) 697-2260 • Telex 72-2416 • Cable SIMELCO



Circle (31) on Reply Card

Part 2

Using linear ICs

By Joseph J. Carr, CET

The first installment of this 2-part series discussed how to set the gain of inverting- and non-inverting-follower op-amp configurations. It also covered how to deal with dc offset voltages as well as how to provide frequency compensation. This installment will cover differential amplifiers and ac coupling.

Differential amplifiers

A differential amplifier produces an output voltage that is proportional to the *difference* between two input voltages, shown as V1 and V2 in Figure 1. An operational amplifier, which has inverting and non-inverting inputs, is inherently a differential amplifier. The output voltage will be $A_{vd}(V_1 - V_2)$, where A_{vd} is the differential voltage gain.

An implication of the differential amplifier is that applying equal voltages to the two inputs will cause zero output voltage. In other words, if $V_1 = V_2$, then the quantity $(V_1 - V_2)$ is zero. This characteristic of differential amplifiers is used to suppress interference

signals. Electrical interference of 60Hz, for example, will be picked up by both input lines equally, so the net effect is zero 60Hz output signal. If the desired signal is differential in nature, then it will be amplified, while the interfering signal, which is applied equally to both inputs, is suppressed. A signal that affects both inputs equally is known as a *common-mode* signal, and is assigned the symbol V_{cm} in Figure 1. Because this common-mode signal is not amplified and does not appear at the output, it is said to be *rejected*.

The simplest form of op-amp dc differential amplifier is shown in Figure 2. This circuit uses a single operational amplifier device. The gain of this circuit is given by either R_3/R_1 , or by R_4/R_2 , provided that $R_1 = R_2$ and $R_3 = R_4$. The equality of those resistors, incidentally, is essential to ensure that the common-mode signal is rejected. The degree to which the circuit is successful in rejecting common-mode signals is measured by a quantity called the common-

mode rejection ratio (CMRR). This value is determined by dividing the voltage gain of the amplifier for differential signals by its voltage gain for common-mode signals. $CMRR = A_{vdiff}/A_{vcomm}$. The higher the figure the better the rejection.

Both the practical gain and the input impedance of Figure 2 are limited for the same reasons as apply to the inverting follower circuit (A detailed explanation of this was presented in Part I, **ES&T**, November 1983). The solution to the problem is the instrumentation amplifier (IA) circuit of Figure 3. This circuit uses three operational amplifiers. Amplifier A3 is in the standard dc differential amplifier configuration per Figure 2. Amplifiers A1 and A2 are connected in the non-inverting follower configuration in order to take advantage of the extremely high input impedance. The differential voltage gain of Figure 3 is given by the product of the gains of A3 and the pair A1/A2:

$$A_{vd} = [(2R_2/R_1) + 1][R_6/R_4]$$

Figure 1. A differential amplifier produces an output voltage proportional to the difference between the two input voltages.

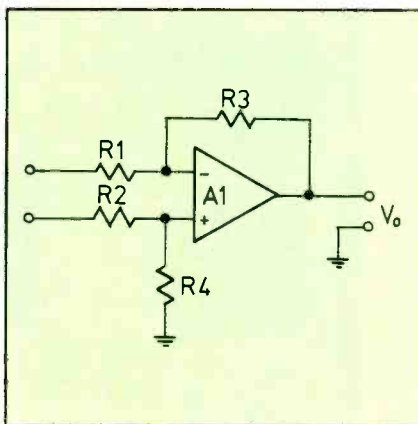
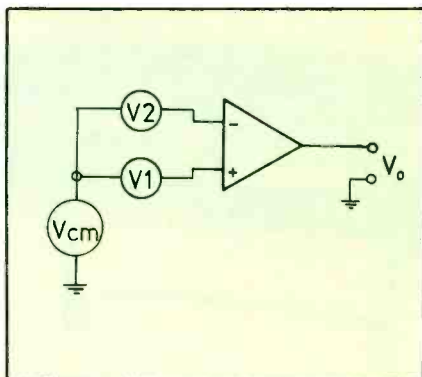
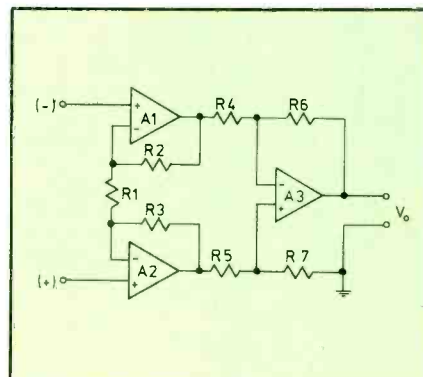


Figure 2. Simple differential amplifier is based on a single operational amplifier.

Figure 3. Instrumentation amplifier based on three op-amps overcomes gain and impedance limitations of single op-amp differential amplifier.



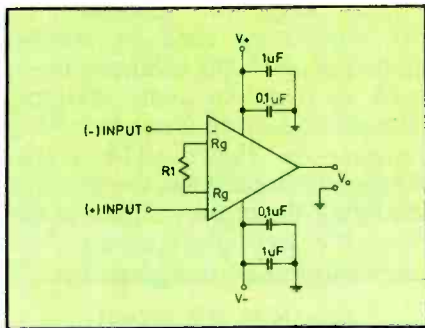


Figure 4. An ICIA contains almost all IA circuitry in a single IC package.

Figure 5. ICIA's can be obtained with a number of desired gains. This device is available with gains of 10, 100 and 500.

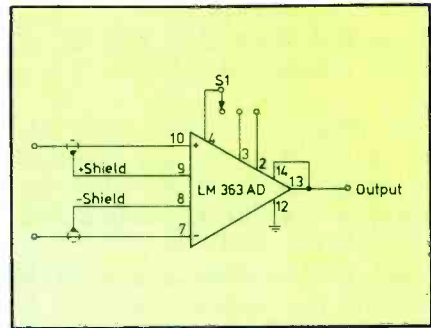
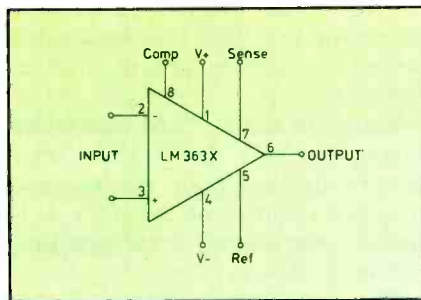


Figure 6. This ICIA has switch selectable gains of 10, 100 and 1000.

provided that $R_2 = R_3$, $R_4 = R_5$ and $R_6 = R_7$. The common mode rejection ratio depends on resistor equality. In some cases, R_7 in Figure 3 (or R_4 in Figure 2) is replaced with a potentiometer or a series combination of a fixed resistor and a potentiometer. These arrangements permit adjustment of the CMRR to optimize the circuit. Adjustment is as follows:

1. Short the two inputs together and connect the junction to the output of a 1kHz signal generator that produces 1V of output.
2. Monitor V_o on an ac-coupled oscilloscope or ac voltmeter.
3. Adjust R_7 for minimum output signal. Use successively more sensitive input positions on the instrument until no further improvement is possible.

For ordinary application, the resistors used can be 5 percent types, but for precise applications, 1 percent or better is required.

Resistor R_1 is sometimes used for gain control. It is common practice to replace R_1 with a series combination of a fixed resistor and a potentiometer. The fixed resistor is used to limit the maximum gain. If R_1 goes to zero, then the gain goes to maximum.

Figure 4 shows a new form of instrumentation amplifier—the *integrated circuit instrumentation amplifier of ICIA*. Such an IC contains all of the circuitry of Figure 3, except R_1 . Resistor R_1 is mounted externally, and is used to set the gain of the device. In almost all cases, the gain will be given by an equation of the form $(K/R_1 + 1)$, where "K" is a con-

stant. The Burr-Brown INA-101, for example, provides a gain of

$$A_{vd} = (40/R_1) + 1$$

where A_{vd} is the differential voltage gain, and R_1 is expressed in Kilohms. The ICIA device provides a high input impedance and gains of greater than 1000 in a small IC package.

Another form of ICIA is shown in Figure 5. This device is the National Semiconductor LM-363-X. The metal-can IC provides fixed gains of 10, or 100 or 500 depending on the specific model. The gain is given in the part number: LM-363-10 provides 10, LM-363-100 provides 100 and LM-363-500 provides 500. These devices provide all of the advantages of an IA, at popular gains, in a small metal IC can.

The LM-363 is also available in a 16-pin DIP (dual-inline package) version that permits three switch-selectable differential voltage gains: 10, 100 and 1000. Figure 6 shows the LM-363AD with a switch used to select one of the three possible gains. When all three pins are open, the gain is 10. A gain of 100 is set by shorting pins 3 and 4, while a gain of 1000 is set by shorting pins 2 & 4.

The LM363AD has an interesting feature that makes it useful for many low-signal-level applications, including biomedical applications: guard-shield connections. By summing the two input signals, and applying the result to the shields of the input wiring, you can cancel problems due to differences in input capacitances. Such problems can severely affect low-level signals by causing certain common-mode signals (for example,

60Hz hum) to become differential signals. The use of the +SHIELD and -SHIELD terminals, as shown in Figure 6 overcomes this problem.

AC Coupling

The basic operational amplifier is a dc differential amplifier. This means that the amplifier will amplify signals from dc to some upper frequency limit (usually a few kilohertz to dozens of kilohertz). There are times, however, when ac coupling is needed. In the biopotentials amplifiers used in medical electronics, the signal (for example, an electrocardiogram, or ECG) may contain frequency components near dc, while at the same time producing a dc offset voltage. That dc potential, which is caused by the contact potential resulting from connecting a metal electrode to human skin, can be 2000 times larger than the peak signal amplitude. Obviously, ac coupling is needed to block that dc offset potential. For an ECG amplifier, the appropriate frequency response is 0.05Hz to 100Hz.

Figure 7 shows a method for ac coupling the instrumentation amplifier. In this case, identical capacitors are connected in series with each input. Because the bias currents normally existing on operational amplifiers will tend to charge the capacitors (thereby blocking the amplifier), we must find a way to keep them discharged. This function is accomplished by resistors R_1 and R_2 . The lower end -3dB point in the frequency response curve of these RC circuits is given by:

$$F = 1/2\pi RC$$

where

F = frequency in hertz

R = resistance of R1 and R2

C = value of C1 and C2.

Normally, you will know the minimum frequency and will select a value for R from input impedance and other practical considerations (10MΩ is a common choice). You will thus want to rewrite the equation as below to find C for a fixed R and selected F:

$$C = 1/2\pi FR$$

Example

Select capacitor values for C1 and C2 in Figure 7 for an ECG or EEG (electroencephalogram) amplifier with a frequency response of 0.05Hz to 100Hz.

$$C = 1/2(3.14)(0.05\text{Hz})(10^7\Omega)$$

$$C = 1/3.14 \times 10^6$$

$$C = 0.32\mu\text{F}$$

The next larger standard capacitor is 0.33μF, so that value would be used in practical situations.

Some modern instrumentation amplifiers have field effect transistors in the input stages, and may not require the resistors. It is usually considered good practice, however, to use them.

The amplifier in Figure 7 also has output ac coupling. This is rare, but is used in some cases. The purpose of R3 is 2-fold. First, it keeps dc offsets from charging C3, and second, it provides a load for the operational amplifier.

Figure 8 shows transformer-

coupling to the input of an operational amplifier. Transformers are sometimes used to receive signals from 600Ω balanced lines, such as found in audio systems. The connection to a non-inverting follower is shown. The transformer turns ratio has the effect of changing the *apparent* gain of the stage. For example, the gain of the circuit in Figure 8 is given by:

$$A_v = [N_s N_p] / (R_2 / R_1 + 1)$$

Be careful when selecting transformer T1. A high turns ratio will place too high a signal level on the operational amplifier input and can saturate the amplifier.

The audio characteristics of the transformer are also important. Both frequency response and phase-shift problems can occur, and the cures are costly.

You can drive a 600Ω balanced audio line with either a special output transformer or a circuit such as shown in Figure 9. Again, cost forces the use of the operational amplifier where transformers would otherwise be used. The circuit in Figure 9 uses two operational amplifiers, both of which are in the inverting follower configuration. These amplifiers are connected in cascade, so their respective output signals are 180 degrees out of phase. At normal audio frequencies, the phase delay at the output of A2 does not pose any great problem.

Troubleshooting op-amp circuits

Operational and IC instrumentation amplifiers have been appearing in a wide range of equipment from consumer electronics to high-priced medical/scientific instrumentation. Even in supposedly computerized instruments, there is inevitably an analog subsection at the front-end. The analog circuitry generally contains either an op-amp or an IA. Technicians in most areas of electronic servicing will at least occasionally encounter linear IC amplifiers of one sort or another.

There are several defects that can be attributed to any linear IC amplifier: It won't pass signal; it passes an attenuated or erroneous signal; it passes too much signal; and it produces a noisy output. These are the same defects that might be expected with any linear

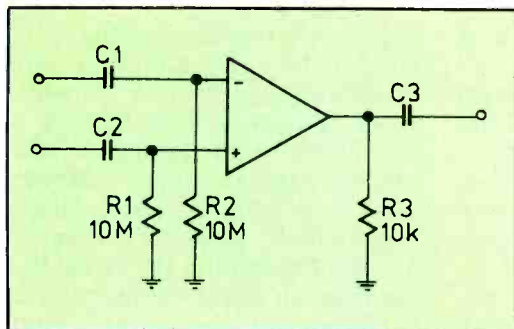


Figure 7. AC coupling blocks the dc potential input to an ECG amplifier by the human skin, which may be as high as 2000 times the peak signal amplitude.

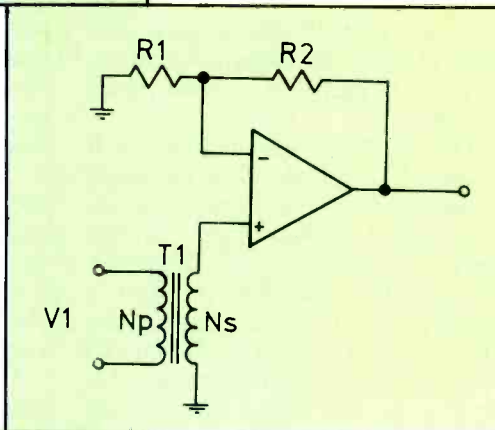


Figure 8. Transformer coupling allows op-amp to be connected to 600Ω balanced line.

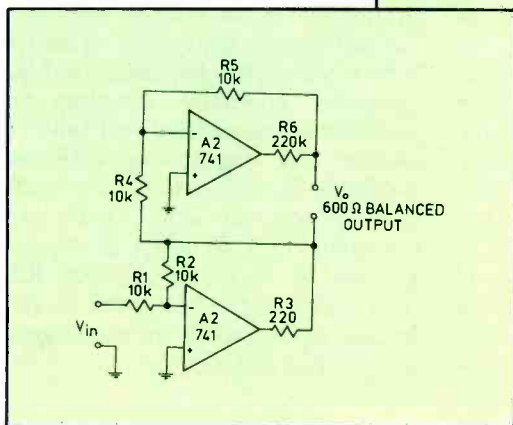


Figure 9. Another method of connecting an op-amp to a 600Ω balanced line is with a circuit such as this.

amplifier, regardless of whether or not ICs are used.

Once a defect is isolated to a particular stage by normal signal tracing methods, the next logical step will be checking the dc voltages. In most cases, there will be V+ and V- power supply voltages; typically +4.5Vdc to +18Vdc. These voltages must be present. If one is missing (or extremely low), the result will be a high output-offset potential of the opposite polarity. For example, if the V-power supply voltage is missing, then the output terminal will be at a potential close to V+. Similarly, if the V+ is missing, the output terminal will be at a voltage close to V-.

Whenever the op-amp (and most IAs) fail to produce a proper output, the principal question is whether the input terminals are capable of controlling the output signal. For most circuits, the main test will be to set the input potential to zero and observe whether the output voltage goes to zero.

You can do this by shorting the (+) and (-) inputs together. If the operational amplifier is working properly, and if both V+ and V- power supply potentials are normal, then shorting the input terminals together should make $V_o = 0$. If not, then you can assume that the device is bad.

Be careful when using the above dc troubleshooting protocol, however. First, you must evaluate the circuit to determine that no harm will result from shorting the input pins together. Of particular interest are preceding outputs that may not tolerate grounding, and succeeding cascade circuits (for example, certain power transistor circuits) that require some normal dc offset to remain in control. Second, be certain that you are dealing with either an operational amplifier or an IA. There are some special purpose IC linear amplifiers that are neither op-amps nor IA. Some of those will not tolerate input shorts. Also a caution, but

one that should not need mention, is that you should be *sure* that it is the input pins that are being shorted together. Shorting other combinations can result in destruction of the IC.

Noise can be a particularly difficult troubleshooting problem. Only in a few cases will noise within the IC produce changes in the dc potentials on the pins. Sometimes, noise within the device will produce output offset voltage shifts (which can be viewed on an oscilloscope), but the noise problem often is transparent with respect to the dc terminal voltages.

Fortunately, most causes of internal noise in any linear IC are sensitive to temperature changes. The use of both freeze mist spray and heat can work wonders in locating the defective IC. Although linear IC devices provide immense amounts of circuitry in a small space, they hold only a few surprises for the skilled troubleshooter.

ES&T

TECHNICIANS USE PRIMEFAX BECAUSE IT WORKS.



Primefax • the computer-assisted television repair system.

Now, more than a year of field experience is proof that Primefax works. And with this experience, the Primefax system has been improved. • The Primefax data base has doubled. • A printed copy of failure histories puts the information where you need it. • Use the Primefax computer terminal or use your own. • The Primefax system has been tested by major national television manufacturer repair services.

Primefax... a management tool
for productivity... the only way
to increase profits today.

Primefax

In Texas, (512) 344-5999 • Elsewhere, 1-800-531-5953
4825 Fredericksburg Road • San Antonio, TX 78229

TECHNICIANS & SERVICEMEN
COMPONENTS FOR YOUR MAINTENANCE & REPAIR WORK
SPECIAL: OUR LOW LOW PRICES
REPLACEMENT FOR ECG® TYPES

| TYPE NO. | YOUR COST | TYPE NO. | YOUR COST |
|----------|---------------|----------|---------------|
| 85 | FOUR for .99 | 125 | SEVEN for .99 |
| 102A | THREE for .99 | 159AP | FOUR for .99 |
| 123A | FIVE for .99 | 177 | EIGHT for .99 |
| 123AP | SIX for .99 | 199 | FIVE for .99 |

SUPER SPECIAL (MIN. 5 PC. EACH)

| TYPE NO. | YOUR COST | TYPE NO. | YOUR COST | TYPE NO. | YOUR COST |
|----------|-----------|----------|-----------|----------|-----------|
| 124 | .85 | 165 | 2.25 | 375 | .90 |
| 128 | .45 | 171 | .65 | 506 | .55 |
| 129 | .45 | 184 | .45 | 500A | 8.95 |
| 130 | .80 | 185 | .45 | 523 | 9.95 |
| 152 | .40 | 238 | 2.25 | 526A | 10.20 |
| 153 | .40 | 276 | 6.95 | 529 | 13.75 |
| 154 | .60 | 291 | .95 | 712 | 1.25 |

JAPANESE TYPES (MIN. 5 PC. EACH)

| TYPE NO. | YOUR COST | TYPE NO. | YOUR COST | TYPE NO. | YOUR COST |
|----------|-----------|----------|-----------|----------|-----------|
| 2SC867A | 2.75 | HA1366W | 1.85 | STK0029 | 3.80 |
| 2SC1114 | 3.25 | HA1377A | 2.90 | STK0080 | 9.99 |
| 2SC1308K | 1.95 | LA4102 | 1.25 | TA7205AP | 1.50 |
| AN214Q | 1.45 | M51515BL | 2.95 | TA7208P | 1.85 |
| AN239A | 4.60 | STK433 | 3.95 | TA7222AP | 1.95 |
| BA532 | 1.80 | STK435 | 3.95 | UPC1181H | 1.25 |
| GH3F | .89 | STK437 | 6.25 | UPC1182H | 1.25 |
| HA1342A | 2.30 | STK439 | 6.50 | UPC1185H | 2.99 |

COD ORDERS WELCOME (\$25 MIN. ORDER)
For Complete Component Catalog Call or Write
DIGITRON ELECTRONIC
110 HILLSIDE AVENUE, SPRINGFIELD, N.J. 07081
Toll Free: 800-526-4928 In NJ: 201-379-9016
*ECG IS A TRADE MARK OF PHILIPS ECG.
DIGITRON ELECTRONIC IS NOT ASSOCIATED IN ANY WAY WITH PHILIPS ECG.

Circle (16) on Reply Card

Circle (17) on Reply Card

Readers' Exchange

For sale: B&K model 1077B TV analyst, \$395; B&K model 2040 CB signal generator and B&K model 1040 CB service master, \$299 for both. All equipment with leads and factory operation manual, schematics and parts lists. *Goetsch Electronic Servicing, 12698 Shorewood Drive S.W., Seattle, WA 98146; 206-241-0507.*

For sale: Model 460 Eico scope, barely used, with probes, \$130 plus freight. *R. Faircloth, 7801 S.W. 129th Terrace, Miami, FL 33156; 305-251-2856.*

Needed: Schematic and manual for Knight R-100A receiver. *Leroy F. Jones, 1600 W. 3rd, Lee's Summit, MO 64063.*

For sale: B&K 1076 TV analyst with book and cables, \$200; B&K 415 sweep marker generator for TV/FM with book and cables, \$300; Beltron I CRT restorer/rejuvenator with extra adapters, books, etc., \$200. *John Ryssio, 1057 Big Pine Drive, Santa Maria, CA 93454; 805-925-8773.*

Wanted: VA48 analyzer, including cables and manual. Will pay \$625 C.O.D. if in excellent condition. *Walt Sattler, 512 S. Lynch, Flint, MI 48503; 313-238-3538.*

For sale: B&K model 470 picture tube tester with adapters, \$200; Tektronix model 281 dual trace oscilloscope, \$800; Astar desoldering station model DS707, \$200. *W. A. Frederickson, 3103 W. 12th Ave. Court, Broomfield, CO 80020.*

Needed: Cassette motor and pulley for an Audiotronics cassette player/recorder model 148B, or manufacturer's address. *Ray Welborn, Welborn Radio & TV Service, 522 Ellisville Blvd., Laurel, MS 39440.*

Needed: Sears technical manual/schematic for model 800.20210400 AM/FM clock radio. Will buy or copy and return. *Charles E. Norris, TV-Radio Service, Box 105, Airedale Road, Ridge, MD 20680.*

Needed: Service manual for Spectro Acoustics Amp model 200 SR. Will pay expenses or reasonable cost. *Mr. Dujoric, 661 W. 180th St., New York, NY 10033.*

Needed: Schematics for Lectrotech Inc. vectorscope, model V-7; and Sanyo color television, model 90C33U. Will pay expenses or reasonable cost. *Leslie O. Robensin, 4662 Esther St., San Diego, CA 92115.*

For sale: Howard W. Sams Photofacts 1-1000, including two file cabinets, \$900. *Carl Cowan, 566 Rife St., Chambersburg, PA 17201; 717-264-2043.*

Needed: Self-study courses, books, projects, etc. Must be complete and in good condition. Please send full details in first letter. *Ewing A. Allmon, P.O. Box 2421, Lawton, OK 73501.*

For sale: 1072 new radio-TV tubes, all types and hard-to-find. SASE for list. Complete lot, \$600 prepaid. *F. Keylor, 821 Court St., Auburn, ME 04210.*

For sale: Sencore CB 41 and CB 42 test equipment, like-new condition, including all leads and manuals, \$525 plus UPS. *Martin Major, 15810 Sapwood St., Tampa, FL 33624.*

For sale: TV and stereo test equipment and service data; B&K 1077B analyst, \$230; Sylvania CK 3030 color jig with 40 "D" adapters, \$350; send SASE for list. *John D. Badovinac, 6394 Elmhurst Drive, San Diego, CA 92120; 619-582-1820.*

For sale: Heath IT5235 yoke/flyback tester with H.V. probe and all manuals, excellent condition, \$75; Heath IM5218 V.T.V.M. in excellent condition, \$50; Hitachi V-209 portable dual trace 20MHz scope. Like new with probes and tech and operating manuals, \$600. *Neil Sherwood, 2352 Danby Road, Willseyville, NY 13864; 607-256-4951.*

Needed: New or good used 370AUB22, also Philco IC E.C.G. 782. *Jerome Rosenblatt, 2063 E. 56th St., Brooklyn, NY 11234.*

Needed: Schematic for a Code-a-phone, Diplomat-2, serial number 001912. KWF Industries, Portland, OR. *Daniel E. Barlow Sr., 3327 La Junta Ave., San Diego, CA 92117.*

Needed: Schematic for stereo receiver Sansui model G-4500. *Jesús Rivera, Muñoz Rivera #49, Barranquitas, Puerto Rico 00618.*

For sale: B&K sweep marker generator model 415; B&K TV analyst model 1077-B. Both used only once, new condition. Make offer. *William J. Maida, 341 Isabella Drive, Longwood, FL 32750.*

For sale: Hewlett Packard oscillator 200CD and 202C, \$35 each; Hewlett Packard function generator 202A, \$39; Esterline Angus Speed Servo chart recorder, \$42. *Frederick Jones, 407 Morningbird Court, Niceville, FL 32578.*

For sale: B&K scope model 1461, 10MHz, solid state, triggered sweep, like new with manual and extra new probe, \$225 includes UPS prepaid; Dage CM-6 digital capacitor meter with manual, \$45. *Robert L. Soyars, 711 W. Walnut St., Johnson City, TN 37601; 615-928-8224.*

For sale: Lampkin 107C communications service monitor, excellent condition. Best offer. *John Sannino, 62 Holly Hills Drive, Somers Point, NJ 08244.*

For sale: B&K 415 sweep marker generator with all probes and books, never used, \$107.50; used Cal-Rad autotransformer, 0-130V output, 115V, 5amp input. *Peter Daley, Daley's TV & Communications, 305 North St., Rt. 2, Box 34, Preston, MN 55965; 507-765-2572.*

For sale: Test equipment, latest from Sencore. Like new condition, retiring from business. *Dells, 192 Magothy Beach Road, Pasadena, MD 21122.*

Needed: Construction manual for Electronics Measurements Corporation model 801 resistance capacitance bridge and in circuit capacitance checker. Will pay \$5 for manual. *Max Emerson, 1923 N. Texas, Weslaco, TX 78596; 512-968-3913.*

For sale: Sencore FC51 frequency counter with WBA 52, like new, \$650. *Steve Hamilton, 3746 S. Peoria, Tulsa, OK 74105.*

For sale: Sencore FE20 F.E.T. multimeter (portable); Sencore FE160 F.E.T. multimeter (bench type); or Sencore FS134 fieldstrength meter, \$50 each. *Ken Stoll, 119 1/2 W. Pacific, Branson, MO 65616; 417-334-0027.*

Needed: Schematic, service manual and operating instructions for Bliley electric crystal controlled oscillator model IA. Will buy or copy and return. *Robert J. Blackwell, 2925 Riggs Ave., Baltimore, MD 21216; 212-362-6678.*

For sale: R.C.A. Junior volt Ohmyst manual and probes, \$25; Eico sine and square generator model 377 and manual, \$25; Panasonic FM stereo pack model CV951VA, \$10. *Al Crispo, 3225 Chipmunk Drive, New Port Richey, FL 33552.*

For sale: Sencore VA48 model TV-VTR-MATV and video analyzer, one year old, \$1000; Sencore SC61 waveform analyzer, used four months, \$2400. *Beals TV Repair, Rt. 1, Box 43, Mason, IL 62443; 618-483-5295.*

Needed: Schematic for Sears model 132.91931800 AM/FM radio-phono and tape player. Will buy or send copy and I will pay for copy plus postage. *M. W. Smith, 400 Brandon Road, Richmond, VA 23224.*

Needed: Schematic or address for ECG med-scope model CS-25 made by Burdick Corporation, Milton, WI. *Patrick Wells C.E.T., 449 S. Canyon Drive, Redmond, OR 97756.*

Needed: Service manual and schematic for Pilot AM/FM stereo receiver model 5000. Will buy or copy and return. *Jerome Kennedy, 4217 S. 16th Road, Arlington, VA 22204.*

Wanted: Any early radio-TV literature or ads, etc. by high school student making study of radio. Originals or copies appreciated. *D. Mark Maurer, 2352 Grace Ave., Lebanon, PA 17042.*

For sale: B&K capacitor checker, \$75; Eico flyback/yoke tester, \$50. *Stan Hayman, 19707 Turnberry Way, Miami Beach, FL 33180; 305-944-5674.*

Needed: Owner's manual for a Conar model 250 scope. *Joseph Farkas, 283 Avenue B, Palmerton, PA 18071; 215-826-2698.*

Needed: Service manual for Pioneer AM/FM tuner amplifier combination, model SX-600T. Will copy and return. *John L. Wingfield, P.O. Box 685, Cedaredge, CO 81413; 303-856-6341.*

For sale: Sencore VA-48 analyzer, excellent condition, \$800; Sencore CG 169 deluxe color generator, \$60; Heathkit sweep generator 1G-5257, \$60; 170 Sams 793-1931; \$150. *Henry Price, 640 Cambrian Court, Sacramento, CA 95825; 916-481-2418.*

Needed: Heath model SM-2420, or SM-4130 frequency counter or similar model, EMC model 802 signal tracer/generator. *Caswell Davis Jr., 601 Delmar, Apt. 2, San Antonio, TX 78210; 512-532-9378.*

For sale: Dentron model MLH-2500 linear amplifier, \$475; Kenwood model TR-9000 2-meter FM all mode transceiver, \$300; Kenwood model PS-20 regulator power supply, 4.5A, \$50. *William D. Shertchuk, One Lois Ave., Clifton, NJ 07014; 201-471-8798.*

The Smarter Thinking Cap™



Now — a smarter way to measure capacitance!

Global Specialties' New

3002 AUTORANGING CAPACITANCE METER

Use the Thinking Cap™ to determine true capacitance in cable, switches, components, hardware and naturally, capacitors. From 1 pF to 19,990 μ F, the 3002 provides highly accurate, uncomplicated capacitance measurement. In the lab or in the field... for quality control, production, inspection, design, or systems installations... You can rely on the Thinking Cap™. And THINK about this — at only \$210 the 3002 is a SMART buy! Grab the telephone and call us TOLL FREE to find out how to get your Thinking Cap™ today!

- Handheld, battery-operated
- Measures capacitance from 1 pF to 19,990 μ F
- 8 automatically selected ranges
- Typical 0.2% accuracy
- 3½ digit, 0.5 inch LCD display
- LED range indicators

SPECIFICATIONS

| | |
|-----------------------------|---|
| Ranges: | 8 automatically selected ranges from 1999 pF to 19.99 mF (full scale) |
| Resolution: | 1 pF in lowest range, 0.05% of full scale on all other ranges |
| Accuracy: | 0.2% of reading \pm 1 count \pm 1 pF from 1 pF to 199.9 μ F; 1.0% of reading \pm 1 count from 200.0 μ F to 19.99 mF |
| Display: | 3½ digit, 0.5 inch LCD, low battery (LOBAT), over compensation indication (—), and 4 LEDs to indicate pF, nF, μ F, and mF |
| Reading UpDate Time: | 350 ms to 19.99 μ F, 200 ms to 1.25 s from 20 μ F to 20 mF |
| Controls: | POWER (ON/OFF) switch, ZERO calibration adjustment to null out stray capacitance up to 100 pF |
| Test Technique: | Measures $\Delta T/\Delta V$ (Dual Threshold slope integration) |
| Power: | 6 AA Alkaline or Nicad batteries or optional AC Adapter/Charger, 16 hours continuous use |
| Dimensions: | (LxWxH) 7.6x3.75x1.72 inches (193x95x44mm) |
| Weight: | 12 oz. (340 grams) without batteries |



GLOBAL SPECIALTIES CORPORATION

70 Fulton Terr., New Haven, CT 06509 (203) 624-3103 TWX 710-465-1227

OTHER OFFICES:

San Francisco (415) 648-0611, TWX 910-372-7992,

Europe: Phone Saffron-Walden 0799-21682, TLX 851-817477

Call toll free for details 1-800-243-6077 during business hours

Circle (21) on Reply Card

More about π in electronics equations

By Sam Wilson, ISCET test director

In his book, *The History of π* , author Petr Beckmann traces the development of the mathematical concepts of π from 2000 B.C. up to recent times. He shows that the development of mathematics coincides closely with the accuracy to which π can be stated.

In the earliest days, the value of π was given as being about $3\frac{1}{4}$. Great mathematicians later calculated π with greater accuracy. You should know that π is an irrational number, meaning that it can never be expressed as a ratio of two integers. Other examples of irrational numbers are the square root of 2 and epsilon.

The book leaves off at a point where the value of π had been calculated to 500,000 decimal places. However, since the book was written, a Japanese computer expert has calculated the value to 4 million places. It's hard to imagine that in 4 million places the number never comes out even, and worse yet, there is no pattern of repetition for the numbers in the decimal places.

The area of a circle is calculated by the equation:

$$A = \pi r^2$$

where

A = area

r = radius of the circle

It follows that the area can never be known exactly because the value of π is not known exactly. You could use the value of π to 4 million decimal places, and that would certainly satisfy most people, but there is always another decimal to follow and one more after that, and after that, etc.

People who study irrational numbers for the first time are sometimes put off by the fact that the values don't come out exactly even. This is especially true in electronics because π is used in so many equations. However, keep in mind that values of equations with π can be *calculated* more precisely than they can be *measured* with present day equipment. For example, there would be little use in calculating the inductive reactance of a circuit using π to 4 million decimal places because we have no equipment that could measure it to that accuracy.

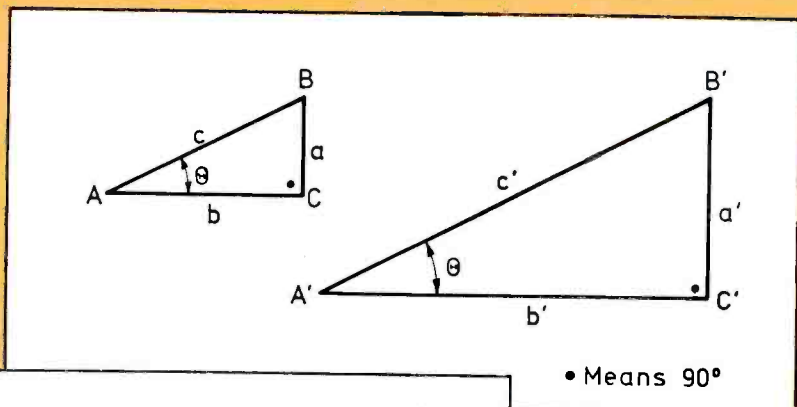


Figure 1

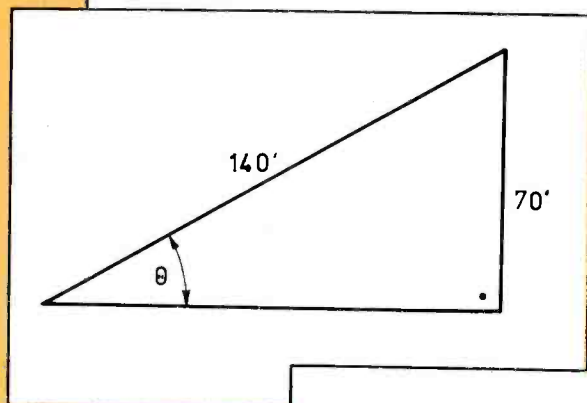


Figure 2

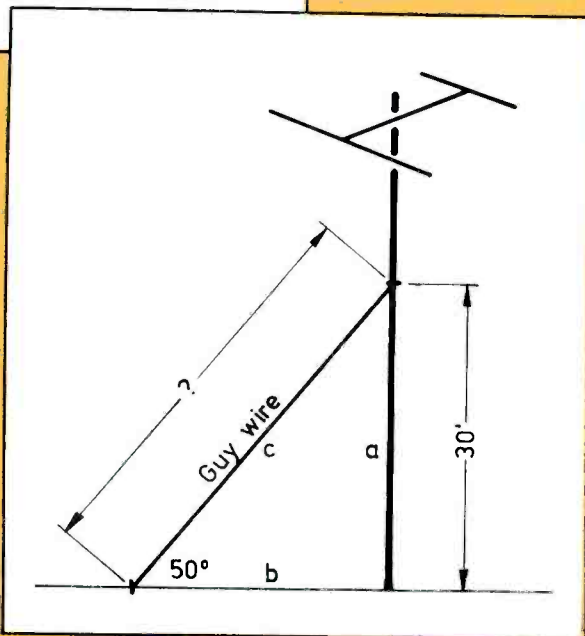


Figure 3

Microcourse in trigonometry

I believe that mathematical concepts are best introduced when they are *needed* for solving problems. It is necessary now to define the sine—usually written \sin —of an angle before proceeding with the understanding of how π gets into so many electronic equations.

Figure 1 shows two right triangles that are defined as being *similar*. (A right triangle is one that has a "right" or 90-degree angle as one of its angles.) Similar triangles have identical angles but not necessarily identical lengths of sides. (When the lengths of the sides as well as the angles are identical, then the triangles are said to be *congruent*.)

When triangles are similar, the ratios of the sides are constant and equal. Of specific interest in Figure 1, a/c is defined as the ratio of those two sides. Because the triangles are similar:

$$a/c = a'/c'$$

In fact, no matter how many different sizes of right triangles you draw with the angles being equal, the ratio of sides marked a/c would be the same. That is an important point to remember because that ratio— a/c —is called the *sine* of angle Θ (the Greek letter, theta).

Equation 1. $\sin \Theta = a/c$

In the early days of mathematics, you could consult a table to

find the sine of an angle. In such a table, you would find, for example, the $\sin 30^\circ = 0.5$. That is not surprising because in a right triangle the side opposite the 30° angle is always equal to one-half the hypotenuse. (The hypotenuse is the longest side of the right triangle, the side opposite the right angle.) The ratio of the side opposite the 30° angle to the hypotenuse is 0.5 in a right triangle that has an angle (Θ) of 30° .

The table of sines includes the ratios for every possible angle that you would ever want to know. Today, the math tables have been replaced by a scientific calculator. All you have to do is punch in the numbers for the angle, then punch the \sin button. The calculator will tell you the sine of the angle.

If you punch in the number 59 (for 59°), then punch \sin for the sine of that angle, you will find that $\sin 59^\circ = 0.857$ to three decimal places. Your calculator will no doubt carry the value much further. If you divide the side opposite the 59° angle by the hypotenuse you will find that the ratio is $0.857 +$.

Two other forms of Equation 1 are:

Equation 2. $c = a/\sin \Theta$

Equation 3. $a = c \sin \Theta$

Two simple problems will be used to show how the sine of an angle can be used in making calculations.

Sample problem #1

Figure 2 shows a right triangle with an angle Θ . The side opposite Θ is 70-feet long and the hypotenuse is 140-feet long. What is the value of the angle marked Θ ?

Solution

$$\sin \Theta = 70/140 = 0.5$$

What you have shown by working with Equation 1 is that the sine of the angle is 0.5. What you really want to know,

though, is the angle, not the sine of the angle. To obtain the angle, you use the \arcsin , or \sin^{-1} (for inverse \sin) on your calculator (or look up the value in a table). This is sometimes written with the symbol \sin^{-1} .

Equation 4. $\Theta = \sin^{-1} a/b$

In the problem you just worked, you would have to use the equation:

$$\Theta = \sin^{-1} 70/140 = \sin^{-1} 0.5 = 30^\circ$$

New from B&K-PRECISION



Auto/manual ranging DMMs from \$75

Model 2806

- Autoranging on volts and ohms
- Manual ranging on amps
- 0.7% DC accuracy
- 500 hour battery life
- Continuity test beeper
- Diode check
- Transient and overload protected
- High energy fuse

Model 2807 \$115

Manual or autoranging on volts and ohms with 0.5% DC accuracy.

Model 2816 \$150

Same features as 2807 with 0.25% DC accuracy.

For more information contact your
B&K-PRECISION
distributor or write for specifications.

BK PRECISION
DYNASCAN
CORPORATION

6460 West Cortland Street
Chicago, Illinois 60635 • 312/889-9087
International Sales: 6460 W. Cortland St., Chicago, IL 60635
Canadian Sales: Atlas Electronics, Ontario
South and Central American Sales:
Empire Exporters, Plainville, NY 11803

Sample problem #2

The problem just worked shows that you can find the angle if you know two sides in a right triangle. Now look at a second problem using the sine of an angle. Figure 3 shows an antenna that you are mounting on a roof. You wish to have the guy wire mounted at 30 feet, and you want it to make an angle of 50° with the roof. How long should you cut the guy wire? (Do not allow extra length for fastening the guy wire in this problem.)

Solution

Use Equation 2 to find the value of the hypotenuse (the length of the guy wire). You should know the length of "a" is 30 feet. Also, you know the angle of θ is 50° . So, you can write (from Equation 2)

$$c = a/\sin\theta = 30 \text{ feet}/\sin 50^\circ = 30 \text{ feet}/0.766 = 39+ \text{ feet}$$

Now that you have had this microcourse in trigonometry it is possible to return to the problem of why π appears in so many equations.

Equating the voltage at any instant for a pure sine wave

In the last issue of *ES&T*, we showed how a sine wave voltage can be represented by a rotating phasor. In Figure 4 the phasor marked V_m is rotated counter-clockwise to produce the sine wave. The maximum or peak voltage of the sine wave is V_m . Also, the radius of the circle described by the phasor is V_m . Note that θ shows the angle to which the phasor has moved and v shows the value of the projected voltage at any instant. Standard symbols are used here. The capital letters are used for constant values and lower-case letters are used for variable values.

An equation for the voltage at any instant is:

$$\text{Equation 5. } v = V_m \sin\theta$$

Note that this is simply another way of writing Equation 3.

Equation 5 shows a general equation for a sine wave voltage, and a method of calculating that voltage at any instant. However, you are unlikely to know the angle theta in degrees. If theta is expressed in radians, you can write the angle as ωt , or, $2\pi ft$. Remember that ω (omega) is the angular velocity of the phasor. The angle at any time is equal to the angular velocity times the time:

$$\theta = 2\pi ft$$

Substituting ωt in Equation 5, the general equation for a sine wave voltage becomes:

$$v = V_m \sin 2\pi ft \text{ or}$$

$$\text{Equation 6. } v = V_m \sin \omega t$$

The term ωt is actually the angle in radians, and you must use the radian notation on your calculator. If you don't have radians on your calculator, you can always convert degrees into radians or radians into degrees using these basic equations:

$$\begin{aligned} \text{Degrees} &= \text{Radians} \times 57.3 \\ \text{or} \\ \text{Radians} &= \text{Degrees}/57.3 \end{aligned}$$

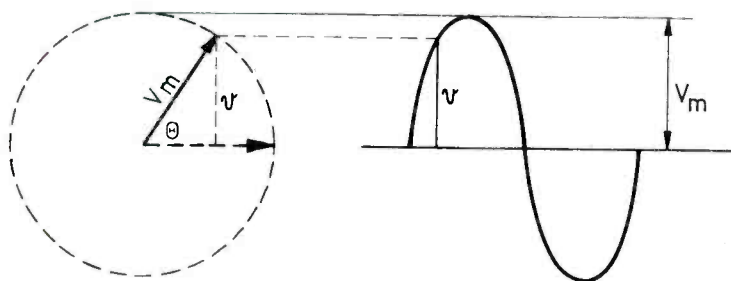


Figure 4

Sample Problem #3

The general equation for a certain sine wave voltage is

$$v = 75 \sin 377t$$

Using this equation calculate the following:

- Maximum (or peak) voltage
- Frequency of the sine wave
- Average value of the sine wave
- rms value of the sine wave

Solution

The maximum value of the sine wave is given by the equation itself.

$$\begin{aligned} v &= V_m \sin 2\pi ft \\ v &= 75 \sin 377t \end{aligned}$$

Look at the original equation, and look at the equation for this problem. You will see that 75 must be the value of V_m because it is the coefficient of the sine of $377t$.

To calculate the frequency, look again at the equations. Note that the value of omega is 377.

$$\omega = 2\pi f = 377$$

Divide both sides of the equation by 2π .

$$\begin{aligned} &377/2\pi \\ \text{so, } f &= 377/2\pi = 60\text{Hz} \end{aligned}$$

You can get a lot of information out of Equation 6. The following example will show a few ways in which the equation will reveal characteristics of a given sine wave.

The average value and the rms values are calculated from the fact that the peak value is known. There are some tricks for getting greater accuracy for these values.

Usually the average value is calculated from the equation:

$$V_{avg} = 0.636V_m$$

If you have a scientific calculator, you can get a more accurate average value by using the equation:

$$V_{avg} = 2/\pi V_m$$

For this problem

$$V_{avg} = 2/\pi \times 75 = 47.746V$$

the usual method of calculating the rms value is to use the equation:

$$V = 0.707 V_m$$

With a scientific calculator, you can get greater accuracy by using the equation:

$$V = V_m/\sqrt{2} \text{ or } V = 1/\sqrt{2} V_m$$

Theory "purists" will object to the radical in the denominator and insist the equation be written:

$$V = (\sqrt{2}/2)V_m$$

For this problem

$$V = V_m/\sqrt{2} = 75/\sqrt{2} = 53.033V$$

FCC LOWERS REQUIREMENTS GET YOUR RADIO TELEPHONE LICENSE

FCC changes make obtaining High-Level Radio Telephone License much easier now. Eliminate unnecessary study, with our short cuts and easy to follow study material. Obtaining the General Radio Telephone License can be a snap! Sample exams, also section covering Radar Endorsement. A small investment for a high-paying career in electronics. \$19.95 ppd. **Spi-Ro Distributors, P.O. Box 1538, Hendersonville, N.C. 28793.**

Circle (20) on Reply Card

Today's Research Brings Tomorrow's Cures

St. Jude Children's Research Hospital is a national resource not just for today, but for tomorrow. Children come to St. Jude to receive the best available care, whether for leukemia, other childhood cancers, or one of the rare childhood diseases being studied here.

Please send your tax-deductible check or request for information to St. Jude, 505 N. Parkway, Box 3704, Memphis, TN 38103.



Danny Thomas, Founder
**ST. JUDE CHILDREN'S
RESEARCH HOSPITAL**

DANDY-DAPTER

**NOW YOU CAN USE YOUR CRT/RESTORER/
REJUVINATOR/CLEANER ON ANY COLOR CRT
YOU DO NOT NEED TO BUY A NEW CRT TESTER.
SAVE HUNDREDS OF DOLLARS
"THIS IS THE ONLY ADAPTER YOU WILL NEED"
— USE ON NEW IN-LINE & ONE-GUN TUBES —**

If your tester is the CLEANER/RESTORER type or the REJUVINATE type, you can use the function on your present machine on any Color Tube listed from a 9" to a 26," including foreign types. Checks Quintrex, Japanese Miniature Base, Japanese In-Line, Sylvania, and GE 90 Degree In-line, New Sony Trinitron, Zenith Special In-line, European 110 degree in-line, Sylvania 100 degree Color Tri-Potential, RCA 90 degree In-line, 110 degree Color, 90 degree Button Base, Large Trinitron, Small Trinitron.

Use with CRT Tester/Restorer/Rejuvinator.
**CHECKS: QUINTREX-IN-LINE — TRINITRONS — TRI
POTENTIAL — PINLESS — JAPANESE — EUROPEAN
90°; 100°; 110° ALL CRT's
VIDEO GAMES — COMPUTER TERMINALS, COLOR T.V.
SIZES 9" thru 26" SCREENS.**

GUARANTEED

to solve all your CRT Testing problems, Obsolescence Proof Perpetual Set-Up Manual Adapter Kit with Sockets.



****CHECKS OVER 2200 COLOR TYPES**
REPLACES OVER 25 ADAPTERS
B & K, BELTRON, SENCORE,
RCA, OTHERS**

**Call Toll Free
1-800-331-9658**

Comes with complete EASY-to-follow Instruction Manual and Picture Tube Index.

A MUST FOR THE TV TECHNICIAN

CALL US OR WRITE

Send Check or Money Order. CA-28 Kit \$61.95, add \$2.00 shipping and handling. Visa & Mastercard accepted.
DANDY MANUFACTURING CO.
1313 North Main Street, Muskogee, Oklahoma 74401
918/682-4286

Circle (18) on Reply Card

MODULAR PROBES FOR SALE

For All Oscilloscopes
To 300MHz
X1 to X100
Attenuation

Pictured
Accessories
Included



INSTANT REPAIR

Probe tip, Head BNC and Cable all screw into place easily and quickly.

TEST PROBES, INC. TPI

Your Probe Specialists

Circle U.S. Sales & Stocking Source P.O. Box 2115, La Jolla, CA 92038 (619) 459-4197

COMPARE PRICE — COMPARE PERFORMANCE

| Model | Attenuation | Bandwidth | Price |
|----------|-------------------|------------------------|---------|
| M12SW | X1-X10 Switchable | X1-10MHz X10-250MHz | \$69.00 |
| M12X10 | X10 | 250MHz | 59.00 |
| M12X10AP | X10 with Readout | 250MHz | 65.00 |
| M15X100 | X100 | 250MHz | 89.00 |
| M15X10HF | X10 | 300MHz | 75.00 |
| M12X1 | X1 | 30MHz | 36.00 |

Circle (33) on Reply Card

BELT IT TO 'EM

SELL BELTS
AT A PROFIT
USING THE
PRB SYSTEM



IT'S EXCLUSIVE!

Only PRB's copyrighted system puts the profit back into selling projector and recorder belts. Because the PRB stock number actually describes the belt you want. Measure a belt and find it instantly, without time-consuming references and cross-references.

FREE WITH A \$50 ORDER

You can get a wealth of valuable information — not just for belts, but for other components, too — free from PRB. Ask how you can get the PRB Technician's Reference Library.

For profitable products — and the references you need to make them even more profitable — call PRB. 1-800-558-9572

In Wisconsin: 1-800-242-9553
Business Number: 1-414-473-2151

TLX: 4994411 PRB USA
In Canada call collect: 1-613-225-5003

PROJECTOR RECORDER BELT
200 Clay Street
Whitewater, WI 53190



Circle (29) on Reply Card

(continued from page 20)

the path from the sampling gate back toward the original signal source. Either the source is incorrect, or a defect in a stage between the source and the gate is removing or degrading the signal.

After the approximate area of suspicion is identified, a series of power-off tests should be made in-circuit. These should include resistance checks, diode and transistor junction tests (Figure 10), and visual inspections.

Because of danger to transistors and ICs, power-on tests should not be made unless all others fail. If you are forced to perform power-on tests, use the insulated-hook type of probe, turning off the power before the connection is made, turning on the power only long enough to make the tests, and then turning off the power before disconnecting the test probe.

After repairs are made, repeat the playback test using an expen-

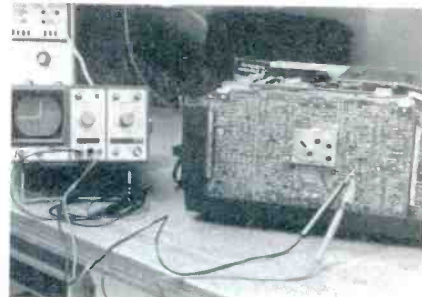


Figure 10. A scope or other instrument that tests capacitors and diodes by the current-versus-voltage method can be used for rapid in-circuit tests to find defective components. A Hameg scope is shown.

able tape, and then attempt to record and play back another work tape. Do not insert a new cassette or an expensive test tape until after you have *proved* the machine does not ruin tapes.

It is likely the machine needs head cleaning and routine lubrication, which should be done before the final tests. When the VCR is considered finished, carefully examine the picture quality and stability of your expensive standard test tape when viewed on a well-adjusted color receiver. Observing this sequence can minimize damage to your work tapes and prevent all damage to the expensive standard tapes, while reducing the number of unprofitable call-backs.

ES&T

Literature

A 36-page 2-color catalog from *Hamtronics, Inc.* features many new products, including an expanded line of FM repeaters and accessories such as power amplifiers, DTMF tone decoder/controllers, and autopatches. FM and AM receivers, FM transmitters, VHF and UHF transmitting and receiving converters, space shuttle receivers, 800MHz scanner converters and preamps are also included.

Circle (60) on Reply Card

A wide range of connector products, designed to help customers meet EMI/RFI requirements, including FCC Docket 20780, are detailed in a 16-page catalog published by *ITT Cannon*. Catalog FCC-1 provides product descriptions, performance characteristics, electrical data, contact arrangements, mounting and terminations, assembly data and

tips on how to select and order the proper connector and "black box" for your EMI/RFI requirements.

Circle (61) on Reply Card

A 12-page bulletin from *Superior Electric Company* gives complete specifications and ratings on the company's 5-way binding posts, supercon electrical connectors and 5-way test probes. Bulletin EC779-1 contains a detailed description of the new limited opening binding posts that are recognized components per UL Standard 1244 and are designed to prevent accidental contact with current carrying parts. Standard hex and fluted nut, miniature fluted nut and double assembly types are offered.

The Supercon Electrical Connector section describes panel board plugs and receptacles having 25, 50, 100 and 250A capacities. The plugs have a positive grip design, and all are available in nylon plastic in six colors. Also described are 5-way test probes for making fast, positive connections to PC boards and components. Their design permits plug-in, hook-on or touch contact connections.

Circle (62) on Reply Card

Answers to quiz

(from page 8)

1. A The output of the AND gate will always be logic 0. The inverter changes that output to logic 1. Due to the propagation delay of the inverter at the AND input there may be a glitch in the output.
2. A In hexadecimal numbers, 1110 is E and 1101 is D.
3. C When the input signal is a sine wave, the output signal should also be a sine wave. The two signals are 180 degrees out of phase. The lissajous pattern should be a straight line. This test is used to determine if the amplifier is distorting the signal.
4. B When the voltage drops are equal, $R = X_C$. Because $X_C = 1/2\pi fC$, it follows that $R = 1/2\pi fC$.
5. C The equation $Q = CV$ is important for understanding basic capacitor theory.
6. C
7. D The Ω/V rating is the reciprocal of the full-scale deflection.
8. B
9. D
10. A

PREVENT HI-TECH HEADACHES

Our Isolators eliminate equipment interaction,

clean up interference, curb damaging power line spikes and lightning bursts.



ISO-1 Isolator

3 isolated sockets; quality spike suppression; basic protection. . . \$76.95

ISO-3 Super-Isolator

3 dual isolated sockets; suppressor; commercial protection. 115.95

ISO-17 Magnum Isolator

4 quad isolated sockets; suppressor; laboratory grade protection. . . 200.95

ESP® Electronic Specialists, Inc.
171 S. Main St., Box 389, Natick, MA 01760

Toll Free Order Desk 1-800-225-4876
MasterCard, VISA, American Express

Circle (19) on Reply Card

ATTENTION TECHNICIANS

- ★ JOB OPENINGS
- ★ MONTHLY TECHNICAL TRAINING PROGRAM
- ★ BUSINESS MANAGEMENT TRAINING
- ★ LOW COST INSURANCE
- ★ CERTIFICATION
- ★ TECHNICAL SEMINARS

All of this in a nonprofit international association for technicians

FIND OUT MORE:



R.R. 3 Box 564
Greencastle, IN 46135

Marketplace

ATTENTION ELECTRONIC TECHNICIANS



Highly Effective Home Study BSEE Degree Program for Experienced Electronic Technicians
Our New Advanced Placement Program grants Credit for previous Schooling & Professional Experience. Advance Rapidly! Our 36th Year!
FREE DESCRIPTIVE LITERATURE!

Cook's Institute of Electronics Engineering
DESK 15, P.O. BOX 20345, JACKSON, MS 39209

Circle (22) on Reply Card

FREE KIT Catalog

Test Equipment-Kit or Assembled
FUNCTION GENERATOR Kit \$59.95
Auto-Ranging Cap-meter kit \$79.95

Phone 209-772-2076

Circle number or phone for catalog.

DAGE SCIENTIFIC INSTRUMENTS
BOX 144 VALLEY SPRINGS CA 95252

Circle (23) on Reply Card

Use ES&T
classified ads

Maybe We're Too Discrete About Our Discrete Products

Diode Specials

In Lots of 100

| | | | |
|--------|------------|--------|------------|
| 1N4148 | \$3.60/100 | 1N4004 | \$3.60/100 |
| 1N4001 | 3.00/100 | 1N4005 | 4.00/100 |
| 1N4002 | 3.25/100 | 1N4006 | 4.50/100 |
| 1N4003 | 3.40/100 | 1N4007 | 5.50/100 |

Transistor Specials

| | | | |
|---------|------------|--------|-------------|
| PN2222A | \$8.00/100 | 2N3906 | \$12.00/100 |
| PN2907A | 8.00/100 | 2N3055 | .65 ea. |
| 2N3904 | 12.00/100 | | |

Carbon Film Resistors

1/4 Watt 5% Tolerance

Now Only \$1.50/100

All 5% Values Available

Specializing in:

Resistors

Transistors

Diodes

SCRs

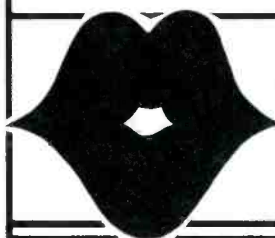
Full Wave Bridges

STOCKED
IN
DEPTH

And the Old and Exotic!

Call Liz and ask
about her parts today!

We also purchase excess inventories.
Call Martha about your parts today!



"Have You Kissed Your Computer Lately?"
Components Express, Inc.

1380 E. Edinger • Santa Ana, Calif. 92705 • 714/558-3972

TWX 910-595-1565 • ADVACON SNA • International Orders Welcome

Terms of Sale: Cash, Checks, Credit Cards, M.O., C.O.D. FOB Santa Ana.

Calif. residents add 6% sales tax.

Circle (24) on Reply Card

FORDHAM DISCOUNTS DISCOUNT PRICES ON HITACHI SCOPES

SPECIAL OFFER!
For a limited time only

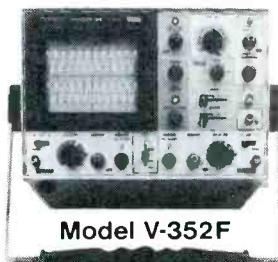
35 MHz DUAL TRACE SIGNAL DELAY LINE

Vertical sensitivity 5m V/div to 5V/div
and 1m V/div to 1 V/div with 5X
amplifier • Trigger modes Auto-
matic, Normal, TV (+), TV(-).

REG \$895
OUR PRICE

\$599⁹⁵

WITH PROBES



Model V-352F

60 MHz DUAL TRACE DELAYED SWEEP

High sensitivity • 1 mV/div
(10 MHz) • 5 ns/div sweep rate
• 3rd channel display (trigger
view) • Variable trigger hold-off
• Full TV trig-
gering • Single
sweep • Auto-
matic focus
correction.

OUR PRICE
\$995
WITH PROBES

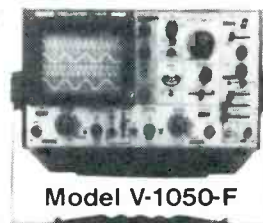


Model 650F

100 MHz QUAD TRACE DELAYED SWEEP

Large, bright 8x10 cm screen
• Quad trace operation/Ch1, Ch2,
A trigger and B trigger • High
sensitivity 500 μ V/div (5 MHz)
• Full TV
triggering.

OUR PRICE
\$1299⁹⁵
WITH PROBES

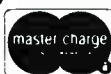


Model V-1050-F

TOLL FREE (800) 645-9518

FORDHAM

260 Motor Parkway, Hauppauge, N.Y. 11788



in N.Y. State 800-832-1446

■ VISA ■ COD ■ Master Charge
■ Money Order N.Y. State residents add
appropriate sales tax.
COD's extra (required 25% deposit)

ADD FOR SHIPPING AND INSURANCE

| | | |
|--------------------|-------|--------|
| \$250.00 | | \$4.50 |
| \$251.00 to 500.00 | | 6.50 |
| 501.00 to 750.00 | | 8.50 |
| 751.00 to 1000.00 | | 12.50 |
| over 1000.00 | | 15.00 |

WE HAVE A LOT TO BRAG ABOUT AT ORA ELECTRONICS

ONE HOUR SHIPPING



Other companies brag about 24-hour shipping, but we at ORA Electronics have the best shipping time in the industry. ONE HOUR — that means that you can have that important part in your hands as early as the next day.

HIGH IN-STOCK RATIO

**95%
IN
STOCK**

ORA Electronics has the highest "in stock" ratio in the industry (95%). The average stocking ratio in the business is 75%. That means less back orders or "out of stock" items when you order from us!

BETTER SERVICE



Nobody offers better service than ORA Electronics — that includes packing, order handling, customer service and quality control. Our employees are highly trained and experienced to better serve you.

LOWER PRICES



Other companies lower the price on some items and advertise them heavily. We at ORA Electronics have a lower overall price—and yes, you'll like OUR total better!

FREE SHIPPING



Only ORA Electronics offers free shipping for prepaid orders (in the continental U.S.A.). For COD, charge and open account orders, we charge only actual shipping costs, no handling charges whatsoever!

TWO YEAR WARRANTY



All ORA Electronics' semiconductors and many other products are guaranteed for two full years. ORA Electronics has the longest warranty in the industry because we know what we sell: prime grade parts, and they are tested for quality.

ORIGINAL PARTS



ORA Electronics offers you only original semiconductors, no "replacements" or "substitutes" or "almost the same" parts. Some other companies re-label their parts. When you order from us, you can be sure that every semiconductor you buy is a prime grade, ORIGINAL, tested part.

POPULAR CATALOG



ORA Electronics' catalog is the most copied catalog in the industry. It's the easiest to follow, the prices are not confusing, and a comprehensive index is included. Send for your free copy today!

Call toll free: (800) 423-5336.
Calif. toll free: (800) 382-3663.
Non-order info: (213) 701-5850.
Local: (213) 701-5848.



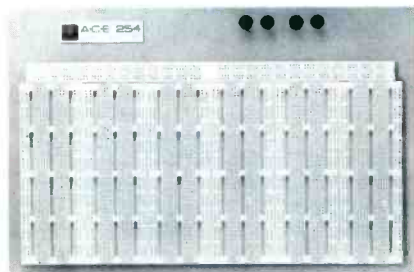
"OUR SERVICE MAKES THE DIFFERENCE"

18215 PARTHENIA ST., NORTHridge, CA 91325

Products

All-circuit evaluators

AP Products has expanded its line of all circuit evaluators in response to requests for breadboards that can accommodate larger testing and prototyping projects.



The ACE 245 features a universal matrix of 4488 solderless plug-in tie-points, and is composed of 640 separate 5-tie-point terminals, 40 vertical distribution buses, and 4 horizontal buses.

For larger projects, the ACE 254 combines the plug-in ease of a 0.1" x 0.1" solderless matrix with the convenience of 768 separate distribution buses of 5-tie-points each, plus 4 horizontal buses.

Circle (70) on Reply Card

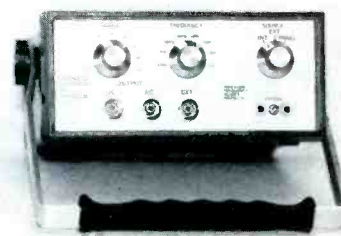
Frequency source

A low-cost, portable precision frequency source that is battery powered for absolute line isolation is available from *Technical Novations*. The model 130 has high stability and accuracy with a total of 58 discrete frequencies between 4MHz and 0.008Hz and provides both decade and binary division of its 4MHz crystal oscillator. Provisions are included to use an external crystal or use the decade/binary dividers only with an external signal input. Calibration is traceable to the National Bureau of Standards.

The instrument requires no warm-up to reach rated accuracy. It is powered by rechargeable ni-cd batteries. A wall-plug-type transformer is included for recharging.

Calibration applications include oscilloscope time base, plotter and

X/Y recorders, radio receiving equipment and frequency to voltage converting equipment. Testing and measuring applications include pulse rate converter



systems, frequency counting and measuring equipment, filter response evaluation and as a variable clock for use with microcomputer and microprocessor systems.

Circle (71) on Reply Card

Logic trainer

The Logic Trainer Model 100 from *L. J. Broder Enterprises* is a device for fast, straightforward learning of digital circuits. No prior training is required. Read the self-paced manual and become familiar with several digital components. Solve the applicable trainer problems for retention and

MOVING?

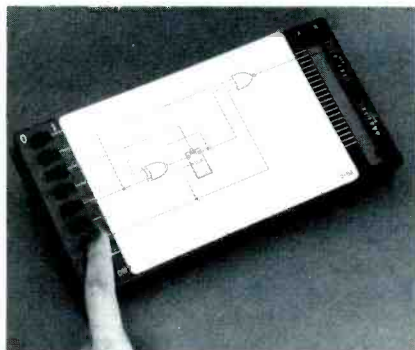
If you're planning a move in the near future, don't risk missing an issue of *Electronic Servicing & Technology*. Please give us 6-8 weeks notice if you're planning on changing your address. Just write in your new address below and mail this coupon, **WITH YOUR SUBSCRIPTION MAILING LABEL**, to:

ELECTRONIC
Servicing & Technology

Subscriber Services
P. O. Box 12901
Overland Park, KS 66212

Name _____
Address _____
City _____ State _____ Zip _____

understanding. Then repeat this process with additional devices. No IC or wire manipulation is required. Boolean algebra (a design aid) is not part of the basic course. The logic trainer may be used for



testing, training, and upgrading the performance of trouble-shooters.

Solving the trainer problems requires manipulating the input logic states to produce a logic "1" at the output (a bar will appear on the LCD). The portable unit covers gates, flip-flops, transistors, relay logic and commonly used circuits.

Circle (72) on Reply Card

Test prods and patch cords

A line of test prods and patch cords featuring solderless crimp-on connections for strain relief and long life has been introduced by *E. F. Johnson Company*. The line is comprised of 154 different combinations of interconnects, colors and lengths that conform to the latest UL and ANSI safety standards.



The test prods have molded flanges for protection against electrical shock, anti-slip ribs for better grip, and tips that are threaded to accept spade lugs or alligator clips. The meter input end of the test prods have shrouded standard banana plugs for maximum protection, and tapered back ends and anti-slip ribs for a good gripping

surface. They are insert-molded to provide a reliable integrated unit.

The patch cords are available hook-to-hook, hook-to-standard banana plug, hook-to-miniature banana plug, hook-to-bare wire, standard banana plug-to-standard banana plug, or alligator clip-to-alligator clip. The hooks have plunger-type action with stainless steel springs and contacts of beryllium copper and gold plate for low resistance. They hook securely to lead sizes up to .040-inch diameter and slide onto the .025-inch square posts.

Circle (73) on Reply Card

Multi-function counter

VIZ Model WD-755, is a lab-quality multi-counter capable of frequency, period, totalize, ratio and time-interval measurements. A combination of CMOS, TTL, low power Schottky and LSI technology have been used to keep power consumption and cost low, while maintaining optimum circuit characteristics. Some features of the WD-755 include bright LED 8-digit display with leading zeros blanked, automatic input triggering level, switchable attenuator, selectable lowpass filter, push-button reset switch, and rear panel BNC clock input/output connector. All critical circuits are enclosed in a shielded metal chassis to reduce E.M.I./R.F.I.

Circle (74) on Reply Card

Troubleshooting course

"Microprocessor Troubleshooting" is a video-based course from *Integrated Computer Systems* that provides a comprehensive introduction to equipment and techniques specifically intended for troubleshooting microprocessor-based products. The course introduces a wide range of troubleshooting equipment from oscilloscopes and probes to microcomputer-specific equipment, such as logic analyzers, in-circuit emulators and signature analyzers.

Computer graphics and animation are used extensively to illustrate the techniques. The color videotape is supported by comprehensive tutorial materials that provide guidance and reinforcement.

Circle (75) on Reply Card

EARN BIG MONEY REPAIR GAMES & COMPUTERS

**ATARI 2600, 2600A
ATARI 400, 800 COMPUTERS
COLEVISION • INTELLIVISION**

EXCLUSIVE! All popular game and computer parts now available from a single source!

EWC is the exclusive national distributor of Kurz-Kasch Signature Analyzers and Test Fixtures, and the largest distributor of test instruments and supplies for digital servicing.

Over 28 years of proven quality, affordable prices, fast service, and guaranteed satisfaction at EWC, your one-stop electronic parts supplier.

**COMPARE OUR LOW PRICES AND
TRY US FOR YOUR EVERY-DAY
REQUIREMENTS.**

**GENERAL
ELECTRIC
TUBES**

10 pc. minimum
may be assorted

75% OFF
LIST

**THORDARSON
#VMT-08
TRIPLERS**

Replaces GE-528, ECG-523, SK-3306. First line, boxed premium quality.

only **\$9.95** each

Call toll-free on our 24 hour order hotline and ask for your copy of our new 92 page catalog.

MasterCard

VISA

ELECTRONICS WAREHOUSE CORP.

1910 Coney Island Avenue
Brooklyn, N.Y. 11230 • (212) 375-2700
CALL TOLL FREE: (800) 221-0424

Circle (26) on Reply Card

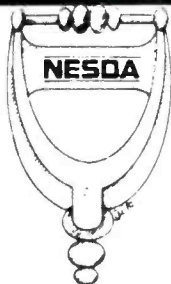


SINCE 1950

- LEADING SPOKESMAN
- TRADE INFORMATION DISPENSER
- WATCHDOG
- NATESA SCOPE
- STANDARDS YARDSTICK
- CONSUMER RELATIONS
- PROBLEM SOLVER
- CONCISE PRACTICAL BUSINESS OPERATIONS MANUAL
- SERVICE CONTRACT MANUAL
- CUSTOMER PLEASING PROFIT PRODUCING ORDER FORMS
- PARTS PROCUREMENT EXPEDITOR
- SERVICE BUSINESS
- DIVERSIFICATION PLANS
- TECHNICIAN DEVELOPER

5930 So. Pulaski Rd. • Chicago, Illinois 60629

Business Opportunity



It's plenty tough being an electronics sales and service dealer these days.

That's why we're working so hard to make it easier for you to operate a cost-effective business.

NESDA offers business contacts, technical and management certification, substantial savings on bank card and insurance rates — and that's just the beginning!

NESDA members are kept informed about industry developments and are offered the most comprehensive managerial and technical training programs available. Besides, NESDA is your representative at the national level — including your voice to manufacturers and the agencies of the federal government.

Opportunity knocks . . .
Answer it!

National Electronics Sales & Service Dealers Association
NESDA

For more information and an application, write to:
NESDA, 2708 W. Berry St., Ft. Worth, TX 76109; Ph (817) 921-9061

Name _____
Bus. Name _____
Address _____
State _____ Zip _____ Phone _____
Member of State ☐ Local ☐ Assn. _____

Learn About Professionalism and Profit . . .

. . . while enjoying the time of your life!

At the 1984 Annual NESDA/ISCET National Professional Electronics Convention

and "Arch of Progress" Trade Show

1984
The Gateway To Professionalism

- Products • Service Aids • Test Equipment
- Management & Technical Seminars • Golf & Tennis Outings • Instructors Conference
- Dealer/Mfr. Meetings • Officer Elections
- Sponsored Meals • Dealer Panels • Parties
- Special Children's Rates • Low Hotel Rates • Tax Deductible Vacation

August 6-12 Sheraton-St. Louis Hotel St. Louis MO

Early Registration Discounts. Also discounts for additional persons from same family or business.

Send for more details — Now!

Send for more information and an application to:
NPEC, 2708 W. Berry St., Ft. Worth, TX 76109; Ph (817) 921-9061

Name _____
Address _____
City _____ State _____ Zip _____

Classified

Advertising rates in the Classified Section are 50 cents per word, each insertion, and must be accompanied by payment to insure publication.

Each initial or abbreviation counts a full word.

Minimum classified charge \$10.00.

For ads on which replies are sent to us for forwarding (blind ads), there is an additional charge of \$3.00 per insertion to cover department number, processing of replies, and mailing costs.

Classified columns are not open to advertising of any products regularly produced by manufacturers unless used and no longer owned by the manufacturer or distributor.

FOR SALE

COMPLETE JERROLD WIRELESS REMOTE/DE-SCRAMBLER—full warranty, \$159.00. Complete Oak descramblers, full warranty, \$169. Trap/filters in line type, \$49, 2 min. installation, SG613 transistors, only \$6.99. Original Toshiba 2SC1172B, only \$1.99 with hardware. 100/450, 80/480, 200/300, 40/450, 25 1st only \$1 each mixed or single lot. Super special while they last 800-860 41 each safety caps Zenith type, 10 lot only \$2.50. Bulk 2SC1172B only 50 lot, \$1.69. Redcoat Electronics, 104-20—68th Drive, Forest Hills, NY 11374, (212) 459-5088. 5-83-tfn

CB RADIO BOOKS, kits, modifications. Catalog \$1.00 refundable. APS, POB 263, Newport, RI 02840. 6-83-12t

FOR SALE (CONT.)

CABLE CONVERTERS, decoders, \$1.00 Refundable APS, POB 263ES Newport, R.I. 02840. 1-84-tfn

SUBSCRIPTION TV MANUAL, covers all three major scrambling systems, only \$12.95. Includes theory, circuits, waveforms and trouble shooting hints. Save your VIDEO GAME CARTRIDGES on EPROM with our EPROM duplicator. Plans \$9.95. Catalogue \$2.00, refundable. RANDOM ACCESS, Box 41770A, Phoenix, AZ 85080. 8-83-tfn

2SC1172B's, 50 LOTS—\$1.69; 2SC1308K's, original Sanyos, 50 lots—\$1.99; Cheater cords, 25 lots—35¢; pol- and non-polarized, 1,000 ft. reels of RG 59 U. Coax Cable—\$39/roll. Minimum order \$75. Redcoat Electronics, 104-20 68th Drive, Forest Hills, NY 11375, 212-459-5088. 10-82-tfn

ELECTRONIC SURPLUS: CLOSETOUTS, LIQUIDATIONS! Parts, equipment stereo, industrial educational. Amazing values! Fascinating items unavailable in stores or catalogs anywhere. Unusual FREE catalog ETCO-011, Box 762, Plattsburgh, NY 12901. 6-78-tfn

SPRING SPECIALS on Popular Electrolytics—40/450V—75¢; 80/450V—85¢; 100/450V—95¢ 200/300V—\$1.05. Quantity 20 lot only. Minimum order of \$50. SUPER SPECIALS. Bulk Zenith safety capacitors 800-860, 12 lot only \$2.50 each. REDCOAT ELECTRONICS, 104-20 68th Drive, Forest Hills, NY 11375, 212-459-5088. 10-82-tfn

SCRAMBLED TELEVISION, encoding/decoding. New book. Theory/circuits, \$9.95 plus \$1 shipping. Workshop, Box 393ES, Dept. E, Bethpage, NY 11714. 7-80-tfn

WHOLESALE—transistors, flybacks, yokes, batteries, Weller/Xcelite, VCR, computer parts. Apple Compatible computers, printers, drives, monitors, custom electronics software. More. Send for catalog. United Service Association, Old Grand Union Shop, Ctr. Rt. 9W, Stony Point, N.Y. 10980 (914) 942-2173. 1-84-tfn

FOR SALE (CONT.)

TUBES—Receiving, Industrial and Semi-conductors, factory boxed. Free price list. Low, low prices. TRANSLETTERONIC INC., 1365-39th Street, Brooklyn, NY 11218E, 800-221-5802, 212-633-2800. 5-82-tfn

TV TROUBLE ANALYSIS TIPS. Over 300 symptoms/ remedies by circuit area; tough ones over the years. Save time and money. Send \$12.50 to CHAN TV, 8151 Grandview Rd., Chanhassen, MN 55317, 5-82-tfn

PRINTED CIRCUIT boards from your sketch or artwork. Affordable prices. Also fun kit projects. Free details. DANOCINTHS INC. Dept. ES, Box 261, Westland, MI 48185. 5-81-tfn

SONY-PANASONIC-RCA-ZENITH-EXACT REPLACE-MENT PARTS-LARGE INVENTORIES-SEND PART OR MODEL NUMBERS-WILL UPS OR COD-GREEN TELE-RADIO DISTRIBUTORS. 172 SUNRISE HIGHWAY, ROCKVILLE CENTRE, NY 11570. 5-82-tfn

AUTOMOBILE RADIO and tape replacement parts: Delco, Chrysler, Philco-Ford, Motorola, Panasonic and many others. Large inventory. Laran Electronics, Inc., 3768 Boston Road, Bronx, NY 10469. (212) 881-9600. out of New York State (800) 223-8314. 5-79-tfn

COLOR PICTURE TUBES direct from manufacturer. Prices from \$55 to \$75 exchange. One year warranty. Send your old tube ups to ATOLL Color Tubes. 6425 West Irving Park, Chicago, Illinois 60634. Phone: 312-545-6667. We also sell equipment for rebuilding CRT's. 12-83-3t

TV Service equipment (B&K) needed to start business. 10 mc. scope, \$3000 worth tubes, transistor tester, DMM, some Sams, sweep marker-generator. \$750. 22 Pearl Street, Camden, Maine 04843. 207-236-3405. 1-84-tt

FOR SALE (CONT.)

PICTURE TUBE REBUILDING EQUIPMENT: Small or Medium Plant Operation. Production Capability — 12 to 28 High Quality Tubes Daily. Call or write: TELECO, 2610 E. Busch Blvd., Tampa, FL 33612, 813-935-4002.
1-84-3t

USED RADIO-TELEVISION TUBES. All types. Working condition. 30 for \$13.00 postpaid. Loeb, 414 Chestnut Lane, East Meadow, NY 11554.
1-84-3t

VIC-20 TV-Test Generator cassette. Crosshatch, color-bars, dots, H&V-lines, window, 5 colored rasters, 3 tones. \$9.95. Jerry Hilliard, 3223 Ellis Way, Louisville, KY 40220.
1-84-1t

INDIVIDUAL PHOTOFAC FOLDERS (not sets) under \$1200. First class postpaid \$3.00. Loeb, 414 Chestnut Lane, East Meadow, NY 11554.
11-83-3t

BUSINESS OPPORTUNITIES

LEARN TO REPAIR HOME VIDEO GAMES IN YOUR OWN SHOP! Did you know that more than 9 million HOME VIDEO games have been sold? Now you can learn to repair! Atari, Coleco, Intellivision, or Atari 400/800 computers in your own shop. Our courses are taught on VIDEO TAPE (Beta or VHS) and come with a manual containing all the necessary technical information you will need to do repairs. For more information or to order, call: Electronic Institute (800) 221-0834 (outside N.Y.) or (212) 377-0369 (in N.Y.). Customized live in shop training courses are also available, call for more information and price schedules.
7-83-tfn

RESIDENTIAL SECURITY ALARM sales are exploding and the Rampart Associate Program offers you ENORMOUS PROFIT POTENTIAL PLUS EXCITING RESIDUAL INCOME. Rampart's success and reputation are a result of a total business format approach for the residential, small commercial market and its new low cost system, the Rampart REACTOR, with central station monitoring. We provide product, marketing and management training with complete backup. Start part time, full time. No experience necessary; just a strong desire to succeed and help your customers. Investment only \$2,850. With only 6% of the market penetrated, now's the time to get yourself started in what Time Magazine calls the "runaway growth industry." Call Mr. Roberts 1-800-823-8002 or write, Rampart Ind. Inc. One Oxford Valley, Langhorne, PA 19047.
11-83-tfn

SPEAKER RECONING: Most makes, sizes, models. For prompt service send to Mercury Speaker Reconing, 2018 W. Division St., Chicago, Illinois, 60622; (312) 278-2211.
9-83-tfn

TV REPAIR BUSINESS in Sanford, Florida, \$25,000. Established 11 years, owner retiring. For details call (305) 323-1734 weekdays, or (305) 322-0667 nites and weekends.
1-84-1t

NORWALK, CALIFORNIA ESTABLISHED TV AND STEREO SERVICE AND SALES very busy money maker, excellent location, low rent, very good lease, 2300 square feet, 10 minutes to beaches and Los Angeles. \$40,000 includes inventory, large enough for living quarters, owner retiring, phone 213-863-1919.
11-82-tfn

HIGH PROFITS—LOW INVESTMENT: with our CRT rebuilding equipment. Complete training and technical assistance. Guaranteed result. Atoll Television. 6425 W. Irving Park, Chicago, Illinois 60634, PH 312-545-6667.
12-83-3t

WANTED

WANTED FOR CASH: 50, 53, 6AF6, 6HU8, 304TL, 4CX1000A, 4-1000A, all transmitting, special purpose tubes of Eimac/Varian, DCO, Inc., 10 Schuyler Avenue, North Arlington, New Jersey 07032. Toll Free (800) 526-1270.
5-82-tfn

TELEVISION SERVICE SHOP in Florida or California. Call or write ATOLL TV, 6425 West Irving Park, Chicago, IL 60634; Ph. 312-545-6667.
11-83-3t

ELECTRONIC

Servicing & Technology

Advertising Sales Offices

NATIONAL SALES MANAGER

Greg Garrison
P.O. Box 12901
Overland Park, KS 66212
Phone: (913) 888-4664

LONDON, ENGLAND

John Ashcraft & Co.,
John Ashcraft
12 Bear Street, Leicester Square
London WC2H 7AS, England
Phone: 930-0525 Telex: 895-2387

AMSTERDAM, Holland

John Ashcraft & Co.
John J. Lucassen
Akerdijk 150A
1171 PV-Badhoevedorp, Holland
Phone: 0-2968-6226 Telex: 18406 HARKE NL

TOKYO, JAPAN

Haruki Hirayama,
EMS, Inc.
Room 801, Shinjuku Komuro-Heim
1-22, Shinjuku 4-chome, Shinjuku-ku
Tokyo 160, Japan
Cable: EMSINCPERIOD
Phone: (03) 350-5666
Telex: 2322520 EMSINCJ

NORWOOD, AUSTRALIA

Hastwell, Williamson, Rouse PTY. LTD.
P.O. Box 419
Norwood, S.A. 5067
Phone: 332-3322
Telex AA 87113



Everyone benefits...
pricing by "The Book"

1-800-228-4338

MON. THRU FRI. 8-5 / C.S.T.

Circle (27) on Reply Card

SAVE TIME

For fast, accurate service, please remove the Peel-Off Label (which is used to address your magazine) and affix it to the Reader Service Card, the Address Change Card, or to any correspondence you send us regarding your subscription.

Advertisers' Index

| Reader Service Number | Page Number |
|-----------------------|--|
| 32 | B&K Precision 53 |
| 14 | Chemtronics, Inc. 39 |
| 24 | Components Express, Inc. 58 |
| 28 | Consolidated Electronics, Inc. 64 |
| 22 | Cook's Institute of Electronics Engineering 58 |
| 6 | The Cooper Group 7 |
| 23 | Dage Scientific Instruments 58 |
| 18 | Dandy Manufacturing Co. 55 |
| 17 | Digitron Electronics Corp. 49 |
| | ETA 57 |
| 19 | Electronic Specialists, Inc. 57 |
| 12 | The Electronics Book Club 21 |
| 26 | Electronics Warehouse Corp. 61 |
| | John Fluke Mfg. Co., Inc. 5 |
| | Fordham Radio Supply 58 |
| 21 | Global Specialties Corp. 51 |
| 13 | Heath Co. 37 |
| 34,35 | Leader Instrument Corp. 9 |
| 4 | MCM Electronics 1 |
| 10 | Millicom Corp. 17 |
| | NATESA 61 |
| | NESDA 62 |
| | New-Tone Electronics, Inc. 28 |
| 9,11 | North American Philips 15,19 |
| 15 | Optima Electronics 39 |
| 25 | ORA Electronics 59 |
| 1 | PTS Corp. IFC |
| 8 | Panasonic (Publications Div.) 11 |
| 16 | Primefax 49 |
| 29 | Projector-Recorder Belt Corp. 56 |
| 2,3 | Sencore, Inc. BC |
| 30 | Simpson Electric Co. 45 |
| 31 | A.W. Sperry Instruments Inc. 43 |
| 27 | Sperry Tech, Inc. 63 |
| 20 | Spi-Ro Distributors 55 |
| 33 | Test Probes, Inc. 56 |
| | Zenith Radio Corp. IBC |

Daily Specials made to order!

CEI is offering a smorgasbord of **DAILY SPECIALS** for you! Our appetizing special is DIFFERENT EVERYDAY OF THE WEEK.

Here's how our menu works: Let's say you CALL CEI, **TOLL FREE TODAY**, and you're hungry for quality parts at low prices. All you have to do is ask us what our daily special is. Simple? Of course it is!

1-800-543-3568

NATIONAL WATS LINE

CALL
TOLL FREE

1-800-762-3412

OHIO WATS LINE

CEI

Consolidated Electronics, Inc.

705 Watervliet Ave. Dayton, Ohio 45420
In Dayton, Ohio, Call 252-5662



Circle (28) on Reply Card

Now! With every qualifying purchase of

ZENITH

VIDEO / AUDIO ACCESSORIES You Can Earn JCPenney Gift Certificates

Today, with so many tapping into TV for more than the news, sports, and the typical TV fare available till now, Zenith introduces a host of electronic accessories to help you capitalize on this — the fastest-growing segment of the video business.

Sell!

Zenith's Video Organizer for Easy Access to More Video Program Sources!

Sell!

All Kinds of Electronic Connectors from Their Own Zenith Floor Display!

Sell!

The Biggest, Broadest Line of Video/Audio Accessories Ever to Carry the Zenith Name!

Included in this assortment of electronic viewing and listening aids are Zenith's Video Organizer...indoor and outdoor antennas...super lightweight stereophones...Zenith 2-prong and 3-prong Spike Suppressors...plus all sorts of electronic accessories ranging from plugs and jacks to cables individually labeled and packaged for prominent display and fast turnover.

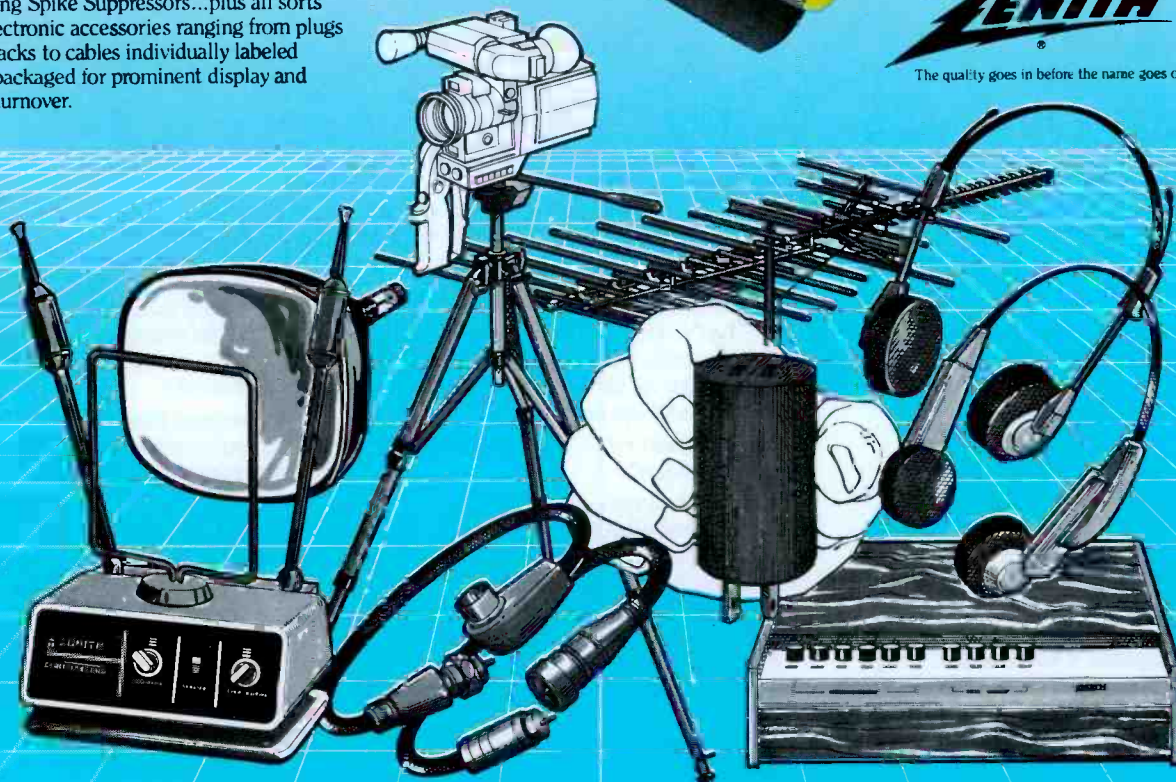
Now's the time, the prime time to strike it rich — with Zenith merchandising savvy! — in the fastest-growing segment of the video business. Healthy margins! Cash-and-carry! That's what you'll like about selling Zenith video/audio accessories. And now, another "bonus" to an already great program. Look:

Now! And for a limited time only! You can earn JCPenney Gift Certificates with every qualifying purchase of Zenith Video/Audio Accessories from a participating Zenith distributor...and exchange these gift certificates for over 135,000 products and services available through JCPenney stores and catalogs.

Check now — today! — with your Zenith distributor's Parts Manager to learn how you can join in this great Zenith/JCPenney Gift Certificate Program!

ZENITH

The quality goes in before the name goes on!



Zenith Radio Corporation / Service, Parts & Accessories Division / 1100C Seymour Avenue / Franklin Park, Illinois 60131

The people who gave you the Video Service Standard of the 70's. Now Introduce the all new standard for the 80's—MODEL VA62.



Cut your video service time in half

The Sencore VA48 TV Analyzer, introduced in 1976, quickly became the industry standard for video service. It is now used by more than 22,000 technicians nationwide who have averaged an overall 54% reduction in service time, according to a recent survey of VA48 owners.

But Times Change: Today's video circuits include projection TV, 4-head VCRs, SAW filters, comb filters, integrated flybacks, cable-ready tuners,

and many more circuits you just can't service effectively with the VA48. That's why we now have the VA62—the only video analyzer that equips you for all of these new video circuits—and then some.

In a Nutshell: Here's what makes the VA62 unique:

- It's a TV analyzer—Fully updated for the latest circuits.
- It's a VCR analyzer—Makes VCR analyzing a snap (using two inexpensive accessories) . . . and it meets all manufacturers' requirements.
- It's cable-ready—Test all the latest digital tuners.
- It has unique patterns—Special test patterns, plus standard pat-

terns simplify troubleshooting.

- It's obsolete proof—It can be updated as needed for new circuits or formats . . . quickly and inexpensively.

Guaranteed Results: The VA62 can cut your service time in half on all video circuits—new and old. We guarantee it or we'll refund your money at the end of 30 days.

Update Today: If you're ready to update your bench to service the new circuits of the 80's, write or call toll-free today for a complete color brochure.

TOLL-FREE 1-800-843-3338

In Canada Toll-Free 1-800-665-4871
South Dakota, Alaska, and Hawaii call collect at 605-339-0100.

Please send complete VA62 details:

Name _____
Address _____
City _____
State _____ Zip _____
Phone _____

(Mail to Sencore, 3200 Sencore Drive,
Sioux Falls, SD 57107)

For Information Circle (2) on Reply Card
For Demonstration Circle (3) on Reply Card

SENCORE