

Atronic Cashline™
Wide Body Cabinet (WBC)
Installation Manual



Rev. 2.4

February 2008

Release Info:

Atronic Cashlin™
Wide Body Cabinet (WBC)
Installation Manual

Rev. 2.4

February 2008

WARNING!

This manual is intended to provide QUALIFIED TECHNICAL PERSONNEL ONLY with the information necessary to routinely maintain, service, and repair the Atronic Cashline™ Wide Body Cabinet (WBC) and components. To avoid personal injury or damage to the equipment, do not perform any serviceing other than that contained in this manual.

Copyright Notice:

© 2000-2008, Atronic. All rights reserved.

No part of this publication may be copied or distributed, transmitted, transcribed, stored in a retrieval system, or translated into any human or computer language, in any form or by any means, electronic, mechanical, magnetic, manual, or otherwise, or disclosed to third parties without the express written permission obtained from a properly authorized official of Atronic.

DISCLAIMER

Atronic makes no representation or warranties, express or implied, with respect to this publication, or any product of Atronic, including but not limited to warranties of merchantability or fitness for any particular purpose. Atronic reserves the right to make changes, enhancements, revisions and alterations of any kind to this publication or the product(s) it covers without obligation to notify any person, institution or organization of such changes, enhancements, revisions and alterations.

TRADEMARKS

This document may contain trademarks of Atronic. All other brand and product names are trademarks or registered trademarks of their respective companies.

Introduction

About this Manual

Scope, Target Audience, Included Software Releases	4
Related Publications	5

Safety Instructions	7
----------------------------------	---

Machine Components	10
---------------------------------	----

Dimensions	12
-------------------------	----

Technical Data	13
-----------------------------	----

Machine Installation

Overview	15
Machine Mounting	16
Drilling Template	17
Install Toplight	18
Replace Shipping Locks	18
Prepare Coin Acceptor	19
Prepare Hopper	19
Check Connectors	19
Check Commboard Settings	20
Apply Power	20
Switch On	20

Basic Setup (Overview only)	21
--	----

Tests	22
--------------------	----

Technical Support Telephone Numbers	23
--	----

ABOUT THIS MANUAL

Scope

This Installation Manual describes how to install an Atronic Cashline™ - Wide Body Cabinet (WBC) gaming machine.

It describes how to mount the machine to a base stand and relevant procedures to be carried out before the machine can be put into operation. Further it contains important safety instructions, technical data and cabinet drawings.

Target Audience

We address qualified technical personnel, who are involved in installation, setup and configuration of Atronic gaming machines. With this user group we assume that they are basically familiar with gaming machines and casino related terminology.

Please read this document and the contained safety notes carefully **before** you start machine installation.

Included Software Releases

The installation procedures described in this manual do not relate to a certain software version.

ABOUT THIS MANUAL

Related Publications

More detailed information about Atronic Cashline™ Wide Body Cabinet (WBC) gaming machines may be found in the following publications:

Software Manuals

- Software Manual / O-Level
- Software Manual / O-Level (Multidenom)
- Software Manual / P-Level

Operation Manuals

- Cashline™ Operating Manual / O-Level
- Cashline™ Operating Manual / P-Level

Spare Parts

- Atronic Cashline™ WBC / Parts Catalogue

Peripherals

(Coin- and bill acceptors, hopper, printer, etc.)

- See folder "Peripherals" on the Atronic Service Manual CD.

Note: All mentioned manuals can be found on a CD-ROM titled "**Atronic Service Manual 2008**"

If this manual did not come with this CD-ROM, please ask Atronic Technical Service for a free copy of the latest revision.

- blank page -

SAFETY INSTRUCTIONS

SAFETY INSTRUCTIONS



Follow the precautions below to ensure safe operation.

Caution! High Voltage

The power cable must be disconnected from the main power socket, before the machine is free from electrical current. The main power switch is intended for service purposes only.

Caution! Tipping Hazard

Machine **must** be fastened to an appropriate base, to prevent tipping over.

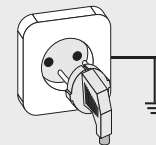
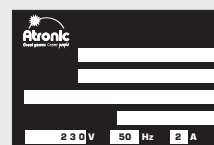
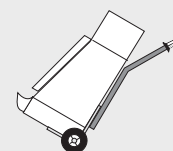
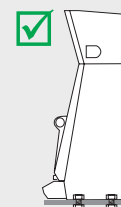
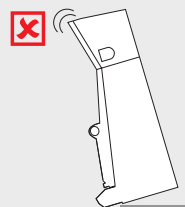
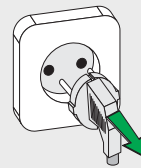
Caution! Moving Parts

Make sure to disconnect the hopper, when working on it.

Precautions before operating

- The machine weighs about 100kg (220 lb). At least two persons should carry or lift it. Use a cart to transport the machine.
- **Machine must be fastened to an appropriate base**, to prevent tipping over.
- Check that all connectors are seated correctly. False connections can cause irreparable damage, not covered by warranty.
- Verify voltage specifications stated on type plate, before connecting to a main power socket. Machine must be connected to a **grounded** main power socket.
- Read the Service Manual carefully before operating the machine.

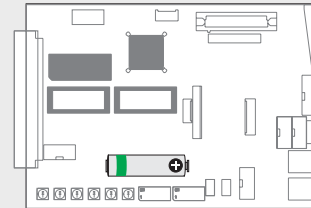
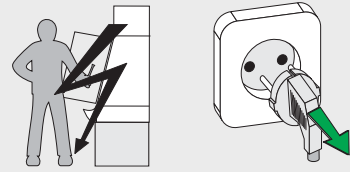
Continued on next page...



Safety Instructions

Precautions during Service and Maintenance

- Only qualified service personnel should perform repairs.
- Unplug from the main power socket, before working on the machine. The power cable must be disconnected from the main power socket, before the machine is free from electrical current.
- Electronic assemblies should only be changed with the power switched off.
- Use only original Atronic parts for replacement.
- Atronic Commboard
Danger of explosion if battery is incorrectly replaced! Check for correct polarity and replace with the same or equivalent type only!
- Please refer to the Atronic Service Manual CD for further instructions on service and maintenance.

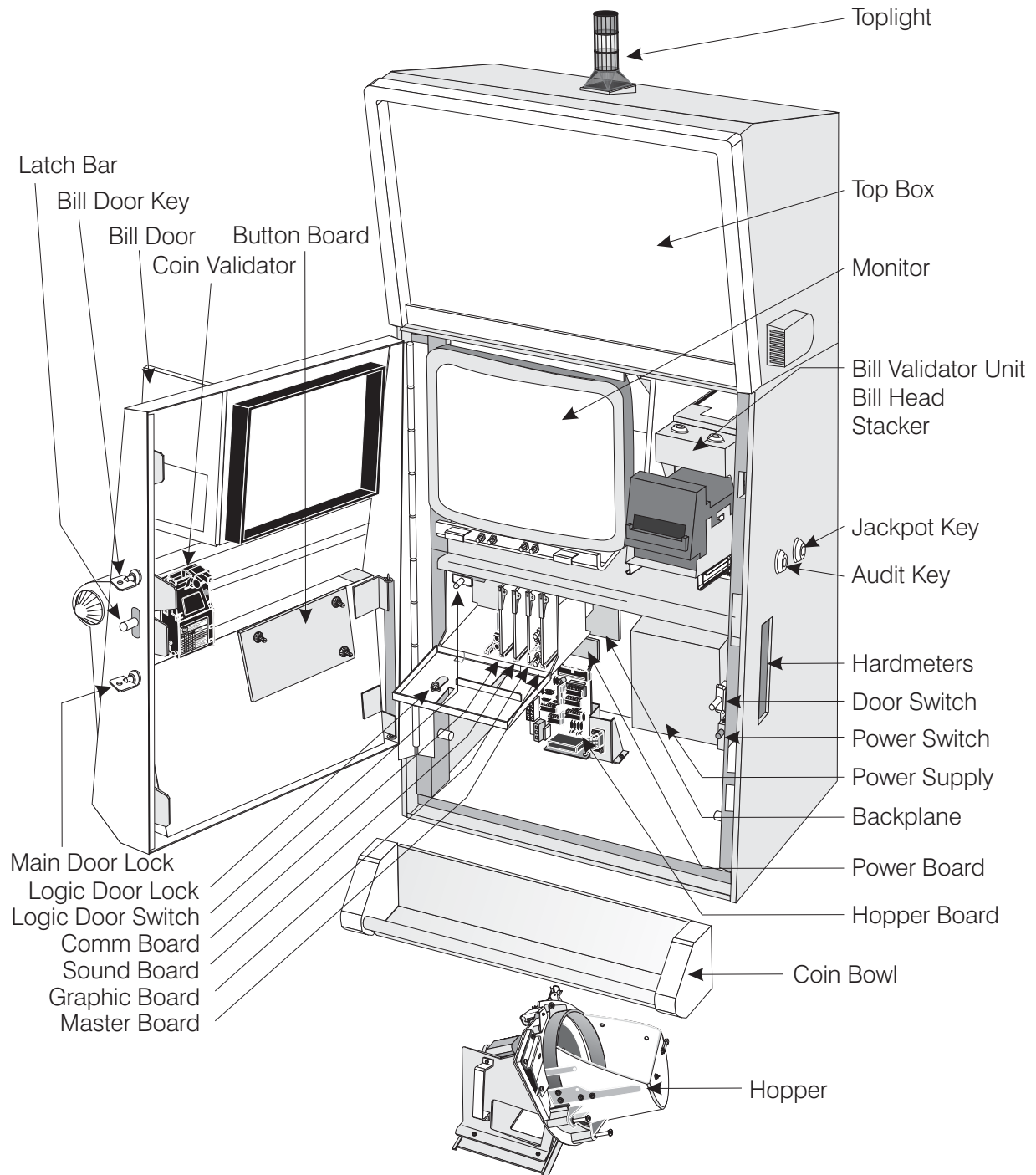


Additional Information

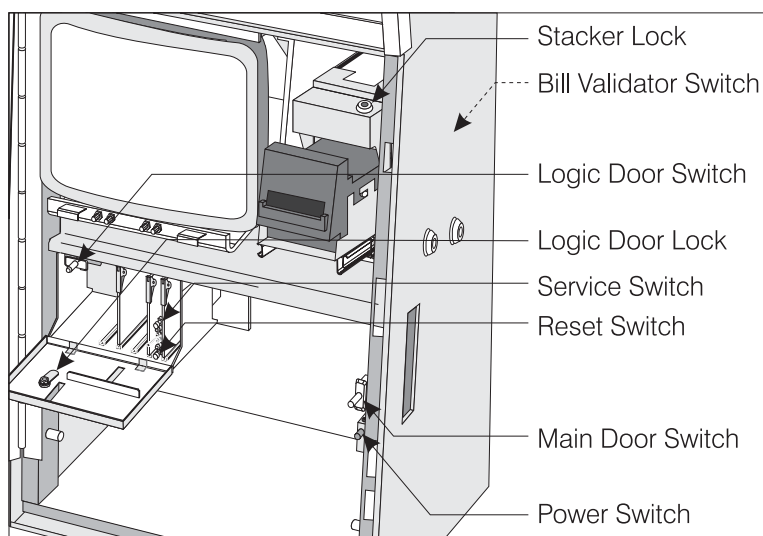
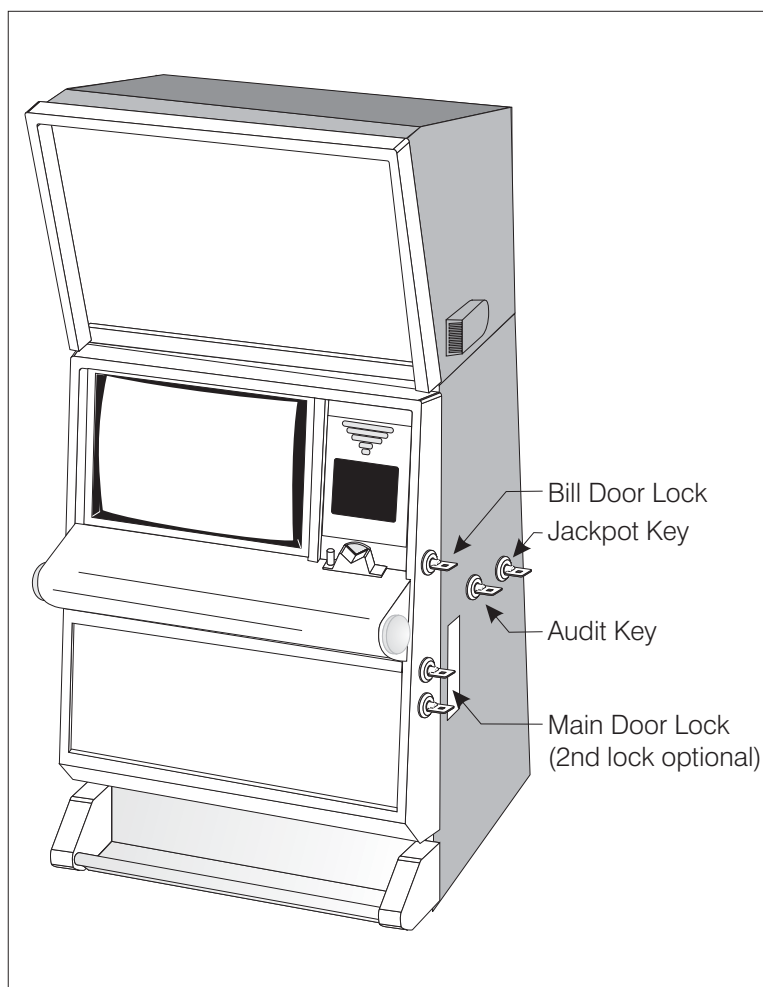
The X-rays, which develop in this machine, are sufficiently shielded through the Cathode-ray tube's own shielding. Max 24-24,5kV, Beam current max 630mA. This corresponds with Paragraph 5 of the German X-ray Orders from 1987.

- blank page -

MACHINE COMPONENTS



LOCKS, KEYS AND SWITCHES



Audit Key

This key activates the Audit Menu and illuminates hardmeters. It also clears status and error messages.

Jackpot Key

Jackpot events and hand pay administration are controlled by this key. It also controls remote credit function (if applicable).

Bill Door Lock

Unlocking the bill door allows the validator and stacker to be removed without unlocking the main door.

Main Door Lock

Allows access to the machine components via main door.

Stacker Locks

Unlock stacker locks to remove the stacker (bill box).

Bill Validator Switch

Removal of the validator and stacker is detected by this switch.

Logic Door Lock and Switch

Unlock logic door lock to get access to the boards. The (optional) logic door switch detects logic box openings.

Service Button (Green)

Pressing the service switch activates the Service Menu.

Reset Button (Red)

Used for resetting the machine and clearing the machines memory.

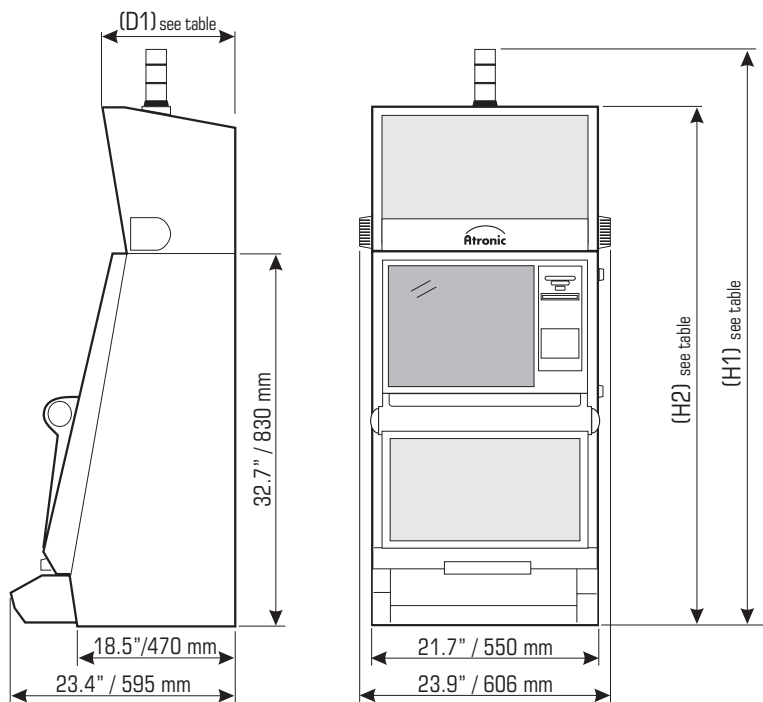
Main Door Switch

Registers all main door openings.

Power Switch (Red)

Switches power supply on/off

DIMENSIONS



Dimensions depend on installed top box model and toplight (candle) version. Use the table below to figure out actual dimensions.

	H1 (Overall height)	H2 (Height wo candle)	D1 (Top box depth)
Square Top with 3 element candle	55.3" / 1405 mm	48.8" / 1240 mm	17.1" / 435 mm
Square Top with 2 element candle	53.6" / 1362 mm	48.8" / 1240 mm	17.1" / 435 mm
Round Top with 3 element candle	56" / 1423 mm	48.8" / 1240 mm	14.8" / 376 mm
Round Top with 2 element candle	54.3" / 1380 mm	48.8" / 1240 mm	14.8" / 376 mm
Low Top with 3 element candle	50.7" / 1289 mm	43.6" / 1114 mm	16.1" / 410 mm
Low Top with 2 element candle	49" / 1246 mm	43.6" / 1114 mm	16.1" / 410 mm

Approximately values

DIMENSIONS

Cashline WBC Cabinet

Weight: approx. 220 lbs. / 100 Kg

Drawing shows WBC cabinet with Square Top and 3 element candle.

Note:

Table refers to recent cabinets utilizing Top Boxes with 3" (system) brackets. Older cabinets utilizing Top Boxes with 2,5" brackets are slightly lower.

TECHNICAL DATA

TECHNICAL DATA

Electrical Specifications

Required Voltage: 220V-240V, 2.0A, 50Hz
100V-120V, 4.0A, 60Hz

Power Consumption
Idle mode: approx. 185W
1.60A / 115V, 0.8A / 230V
Payout mode: approx. 200W
1.75A / 115V, 0.9A / 230V

Power Supply
Secondary Voltage: + 24V / 4A
+ 12V / 4A
- 12V / 0.3A
+ 5V / 10A

Fuses

Power Supply: F 5A / 250V
Monitor: T 3A / 250V
Power Board: T 2A / 250V

Backplane F1: + 5V T 5A / 250V
Backplane F2: + 12V T 5A / 250V
Backplane F3: - 12V T 0.315A / 250V
Backplane F4: + 24V T 3.15A / 250V

Lamps

Fluorescent Lamps: 15W, 17" / 438 mm
Button Lamps, small LED
Button Lamps, large LED

Environmental Specifications

Operating Temperature: 32°F / 0°C - 113°F / 45°C
Operating Humidity: 0% to 85%

Combustible Weight: < 20 lbs. / 9 Kg

Primary Voltage

Secondary Voltage

Primary Fuses

Secondary Fuses

Suggested Limits

- blank page -

MACHINE INSTALLATION - OVERVIEW

This section should only be carried out by
Qualified Technical Service Personnel.

Review the list below and perform as needed. Explanations are located on the following pages and in additional manuals.

- ☐ Inspect machines for transport damage. Any transport damage should be noted and witnessed by the freight forwarder. The manufacturer accepts no responsibility for transport damage.
- ☐ Check machines for the correct Paytable, Glasses, Hardware configuration and that Software EPROMs are correctly installed on the PCBs.
- ☐ Prepare the base by drilling the mounting holes. Use the Atronic drilling template for proper mounting hole placement.
- ☐ Place and mount the machine to the base.
- ☐ Run the power cable into the base. Do **not** connect power to the machine.
- ☐ Install the Toplight.
- ☐ Replace shipping locks with Casino specific locks.
- ☐ Install and connect Online/Accounting system.
- ☐ Check that all internal and external connections are seated correctly.
- ☐ Prepare Coin Comparator and Hopper.
- ☐ Apply power to the machine.
- ☐ Load paper into the Printer.
- ☐ Execute basic machine setup (Initial Setup)
- ☐ Configure game.
- ☐ Test Bill and Coin handling.

Note:

Depending on machine configuration and/or jurisdictional requirements, additional tasks may have to be carried out before the machine can be put into operation (e.g. acceptance inspection, logicbox sealing, etc.).

MACHINE INSTALLATION

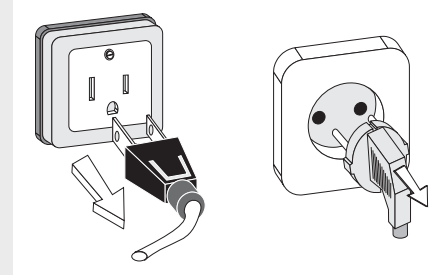
Following pages contain a description of machine fitting and commissioning. We recommend to follow all *cross-references* to get the necessary information.

Precautions



Caution! High Voltage

The power cable must be disconnected from the main power socket, before the machine is free from electrical current. The main power switch is intended for service purposes only.



Prepare bases for machine mounting

Prepare the base stand by drilling the mounting holes. Use the Atronic WBC Drilling Template for hole placement. Leave enough space between two machines. The main door should open without touching the next machine and the key switches should be easy to access.

If the WBC Drilling Template is not at hand, please use the drawing on the next page.

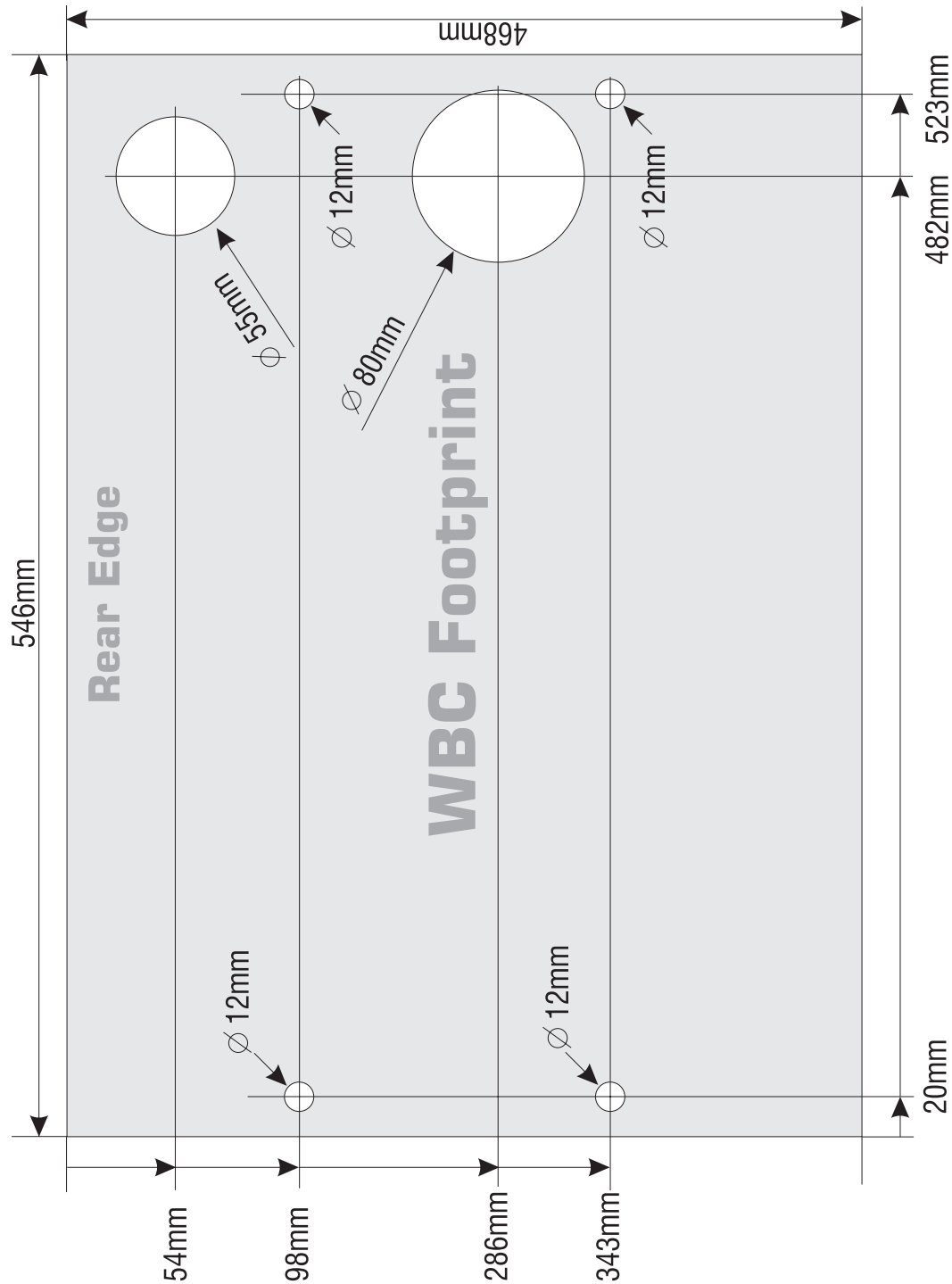
Mount machine on base

- Lift the machine onto the base stand (with the main cable inside the cabinet) and align the cabinet with the drilled holes.
- Fix it with the 4 round head square neck bolts M8x80 DIN603, washers and wingnuts, delivered with the machine.
- Run the main cable into the base.
Do not yet connect main cable to power outlet!
Do not yet apply power to the machine!

Note:

The machine weighs about 100kg (220 lb). At least two persons should carry or lift it.

DRILLING TEMPLATE



Note: Footprint is without coinbowl.

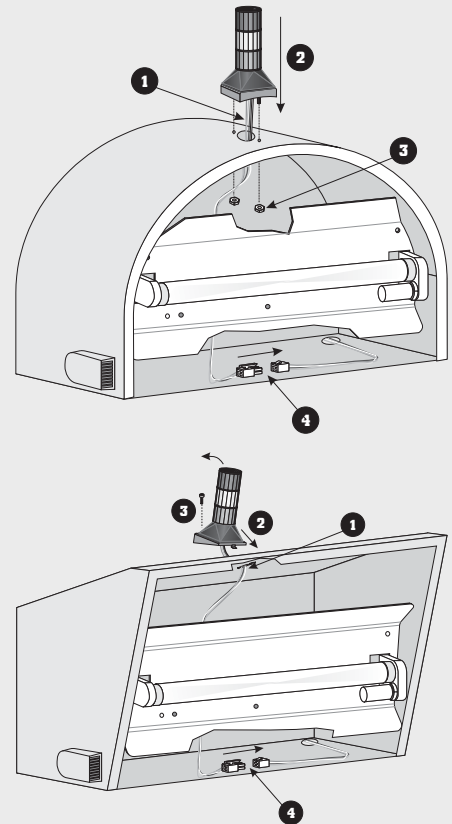


Make sure to leave min. 180mm (7.1") distance to the next machine or a wall on both sides of the cabinet.

MACHINE INSTALLATION

Install Toplight

- Remove the top glass.
- Remove the lighting reflector panel by loosening the 4 screws and disconnect the power cable.
- Run the toplight harness through the opening on top of the top box (1).
- Fix the toplight to the top box (2) and secure it with one nut (square top model) or two nuts (round top and low top models) (3).
- Connect the toplight Molex connector (4).
- Reinstall the lighting reflector panel and connect its power cable.



Replace shipping locks

If not ordered otherwise, Atronic machines are equipped with shipping locks for easy commissioning. These locks have to be replaced by casino specific locks to provide appropriate security.

MACHINE INSTALLATION

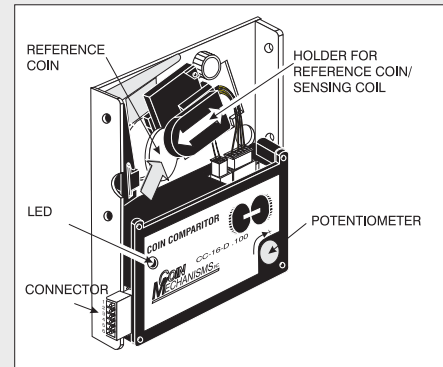
Prepare Coin Comparitor CC16/MC16

- Slide the reference coin holder rightwards, remove the (plastic) transport token and replace it with an appropriate reference coin or casino token.
- Fine tune the coin comparitor (if necessary) later when machine setup is completed.

Quick guide for fine tuning:

- Turn the potentiometer fully clockwise (all coins are rejected).
- Then turn the potentiometer anti-clockwise until proper coins are accepted and falsified coins are rejected.
- Test acceptance with at least 10 coins and re-adjust, if necessary.

-> See manuals *Peripherals / Coin Acceptors* for details.

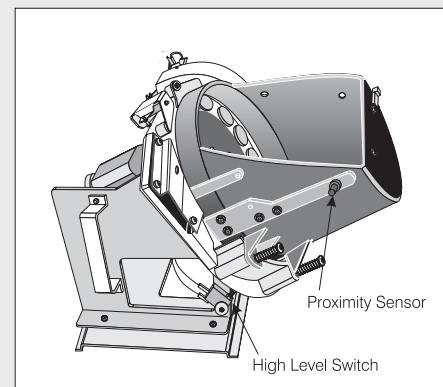


Prepare Hopper

The hopper high level switch detects the filling level of the hopper by the weight of the coins. When the switch is activated, further accepted coins are separated to the drop box. The switching threshold can be altered with an adjustment screw.

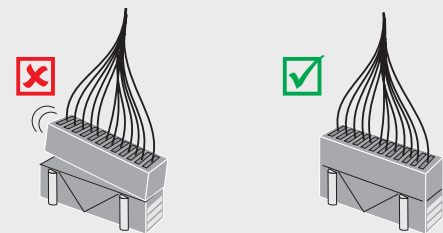
- Fill the hopper with that amount of coins/tokens at which you want the switch to be activated.
- Adjust the switching threshold with the adjustment screw that operates the high level switch.

-> See manuals *Peripherals / Hopper* for details.



Check cable and connectors

Check that all cables and connectors are seated correctly, prior to the first power up. False connections can cause irreparable damage, not covered by warranty.



MACHINE INSTALLATION

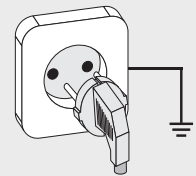
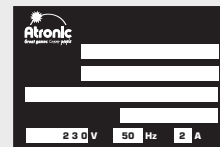
Check Commboard Settings (optional)

The commboard DIP switches and rotary switches configure SAS address, APL address, progressive mode and SAS (dual) channel allocation.

Use the DIP switch tables within the Software Manual for a particular software version (e.g. P-Level) to check or alter the commboard settings. Then connect to the online system components.

Apply power

- Verify voltage specifications stated on type plate, before connecting to a main power socket.
- Connect main cable to a **grounded** main power socket, that is capable to deliver the specified current rating.



Switch on the machine

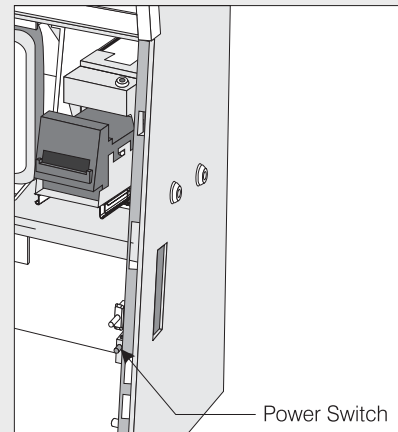
- Press the power switch to switch on the machine. The LED's on the Master Board (they indicate correct voltages) should all be lit.
- To operate the machine while the main door is open, pull the main door switch to set it to closed position.

Execute basic machine setup (if needed)

If any changes to the factory pre-set basic machine setup are needed, further procedures are necessary.

- Init Setup (requires RAM-Reset)
- Selectable Paytable Configuration (requires Config Key EPROM)
- PC-Setup (requires external configuration software)

-> See manual "Software" for details



MACHINE INSTALLATION

Configure game

Configure game settings, which are accessible during normal operation. To access the **Service Menu** open the main door and press the **Service** button at front of the logic box.

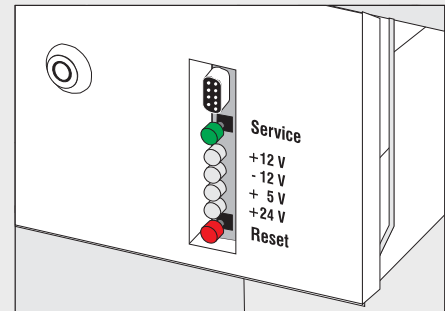
Service Menu has following options:

- Set Clock

Service Menu / Menu Setup has following options:

- Toplight
- Hopper Payout Limit
- Change Language.
- Double Up Setup
- Bills Enabled
- Animation Mode/Sound
- Win Presentation
- Jackpot Music (Volume)
- System Lockup Options
- Voucher Redemption
- Sound Menu (Volume)
- Set Celebration Limit
- Change Token Window
- Denomination Window
- Residual Handling With Card

-> See manual "Operating" for details.



TESTS

Test bill and coin handling

Open maindoor and press service button at front of the logic box. The Service Menu is displayed. Then select **Selftest**.

- Test coin handling.
-> / Optoboard Test
- Test coin diverter.
-> / Coin Diverter Check
- Test bill acceptor
-> / Bill Acceptor Diagnostics

Go back to the Service Menu main page and select **Hopper Out**.

- Test hopper payout and switching times
-> / Hopper Out/

Run HOPPER SWITCH TEST by pressing the left lit button for 4 sec. Hopper will perform a coin out until it is empty or the reset Button is pressed. The switching period values (in msec) are displayed. If any of the values is below 12 msec the Hopper count switch has to be re-adjusted. See manual Peripherals/Hopper for details.

-> See manual "Operating" for details.

Note:

*Make sure to have stacker lock keys and the cashbox keys at your hands, when performing a "Validator Test **with** Stacking".*

TECHNICAL SUPPORT TELEPHONE NUMBERS

Atronic offers and provides technical support 24 hours a day, 7 days a week. If technical assistance is required during normal business hours, please contact your local technical services representative at one of the numbers below. If technical assistance is required outside of normal business hours, please contact one of the Atronic Technical Hotline numbers below.

Technical Support Locations:

Atronic Germany (International Headquarter)	(+49) 5741 273 720
Atronic Peru	(+51) 161 832 00
Atronic United Kingdom	(+44) 1727 855 966
Atronic Russia	(+7) 495 7377 299

Atronic Technical Hotline numbers:

For technical assistance in Europe, South Africa, Asia, Central and South America outside of normal business hours:	(+49) 5741 273 777
---	--------------------