



09300019
DAMPER WEIGHT RECOMMENDATION
For Coin Comparitor®

1/31/12 REV.14

The damper weight is utilized in conjunction with a lever arm in the Comparitor coin chute to bias the falling coin against a reference surface (the rail) in order to closely align the coin with the resident coin so that an accurate comparison can be made by the sensor coils and associated electronics.

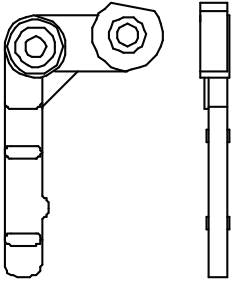
When dealing with small, lightweight coins, which have copper compositions in them, like the US dime, it is recommended that a small mounting stud weight be used such as the mounting stud from the mainplate assembly. This small stud weight versus no weight will prevent other somewhat larger copper composition coins to be accepted as dimes. This condition can be applied to other unwanted coins, which have similar metal alloys and are slightly larger in diameter.

To establish a repeatable test for damper weight specifications, the chart below was determined by dropping coins from a "static" position at the coin entry. A minimum weight coin was determined to overcome and pivot the damper lever when let go from this static position. This minimum weight established the coin weight range for each damper weight assembly.

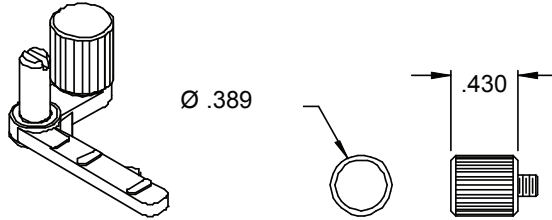
In real in-situ applications the initial height of the falling coin, and therefore its speed and striking force on the lever, will have differing consequences on the Comparitor's performance for accepting valid coins and rejecting fraud coins. In some cases, excessive rejection of valid coins may be remedied by using the next higher damper weight. However, using too heavy of a weight can slow the coin significantly to where it will be rejected because of a time out. This chart was established as a guideline only and may be deviated from for special coin / token and machine circumstances.

Coin Weight Range in grams	Typical coin used	Damper Weight Assembly No.	Weight Only
1.5 to 1.9	Small coins / Tokens	06660024	No Weight
1.5 to 1.9	Thin coins / Tokens	06660124	No Weight
2.0 to 2.9	1¢, 10¢	06660051	0.7 grams
2.0 to 2.9	Small, thin foreign coins	06660122	0.7 grams
3.0 to 4.4	5¢ , 25¢	06660012	2.6 grams
3.0 to 4.4	5¢, 10¢, 25¢ Thin coin	06660111	2.6 grams
4.5 to 5.0	Canadian 25¢	06660101	4.0 grams
4.5 to 5.0	5¢, 10¢, 25¢ Thin coin	06660117	4.0 grams
5.0 to 8.5	25¢, Token	06660013	6.0 grams
5.0 to 8.5	Small, thin foreign coins	06660115	6.0 grams
8.5 to 10.0	Canadian \$1	06660102	9.0 grams
8.5 to 10.0	Thin coins / Tokens	06660123	9.0 grams
10.0 to 10.5	Special coins	06660056	10.6 grams
10.5 to 11.0	Australian/U.S. Dollar	06660046	12.0 grams
11.0 and greater	50¢ / \$ Game Tokens	06660014	14.2 grams
11.0 and greater	1.50" and up dia. only	06660076	14.2 grams
11.0 and greater	1.455 – 1.475 Casino \$1	06660120	14.2 grams

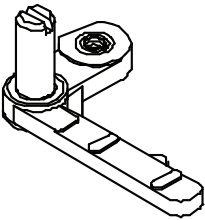
Standard coin damper levers



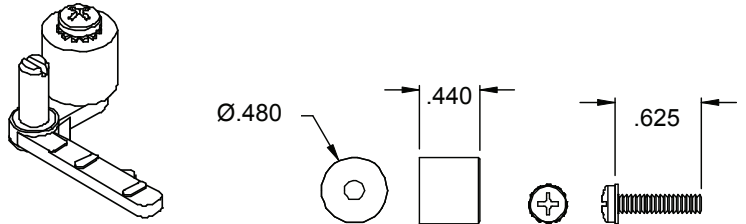
P/N 05660021 (BLACK)
 USED ON STANDARD
 COIN OR MICRO
 COMPARITORS



6.0 GRAM ASSY P/N 04060039-01
 P/N 06660013 WEIGHT, DAMPER, 6.0
 DAMPER LEVER GRAM - CLEAR FINISH
 P/N 05660021

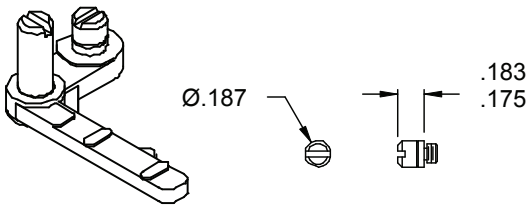


NO WEIGHT
 P/N 06660024
 DAMPER LEVER
 P/N 05660021

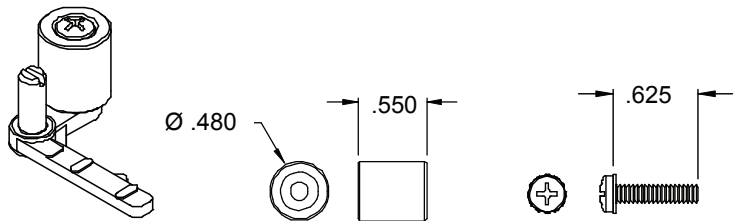


9.0 GRAM ASSY P/N 04060083-02
 P/N 06660102 WEIGHT, DAMPER, 9.0 GRAM
 DAMPER LEVER YELLOW FINISH
 P/N 05660021

P/N P-166-6-10
 SCREW, 6-32 X 5/8,
 PHIL, PH, W/SEMS

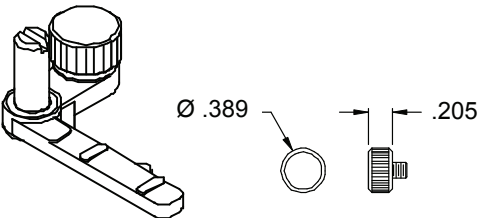


0.7 GRAM ASSY P/N 04060005-01
 P/N 06660051 STUD, #6 MTG, 0.7 GRAM
 DAMPER LEVER CLEAR FINISH
 P/N 05660021

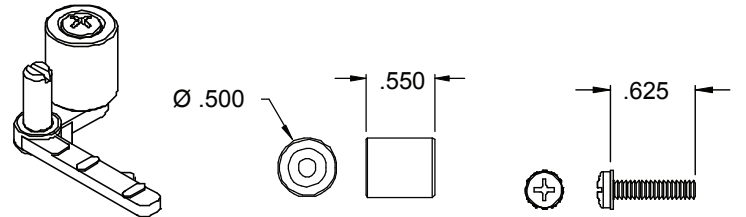


10.6 GRAM ASSY P/N 04060081-02
 P/N 06660056 WEIGHT, DAMPER, 10.6 GRAM
 DAMPER LEVER YELLOW FINISH
 P/N 05660021

P/N P-166-6-10
 SCREW, 6-32 X 5/8,
 PHIL, PH, W/SEMS

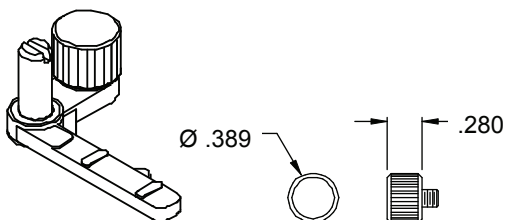


2.6G ASSY P/N 04060038-01
 P/N 06660012 WEIGHT, DAMPER, 2.6
 DAMPER LEVER GRAM - CLEAR FINISH
 P/N 05660021

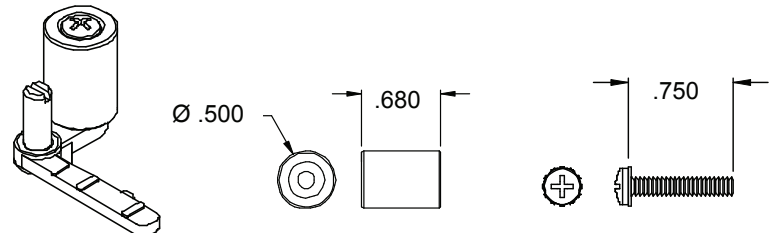


12.0 GRAM ASSY P/N 04060080-02
 P/N 06660046 WEIGHT, DAMPER, 12 GRAM
 DAMPER LEVER YELLOW FINISH
 P/N 05660021

P/N P-166-6-10
 SCREW, 6-32 X 5/8,
 PHIL, PH, W/SEMS



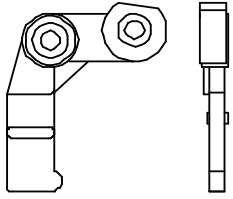
4.0 GRAM ASSY P/N 04060084-02
 P/N 06660101 WEIGHT, DAMPER, 4.0
 DAMPER LEVER GRAM - YELLOW FINISH
 P/N 05660021



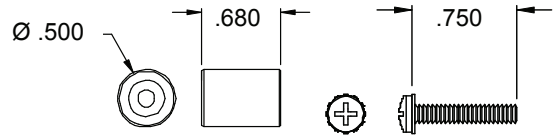
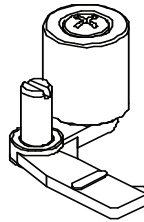
14.2 GRAM ASSY P/N 04060040-01
 P/N 06660014 WEIGHT, DAMPER, 14 GRAM
 DAMPER LEVER CLEAR FINISH
 P/N 05660021

P/N P-166-6-12
 SCREW, 6-32 X 3/4,
 PHIL, PH, W/SEMS

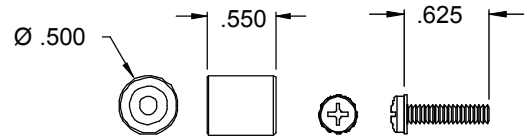
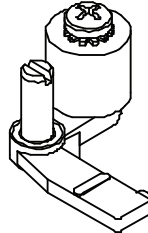
Thick coin damper levers



P/N 05660043 (WHITE)
 USED ON THICK, LARGE
 DIAMETER (GREATER
 THAN Ø1.500")
 COIN OR MICRO
 COMPARITORS
 WB'S, CC-36/37'S

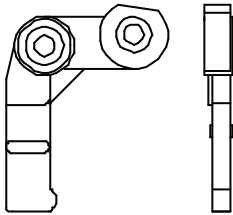


14.2 GRAM ASSY P/N 04060040-01 P/N P-166-6-12
 P/N 06660076 WEIGHT, DAMPER, SCREW, 6-32 X 3/4,
 DAMPER LEVER 14 GRAM PHIL, PH, W/SEMS
 P/N 05660043 CLEAR FINISH

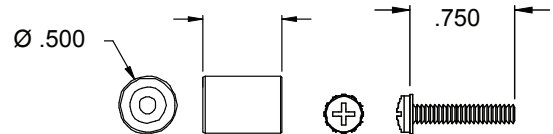
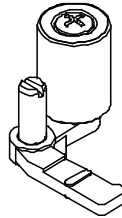


9.0 GRAM ASSY P/N 04060083-02 P/N P-166-6-10
 P/N 06660107 WEIGHT, DAMPER, SCREW, 6-32 X 5/8,
 DAMPER LEVER 9 GRAM PHIL, PH, W/SEMS
 P/N 05660043 YELLOW FINISH

\$1 Game tokens damper levers

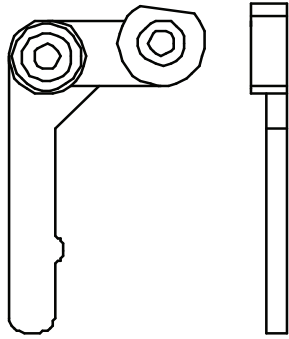


P/N 05660055 (BLACK)
 USED ON U.S. CASINO \$1
 COIN OR MICRO
 COMPARITORS
 CC-16'S, CC-32/33'S, MC'S

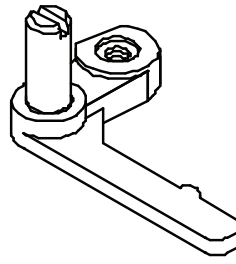


14.2 GRAM ASSY P/N 04060040-01 P/N P-166-6-12
 P/N 06660120 WEIGHT, DAMPER, SCREW, 6-32 X 3/4,
 DAMPER LEVER 14 GRAM PHIL, PH, W/SEMS
 P/N 05660055 CLEAR FINISH

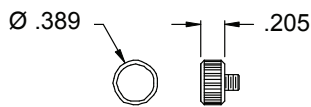
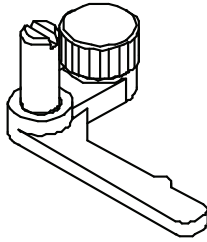
Thin coin damper levers



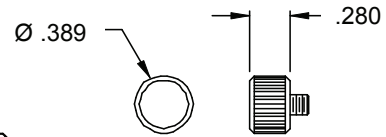
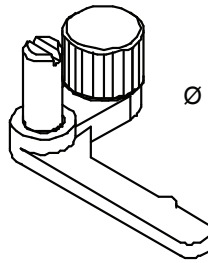
P/N 05660054 (BLACK)
 USED ON *THIN COIN*
 COIN OR MICRO
 COMPARITORS
 5¢, 10¢, 25¢



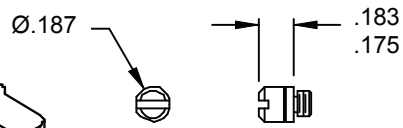
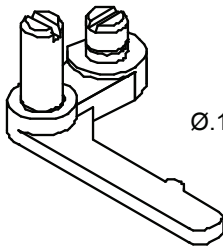
NO WEIGHT
 P/N 06660124
 DAMPER LEVER
 P/N 05660054



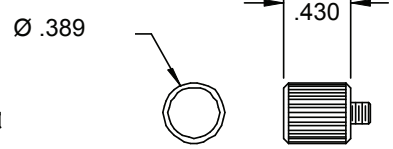
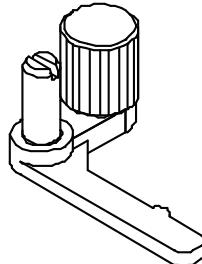
2.6 GRAM ASSY P/N 04060038-01
 P/N 06660111 WEIGHT, DAMPER,
 DAMPER LEVER 2.6 GRAM
 P/N 05660054 CLEAR FINISH



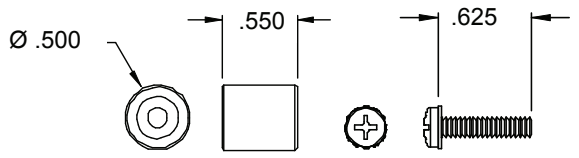
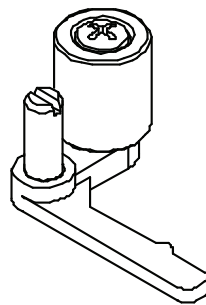
4.0 GRAM ASSY P/N 04060084-02
 P/N 06660117 WEIGHT, DAMPER,
 DAMPER LEVER 4.0 GRAM
 P/N 05660054 YELLOW FINISH



0.7 GRAM ASSY P/N 04060005-01
 P/N 06660122 STUD, #6 MTG, 0.7 GRAM
 DAMPER LEVER CLEAR FINISH
 P/N 05660054



6.0 GRAM ASSY P/N 04060039-01
 P/N 06660115 WEIGHT, DAMPER, 6.0
 DAMPER LEVER GRAM - CLEAR FINISH
 P/N 05660054



9.0 GRAM ASSY P/N 04060083-02
 P/N 06660123 WEIGHT, DAMPER,
 DAMPER LEVER 9 GRAM
 P/N 05660054 YELLOW FINISH
 P/N P-166-6-10
 SCREW, 6-32 X 5/8,
 PHIL, PH, W/SEMS