

WBC Cashline Operation Manual

Atronic Technical Services is proud to introduce the WBC Cashline manual. Atronic's Vision of "Great Games Great People" is a vision which is felt throughout the company. We hope that this manual is a strong illustration of how Atronic Technical Services is committed to making this Vision a reality.

The information in this manual includes the most update information available just prior to print. All part numbers and descriptions have been carefully reviewed and checked for accuracy. All drawings and diagrams contain the latest (newest) revision released by Atronic. If earlier revisions of diagrams or drawings are required, please contact your Atronic Technical Services representative.

Warranty, Disclaimers and Limitations of Liability.

ATRONIC WARRANTS THAT FOR A PERIOD OF ONE NINETY (90) DAYS FROM DATE OF SHIPMENT, PRODUCT PURCHASED HEREUNDER WILL BE FREE FROM DEFECTS AND IN GOOD WORKING ORDER. ATRONIC SHALL PROVIDE REMEDIAL MAINTENANCE, AND SERVICING FOR THE SPECIFIED WARRANTY PERIOD. BUYER'S SOLE AND EXCLUSIVE REMEDY IN THE EVENT OF DEFECT IS EXPRESSLY LIMITED TO THE RESTORATION OF THE PRODUCT TO GOOD WORKING CONDITION BY ADJUSTMENT, REPAIR OR REPLACEMENT OF DEFECTIVE PARTS, AT ATRONIC'S ELECTION. THERE ARE NO OTHER WARRANTIES, EXPRESS OR IMPLIED, INCLUDING, BUT NOT LIMITED TO, WARRANTIES OF MERCHANTABILITY OR FITNESS FOR A PARTICULAR PURPOSE, NO AFFIRMATION OF FACT, INCLUDING, BUT NOT LIMITED TO, STATEMENTS REGARDING SUITABILITY FOR USE OR PERFORMANCE OF THE PRODUCT SHALL BE DEEMED TO BE A WARRANTY OF ATRONIC FOR ANY PURPOSE. IN NO EVENT SHALL ATRONIC BE LIABLE FOR DIRECT, INDIRECT, SPECIAL, OR CONSEQUENTIAL DAMAGES, INCLUDING WITHOUT LIMITATION LOSS OF PROFITS, ARISING OUT OF ANY BREACH OF THIS AGREEMENT. WHETHER SUCH DAMAGES RESULT FROM MALFUNCTION OF MACHINE HARDWARE AND OR SOFTWARE OR FROM ANY OTHER DEFECTS. PRODUCT PURCHASED MAY CONTAIN SOME RECONDITIONED PARTS, WHICH PARTS COME WITH FULL WARRANTY.

WARNING!

The WBC Cashline manual is intended to provide QUALIFIED TECHNICAL PERSONNEL ONLY with the information necessary to routinely maintain, service, and repair the Atronic WBC Cashline Cabinet and components. To avoid personal injury or damage the equipment, do not perform any serving other than that contained in this manual.

NOTE!

Information in this document is subject to change without notice and does not represent a commitment on the part of Atronic. No part of this manual may be reproduced or transmitted in any form or by any means, electronic or mechanical, including photocopying and recording, for any purpose other than the purchaser's personal use without written consent of Atronic.

© Copyright Atronic, 2002. All rights reserved.

Atronic International

Borsigstr. 26

32312 Luebbecke, Germany

(+49) 5741 273 720 FAX (+49) 5741 273 727

Atronic Americas

15500 Greenway-Hayden Loop

Scottsdale, Arizona 85260

(+1) 480 922 0707 FAX (+1) 480 922 8877

Technical Support Telephone numbers

Atronic offers and provides Technical support 24 hours day, 7 days a week. If technical assistance is required during normal business hours contact your local technical services representative at one of the below numbers. If technical assistance is required outside of normal business hours, please contact one of the Atronic Technical Hotline numbers below.

Technical Support Locations:

Atronic Germany (International Headquarters)	(+49) 5741 273 720
Atronic Scottsdale (Americas Headquarters)	(+1) 800 864 7670
Atronic Las Vegas	(+1) 702 270 7775
Atronic Reno	(+1) 775 857 2777
Atronic Mississippi	(+1) 228 604 2773
Atronic Peru	(+51) 1225 6501
Atronic South Africa	(+27) 11 466 2723
Atronic Australia	(+61) 3 9686 1226

Atronic Technical Hotline numbers:

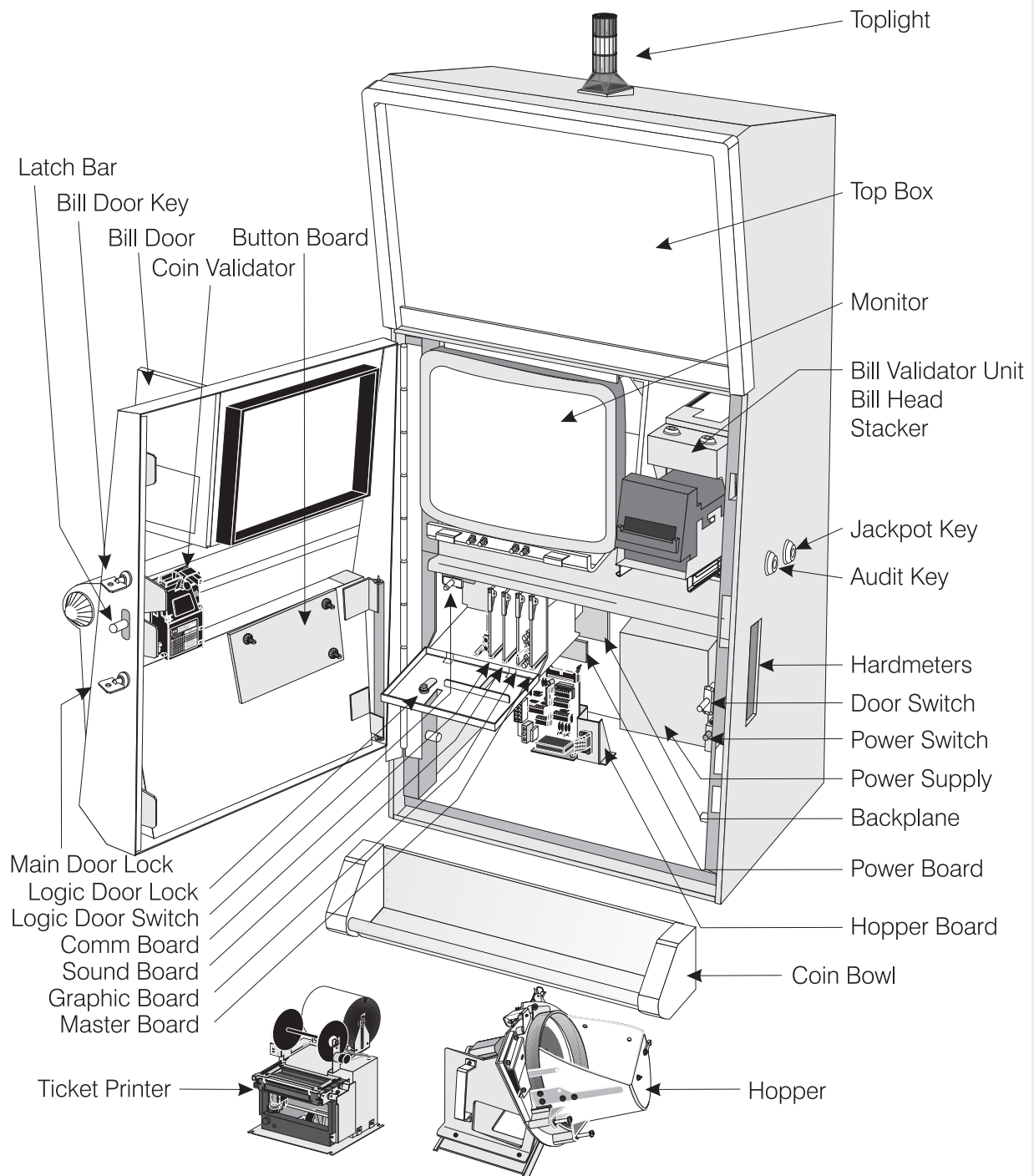
For Technical assistance in North America outside of normal business hours:

(+1) 800 559 1391

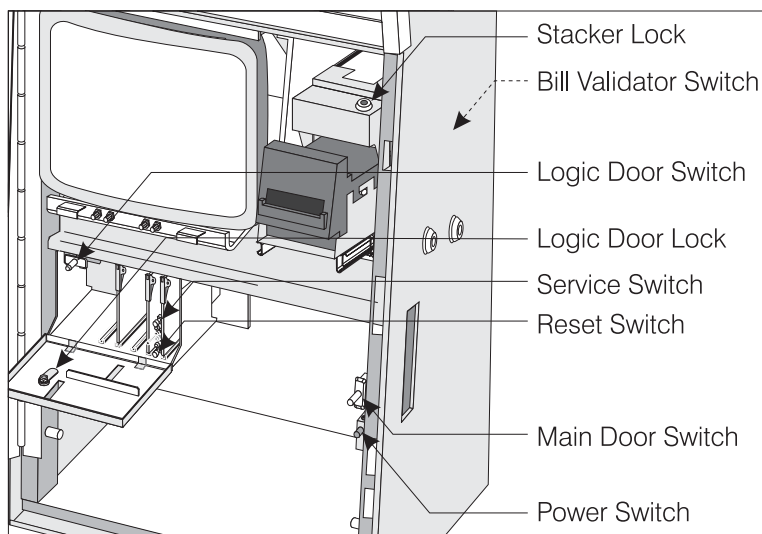
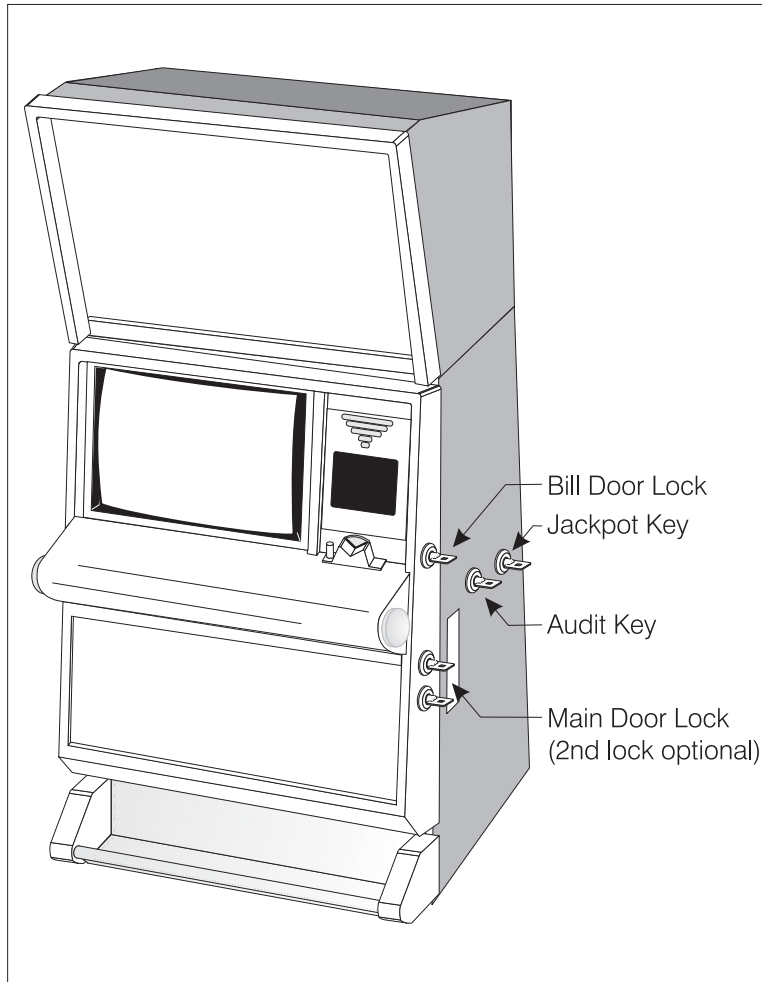
For Technical assistance in Europe, South Africa, South and Central America and Asia, outside of normal business hours:

(+49) 5741 273 777

Machine Components



Locks, Keys and Switches



Audit Key

This key activates the audit menu and illuminates the hardmeters. It also clears status and error messages.

Jackpot Key

Jackpot events and hand pay administration are controlled by this key. It also controls remote credit function (activated by using PC setup).

Bill Door Lock

Unlocking the bill door allows the validator and stacker to be removed without unlocking the main door.

Main Door Lock

Allows access to the machine components via the main door.

Stacker Lock

Enables the stacker to be disconnected from the bill validator.

Bill Validator Switch

Removal of the validator and stacker is detected by this switch.

Logic Door Lock and Switch

The logic box is equipped with both a lock and a detection switch.

Service Switch (Green)

Pressing the service switch activates the service menu.

Reset Switch (Red)

Used for resetting the machine and clearing the machines memory.

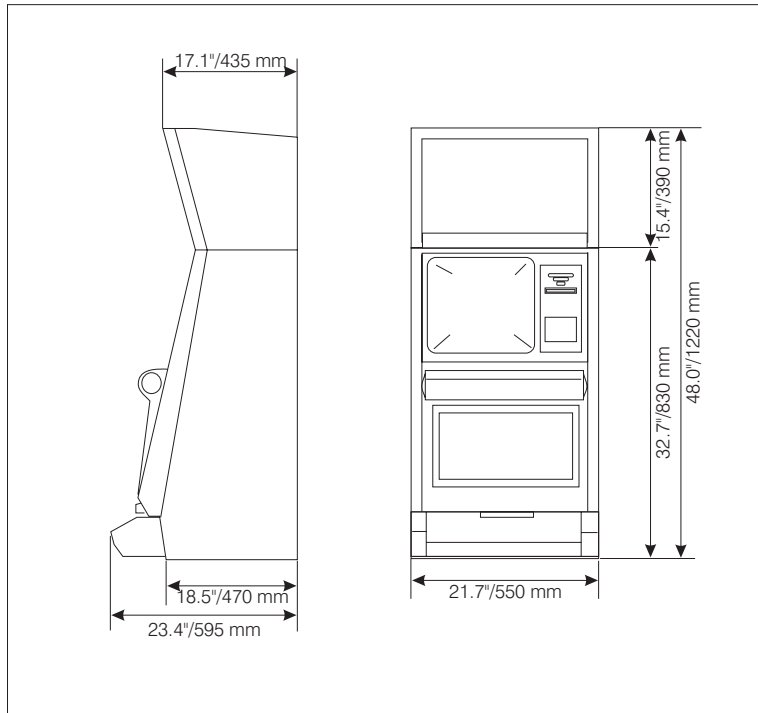
Main Door Switch

Registers all main door openings.

Power Switch (Red)

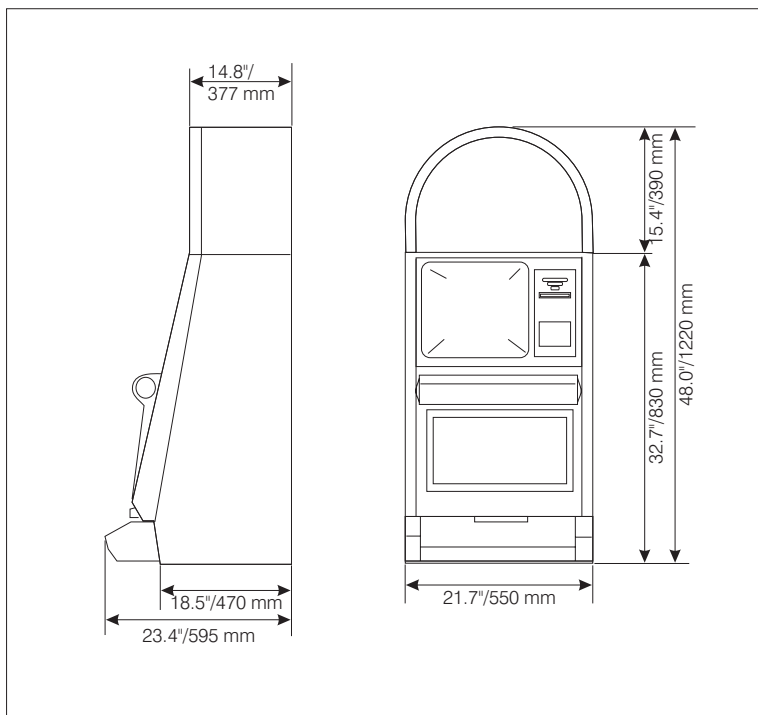
Switches power supply on/off

Dimensions



Cabinet "WBC Cashline" Square Top

Weight: approx 220 lbs./100 Kg
Height: 48.0"/1220 mm
Width: 21.7"/550 mm
Depth: 23.4"/595 mm



Cabinet "WBC Cashline" Round Top

Weight: approx 220 lbs./100 Kg
Height: 48.0"/1220 mm
Width: 21.7"/550 mm
Depth: 23.4"/595 mm



Technical Data

Electrical Specifications

Required Voltage: **220V-240V 2.0A 50Hz**
100V-120V 4.0A 60Hz

Primary Voltage
The correct voltage setting will be selected by the factory.

Power Consumption:

Idle mode: approx 185W ~1.60 AMPS/115 V
~ 0.80 AMPS/230 V

Payout mode: approx 200W ~1.75 AMPS/115 V
~ 0.90 AMPS/230V

Power Supply: **+ 24V/4A**
+ 12V/4A
- 12V/0.3A
+ 5V/10A

Secondary Voltage

Fuses:
Power Supply: **F 5A/250V**
Monitor: **T 3A/250V**
Power board: **T 2A/250V**

Primary Fuses

Backplane F1: + 5V **T 5A/250V**
Backplane F2: + 12V **T 5A/250V**
Backplane F3: - 12V **T 0.315A/250V**
Backplane F4: + 24V **T 3.15A/250V**

Secondary Fuses

Fluorescent Lamps: **15W 17" / 438 mm**

Button Lamps, small **14V/1W**
Button Lamps, large **14V/2W**

Environmental Specifications

Operating Temperature: **32°F / 0°C - 113°F / 45°C**
Operating Humidity: **0% to 85%**

Suggested Limits

Combustible Weight: **< 20 lbs. / 9 Kg**

Transport damage should be noted and witnessed by the freight forwarder. The manufacturer accepts no responsibility for transport damage.

Before the machine is connected to the power source, verify voltage specifications with the label on the side of the machine.

Note!

The **Power cable** must be disconnected from the **Power Outlet** before the machine is free from Electrical current.

The machine may only be operated in **dry conditions** and must be connected to a **grounded power outlet**.

Warning:

Danger of explosion if battery is incorrectly replaced!

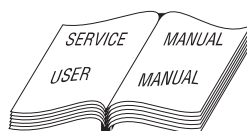
Replace with the same or equivalent type!

Before installation, check that all connectors are seated correctly. False connections can cause irreparable damage, which is not covered by warranty.

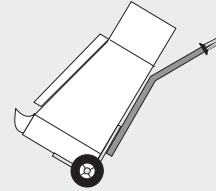
Before working on the machine **disconnect** the Power cable from the Power Outlet.

- **Electronic assemblies** should only be changed with the **Power switched off**.
- Only use **original Atronic parts**.
- **Only Qualified Service Personnel** should carry out repairs.

Before operating the machine read the Service Manual carefully.



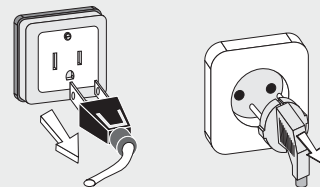
Transport Damage



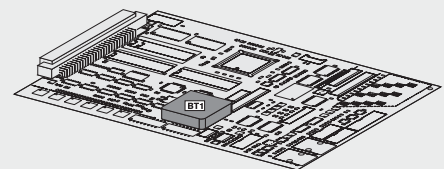
Voltage Specifications



Outlet



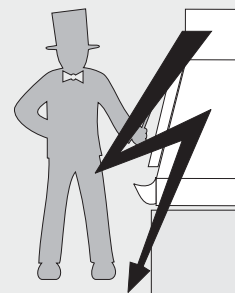
Commboard



Plug Connector



Working on the Machine



Machine Installation

This section should **ONLY** be carried out by **Qualified Technical Service Personnel**.

Depending on the machine configuration and local circumstances, additional tasks may need to be carried out before operating the machine.

Review the list below and perform as needed. Detailed explanations are located on the following pages.

- Inspect machines for transport damage.
- Check machines for the correct Paytable, Glasses, Hardware configuration and that Software EPROMs are correctly installed on the PCBs.
- Prepare the base by drilling the mounting holes. Use the Atronic drilling template for proper mounting hole placement.
- Place and mount the machine on the base.
- Run the power cable into the base. Do not connect power to the machine.
- Install the Toplight.
- Replace shipping locks with Casino specific locks.
- Install and connect Online/Accounting system.
- Check that all internal and external connections are seated correctly.
- Prepare the Coin Comparator and Hopper.
- Apply power to the machine.
- Load paper into the Printer.
- Execute basic machine setup.
- Configure game.
- Test Bill and Coin handling.

Machine Installation cont.

Warning! When power is connected and the machine is switched on, the components within the machine are electrically charged. Even when the machine is switched off, there is still **electrical current** in the machine. The power cable **must** be disconnected from the power outlet before the machine is free from **electrical current**.

DO NOT perform any **unauthorized work** on the machine.

The X-rays, which develop in this machine, are sufficiently shielded through the Cathode-ray tube's own shielding. Max 24-24,5kV, Beam current max 630mA. This corresponds with Paragraph 5 of the German X-ray Orders from 1987.

Mount machine on base

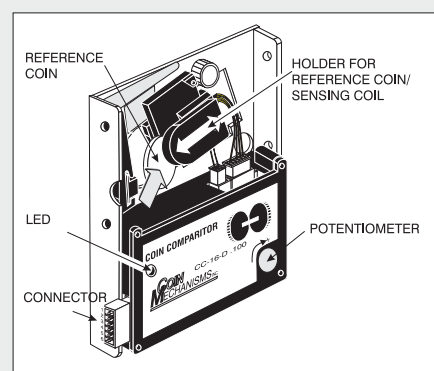
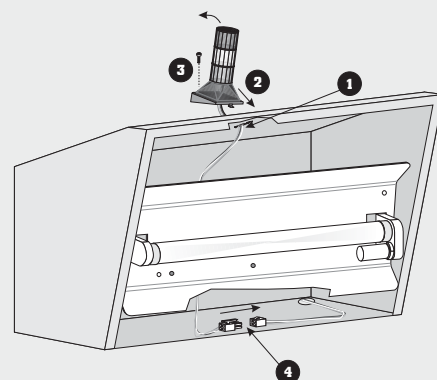
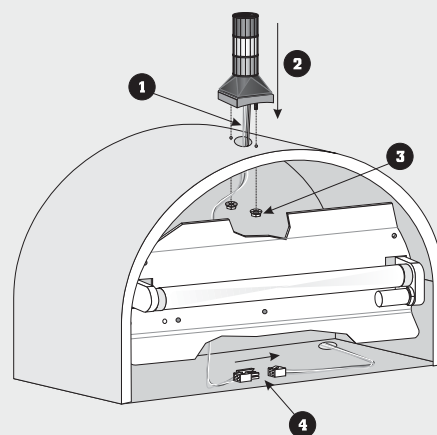
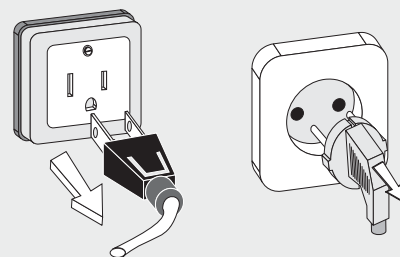
- 4 x M10 hex-head bolts
- 4 x lock washer
- 4 x flat washer
- 4 x M10 hex-nut

Install Toplight

- Remove the Top Glass
- Remove Reflector Panel from the Top box by loosening the 4 screws and disconnect the power cables
- Thread connector and harness through the opening on top of the Top box
- Fix the Toplight onto the Top box and secure with one nut for the Square Top and two nuts for the Round and Low Top
- Connect the Toplight Molex connectors

Prepare Coin Comparitor CC16/CC40

- Remove transport Token
- Insert Casino Coin/Token
- Fine tune the Coin Comparitor



Machine Installation cont.

Prepare Hopper

- Fill the Hopper with the correct amount of Coins/Tokens
- Set High Level Switch where applicable

Load paper into Printer

Apply power

- The LED's on the Master Board (they signify correct voltages) should be lit
- The Monitor powers up

Execute basic machine setup

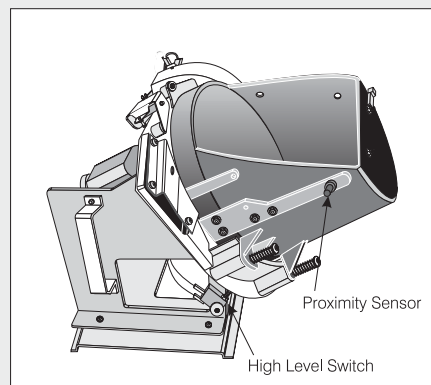
- DIP-Switch settings
- Initial Setup
- Select Paytable
- PC-Setup

Configure game

- Enable and configure game features in the service menu within MENU SETUP

Test Bill and Coin handling

- Check Coin channeling optics
- Test Bill Validator acceptance
- Test Hopper payout



See Printer sections
"Ithaca 750"
"Seiko PSA-66T"
"Westrex 4800"



See section
"Software"



See service menu in
section "Operating"



See service menu in
section "Operating"

Service

Procedures in this section should be carried out by **Trained Casino Personnel**.

Warning !

Only **Qualified Service Technicians** may work on an open machine when the power is switched on. The machine must be switched off when other personnel work on the machine.

Hopper Refill

- Depress the locking spring and slide the Hopper forward
- Fill the Hopper with the correct amount of Coins/Tokens. Check that no Coins/Tokens have fallen into the Cabinet
- Slide the Hopper back into the machine

Stacker Exchange/Removal

- Open Bill Door
- Slide Acceptor enclosure forwards until the Stacker can be accessed
- Unlock the safety Bracket, and exchange/remove Stacker
- Slide the enclosure back and close Bill Door

