

November 2010

# SLOT TECH MAGAZINE

Slot Machine Technology International Casino & Gaming Industry



Slot Tech Magazine

\$10.00

# Evolution

in gaming printers



*Ready for Promotional Couponing  
and Server-Based Games*

*Over 1,200,000 TITO Printers  
Shipped Worldwide*

*50% More Standard Ticket Capacity  
Saves \$200/Printer Annually*

*Paper Waste Eliminated by  
Taking Ticket Stack Down to Last Ticket*

**FutureLogic**  
group of companies  
[futurelogicinc.com](http://futurelogicinc.com)

**G2E Booth  
2431**

Visit our Website to Order Online

[www.kiesub.com](http://www.kiesub.com)

Free Shipping on Qualifying Orders Over \$200 See Website for Details

OPEN SATURDAYS! 9:00 am -3:00pm PDT

## Kiesub Fall Specials!!

New at Kiesub:  
Hi-Brite LED Flex-Lite



- Very flexible and easily curved to any shape
- 3 levels of brightness
- Warm white, pure white, cool white, RGB
- Cut length every 3 LEDs
- 12VDC
- Order 16' or 32' reels or pre-assembled custom lengths
- Available sealed, unsealed or dustproof



Call Kiesub for more information! (800) 544-7007

### Hakko 808 Desoldering Gun

- Portable
- Built-in vacuum pump
- Adjustable temperature control

K808-KIT/P SALE PRICE: \$159.94  
Order online for 1/2 price ground freight!



### Cordless Screwdriver 3.6v with LED Light

- 2 Magnetic insert bits holders
- 11 bits
- Free running time: 30 minutes
- Rechargeable battery

KPT-1136A SALE PRICE: \$19.95



### Isopropyl Alcohol

- Presaturated wipes

K1610-50PK 50/pk \$22.73

### Ultra Pure Duster

- Non-flammable
- Non ozone-depleting
- Odorless

K1671-10S SALE PRICE: \$5.45 ea  
Case of 12: \$4.99 each



### Rayovac RoughNeck LED Flashlight

- 200 lumens!
- Tough and durable
- Spot-to-flood focus
- 3 AAA batteries included

KRNT3AAA-B SALE PRICE: \$23.99



### Xcelite 10" Screwdriver

- Black oxide tip

KXST-1010 #1x10" SALE: \$8.34  
KXST-1020 #2x10" SALE: \$9.34

### Magnetizer/ Demagnetizer

- Magnetize tools and parts
- Demagnetize as needed

K40010 SALE PRICE: \$5.98



(Prices limited to quantities on hand)

### ELECTRONIC PARTS AND SUPPLIES

LEDs, LED BOARDS, LED FLEX-LITE STRIPS

CONTRACT MANUFACTURING

SOLDERING/DESOLDERING EQUIPMENT & SUPPLIES

TOOLS • TEST EQUIPMENT • BATTERY PACKS

CHEMICALS • DUSTER • FIBER OPTIC CABLE

WIRE HARNESES • CUSTOM CABLES

Visit [www.kiesub.com](http://www.kiesub.com) for complete product line list

# KIESUB ELECTRONICS

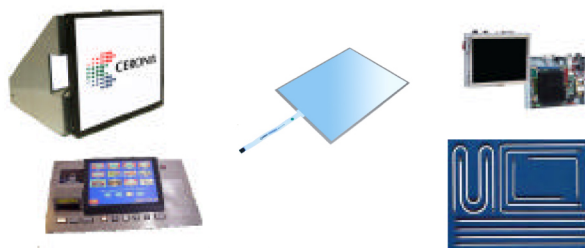
Toll free: 800 544-7007 or 702-733-0024 [info@kiesub.com](mailto:info@kiesub.com)

Fax: 702-733-0026 Visit our website: [www.kiesub.com](http://www.kiesub.com)

3185 S. Highland Dr. Las Vegas, NV 89109

# CasinoTech

INDUSTRIAL MONITORS



## Parts and Service for:



Free warranty Service  
for all Ceronix LCD and  
CRT Monitors

Low cost out of  
warranty service on  
LCDs and CRTs

Expedited Services  
available

Service Info for all  
Ceronix Monitors

CRT Chassis Boards,  
Touch Screens, and  
Controllers

Low Cost replacement  
LCD and CRT Monitors

Retrofit LCD monitors

LCD Panel Repair and  
Backlight Replacement

Player Tracking System  
Displays, Touch  
Screens, and Backlights

Cold Cathode  
Fluorescent Lights for  
Panels and Slot Lamps



## Power Supply Services

CasinoTech is now offering repair service  
on select power supplies used in IGT and  
Aristocrat games. Contact us today to learn  
how we can support you.

Authorized  
Ceronix Service Center  
P: 702.736.8472  
P: 281.255.2884  
F: 702.920.8678

[SALES@CASINOTECH.COM](mailto:SALES@CASINOTECH.COM)  
[www.CASINOTECH.com](http://www.CASINOTECH.com)

**November 2010**

**Page 4-Editorial**

**Page 6-WMS Blue Bird 2 OLED Button Panel**

**Page 17-Atronic and Spielo Join Howie Mandel @ G2E**

**Page 18-Quick & Simple Repairs #68**

**Page 24-TechFest 21 - Sky Ute Casino**

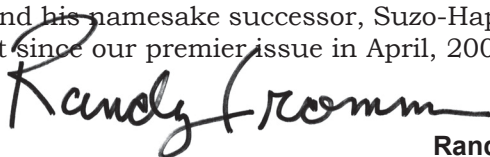
**Page 26-Subscription Form**

Dear Friends,

If you have picked up this copy of Slot Tech Magazine at the Global Gaming Expo, you must be new my publication so let me tell you a little about myself and the magazine you're holding in your hands. Slot Tech Magazine is just what the title implies. We are a monthly trade journal for the international casino industry with a narrow focus on slot machines and an even narrower focus on how to fix them. Slot Tech Magazine is all about slot machine repair. Each month, we present technical articles on the subject. On request, we also conduct slot tech training, on-location, at casinos across the United States. Training programs have also been held in Austria, Germany, Korea and Okinawa. Slot Tech Magazine also sponsors "TechFest," a three day technical conference with presentations from the casino industry's leading technical instructors and factory engineers and representatives. A review of TechFest 21 can be found in this issue. TechFest 22 is planned for Mystic Lake Casino (near Minneapolis, Minnesota) in May of 2011.

As for me, I am a pure geek, nerd, propeller-head, whatever. I have been a professional electronics technician my entire career. When Pong hit the amusement arcades, I was there to fix it when it broke. I have spent more than 30 years in the coin-operated amusement industry as a "pinball mechanic" and began to publish Slot Tech Magazine in 2001 when it became clear that technology had finally caught up to slot machines and they were, at long last, "interesting."

If you need to learn about slot machine repair, please consider subscribing to Slot Tech Magazine. It's just \$60/year to North America. If you have goods or services that you'd like to advertise to the slot departments of just about every casino in the USA, please consider advertising in Slot Tech Magazine. It's as little as \$660 for a full page advertisement when you take an ad each month *as every one of my advertisers does*. The vast majority of my advertisers have supported Slot Tech Magazine since our first year of publication. This kind of support for a little technical magazine is unprecedented in industry and I am deeply grateful for the backing of these huge names in gaming: FutureLogic, 3M Touch Systems, Patriot Gaming, Gary Platt Manufacturing (they sell chairs!) and American Gaming & Electronics as well as the patron saint of Slot Tech Magazine, Frank Happ and his namesake successor, Suzo-Happ for their continued support since our premier issue in April, 2001.



**Randy Fromm - Publisher**  
Slot Tech Magazine



**Randy Fromm**

## Randy Fromm's Slot Tech Magazine

### Editor

Randy Fromm

### Technical Writers

Dean Auger, James Borg,  
Vic Fortenbach, Chuck  
Lentine, Craig Nelson,  
Kevin Noble, Herschel  
Peeler, Pat Porath

Slot Tech Magazine is published  
monthly by  
Slot Tech Magazine  
1944 Falmouth Dr.  
El Cajon, CA 92020-2827  
tel.619.593.6131 fax.619.593.6132  
e-mail editor@slot-techs.com  
Visit the website at slot-techs.com

### SUBSCRIPTIONS

#### Domestic (North America)

1 year - \$60.00

2 years - \$120.00

#### International

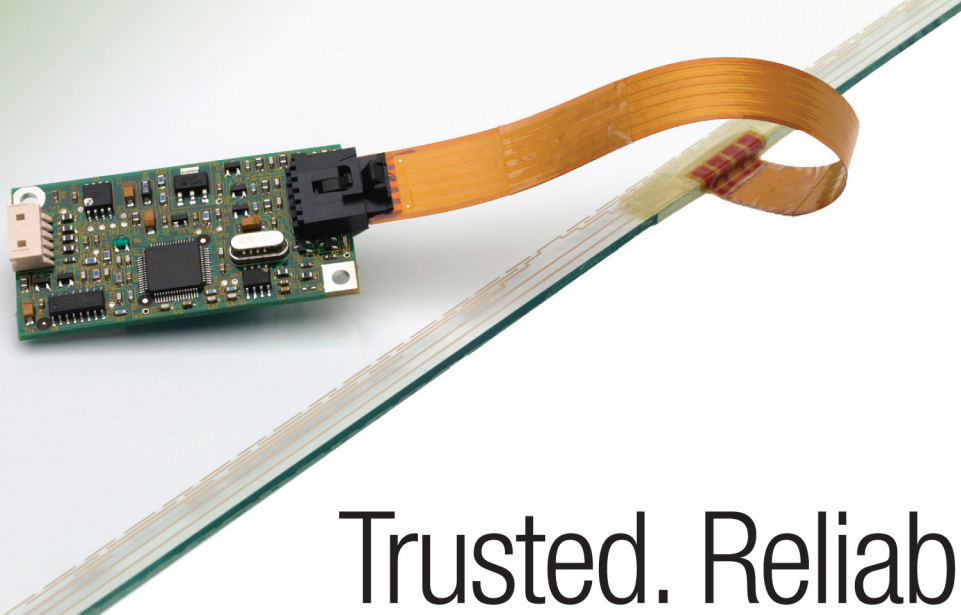
1 year - \$120.00

2 years - \$240.00

Subscribe online at  
[slot-techs.com](http://slot-techs.com)

Copyright 2010 under the Universal  
Copyright Convention. All rights re-  
served.

**TechFest 22**  
**Mystic Lake Casino**  
**May 2011**



# Trusted. Reliable. Available.

## 3M™ MicroTouch™ Touchscreens and Controllers

The gaming machines on your casino floor rely on **3M MicroTouch** touchscreens and controllers to help provide 24/7 operation and up time.

Leading game machine manufacturers have made **3M MicroTouch** touchscreens and controllers the “gaming touch standard” due to their strong track record for performance.

Casino operators rely on manufacturer recommended **3M MicroTouch** replacement parts for “plug and play” integration and the assurance that 3M products “just work” out of the box.

**3M MicroTouch** touchscreens and controllers for your gaming machines are readily available from these authorized gaming distributors.



Information about 3M MicroTouch products is available at [www.3m.com/touch](http://www.3m.com/touch).

Visit [www.youtube.com/3mtouchsystems](http://www.youtube.com/3mtouchsystems) for videos featuring 3M MicroTouch products.





# WMS Blue Bird 2 OLED Button Panel

By Craig Nelson

Disclaimer: The button panel flash program/procedure might not be available in all jurisdictions; please ask your field service representative for details regarding this.

The OLED Button Panel technology is something that is being introduced in some of the latest machine platforms. Companies are moving towards this type of technology for various reasons; the main reason is for simplicity when doing machine changes. Whether it be from a system based (server based) floor management program or manual floor changes (conversions) done by your slot staff, these button panels require little to no configuration

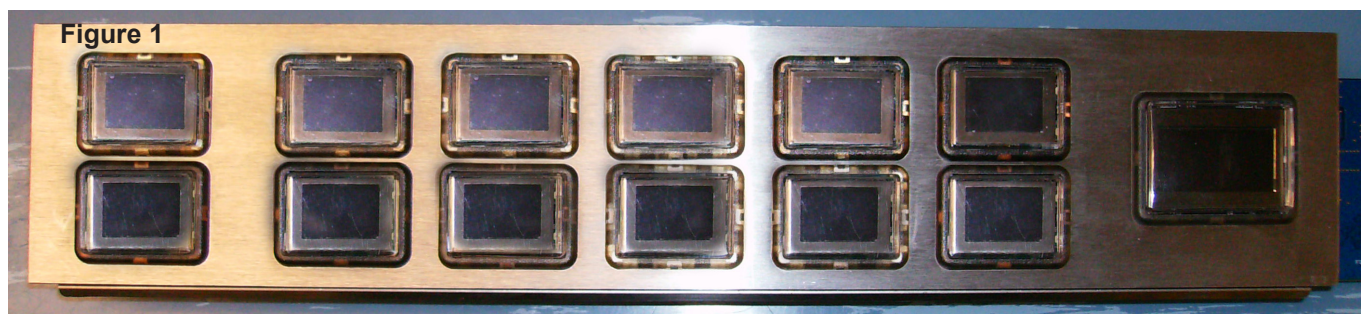
when program changes are made. However, with these leaps in technology also come with some challenges. In this article, you will get instructions on how to maintain the WMS OLED button panels on your gaming floor and flash them with a new program if necessary.

Given the nature of this particular part, wear and tear will be the main factor in them becoming defective. Patrons that use too much force while gaming will break the button actuator or the lens itself. Drink spills cause the most damage to these devices (since they are 90% non-mechanical) and a drink spill can cause a single button OLED module to go bad, multiple OLED module failure, and/or even the OLED controller board itself which can *cost over a thousand dollars to replace*.

If you come upon a machine that has a button or multiple buttons that are distorted, blinking, partially lit up or totally black, you are going to want to check all connections to the button panel and attempt to cycle power on the machine. This may not work but there have been times where one button will just lose communication with the panel controller board. If power cycling does not work, you are going to want to remove the button panel and bring it to your shop for repair.

First of all you are going to need the replacement parts to repair the individual OLED button modules, actuators, and the lens bezels. You can get replacement parts directly from WMS, they are as follows:

OLED Module Kit – Large  
OLED Button Module – Part





Bob Yabroff  
President

“I have always supported Slot Tech Magazine”

“But to tell you the truth, the content of this magazine is gobbledygook to a seating guy like me.”



SLOTS • POKER • TABLE GAMES

**GARY  PLATT**

PERFORMANCE CASINO SEATING

800.969.0999 • [garyplatt.com](http://garyplatt.com)

#20-027113-00-00  
 OLED Module Kit – Small  
 OLED Button Module – Part  
 #20-027114-00-00  
 OLED Actuator Kit – Large  
 Actuator – Part #20-  
 027110-00-00  
 OLED Actuator Kit – Small  
 Actuator – Part #20-  
 027109-00-00  
 OLED Lens Bezel – Large  
 Bezel – Part #20-027111-  
 00-00  
 OLED Lens Bezel – Small  
 Bezel – Part #20-027112-  
 00-00

Note: If the controller board is bad you will need to buy a whole replacement panel.

To replace the OLED button module you will first need to remove the eleven screws on the rear cover.

You will be left with the exposed bottom portion of

that both of those parts just clip in gently. There are no other screws that hold the actual button parts onto the controller board. Gently remove the button module from its socket; if the actuator is not damaged you will not need to remove it to replace the actual module. Figure 4 shows an example of what happens to the button actuators. The actuator on the left is a

force being applied to the button while it is depressed. The symptom of this part being defective would be an inoperable button that is still lit up. For the purpose of this article, both the module and the actuator were removed from the controller board. Once that is complete, it should look like figure 5.

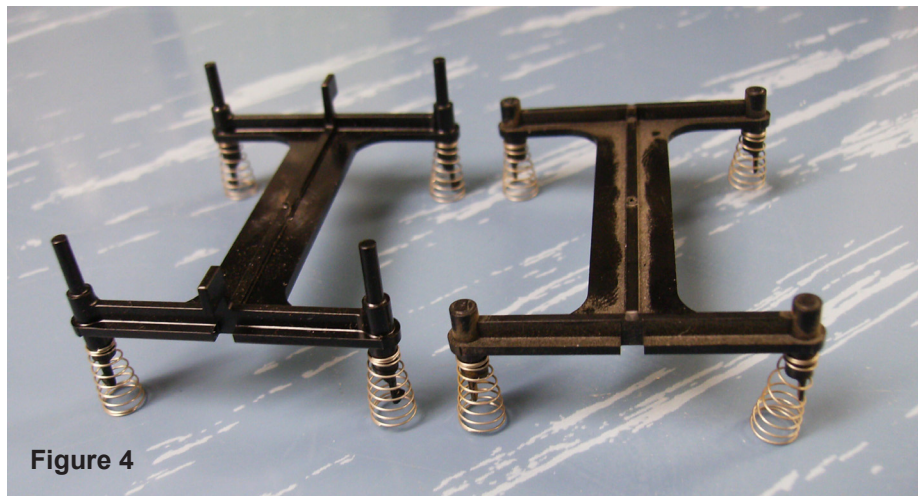


Figure 4

The actuator on the left is a brand new unit that does not have any damage, while the one on the right shows all four posts broken off on the top and the bottom.

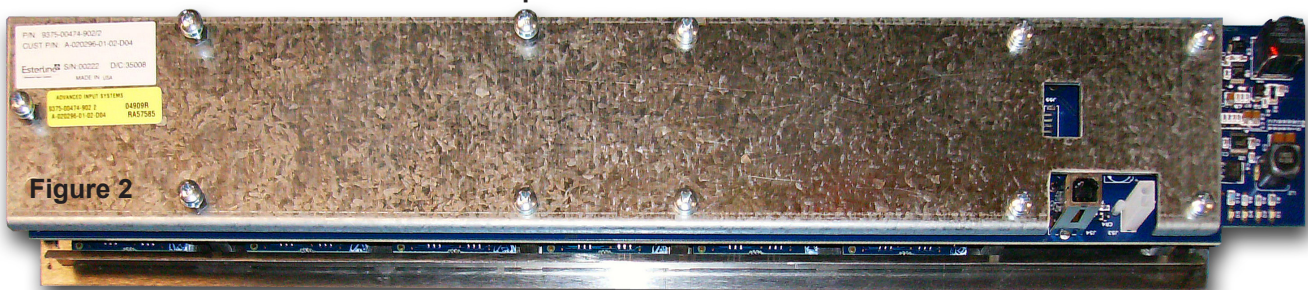


Figure 2

the OLED button panel controller board.

Flip the board over, exposing the button modules and actuators. You will notice

brand new unit that does not have any damage, while the one on the right shows all four posts broken off on the top and the bottom. This is caused by excessive

To replace each part, you just install them in the same fashion as you removed them. The only variation is that on most panels, there is at least one

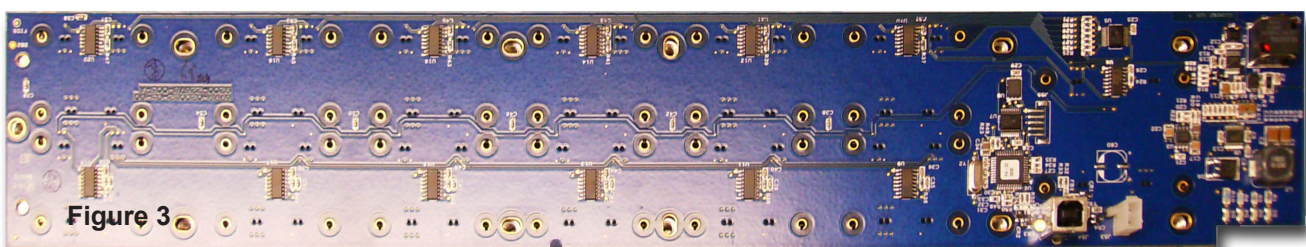


Figure 3

**We Buy  
and Sell Used  
Machines  
and  
Gaming Parts**

**Patriot Gaming has  
product solutions  
to fit every budget.**

**We focus on you the  
customer. To provide the  
very best service and  
products to fit your ever  
changing needs. Our pride  
rests on the fact that we offer  
a wide variety of products  
and alternatives, lower cost  
solutions and top notch  
repair services.**

**One Call...One Voice...  
One Choice!**

**Call Patriot today for your  
FREE Catalog!**

**Service Center**

**• All repairs have a 90 day warranty**

**LCD Retro Kits**  
Authorized Distributor



**Remanufactured  
Bill validators  
Monitors  
Printers  
LCD's**



Authorized Distributor



**Lighting & LED's**



**Buttons & Switches**



**Bill validators**



**Monitors  
Ceronix  
Tatung  
Kristel  
WG  
Tovis  
Kortek**



**TRANSACTION**  
Technologies Incorporated

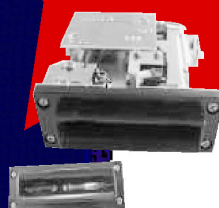
**Printers**



**Cleaning Supplies**



**Used OEM  
Slot parts**



**Seating**



**Repair Center**  
Bill validators  
Monitors  
Printers



**Metal  
Fabrication  
Brackets**



**TRIOT**

**GAMING**

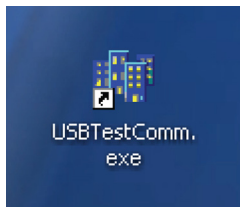
**& ELECTRONICS INC.**

217 N. Lindberg Street • Griffith, Indiana 46319 • Office: 219-922-6400 • Fax: 219-922-6466

large button located on the far right of the panel. The process for replacing these parts is the same as the smaller ones. Note: Be careful with the pins on the module itself as well as the posts on the actuator when removing or installing to avoid further damage to the part or controller board.

The button panel module replacements do not come pre-programmed from the factory so once you are finished replacing the defective component, you will need to program the button(s) to the appropriate firmware which is determined by the Operation System the game is utilizing. Operating Systems may vary based on your jurisdiction however, in most cases, SSOS-000-14xx series operation systems will use Version 2.xx button/controller firmware, while SSOS-000-15xx or greater will use Version 3.xx button/controller firmware to be compatible. Again, refer to your field service tech or the 24 hour hotline for specifics regarding the firmware as it might be different from casino to casino.

The program you will need to flash button panels is called "WMS USB Test



Comm Tool." It is a proprietary program created by WMS that is specifically used

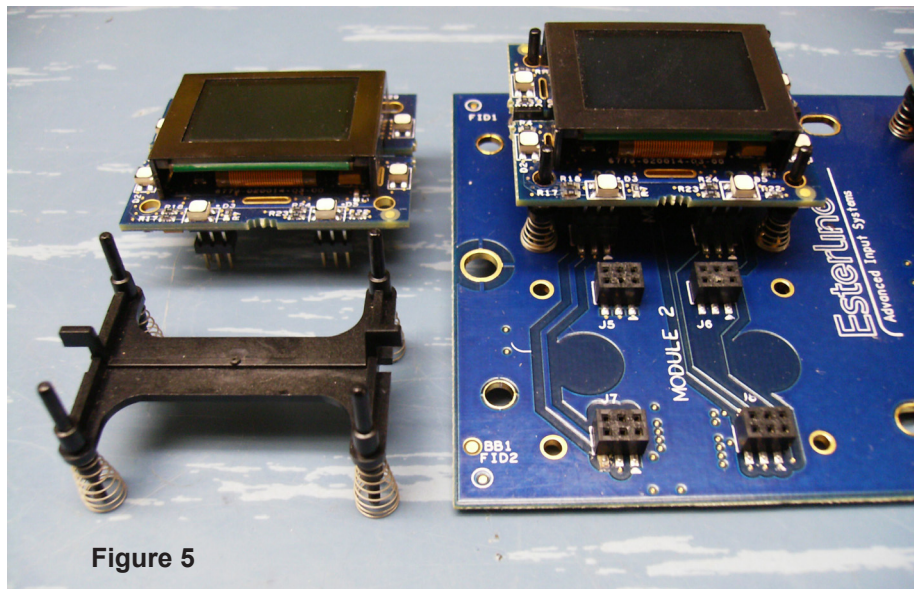
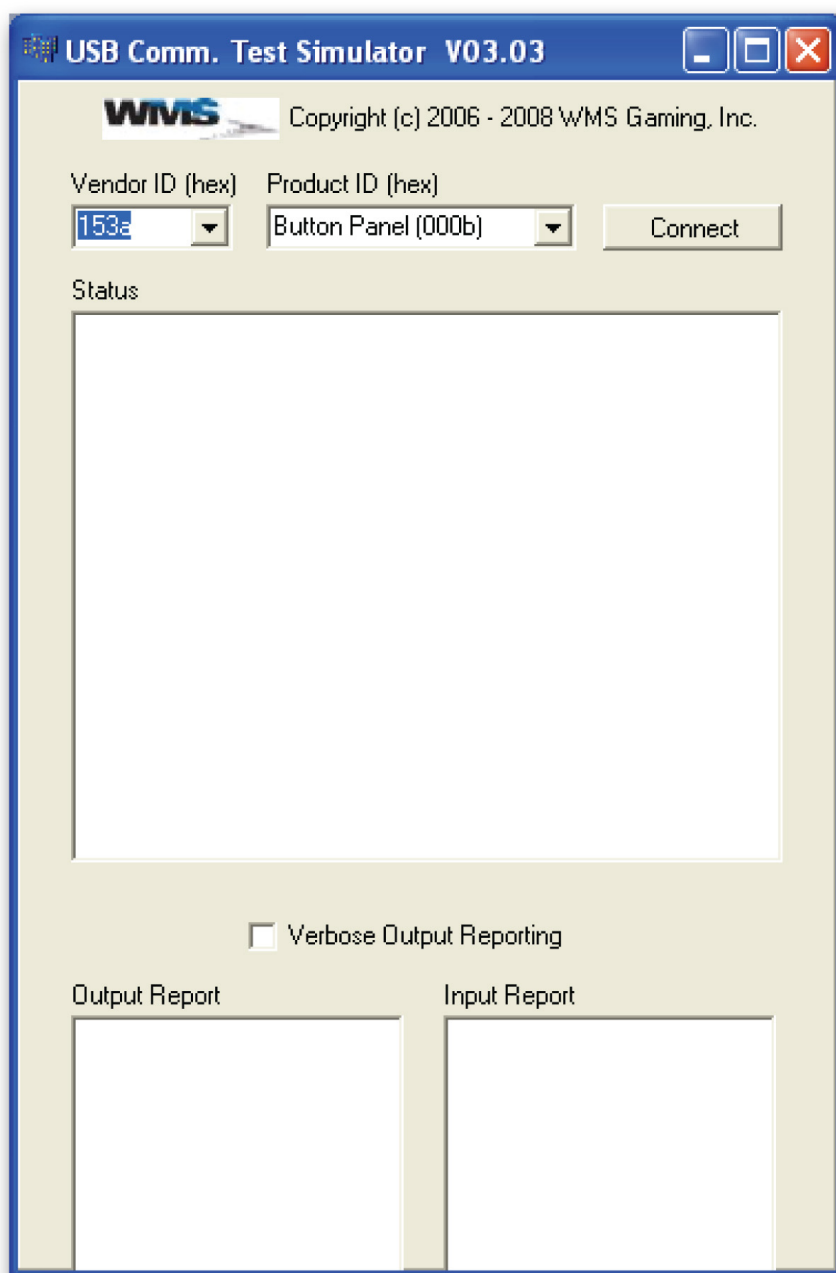


Figure 5



# iVIZION™ IS HERE!

BETTER. SMARTER. FASTER.



CIS TECHNOLOGY



OPTICAL NOTE  
ALIGNMENT



FULL IMAGE  
CAPTURE



ANTI-STRINGING



FASTEST NOTE  
STACKING



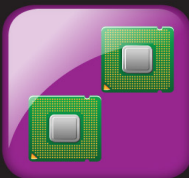
99%+  
ACCEPTANCE



85 MM WIDE  
SEALED BILL PATH



DUST/LIQUID  
RESISTANT



DUAL  
PROCESSORS



SENTRY 2.0 BEZEL



SELF-CALIBRATING



ICB 2.0 WITH RFID



JCMGLOBAL.COM

for programming their OLED button panels. You will need to go through WMS to obtain this program or go to their website [www.wms.com](http://www.wms.com) and then go to their secure site where it is available for customer download.

To program the button panel, you will need to either have it in the game with power applied or you will need to make a jumper harness to hook up to an external power supply. Open the USB test comm tool and then apply power to the button panel with a USB cord attached.

Click the connect button; you should see information pop up in the status box indicating it is connected. You will then click on the radio drop down box and select 'Firmware Download'; you need to do this even if it is highlighted initially. Once you do that, the 'Easy Firmware Download' information will appear in the bottom of box.

When you have established connection with the button panel, you can then select 'Download Controller Firmware.' It will bring you to the folder selection panel where you will then select the firmware version you wish to install. Once you find it, just open it and the program will do the rest. When it is finished, it will indicate that in the download status bar and the version installed will appear

USB Button Panel V03.03 - WMS FS/ML

WMS Copyright (c) 2006-2008 WMS Gaming, Inc.

Command: Firmware Download Button Number: 1 Rate: 1000

Once Continuous

Easy Firmware Download

Download Button Firmware (ALL buttons) Download Controller Firmware

Download Status

Firmware Versions/Hardware Straps

Controller	SBGBTNPANEL V03.01	
Button 1	03.01	Button 9 03.01
Button 2	03.01	Button 10 03.01
Button 3	03.01	Button 11 03.01
Button 4	03.01	Button 12 03.01
Button 5	03.01	Button 13 03.01
Button 6	03.01	Button 14
Button 7	03.01	Button 15
Button 8	03.01	

Get Firmware Versions

Get Hardware Straps, Button Physical Pos Value

NOTE: Get Hardware Straps, Button Physical Pos Value commands supported in v3.00 and greater.

in the box next to 'Controller.' Next, you will need to install the button module firmware (yes, they are separate). To do that, you will just click on 'Download Button Firmware (ALL buttons)' and repeat the same process as the controller firmware. Again, you should see the version in

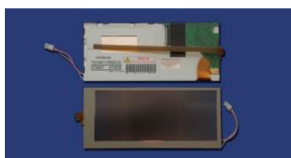
all the boxes by the corresponding button boxes. If the controller and the button firmware match, you are now ready to install the panel.

- Craig Nelson  
[cnelson@slot-techs.com](mailto:cnelson@slot-techs.com)

# PACIFIC ILLUMINATION REPLACEMENT PARTS: COLD CATHODE LAMPS, TOUCH SCREENS, LCD DISPLAYS

PACIFIC ILLUMINATION 949-429-3896 or [pacificillumination@gmail.com](mailto:pacificillumination@gmail.com)

Available now used Hitachi 6.2 inch LCD's #TX16D11VM2CCA for use in Bally IView Player Tracking System, in good working condition, your price \$99



Brand new these sell for \$275 to \$400 so why not save a ton of money and purchase some now for when your existing ones don't work; there are only a limited number of them available so get yours now

[Here are some of our other items](#)

#8520 – Triple cold cathode lamp assembly for WMS Bluebird 18 inch display



#9780 – “L” shape cold cathode lamp assembly for Konami 7 inch bonus screen display



#1010 – 7 inch AU Optronics display for Konami bonus screen

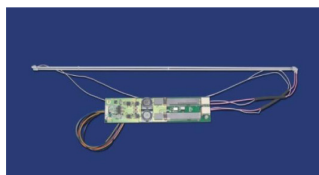


Part #8490 – 6.4 inch LG display for WMS Bluebird bonus screen (touch screen NOT included)

Part #8700 – Dual cold cathode lamp assembly & 12 volt inverter for Konami belly glass edge-lit

Part#9240 – LED edge-lit panel to replace the cold cathode edge-lit belly glass in Konami

Part#9300 – Raw cold cathode lamp for 19 inch display in WMS games



## Pacific Illumination Replacement Parts List

### ARISTOCRAT

- 9440 Single raw cold cathode lamp for 15 inch LCD monitor in Aristocrat games
- 9470 Single raw cold cathode lamp for 17 inch LCD monitor in Aristocrat games
- 9690 Single raw cold cathode lamp for 19 inch LCD monitor in Aristocrat games
- 1110 Single raw cold cathode lamp for 22 inch LCD monitor in Aristocrat games

### ATRONIC

- 8690 Dual cold cathode lamp assembly for Atronic slot machine with 17" LCD monitor
- 9500 Single raw cold cathode lamp for 15 inch LCD monitor in Atronic games
- 9520 Single raw cold cathode lamp for 17 inch LCD monitor in Atronic games
- 9260 Single raw cold cathode lamp for 19 inch LCD monitor in Atronic games

### BALLY

- 1240 Used 6.2" Hitachi LCD #TX16D11VM2CCA with attached 5 wire touch screen for Bally Iview
- 8460 NEW 6.2" Hitachi LCD #TX16D11VM2CCA with attached 5 wire touch screen for Bally I-View
- 8650 Single cold cathode lamp assembly for Bally I-View 6.2 inch "IDW" LCD
- 8680 Single cold cathode lamp assembly for Bally I-View 6.2" Hitachi LCD #TX16D11VM2CCA
- 8950 NEW 5 wire touch screen kit for Bally IView 6.2 inch "IDW" LCD, includes metal base & copper foam grommet
- 9890 NEW 5 wire touch screen for Bally IView 6.2" Hitachi LCD #TX16D11VM2CCA, DOES NOT include metal base or copper foam grommet
- 1060 NEW 5 wire touch screen for Bally IView 6.2" "IDW" brand LCD, DOES NOT include metal base or copper foam grommet
- 8320 Metal housing for Bally Iview "IDW" touch screen
- 1200 Copper foam grommet for the touch screen on Bally IView 6.2" "IDW" brand LCD
- 9800 Single output cold cathode lamp inverter for Bally IView 6.2" "IDW" brand LCD
- 1040 Single output cold cathode lamp inverter for Bally Iview 6.2" Hitachi LCD #TX16D11VM2CCA
- 9190 Protective Mylar sheet for Bally Iview 6.2 inch "IDW" LCD
- 9200 Protective Mylar sheet for Bally IView 6.2" Hitachi LCD #TX16D11VM2CCA
- 1090 Power supply for Bally Iview player tracking system that use the 6.2" "IDW" brand LCD
- 9250 Single raw cold cathode lamp for 15 inch LCD monitor in Bally games
- 9080 Single raw cold cathode lamp for 19 inch LCD monitor in Bally games
- 8770 Single raw cold cathode lamp for 20 inch LCD monitor in Bally games
- 1130 Single raw cold cathode lamp for 22 inch LCD monitor in Bally games
- 1140 Single raw cold cathode lamp for 26 inch LCD monitor in Bally games

### IGT

- 8500 Single cold cathode lamp assembly for IGT NexGen 6.2" Hitachi LCD #TX16D11VM2CAA
- 1430 Single raw cold cathode lamp for IGT NexGen 6.2" Hitachi LCD #TX16D11VM2CAA
- 8610 Protective Mylar sheet for IGT NexGen 6.2 inch Hitachi LCD #TX16D11VM2CAA
- 1400 Single output 5 volt cold cathode lamp inverter for 6.2" IGT NexGen Hitachi LCD #TX16D11VM2CAA
- 8570 NEW 6.2" Hitachi LCD #TX16D11VM2CAA with 4 wire touch screen for IGT NexGen
- 1310 Used 6.2" Hitachi LCD #TX16D11VM2CAA with attached 4 wire touch screen for IGT NexGen
- 9090 Single raw cold cathode lamp for 6.2 inch Hitachi LCD #SX16H005-AZA in 1st generation IGT NexGen
- 9030 Protective Mylar sheet for IGT 1st generation NexGen 6.2" Hitachi LCD #SX16H005-AZA
- 8480 Single raw cold cathode lamp for IGT game with 10" LCD monitor
- 8920 Single raw cold cathode lamp for 15 inch LCD monitor in IGT games
- 9670 Single raw cold cathode lamp for 17 inch LCD monitor in IGT games
- 9290 Single raw cold cathode lamp for 19 inch LCD monitor in IGT games
- 1150 Single raw cold cathode lamp for 20 inch LCD monitor in IGT games
- 1160 Single raw cold cathode lamp for 22 inch LCD monitor in IGT games

### KONAMI

- 8700 Dual cold cathode lamp assembly & 12 volt inverter for Konami belly glass that is edge-lit with cold cathode lamps
- 9870 12 volt dual output cold cathode lamp inverter for Konami belly glass that is edge-lit
- 1260 Dual cold cathode lamp assembly for Konami edge-lit belly glass
- 9240 LED edge- lit panel for belly glass in Konami K2V cabinet
- 8670 Single RAW cold cathode lamp for Konami belly glass that is back-lit with cold cathode lamps
- 9780 "L" shaped cold cathode lamp assembly for Konami 7 inch bonus screen LCD
- 1050 Single raw cold cathode lamp for 15 inch LCD monitor in Konami games
- 8600 Dual cold cathode lamp assembly for Konami slot machine with 17" LCD monitor
- 9680 Single raw cold cathode lamp for 17 inch LCD monitor in Konami games
- 9070 Single raw cold cathode lamp for 19 inch LCD monitor in Konami games
- 1100 Single raw cold cathode lamp for 22 inch LCD monitor in Konami games
- 1010 7 inch AU Optronics LCD #070VW01 for Konami bonus screen
- 1080 Cold cathode lamp inverter for 7" AU Optronics LCD #A070VW01 in Konami bonus screen
- 8550 Single "U" shaped cold cathode lamp assembly for Konami 7" LCD bonus screen
- 8590 Single cold cathode lamp assembly for Konami 1.5 video upright denomination back-lit panel

## Pacific Illumination Replacement Parts List

### MULTIMEDIA

- 9700 Single raw cold cathode lamp for 15 inch LCD monitor in Multimedia games
- 9710 Single raw cold cathode lamp for 17 inch LCD monitor in Multimedia games
- 9720 Single raw cold cathode lamp for 19 inch LCD monitor in Multimedia games
- 9850 Single raw cold cathode lamp for 23 inch LCD monitor in Multi Media games

### SPIELO

- 9740 Single raw cold cathode lamp for 15 inch LCD monitor in Spielo games
- 9750 Single raw cold cathode lamp for 17 inch LCD monitor in Spielo games
- 9760 Single raw cold cathode lamp for 19 inch LCD monitor in Spielo games

### WMS

- 8490 NEW 6.4" LG LCD #LB064V02 (TD)(01) for WMS Bluebird bonus screen (**does NOT come with touch screen**)
- 8470 Single cold cathode lamp assembly for 6.4" LG LCD #LB064V02 (TD)(01) in WMS Bluebird bonus screen
- 8510 Triple cold cathode lamp assembly for WMS Bluebird 17" LCD monitor
- 8520 Triple cold cathode lamp assembly for WMS Bluebird 18" LCD monitor
- 9300 Single raw cold cathode lamp for 19 inch LCD monitor in WMS games
- 9830 Single raw cold cathode lamp for 22 inch LCD monitor in WMS games

### Lamp Testers

- 9220 Bench top cold cathode lamp tester (**includes A/C adapter & power strip with ON/OFF switch**)
- 9840 Bench top dual ccfl inverter & lamp tester

### Miscellaneous

- 1280 Raw cold cathode lamp 2.0mm X 250mm
- 1320 Single raw cold cathode lamp 2.4mm X 245mm
- 1420 Raw cold cathode lamp 2.6mm X 294mm
- 1290 Raw cold cathode lamp 2.0mm X 300mm
- 9910 Raw cold cathode lamp 2.0mm X 310mm
- 9970 Raw cold cathode lamp 2.6mm X 316mm
- 1190 Single raw cold cathode lamp 2.6mm X 342mm
- 8420 Raw cold cathode lamp, color white, size 2.4mm x 381mm
- 1330 Single raw cold cathode lamp 2.6mm X 385mm
- 1340 Raw cold cathode lamp, color white, size 2.6mm x 390mm
- 8400 Raw cold cathode lamp, color white, size 2.4mm x 394mm
- 1350 Single raw cold cathode lamp 2.6mm X 420mm
- 1020 Single raw cold cathode lamp, **purple color**, 4.0mm X 580mmRaw
- 1070 Single raw cold cathode lamp for Wells Gardner 6.4" LCD
- 8450 Single raw cold cathode lamp for 15" LCD in Touchtunes Maestro Monitor
- 9920 Single raw cold cathode lamp for 15 inch LCD in Touchtunes Genesis General Touch monitor
- 9960 Single raw cold cathode lamp for 17 inch ELO LCD
- 8440 Single raw cold cathode lamp for 19" LCD in MackVision LCD Monitor
- 1210 Silicone end cap for 2.6mm cold cathode lamp
- 1220 Single "O" ring for 2.6mm cold cathode lamp
- 1230 Figure 8 "O" ring for 2.6mm cold cathode lamp
- 9980 24v single output ccfl inverter for Aristocrat Viridian belly light
- 1250 Sharp 7" LCD #LQ070T3AG02
- 1380 One set of touch screen tape for 6.2 inch LCD Includes 2 long pieces and 2 short pieces of tape
- 8620 24 volt single output cold cathode lamp Piezo inverter



For more information or  
to place an order contact  
one of our distributors or  
contact us at

pacificillumination@gmail.com



## **PACIFIC ILLUMINATION REPLACEMENT PARTS**

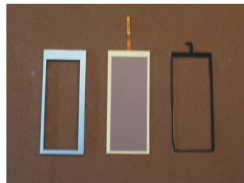
### **For Bally IView Player Tracking System Displays (“IDW” & “Hitachi”)**

#### **Replacement parts for the “IDW” display**

- #8650 – Single cold cathode lamp assembly for “IDW” display
- #8950 - 5 wire touch screen kit for “IDW” display (touch screen, copper foam grommet & metal housing)
- #1200 - Copper foam grommet for touch screen on “IDW” display
- #8320 – Metal housing for touch screen on “IDW” display
- #1060 – New 5 wire touch screen for “IDW” display (touch screen only)
- #9800 – Inverter for cold cathode lamp in “IDW” display

#### **Replacement parts for the “HITACHI” display**

- #1240 – Used Hitachi 6.2 inch display with 5 wire touch screen attached
- #8680 – Single cold cathode lamp assembly for “HITACHI” display
- #1040 – Inverter for cold cathode lamp in “HITACHI” display
- #9890 – New 5 wire touch screen for “HITACHI” display (touch screen only)



**For more info or to place an order contact one of our distributors  
below or contact us at [pacificillumination@gmail.com](mailto:pacificillumination@gmail.com)**



702-685-7613

**PACIFIC ILLUMINATION 949-429-3896 or [pacificillumination@gmail.com](mailto:pacificillumination@gmail.com)**



SPECIALIST  
OEM  
SOLUTION  
PROVIDER

sales@internationalbrandgaming.com  
SALES +44 (0) 1865 600030  
www.internationalbrandgaming.com

## Slot Tech Press Release

### ATRONIC AND SPIELO TO SHOW TOP NEW CASINO PRODUCTS AT G2E 2010-Howie Mandel will appear live to support DEAL OR NO DEAL™ Join'N Play

(LAS VEGAS, NV) – ATRONIC and SPIELO are offering new products that combine experience, performance, and innovation to International casino customers at Booth #1783 at the Global Gaming Expo (G2E) at the Las Vegas Convention Center from Nov. 16 to 18, 2010. ATRONIC and SPIELO's commercial casino line-up includes the launch of a brandnew cabinet and product range, as well as exciting linked, progressive, and community games, proven core game titles, three hot new family brands, and flexible systems solutions.

As a highlight of the show, DEAL OR NO DEAL™ TV host Howie Mandel is making a special appearance at the booth on Tuesday, Nov. 16, from 2:30 p.m. to 4:30 p.m. to promote the North American launch of DEAL OR NO DEAL Join'N Play™, a linked community version of the game, and the first game under the successful licensed brand to feature Mandel.



**YOUR TRUSTED CHOICE**  
for reliability and unparalleled service

#### PERFORMANCE YOU CAN DEPEND ON:

- Zero defects: no jamming, no downtime
- Easy-lift, banded packs simplify unpacking & loading
- Multiple plants for expeditious production & delivery
- Inventory management services
- Exceptional, one-to-one customer service

Approved for use by all TITO peripheral equipment OEMs and slot machine manufacturers worldwide



For exceptional service, contact Susan Mitchell

901-377-1849  
susan.mitchell@slot-tickets.com  
www.slot-tickets.com

**Slot-Tickets™**  
WORLDWIDE  
a WS Packaging Group Company  
1655 Wynne Rd. Cordova, TN 38016



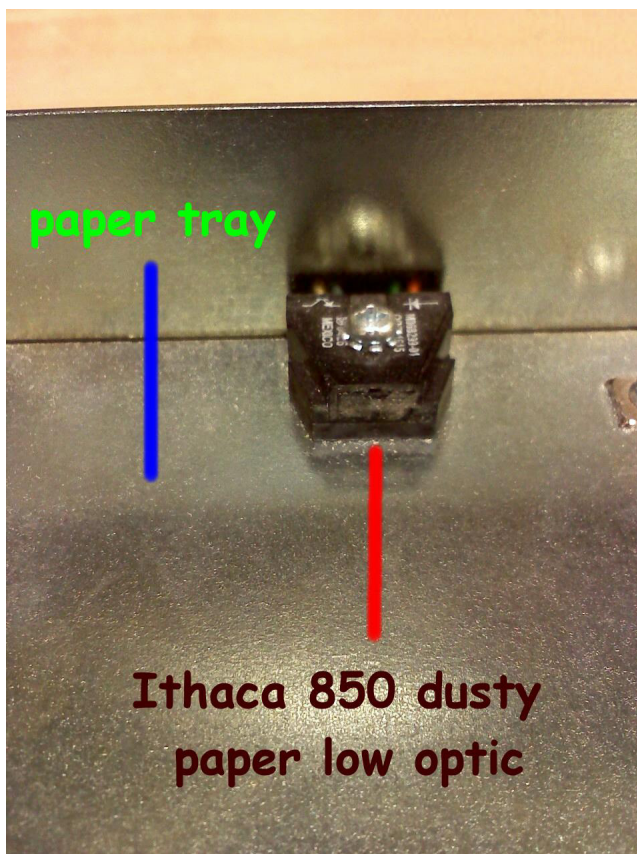
### Ithaca 850 Paper Low Tilts

On the ticket printer bench, there was an Ithaca 850 with a note on it that read “keeps sending paper low tilts to dispatch.” Under normal circumstances, this means that the printer thinks it is low on paper and a paper fill will be needed soon. In this case, the printer repeatedly sent “paper low” errors to our slot dispatch computer and a slot attendant would have to go and card the game along with entering a failure code. If a

## Quick & Simple Repairs #68

By Pat Porath

game does this, it can get irritating quite quickly so the slot tech simply swapped out the problem printer with a spare and the problem was solved. My question was, why did the printer keep sending error signals to the dispatch computer? I haven’t heard of it with the Ithaca 850s. During a quick inspection it became obvious what the problem was. The paper low optic was dusty and dirty. I used a printer cleaning pen, then a dry Q-tip to clean it and the problem was solved.



### Ithaca 950 Ticket Printer Specs and Basics

At the casino I work at we don’t have a lot of them, but some. I would guess in the area of 40, give or take (never really counted them). Overall, in my personal opinion, they run very well. We have some that came with new Bally and Konami games. Thus far, the only issues that I have run into were figuring out what “firmware” (flash memory printer software) that went to which manufacturer of game when it was time to get spares tested. A couple had gotten a dust bunny in them and only needed the optics cleaned.

Some of the printer specifications are as follows:  
Type of printing- direct thermal  
Printing resolution-496 dots per line  
Print speed (text)-5 seconds per inch  
Print speed (2 color)-2.5 seconds per inch  
Weight- 3.8 lbs.  
Power requirement-24vdc

What firmware goes with what game? Well, what I did was walk up to say a Konami game, open the

WHAT'S NEXT ?

We've spent ten years on the cutting edge  
to help you face today's challenges.



**NOVEMBER 16-18, 2010 - LAS VEGAS CONVENTION CENTER**

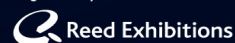
November 15-16—iGaming Congress at G2E—NEW!

November 15—G2E Leadership Academy • G2E Advanced Gaming Institute • Security & Surveillance Institute



An American Gaming Association Event

Organized by



door and simply press and hold the feed button for a couple of seconds. A ticket should print similar to the one shown. On the ticket, it will display "firmware."

ONLY certain firmware goes with certain games. So far, this is what I have found out:

Firmware N00528 is for WMS Bluebird

Firmware S03524 is for Bally Cinevision and

Cinereel

Firmware S00124 is for Konami Advantage games

More information can be found at [www.TRANSACTION-TECH.com](http://www.TRANSACTION-TECH.com)

### Bally 6000 Monte Carlo- Code 24 & 51 Wouldn't Clear

It seemed like it didn't matter what I did to the

game, error codes 24 and 51 would not clear. For starters, how could a totally coinless Bally game even display a code 24? For those that don't remember or don't know, a code 24 on a Bally 6000 is a coin-in problem and a code 51 means the game thinks a door is open. I checked the coin-in optic for any obstructions such as a dust bunny and I removed the "prism" (yes, there is a coin-in prism; it can be seen with belly door open) to check if it was dirty. That part of the game looked fine.

What about the door open code? Connections were checked at the belly door switch, the main door switch and the bill acceptor door switch. They all looked OK too. I was thinking of grabbing a multimeter to make sure the switches were, in fact good, but not quite yet. The main processor board was reseated and connectors were checked



on the backplane board. They looked to be in place too. I thought to myself, where might other door switches be located? Then it hit me, THE TOP BOX area! With slight pressure, I pushed on the top door that was in front of the bonus wheel and it pressed inward significantly. Next, the main slot door was closed then PRESTO! The game showed all doors closed and NO error codes. In the top area, the door came open just enough to trip the switch to show a door open code on the game display. I re-locked the top door to make sure that it was snug and the game worked great.

### IGT Smoked Motherboard

In our log book, I read

about an IGT "4-in 1" game that had been diagnosed as having a bad motherboard. Seeing that I had a little time on my hands, why not check it out for myself? As soon as I turned the game on, smoke started to come from the motherboard area. Yes, I would definitely say the motherboard is fried. I was asked to remove the board from the game so it could be looked at. It was kind of a job taking it out. The ticket printer and printer frame had to be removed, along with the entire bill acceptor assembly and other odds and ends. It was much more difficult than removing a motherboard from an S2000 upright game, in my opinion anyway. Not really difficult per se, maybe time consuming. If you ever see

one, there are A LOT of connectors on it. Once removed, there were obvious black burn marks in a couple of areas on the board. How did the board fry? I was told that someone was performing a paper fill and when the printer was pushed back in its home position, smoke started. Somehow the printer cable (a GEN 2 Universal) got pinched and shorted out the game, which brings up another question: Was anything else fried? After the motherboard was installed along with a replacement ticket printer and cable, the game was turned on. A RAM clear was performed, game options were selected, and the game was ready to be tested. After everything looked good it was put back in play. Luck-

**Editor's Note: LOOK! New Neuron Ad!**

**NEURON**  
Electronics, Inc.

**GET 99.9% OUT OF YOUR INVESTMENT**

OVER 1 MILLION UNITS SOLD

**REPLACE YOUR CARD READERS WITH ONLY THE BEST  
AT A GREAT PRICE**

**- APPROVED SUPPLIER FOR:**

**BALLY**

**ARISTOCRAT / CDS**

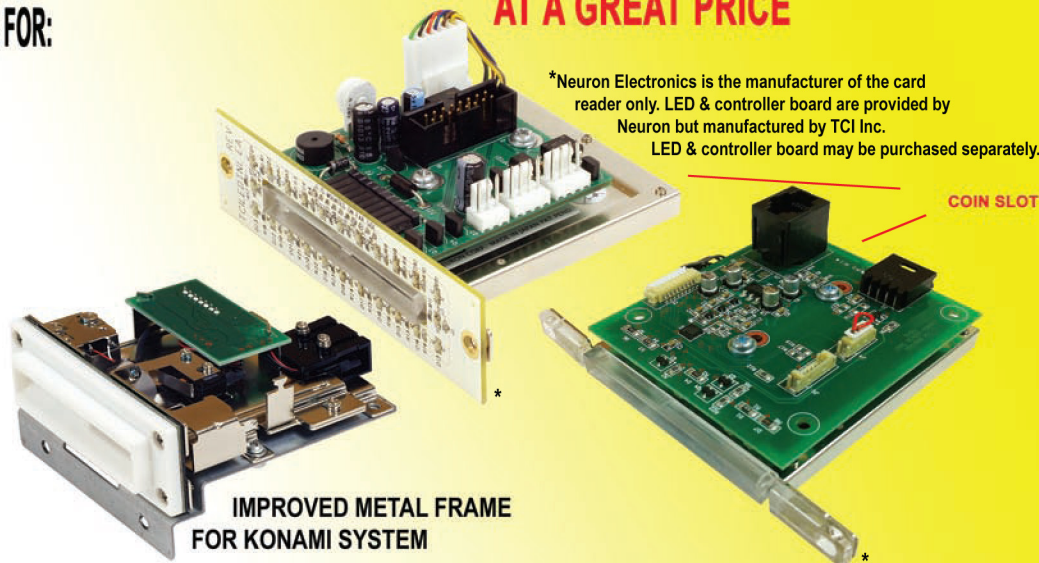
**MIKOHN**

**SPIELO**

**IGT (IMPROVED DESIGN)  
COIN SLOT**

**- 1 YEAR WARRANTY**

**- MADE IN JAPAN**



\*Neuron Electronics is the manufacturer of the card reader only. LED & controller board are provided by Neuron but manufactured by TCI Inc. LED & controller board may be purchased separately.

**IMPROVED METAL FRAME  
FOR KONAMI SYSTEM**

8541 WELLSFORD PL, SUITE E, SANTA FE SPRINGS CA 90670  
(562)789-1322 - [www.neuron-usa.com](http://www.neuron-usa.com) - [mario@neuron-usa.com](mailto:mario@neuron-usa.com)

**Don't replace  
REPAIR IN-HOUSE AND SAVE!**



# Buying Replacement Units!

Is your casino totally self-sufficient in repairing monitors, power supplies, bill validators and ticket printers or are you throwing away hundreds or thousands of dollars purchasing replacement units? While it is not exactly a "hidden" cost to your department, some slot managers simply accept the price of replacements as the "cost of doing business" while it progressively nibbles away at the casino's bottom line. **IT DOESN'T HAVE TO BE THIS WAY.**



"OK. You asked and I listened. My new tech class eliminates obsolete CRT monitor repair and the associated monitor repair lab. In just four or five days, your slot techs can learn to repair Power Supplies, LCD Monitors, Ticket Printers, Bill Validators and more. It's easy and it's fun." - Randy Fromm



In truth, most electronic repairs are pretty easy. Often, it's just a matter of testing and replacing a small handful of inexpensive, off-the-shelf electronic components. Sometimes, it's just one. For example, it costs less than 25 cents in parts to repair the most common failure in Bally power supplies. The entire process takes about five minutes.

## LET ME SHOW YOUR SLOT TECHS THE QUICK AND EASY WAYS TO REPAIR CASINO ELECTRONICS

You will see an immediate savings to the casino, starting with the in-house repairs that will be performed during the class!



About Randy Fromm: I am the publisher of Slot Tech Magazine. First published in 2001, Slot Tech Magazine is a monthly trade journal focusing on casino slot machine repair. I have been repairing electronics for the gaming industry since 1972. I really enjoy what I do and I love showing others how easy it can be. **No previous knowledge of electronics is required.**

*For more information, including course offerings and complete pricing information, please visit the website at [slot-techs.com](http://slot-techs.com)*

**Slot Tech Magazine 1944 Falmouth Dr. El Cajon, CA 92020-2827  
tel.619.593.6131 fax.619.593.6132**

ily nothing else was fried.

### IGT Trimline Blue Screen Error

We recently had a Trimline game with the program "Fish in a Barrel" that would send an error signal to our slot dispatch that stated "serial communications down." When the attendant or tech would go to the game, there would be a blue screen displayed along with something like "reset error with key." Sure, a key reset worked but not for very long. It seemed like every half hour, the game would tilt. After a few more errors, there wasn't a doubt the game had an issue. Numerous items were checked such as connectors, game options, and Sentinel communication. Everything looked to be OK. From experience, if a Trimline or an AVP re-boots itself or acts kind of weird, it may lead to one of two items: A bad power supply or a bad cooling fan on the video card that is located in the brain box (main processor board area). Once the brain box cover was removed and I could see the fan, I tried to give it a spin. It did not spin free and easy like it was supposed to so I replaced the complete video card assembly, turned the game back on, and waited. So far so good. I haven't seen or heard of any problems with the game since (three days and counting. lol)

### WMS 550 Main Door Open Problem

While testing out the ticket printer on an upright WMS 550, the game thought that the main slot door came open and displayed "main door open" in the monitor. I slightly pushed on the door and it would show closed. A slight pull on it, and it would show open again. After the main door was physically opened, I saw the problem right away. On the door side, the middle door latch was very loose. I tightened the screws for it and the problem was resolved. With a slight push and slight pull on the door, the door switch remained in the closed position. Simply tightening the loose door latch on the door side fixed the problem. Could this be why I had a few ticket printer complaints on the game? If the printer is in the middle of printing out a ticket and the door switch pops open, there is a good chance that the printing quality of ticket may be interrupted such as it only printing a partial ticket. Only time will tell for sure. I cashed out around ten test tickets and didn't have any problems. We'll see.

- Pat Porath  
[pporath@slot-techs.com](mailto:pporath@slot-techs.com)

## Dazzling Colorful Illumination

for GAMING

- 
- Complete line of high -efficient LEDs
  - Countless color combinations
  - Full custom options in any shape, form, color
  - Large stock, short lead time of 4-5 weeks for standard products
  - Various mid-power packages: 0.5W, 1W, 1.5W, 2W, 3W
  - Low thermal resistance and high maximum junction temperature
  - Excellent performance, quality, and reliability



## Kingbright

TS 16949, ISO 9001 & ISO 14001 Manufacturer  
225 Brea Canyon Rd., City of Industry, CA 91789  
TEL : 1-909-468-0500 FAX : 1-909-468-0505  
E-mail : [sales6@KingbrightUSA.com](mailto:sales6@KingbrightUSA.com)  
Website : [www.KingbrightUSA.com](http://www.KingbrightUSA.com)

TechFest 21 was a really fun event at a beautiful property in the “Four Corners” area of the USA. In response to my call for “Where would you like a TechFest?” in a previous issue of Slot Tech Magazine, I received an e-mail from Sky Ute Casino’s James Hardman, offering up their first-class facilities for the event and promising me a dozen attendees. The offer was too good to refuse, regardless of the fact that Sky Ute is, more-or-less, in the middle of nowhere in the Great American Southwest. Luckily, they have a sweet little regional airport in nearby Durango, Colorado although Suzo-Happ’s David Oldham (road warrior and my personal hero) rented a Bitchin’ Camaro and, undoubtedly fueled by cigarettes and Red Bull, made the drive from Las Vegas one day after work and drove back after his presentation on FutureLogic printers and MEI Cash-Flow bill validators the next day.

Also presenting at TechFest 21 were Tray Nofziger of Ceronix on LCD monitors, Russ Wigé of Transact Technologies on their Epic ticket printers and Dan Petersen of JCM on bill acceptors. TechFest 22 is back at Mystic Lake Casino in May 2011. - **Randy Fromm**



TechFest 21 was held at the Sky Ute Casino in Ignacio, Colorado



OKAY, BOSS, AS SOON AS THE GRID COMES BACK UP, I'M READY."

Do you offer goods and services to the gaming industry's technical community? Slot Tech Magazine is the only technical trade journal for the international casino industry.

Advertise in Slot Tech Magazine  
It's cheap and it gets results!

Contact Randy Fromm on 619.593.6131  
[slot-techs.com](http://slot-techs.com)

For schematic diagrams, drivers, diagnostic software, podcasts, service manuals and more, visit the Slot Technical Department at [slot-tech.com](http://slot-tech.com).

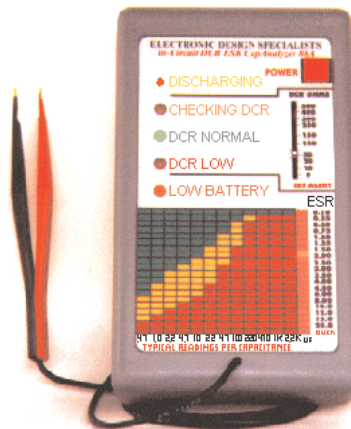
For batch downloads, use ftp. Point your ftp client to [slot-tech.com](http://slot-tech.com)  
user=Slot Tech  
Password=kxkvi8

**TechFest 22**  
is coming to Mystic  
Lake Casino  
May 24-26 2011

Mark your  
calendar now!

***Editor's Note:*** This is the best device you can get for testing electrolytic capacitors in circuit or out of circuit.

**Repair Monitors, Power Supplies, Gameboards?**  
**Check any Electrolytic Capacitor In-Circuit with 100% Accuracy in 3 Seconds---GUARANTEED\***



Automatically discharges capacitor

Checks DCR with alerts for shorts

Measures DCR to 500 ohms

Measures ESR from 0.1 to 20 ohms

Checks caps from .47uF to 2200uF

Beeps one to five beeps for quality

Three-color chart for good-fair-bad

\*range 0.47uF - 2.2K uF 90-day money-back guarantee

Portable, Easy to Use, Inexpensive, Highly Recommended by leaders in the industry. **CapAnalyzer 88A** by EDS, Inc.

At your favorite distributor, or call 561-487-6103 or [www.eds-inc.com](http://www.eds-inc.com)

## Subscriptions & Back Issues

### Why back issues of Slot Tech Magazine are important to own . . .

Slot Tech Magazine is strictly technical. As such, the magazine's contents are not time critical. The repair information and technical data contained in past issues is just as valid today as it was the day it was published.

Additionally, current and future articles more-or-less assume that readers are already familiar with what has been covered in past issues. This editorial policy assures that Slot Tech Magazine's contributing writers are not limited to "writing down" to the level of a novice technician but are free to continue to produce the most comprehensive technical articles in the gaming industry.

### Randy Fromm's Slot Tech Magazine is published monthly by:

Slot Tech Magazine  
1944 Falmouth Dr.  
El Cajon, CA 92020-2827  
tel.619.593.6131  
fax.619.593.6132  
e-mail [editor@slot-techs.com](mailto:editor@slot-techs.com)

### Subscription rates:

#### Domestic (USA & Canada)

1 year - \$60.00  
2 years - \$120.00

#### International

1 year - \$120.00  
2 years - \$240.00

### Back Issues

Printed back issues are available for only six months from the date of publication. All single issues of Slot Tech Magazine are \$10.00/ea.

For further details on the contents of each issue, please refer to the website at [slot-techs.com](http://slot-techs.com). To order, fax a PO or e-mail a note listing the issues you need.

Complete archive (2001 to present) available online. Visit [slot-techs.com](http://slot-techs.com) for details.

### Invoice me!

PO Number \_\_\_\_\_

Company Name \_\_\_\_\_

Contact \_\_\_\_\_

Address \_\_\_\_\_

Address \_\_\_\_\_

City \_\_\_\_\_ State/Prov. \_\_\_\_\_

Country \_\_\_\_\_ Zip/Postal Code \_\_\_\_\_

Telephone \_\_\_\_\_

E-mail \_\_\_\_\_

Type of card: ☐ American Express

☐ Discover

☐ MasterCard

☐ Visa

☐ 1 year subscription, domestic

☐ 1 year subscription, international

☐ 2 year subscription, domestic

☐ 2 year subscription, international

Account Number: \_\_\_\_\_

Expiration Date: \_\_\_\_\_

Your Source for Gaming & Electronics Supplies



W-G LCD MONITORS  
& KITS



LIGHTING & COMPONENTS



CURVED & FLAT  
TOUCH SCREENS

## Your #1 Source for Gaming Parts & Service

"AG&E" A WELLS - GARDNER COMPANY



BV / PRINTERS  
NEW / REFURBISHED  
REPAIRED



PLAYER  
TRACKING



BUTTONS



USED GAMES



TOOLS & SUPPLIES

### Service Center

- ⇒ Authorized JCM Repair Center
- ⇒ Monitor & LCD Repairs for: IGT, Bally, WMS, Aristocrat and Konami

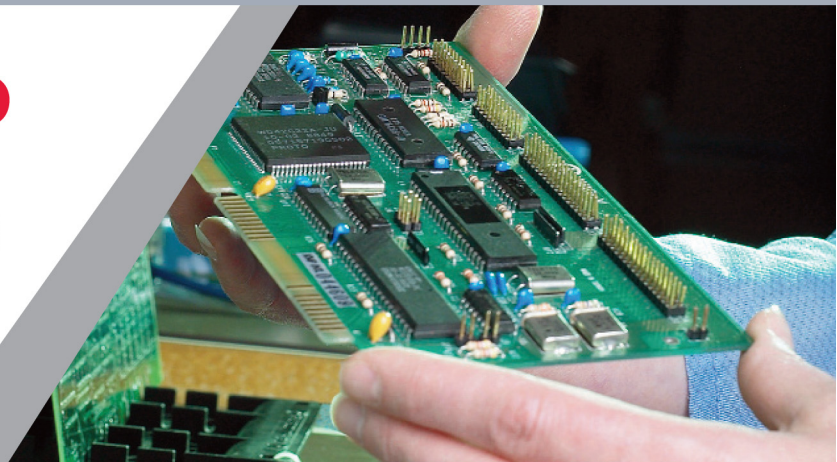
### Contact Us

American Gaming & Electronics P: (702) 798-5752  
4630 S. Arville Street TF: (800) 727-6807  
Suite E F: (702) 798-5762  
Las Vegas, NV 89103

[WWW.AGEGAMING.COM](http://WWW.AGEGAMING.COM)

# SUZO HAPP

## SERVICE GROUP



Suzo-Happ provides warranty and repair services on a variety of gaming, amusement, retail and vending products.

## Suzo-Happ Service Programs

**Flat Rate Repairs**

**Reconditioned Products**

**On-Site Maintenance  
In Select Locations**

**Pick Up & Delivery Service  
In Select Locations**

Factory trained technicians located across the United States ensure your products are restored to original equipment manufacturer's specifications using factory approved parts.

Responsive service support staff provide ease of processing your service needs.

Trusted and proven service quality from original equipment manufacturers to end users.

## GAMING

### Authorized Warranty Services

- ✓FutureLogic (Exclusive)
- ✓MEI (Exclusive)
- ✓Kortek (Exclusive)

### Repair Services

- ✓LCD Monitors
- ✓CRT Monitors
- ✓Game Power Supplies
- ✓Game Main Boards
- ✓Bill Validators
- ✓Ticket Printers

