

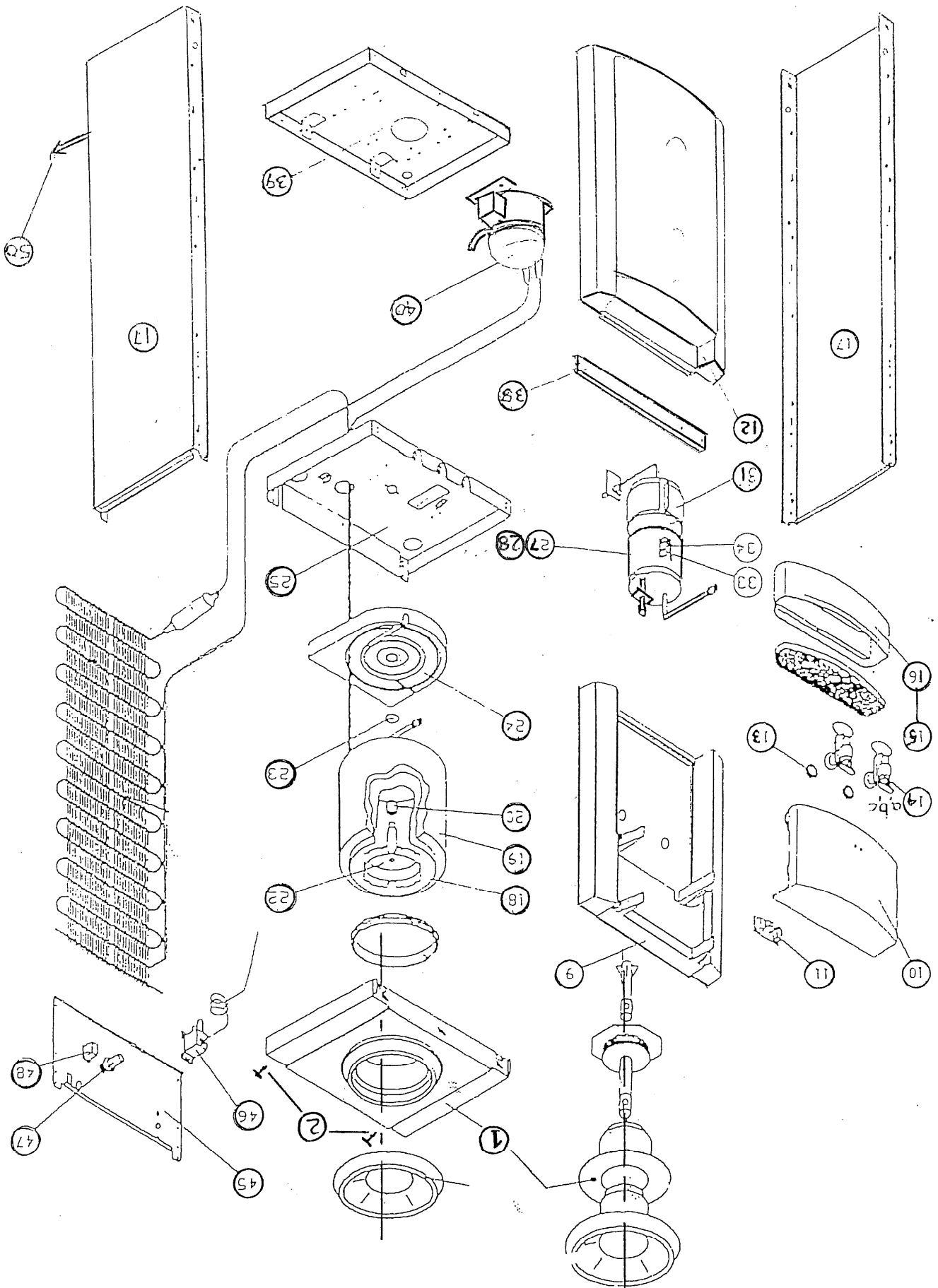
**AA 1000/1100 SERIES WATER COOLERS
PARTS LIST**

No	Description	Product Code	Remarks
1	Bottle Top Cover Complete	WB1001	
2	Top Cover Fixings	WB1002A	Use WB3325
3			
4			
5			
6			
7			
8	Lamp Assembly 1100	WB1008	
9	Upper Front Cover (large)	WB1009	
10	Upper Front Cover	WB1010	
11	Lamp Assembly 1000	WB1011	
12	Lower Front Cover	WB1012	
13	Tap Seal Washer	WB1013	Use WB 3349
14a	Cold Tap clear (blue)	WB3312C	
14b	Cook Tap clear (green)	WB3313C	
14c	Hot Tap clear (red)	WB3311CS	
14a	Cold tap grey (blue)	WB1005	
14b	Cook Tap grey (green)	WB1006	
14c	Hot Tap grey (red)	WB1007	
14a	Cold tap unlockable (blue)	WB1028	
14b	Cook tap unlockable (green)	WB1029	
14c	Hot tap unlockable (safety)	WB1030	
15	Drip tray 1000 Complete	WB1015	
16	Drip tray 1100 Complete	WB1016	
17	Side Panel	WB1017	
18	Cold Tank	WB1018	
19	Insulation	WB1019	
20	Tank Nut	WB1020	
21	Ambient Supply Pipe	WB1021	Cook/Cold unit only
22	Tank Baffle	WB1022	
23	Tank "O" Ring	WB1023	
24	Base Insulation	WB1024	
25	Cold Tank Shelf	WB1025	
26			
27	Hot Tank Complete	WB1027	Use WB3324

**AA 1000/1100 SERIES WATER COOLERS
PARTS LIST**

No	Description	Product Code	Remarks
28	Hot Tank Complete Table top	WB1027T	
31	Band Heater	WB1031	Use WB3323
32	Hot Thermostat 87	WB1032	Use WB 3351
33	Hot Thermostat 90	WB1033	Use WB3342
34	Safety Thermostat	WB1034	Use WB3342S
35			
36			
37			
38	Front Bracket	WB1038	
39	Base Plate	WB1039	
40	Compressor	WB1040	Not on stock
41	Compressor Relay	WB1041	Use WB3355
42			
43			
44			
45	Rear Panel	WB1045	
46	Cold Thermostat	WB1046	
47	Fuse Assembly	WB1047	
48	Heater Switch	WB1048	
49	Top Cover 1000	WB1049	
50	Mains Lead	WB1050	
51	Top Cover 1100 POU	WB1051	
52	Upper Front Cover 1100	WB1052	With AA Logo
53	Tank lid POU Complete	WB1053	
54	Upper front cover 1100	WB1054	No Logo
55	Tank Lid seal	WB1055	
56	Side Panel 1000 T.Top	WB1056	T. Top Only
57	Lower Front Cover T.Top	WB1057	T. Top Only
58			
59			
60			

AA 1000/1100 SERIES WATER COOLERS



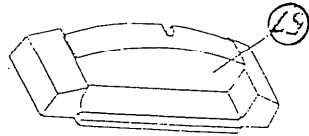
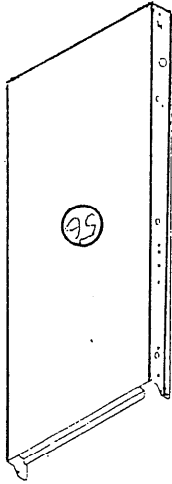


ILLUSTRATION OF SPECIFIC TABLE TOP SPARES

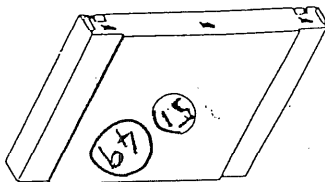
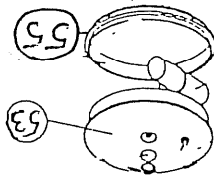
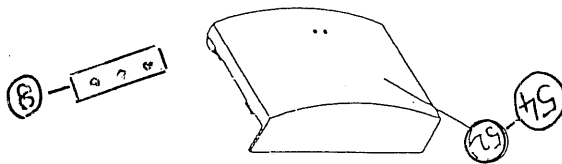


ILLUSTRATION OF CON KIT SPARES
FOR CONVERSION FROM BOTTLE TO POU