

Vending Range

Optima, Ventura, Riocca, Eclipse, Fusion & Fusion Xtra

Spare Parts Manual



Contents

Page No.

Contents	1
Ventura/Optima Exterior	5
Ventura/Optima Interior	7
Ventura/Optima Interior (Covers Removed)	9
Ventura/Optima Door Assembly	11
Ventura/Optima Selection Panel	13
Riocca Exterior	15
Riocca Interior	17
Riocca Interior (Covers Removed)	19
Riocca Door Assembly	21
Eclipse Exterior	23
Eclipse Interior	25
Eclipse Interior (Covers Removed)	27
Eclipse Door Assembly	29
Lightbox Assembly - Riocca & Eclipse	31
Selection Panel - Riocca & Eclipse	33
Fusion & Fusion Xtra Exterior	35
Fusion Interior - Instant & Freshbrew Models	39
Fusion Interior - Triple Freshbrew Models	41
Fusion Interior - Bean 2 Cup Models	43
Fusion Xtra Interior	45
Fusion Interior (Covers Removed)	47
Fusion - Door Assembly	49
Sugar Dispense Module - Fusion B2C	51
Tea Brewer Assembly - Fusion & Fusion Xtra	53
Paperless Brewer Assembly - Fusion Triple Freshbrew	55
Common Parts	59
Boiler Assembly	61
3 Way Dispense Valve Assembly	63

Contents (Cont'd)

	Page No.
Mixing System.....	65
Dispense Head Assembly.....	67
Canister Assembly.....	69
Freshbrew Canister Assembly.....	71
Cup Drop Unit.....	73
Extract System.....	75
Power Supply Unit.....	77
MPU Board.....	79
Brewer Module Assembly.....	81
Brewer Assembly - Paper Type.....	83
Freshbrew Waste Bucket Assembly.....	87
Inlet Valve Assembly.....	89
Water Filter Assembly - Brita.....	91
Water Filer Assembly - Everpure.....	93
Chiller Unit - Regency.....	95
Carbonator Unit - Monarch.....	97
Chiller Unit - Dart.....	99
Carbonator/Chiller Unit - Viscount.....	101
Bean 2 Cup Module - Fusion & Eclipse B2C Machines.....	103
Bean 2 Cup Module - Rear $\frac{3}{4}$ View.....	105
Bean 2 Cup Module - Side View.....	107
Bean 2 Cup Brewer Assembly.....	109

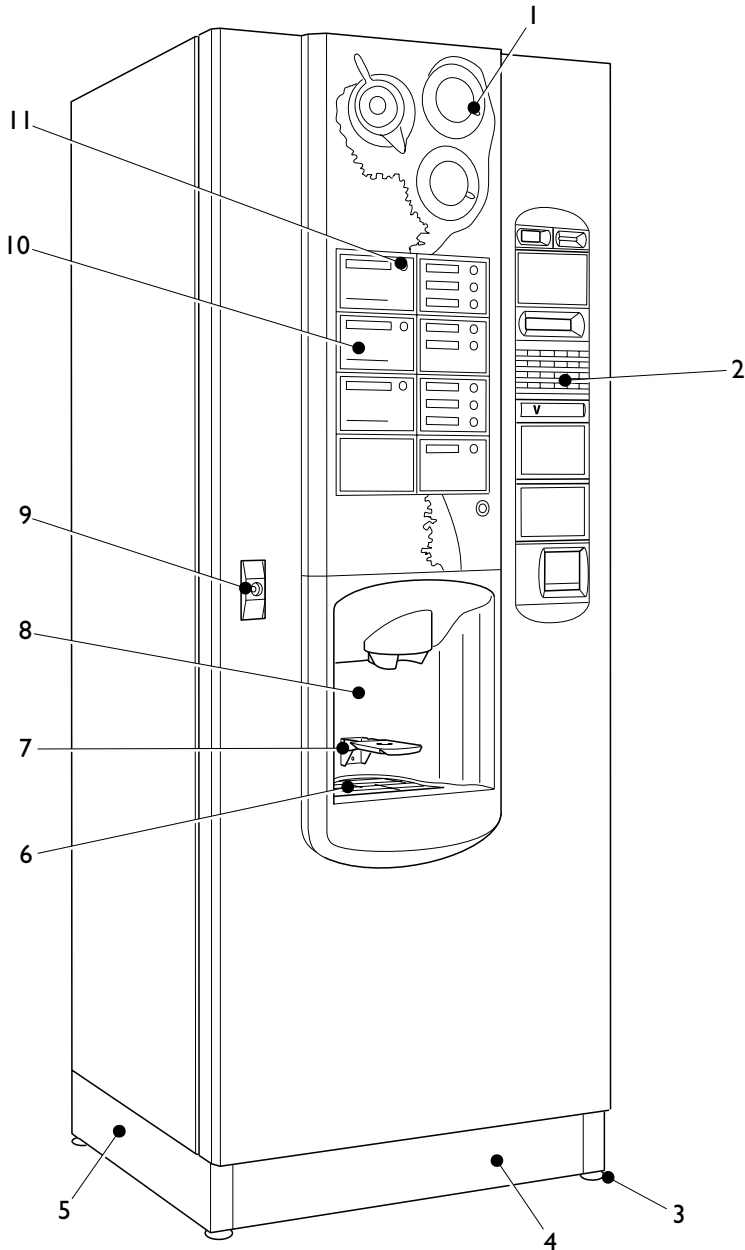
For all spare parts sales and enquiries:

Telephone: 01249 667321

Fax: 01249 461508

Email: spares@cranems.co.uk

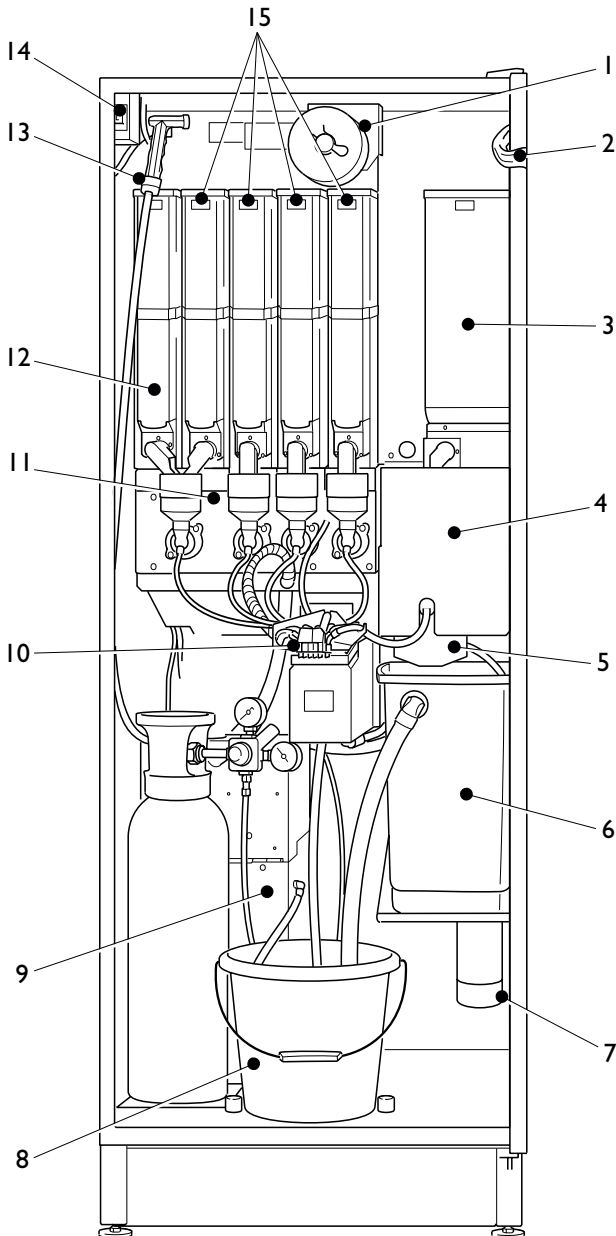
Ventura/Optima - Exterior



Ventura/Optima - Exterior

Ref No.	Part No.	Item Description
1	(a) GR05663000	Top Graphic - Green (Ventura)
	(b) GR06735000	Top Graphic - Blue
	(c) GR07696000	Top Graphic - Green (Optima)
2		Keypad Assembly - See Page 13
3	ME01274000	Foot
4	MT05959000	Front Kick Plate
5	(a) MT05962000	Side Plate - LH
	(b) MT05963000	Side Plate - RH
6	MT05817000	Drip Tray Grill
7	(a) 1 CUPSTANDKIT	Cup Stand Assembly
	(b) PL04589000	Cup Stand
	(c) MT07156000	Cup Stand Support Bracket
	(c) FA01416000	Knurled Thumb Nut - M5
8	PL05600000	Jug Station
9	(a) ME04005000	Lock Handle
	(b) ME03200000	Lock Insert
	(c) ME03274000	Key - No. 3704
10	(a) PR05821000	Selection Decals - Cold Drinks
	(b) PR05822000	Selection Decals - Tea/Coffee
	(c) PR05823000	Selection Decals - Speciality Drinks
	(d) PR05827000	Selection Decals - Cold & Option Drinks
11	(a) PR05824000	Price Decals, 1 - 30p
	(b) PR05825000	Price Decals, 31p - £1

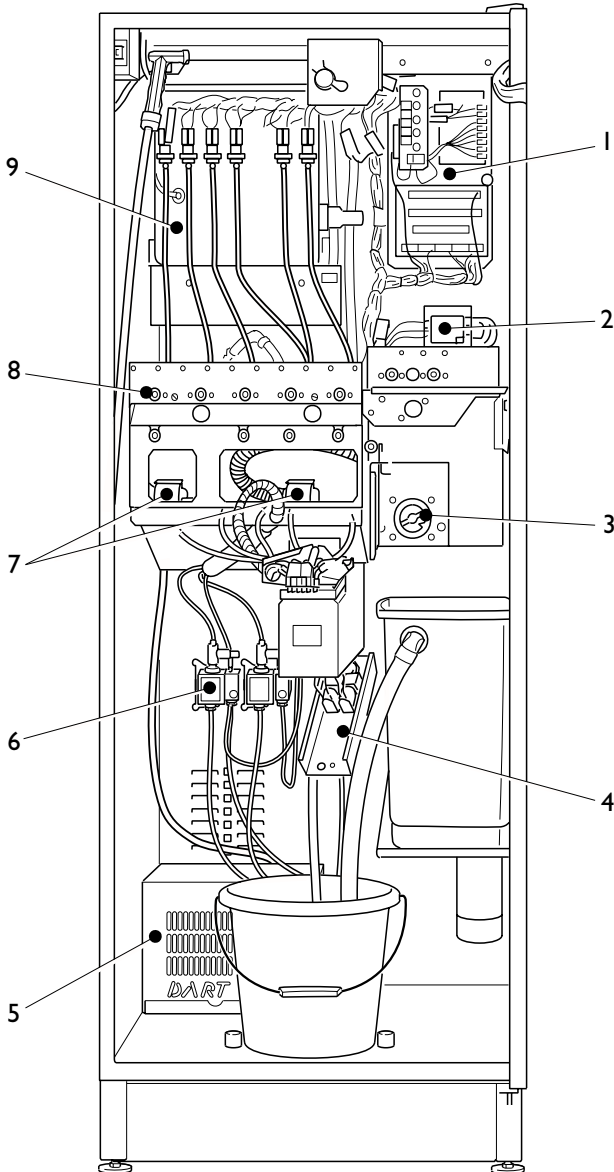
Ventura/Optima - Interior



Ventura/Optima - Interior

Ref No.	Part No.	Item Description
1	WF01176000	Filter Paper - Freshbrew Models
2	LO06187000	Main Loom
3	(a) PL01848000	Freshbrew Tea Canister - See Page 71
	(b) PL01923000	Freshbrew Coffee Canister - See Page 71
4	MT05093000	Brewer Cover Plate
5	ME01159000	Brewer Assembly (Paper) - See Page 83
6	WO04971001	Freshbrew Waste Bucket - See Page 87
7	1 EPURE CART KIT	Everpure Cartridge Kit - See Page 93
8	PL01172000	Waste Bucket
9	ME07860000	Carbonator, 2 Syrup - See page 97
10		Dispense Head Assembly - See Page 67
11		Mixing System - See Page 65
12	PL02145000	Canister - No Agitator - See Page 69
13	PH03674001	Spray Hose
14	EL01157000	Mains On/Off Switch
15	PL01105000	Canister - With Agitator - See Page 69

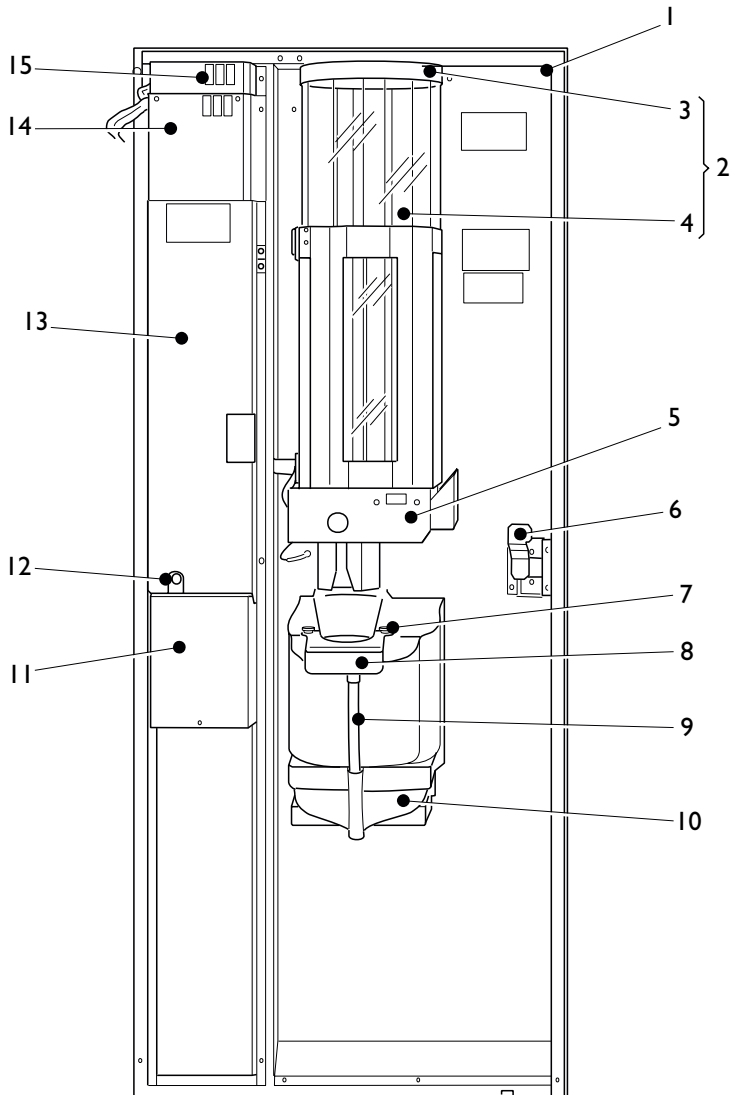
CRANE **MERCHANDISING SYSTEMS™**
A Crane Co. Company



Ventura/Optima - Interior (Covers Removed)

Ref No.	Part No.	Item Description
1		PSU Assembly - See Page 77
2	EL01154000	Mains Filter - 16A
3		Brewer Module Assembly - See Page 81
4		Inlet Valve Assembly - See Page 89
5		Dart Chiller - See Page 99
6	ME02700000	Syrup Pump
7		Fan Assembly - See Page 75
8	(a) MO01102C00	Ingredient Motor Assembly - 80 RPM
	(b) MO01103C00	Ingredient Motor Assembly - 140 RPM
9		Boiler Assembly - See Page 61

Ventura/Optima - Door Assembly

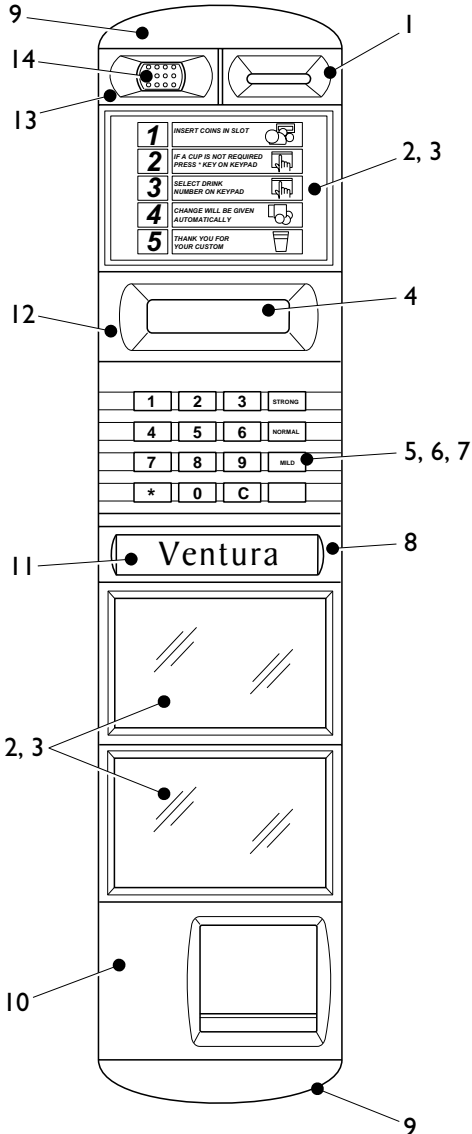


Ventura/Optima - Door Assembly

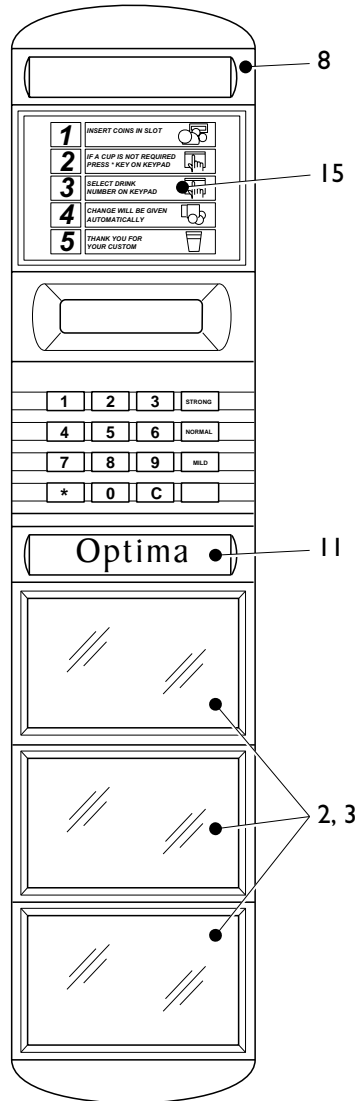
Ref No.	Part No.	Item Description
1	MT00011G00	Door Switch Actuator
2	ME01115000	Cup Turret Assembly
3	PL02713000	Cup Turret Lid
4	ME06500000	Cup Turret Sleeve
5		CDU Assembly - See Page 73
6	MT04790000	Door Lock Cam
7	FA01416000	Knurled Thumb Nut
8	(a) PL04863000	Cup Ring - Squat
	(b) PL04864000	Cup Ring - Tall
9	SI01142000	Silicone Pipe - 12 mm
10	PL05728000	Drip Tray
11	MT04811000	Cashbox Assembly
12	(a) ME01859000	Cashbox Lock
	(b) ME03333000	Cashbox Key
13	MT05736000	Coin Mech Cover
14		Control Board - See Page 79
15	EL04859000	Switch

Ventura/Optima - Selection Panel

Coin Option



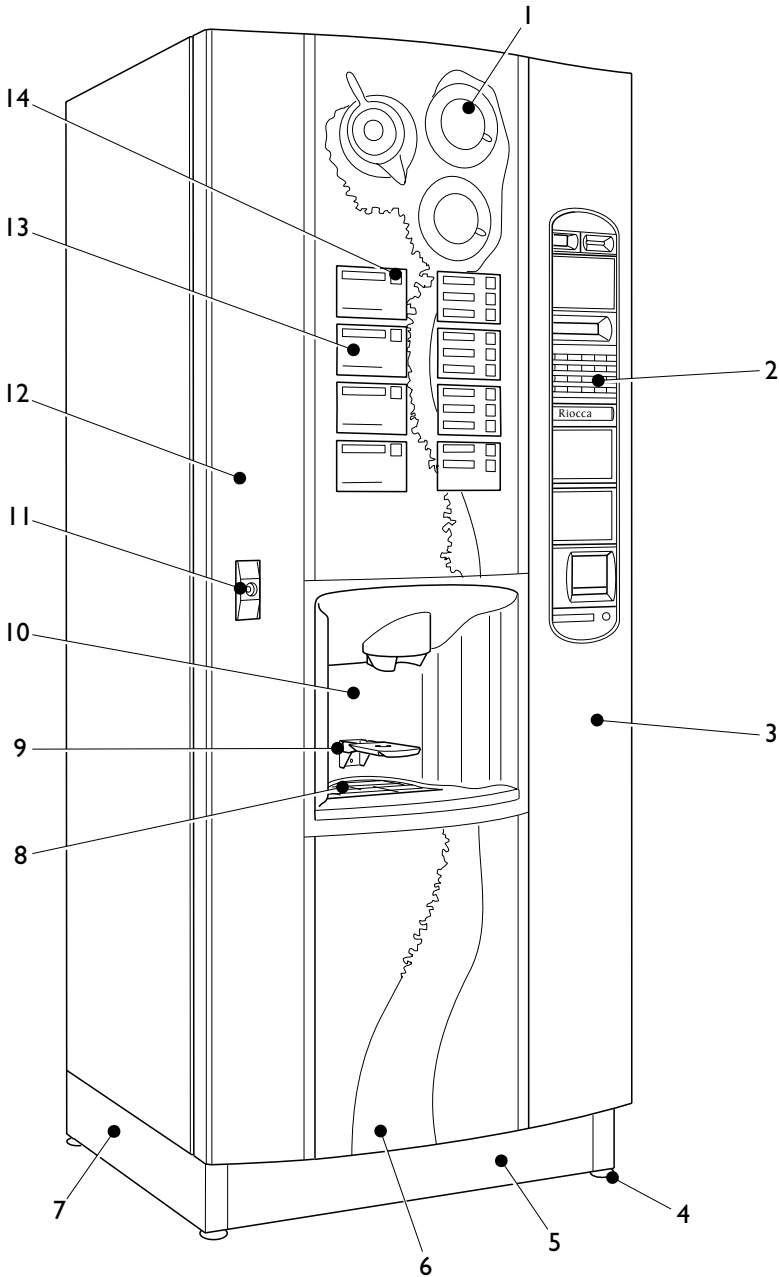
Free Vend Option



Ventura/Optima - Selection Panel

Ref No.	Part No.	Item Description
1	PL05184000	Coin Entry Bezel
2	PL05180000	Decal Base Moulding
3	PL05181000	Decal Window
4	EL06157000	LCD Assembly
5	PL05183000	Keypad Cover Moulding
6	MS05190000	Keypad Switch Assembly
7	MS05608000	Rubber Keypad
8	PL05413000	Name Badge Moulding
9	PL05414000	End Cap
10	PL05187000	Bezel - Coin Return
11	(a) PR05858000	Domed Badge - Ventura
	(b) PR07697000	Domed Badge - Optima
12	PL05182000	LCD Surround
13	PL05185000	Coin Reject Button Bezel
14	PL05186000	Coin Reject Button
15	PR05826000	Instruction Label Decal Set

Riocca - Exterior

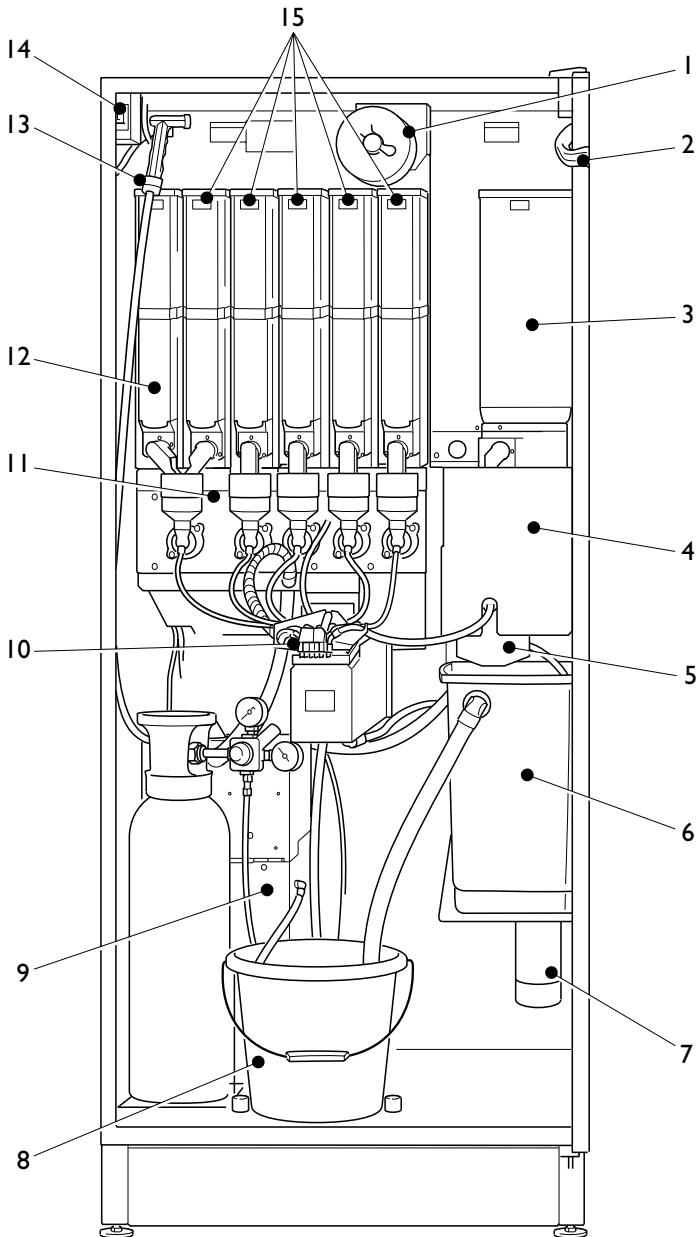


Riocca - Exterior

Ref No.	Part No.	Item Description
1		Lightbox/graphic assembly - See Page 31
2		Keypad - See Page 33
3	MX05704500	Extrusion - RH*
4	ME01274000	Foot
5	MT05960000	Front Kick Plate
6	(a) GR08598000	Bottom Graphic - Aqua Blue
	(b) GR08595000	Bottom Graphic - Slate Red
	(c) GR05726000	Bottom Graphic - Green
	(d) GR06737000	Bottom Graphic - Dark Blue (Old Style)
7	(a) MT05962000	Side Kick Plate - LH
	(b) MT05963000	Side Kick Plate - RH
8	MT05817000	Drip Tray Grill
9	(a) 1 CUPSTAND KIT	Cup Stand Assembly
	(b) PL04589000	Cup Stand
	(c) MT07156000	Cup Stand Support Bracket
	(c) FA01416000	Knurled Thumb Nut - M5
10	PL05700000	Jug Station
11	(a) ME04005000	Lock Handle
	(b) ME03200000	Lock Insert
	(c) ME03274000	Key - No. 3704
12	MX05705500	Extrusion - LH*
13	(a) PR05821000	Drink Selection Decals
	(b) PR05822000	Drink Selection Decals
	(c) PR05823000	Drink Selection Decals
	(d) PR05827000	Cold Drink Decals
14	(a) PR05824000	Price Decals - 1 - 30p
	(b) PR05825000	Price Decals - 31p - £1

* Please state colour when ordering this item.

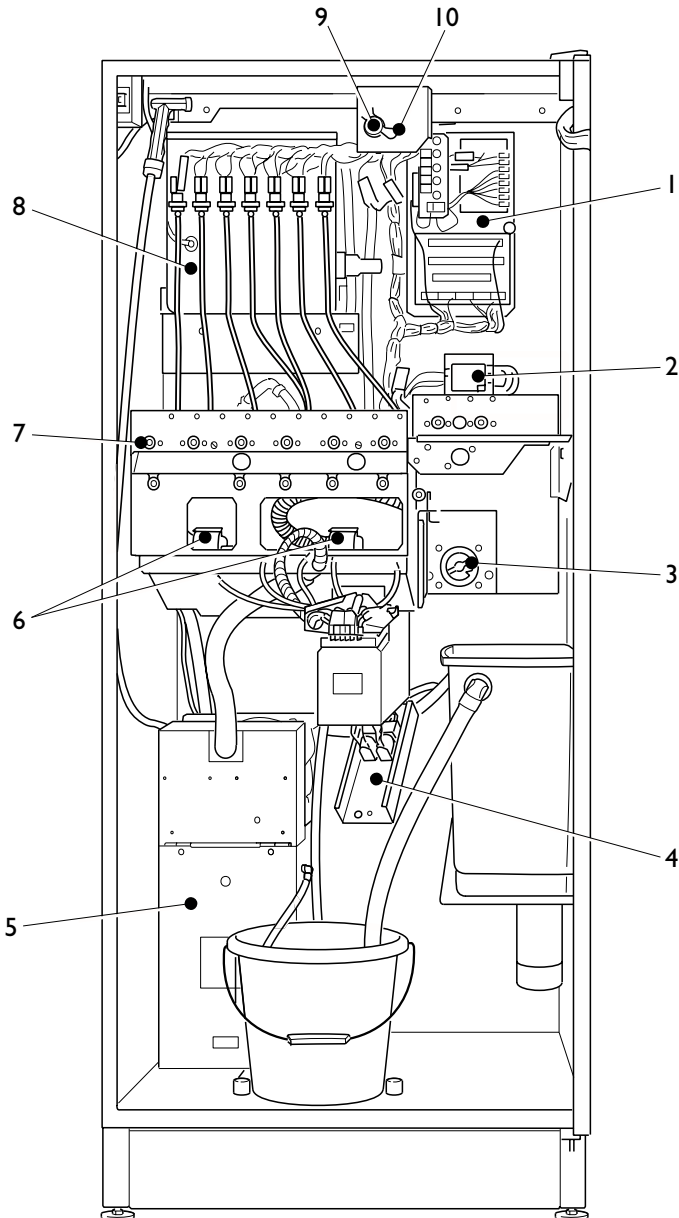
Riocca - Interior



Riocca - Interior

Ref No.	Part No.	Item Description
1	WF01176000	Filter Paper - Freshbrew Models
2	LO05732000	Main Loom
3	(a) PL01848000	Freshbrew Tea Canister - See Page 71
	(b) PL01923000	Freshbrew Coffee Canister - See Page 71
4	MT05093000	Brewer Cover Plate
5	ME01159000	Brewer Assembly (Paper) - See Page 83
6	WO04971001	Freshbrew Waste Bucket - See Page 87
7	1 EPURE CART KIT	Everpure Cartridge Kit - See Page 93
8	PL01172000	Waste Bucket
9	(a) ME07860000	Carbonator, 2 Syrup - See page 97
	(b) ME08581000	Carbonator, 3 Syrup - See page 97
10		Dispense Head Assembly - See Page 67
11		Mixing System - See Page 65
12	PL02145000	Canister - No Agitator - See Page 69
13	PH03674001	Spray Hose
14	EL01157000	Mains On/Off Switch
15	PL01105000	Canister - With Agitator - See Page 69

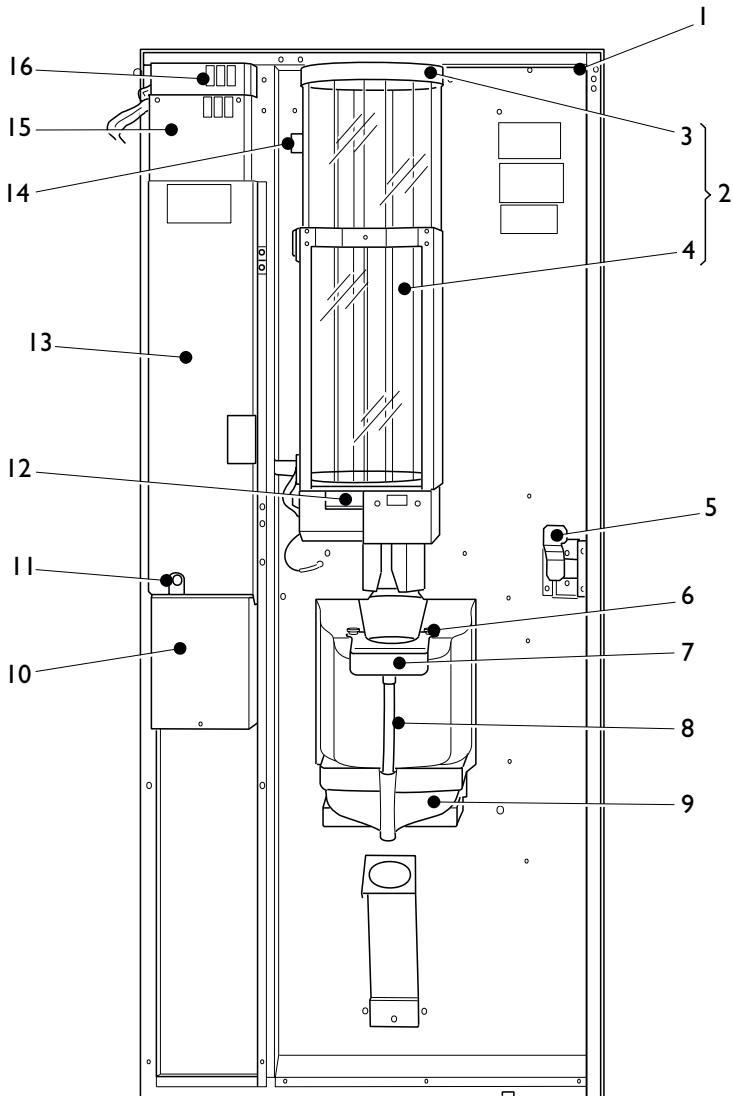
Riocca - Interior (Covers Removed)



Riocca - Interior (Covers Removed)

Ref No.	Part No.	Item Description
1		PSU Assembly - See Page 77
2	EL01154000	Mains Filter - 16A
3		Brewer Module Assembly - See Page 81
4		Inlet Valve Assembly - See Page 89
5	(a) ME05888000	Regency Chiller - See page 95
	(b) ME05645000	Dart Chiller - See Page 99
	(c) ME08268000	Viscount Chiller - See Page 101
6		Fan Assembly - See Page 75
7	(a) MO01102C00	Ingredient Motor Assembly - 80 RPM
	(b) MO01103C00	Ingredient Motor Assembly - 140 RPM
8		Boiler Assembly - See Page 61
9	ME00038000	Bar - Filter Roll
10	ME01849000	'R' Clip

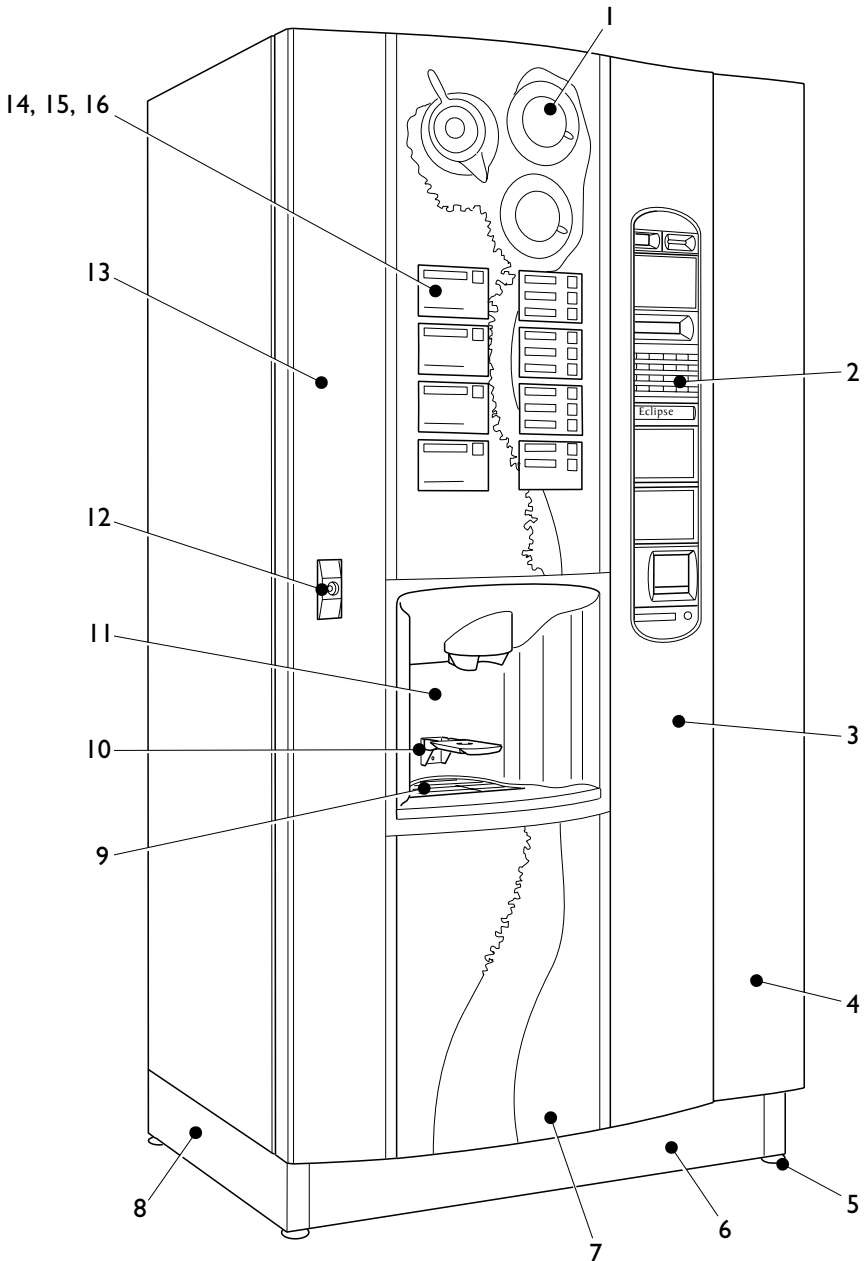
Riocca - Door Assembly



Riocca - Door Assembly

Ref No.	Part No.	Item Description
1	MT00011G00	Door Switch Actuator
2	ME01115000	Cup Turret Assembly
3	PL02713000	Cup Turret Lid
4	ME06500000	Cup Turret Sleeve
5	BA05778000	Door Lock Cam
6	FA01416000	Knurled Thumb Nut
7	(a) PL04863000	Cup Ring - Squat
	(b) PL04864000	Cup Ring - Tall
8	SI01142960	Silicone Pipe - 12 mm
9	PL05728000	Drip Tray
10	MT04811000	Cashbox Assembly
11	(a) ME01859000	Cashbox Lock
	(b) ME03333000	Key 300245 - For Cashbox Lock
12		CDU Assembly - See Page 73
13	MT05136000	Coin Mech Cover
14	EL02219000	On/Off Switch
15		Control Board - See Page 79
16	EL04859000	Switch

Eclipse - Exterior

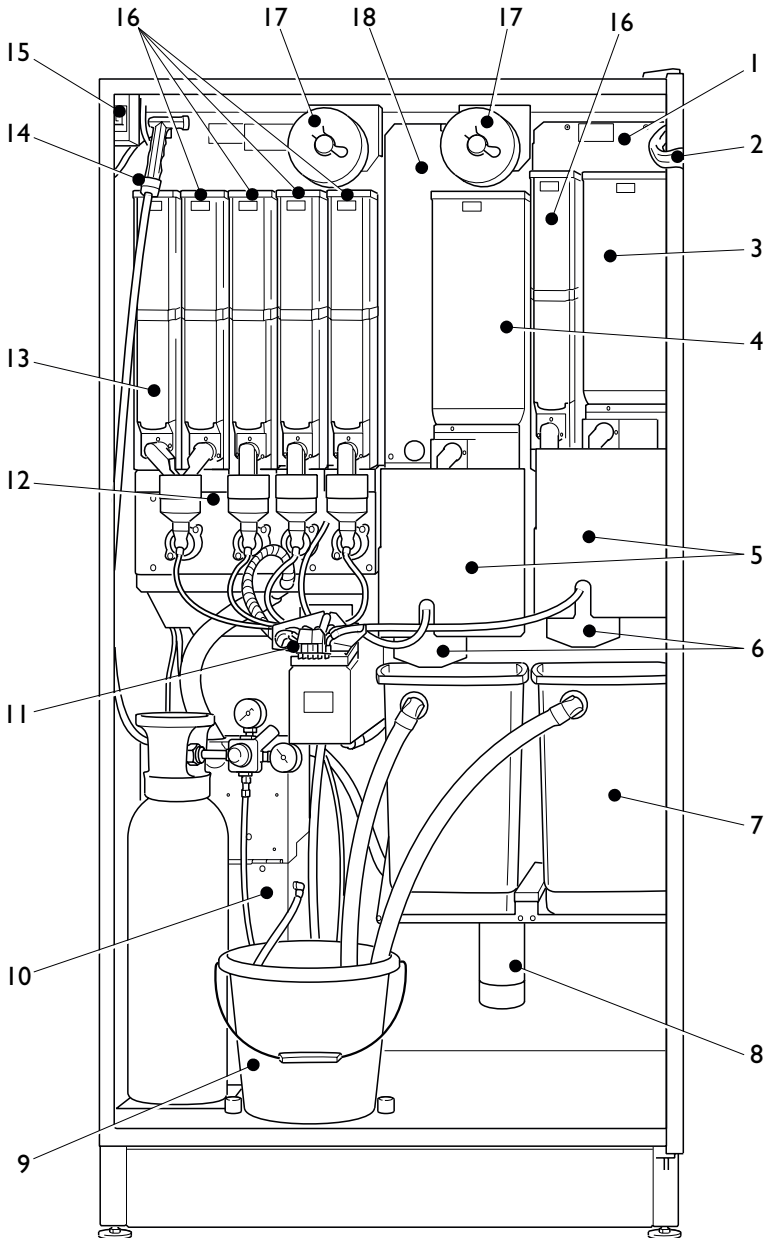


Eclipse - Exterior

Ref No.	Part No.	Item Description
1		Lightbox/graphic assembly - See Page 31
2		Keypad - See Page 33
3	MX05704500	Extrusion - RH*
4	MT05867000	Front Panel*
5	ME01274000	Foot
6	MT05961000	Front Kick Plate
7	(a) GR08598000	Bottom Graphic - Aqua Blue
	(b) GR08595000	Bottom Graphic - Slate Red
	(c) GR08523000	Bottom Graphic - Bean to Cup
	(d) GR05726000	Bottom Graphic - Green
	(e) GR06737000	Bottom Graphic - Dark Blue
8	(a) MT05962000	Side Kick Plate - LH
	(b) MT05963000	Side Kick Plate - RH
9	MT05817000	Drip Tray Grill
10	(a) 1 CUPSTAND KIT	Cup Stand Assembly
	(b) PL04589000	Cup Stand
	(c) MT04593000	Cup Stand Support Bracket
	(c) FA01416000	Knurled Thumb Nut - M5
11	PL05700000	Jug Station
12	(a) ME04005000	Lock Handle
	(b) ME03200000	Lock Barrel
	(c) ME03274000	Key No. 3704
13	MX05705500	Extrusion - LH*
14	(a) PR05821000	Drink Selection Decals
	(b) PR05822000	Drink Selection Decals
	(c) PR05823000	Drink Selection Decals
	(d) PR08637000	Bean to Cup Drink Selection Decals
15	(a) PR05824000	Price Decals - 1 - 30p
	(b) PR05825000	Price Decals - 31p - £1
16	PR05827000	Cold Drink Decals

* Please state colour when ordering this item.

Eclipse - Interior

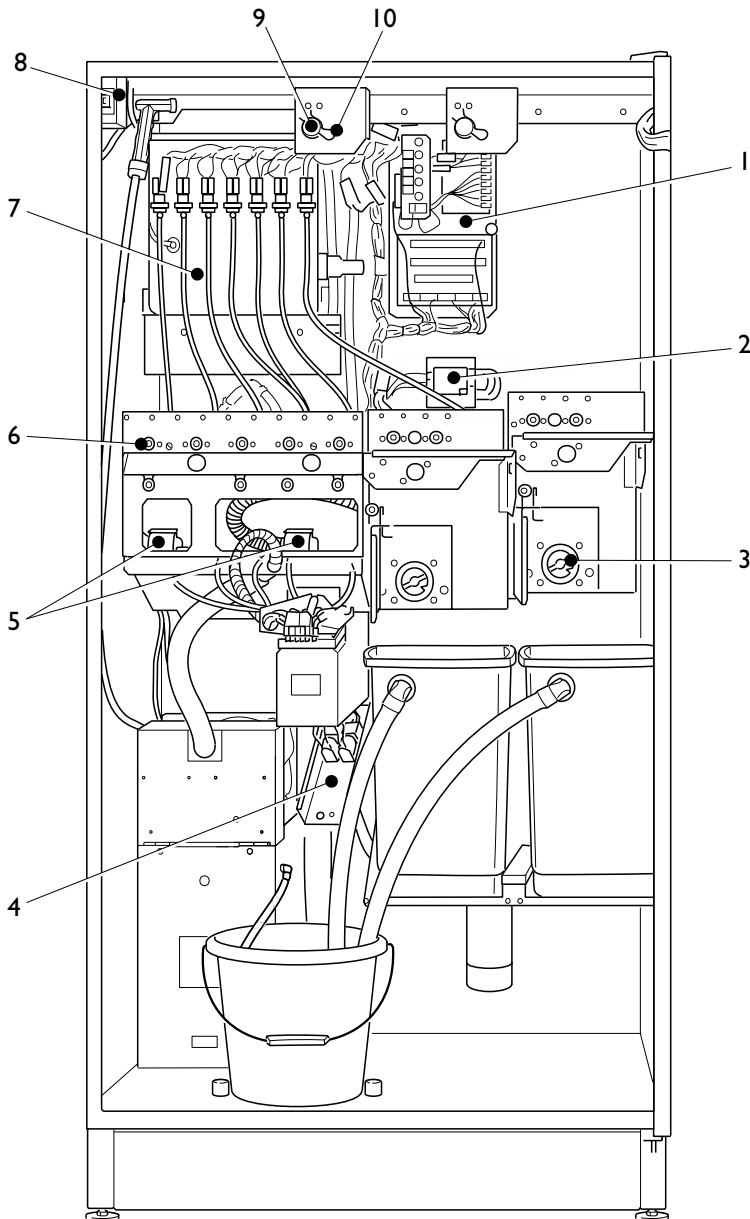


Eclipse - Interior

Ref No.	Part No.	Item Description
1	MT04125000	Boiler Cover - RH
2	LO05732000	Main Loom
3	PL01923000	Freshbrew Coffee Canister - See Page 71
4	PL01848000	Freshbrew Tea Canister - See Page 71
5	MT05093000	Brewer Cover Plate
6	(a) ME01159000	Brewer Assembly (Paper) - See Page 83
7	WO04971001	Freshbrew Waste Bucket - See Page 87
8	1 EPURE CART KIT	Everpure Cartridge Kit - See Page 93
9	PL01172000	Wate Bucket
10	(a) ME05888000	Regency Chiller - See page 95
	(b) ME05727R00	Monarch Carbonator - See page 97
	(c) ME08581000	Viscount Carb/Chiller - See page 101
11		Dispense Head Assembly - See Page 67
12		Mixing System - See Page 65
13	PL02145000	Canister - No Agitator - See Page 69
14	PH03674001	Spray Hose
15	EL01157000	Mains On/Off Switch
16	PL01105000	Canister - With Agitator - See Page 69
17	WF01176000	Filter Paper
18	(a) MT04124000	Boiler Cover - Middle
	(b) MT04122000	Boiler Cover - LH

N.B. Eclipse machines are also supplied as a B2C option. Please see pages 105 to 109 for B2C brewer and module spares.

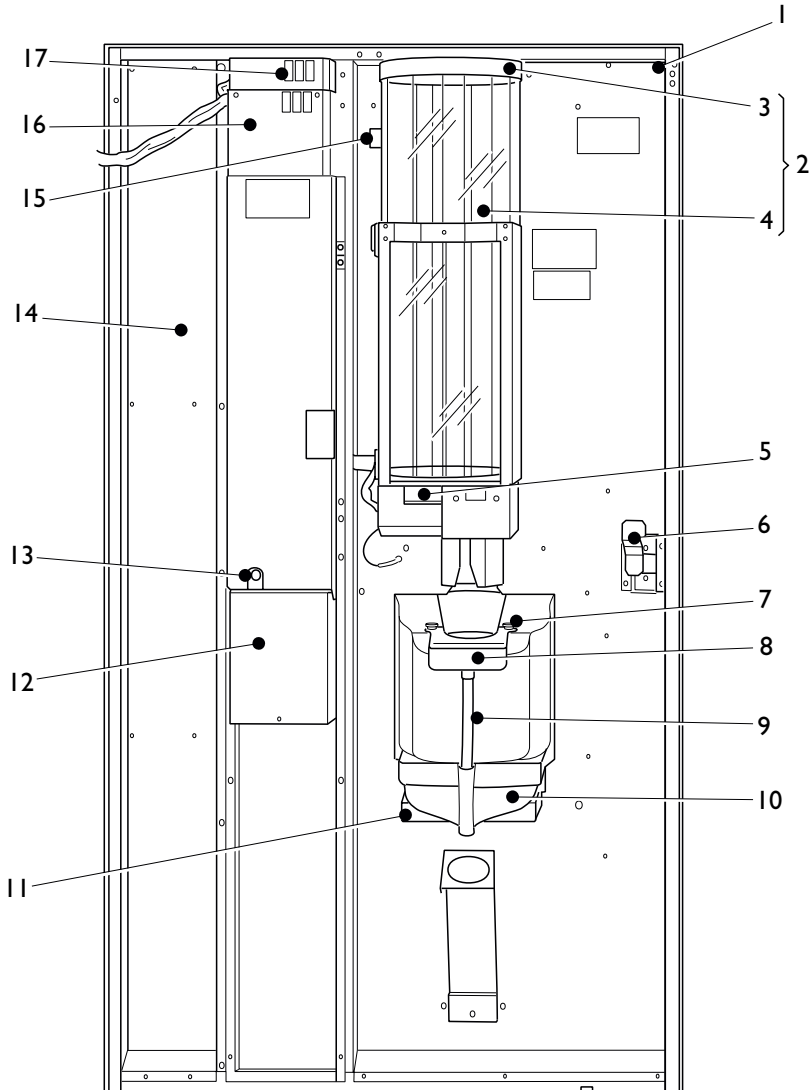
Eclipse - Interior (Covers Removed)



Eclipse - Interior (Covers Removed)

Ref No.	Part No.	Item Description
1		PSU Assembly - See Page 77
2	EL01154000	Mains Filter - 16A
3		Brewer Module Assembly - See Page 81
4		Inlet Valve Assembly - See Page 89
5		Fan Assembly - See Page 75
6	(a) MO01102C00	Ingredient Motor Assembly - 80 RPM
	(b) MO01103C00	Ingredient Motor Assembly - 140 RPM
7		Boiler Assembly - See Page 61
8	MT04140000	Door Switch Mounting Bracket
9	ME00038000	Bar - Filter Roll
10	ME01849000	'R' Clip

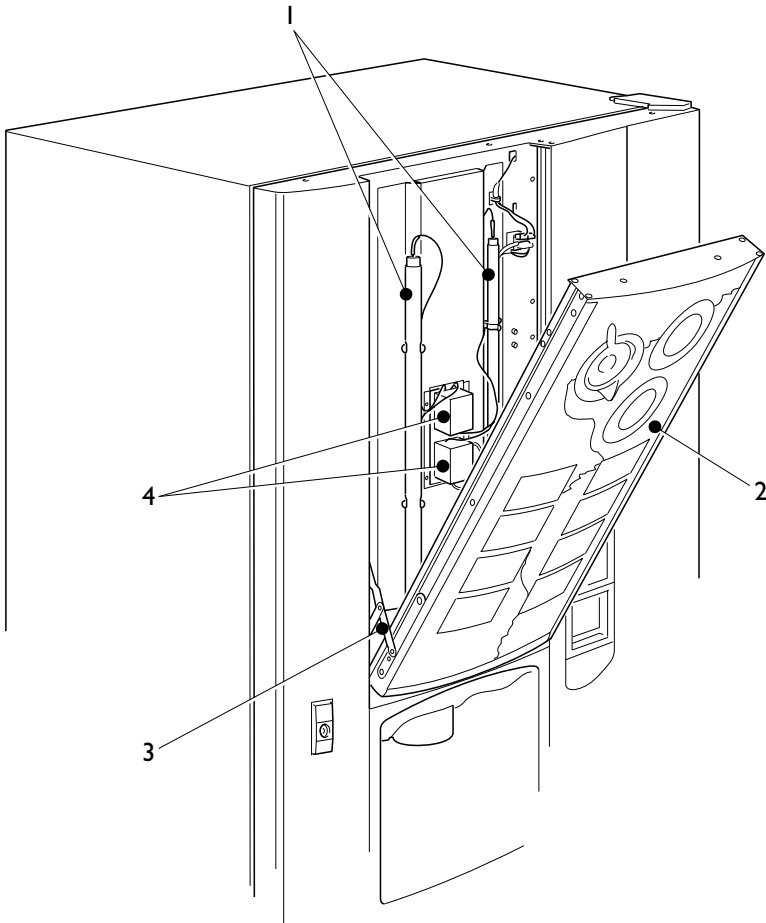
Eclipse - Door Assembly



Eclipse - Door Assembly

Ref No.	Part No.	Item Description
1	MT00011G00	Door Switch Actuator
2	ME01115000	Cup Turret Assembly
3	PL02713000	Cup Turret Lid
4	ME06500000	Cup Turret Sleeve
5		CDU Assembly - See Page 73
6	BA05778000	Door Lock Cam
7	FA01416000	Knurled Thumb Nut
8	(a) PL04863000	Cup Ring - Squat
	(b) PL04864000	Cup Ring - Tall
9	SI01142960	Silicone Pipe - 12 mm
10	PL05728000	Drip Tray
11	(a) ME04926000	Drip Tray Securing Pin
	(b) ME01162000	Spring
	(c) FA01136000	'E' Clip
12	MT04811000	Cashbox Assembly
13	(a) ME01859000	Cashbox Lock
	(b) MT06635000	Cashbox Lock Cam
	(c) ME03333000	Key 300245 - For Cashbox Lock
14	MT05136000	Coin Mech Cover
15	EL02219000	On/Off Switch
16		Control Board - See Page 79
17	EL04859000	Switch

Light Box Assembly - Riocca & Eclipse

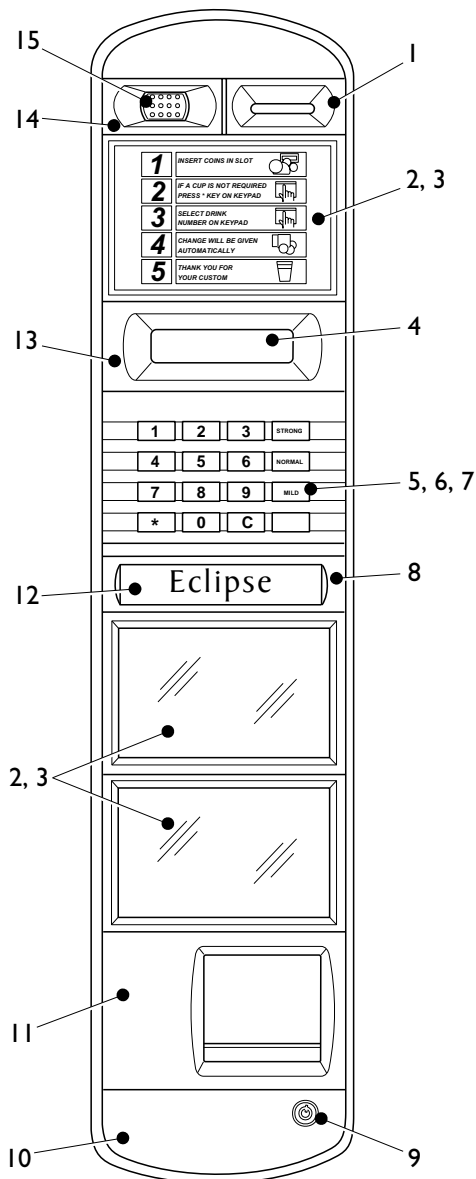


Light Box Assembly - Riocca & Eclipse

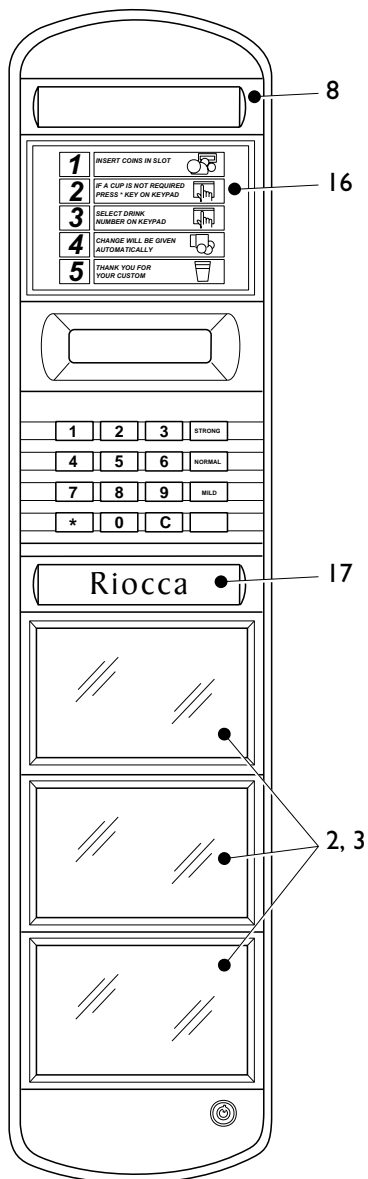
Ref No.	Part No.	Item Description
1	EL05912000	Tube, T5, 13 W, 21"
2	(a) PH06864000	Light Box Assembly - Green Graphic
	(b) PH06865000	Light Box Assembly - Aqua Blue Graphic
	(c) PH07213000	Light Box Assembly - Slate Graphic
	(d) PH07214000	Light Box Assembly - B2C Graphic
3	ME05722000	Friction Hinge
4	1 LIGHTBOX KIT	EC/RI Inverter Upgrade

Selection Panel - Riocca & Eclipse

Coin Option



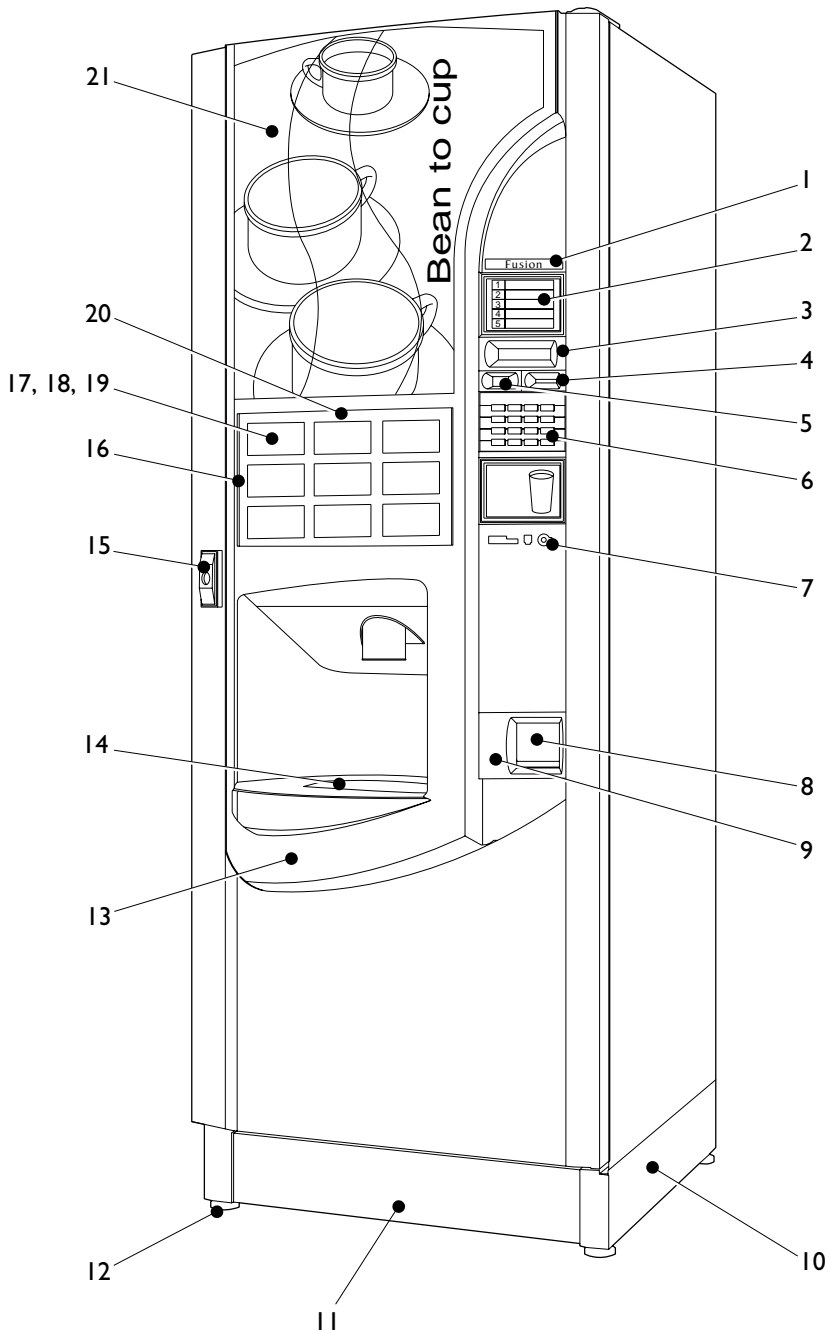
Free Vend Option



Selection Panel - Riocca & Eclipse

Ref No.	Part No.	Item Description
1	PL05184000	Coin Entry Bezel
2	PL05180000	Decal Base Moulding
3	PL05181000	Decal Window
4	EL06157000	LCD Assembly
5	PL05183000	Keypad Cover Moulding
6	MS05190000	Keypad Switch Assembly
7	MS05608000	Rubber Keypad
8	PL05413000	Name Badge Moulding
9	(a) ME05721000	Jug Switch
	(b) ME05919000	Key No. 108 - For Jug Switch
10	PL05702000	Surround Moulding
11	PL05187000	Bezel - Coin Return
12	PR05860000	Domed Badge - Eclipse
13	PL05182000	LCD Surround
14	PL05185000	Coin Reject Button Bezel
15	PL05186000	Coin Reject Button
16	PR05826000	Instruction Decal Set
17	PR05859000	Domed Badge - Riocca

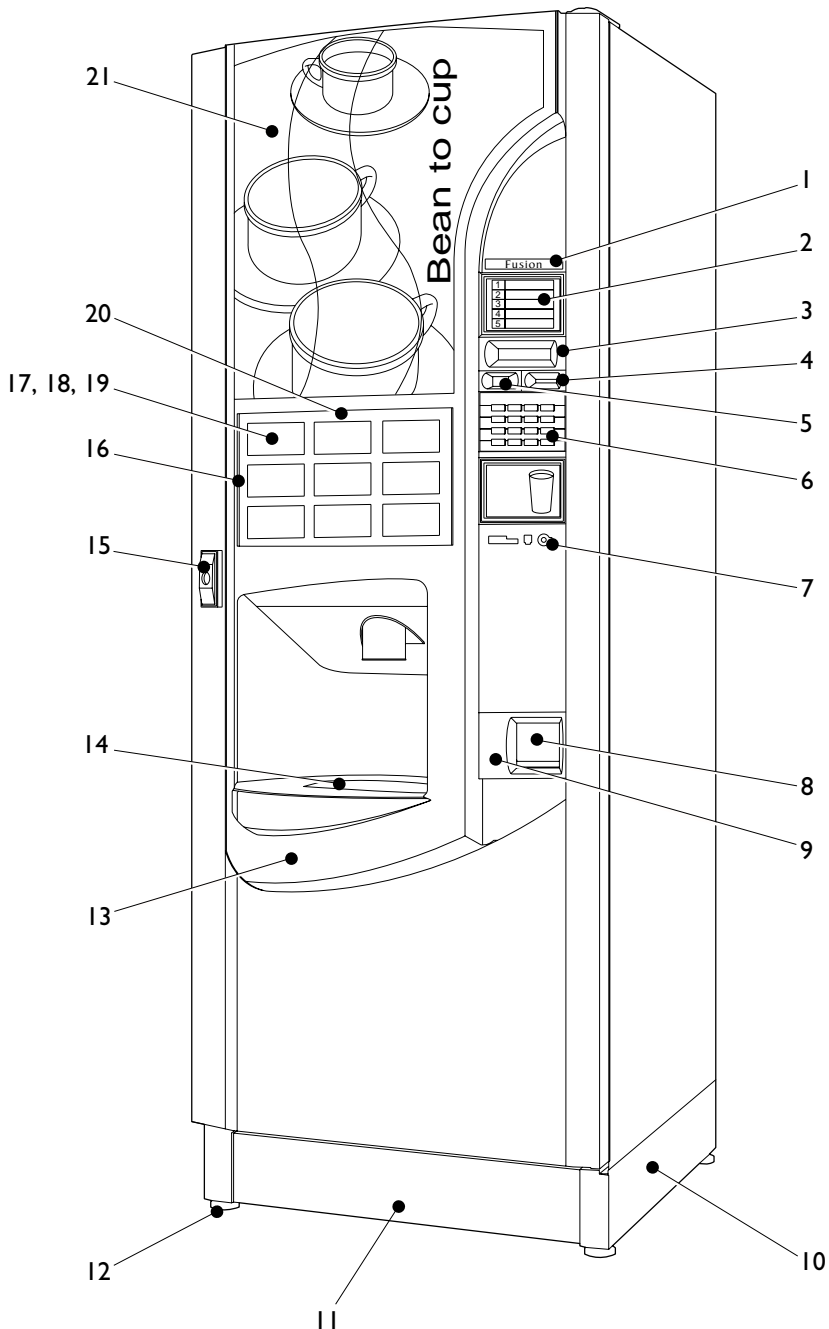
Fusion & Fusion Xtra - Exterior



Fusion & Fusion Xtra - Exterior

Ref No.	Part No.	Item Description
1	(a) PR08564000	Domed Badge - Fusion
	(b) PR07256000	Domed Badge - Fusion Xtra
2	(a) PL05180000	Decal Moulding
	(b) PL05181000	Decal Window
	(c) PR05826000	Instruction Decals
	(d) PR08579000	Instruction Decals - B2C
3	(a) PL05182000	LCD Surround Moulding
	(b) PR05203000	LCD Cover
	(c) EL06157000	LCD Assembly Inc Loom
4	PL05184000	Coin Entry Bezel
5	(a) PL05185000	Coin Reject Bezel
	(b) PL05186000	Coin Reject Button
6	(a) PL05183000	Key Pad Moulding
	(b) MS05608000	Rubber Key Pad
	(c) MS05190000	Switch Membrane
7	(a) ME01168000	Jug Switch Only
	(b) ME00846000	Key, No. 11032 - For Jug Switch
	(c) ME01166000	Jug & Freevend Switch
	(d) ME00842000	Key, No. 70200 - For Jug/Freevend Switch
8	(a) MT05134000	Coin Return Flap
	(b) MT05985000	Coin Return Moulding
9	PL05187000	Coin Return Bezel
10	(a) MT05963000	Side Kick Plate - RH
	(b) MT05962000	Side Kick Plate - LH
11	(a) MT05959000	Front Kick Plate - Fusion
	(b) MT05960000	Front Kick Plate - Fusion Xtra
12	ME01274000	Foot
13	PL08525000	Door Moulding - Fusion
14	(a) PL05728000	Drip Tray
	(b) MT05187000	Drip Tray Grille
15	(a) ME04005000	T Bar Handle Assy
	(b) ME03200000	Lock Barrel
	(c) MT08540000	Lock Cam
16	PL08527000	Selection Panel Cover
17	PR08557000	Decal Selection Carrier
18	(a) PR08558000	Selection Decals - Black
	(b) PR08559000	Selection Decals - Black
	(c) PR08563000	Cold / Soup Decals - Black
	(d) PR08589000	Selection Decals - Blue

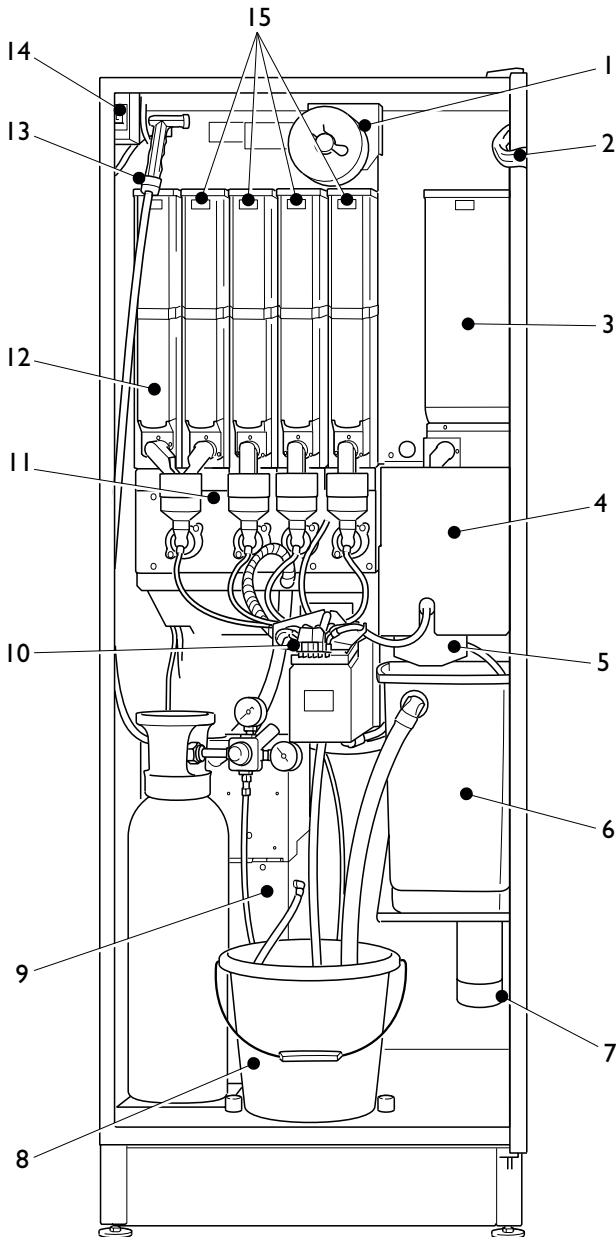
Fusion & Fusion Xtra - Exterior



Fusion & Fusion Xtra - Exterior

Ref No.	Part No.	Item Description
18	(e) PR08590000	Selection Decals - Blue
	(f) PR08586000	Cold / Soup Decals - Blue
19	(a) PR08561000	Price Decals 1 - 30p
	(b) PR08562000	Price Decals 31p - £1.00
20	(a) GR08526000	Selection Panel - Black
	(b) PR08560000	Selection Panel - Slate Red
	(c) PR08635000	Selection Panel - B2C
21	(a) GR08526000	Top Graphic - Aqua Blue
	(b) GR08565000	Top Graphic - Slate Red
	(c) GR08568000	Top Graphic - B2C

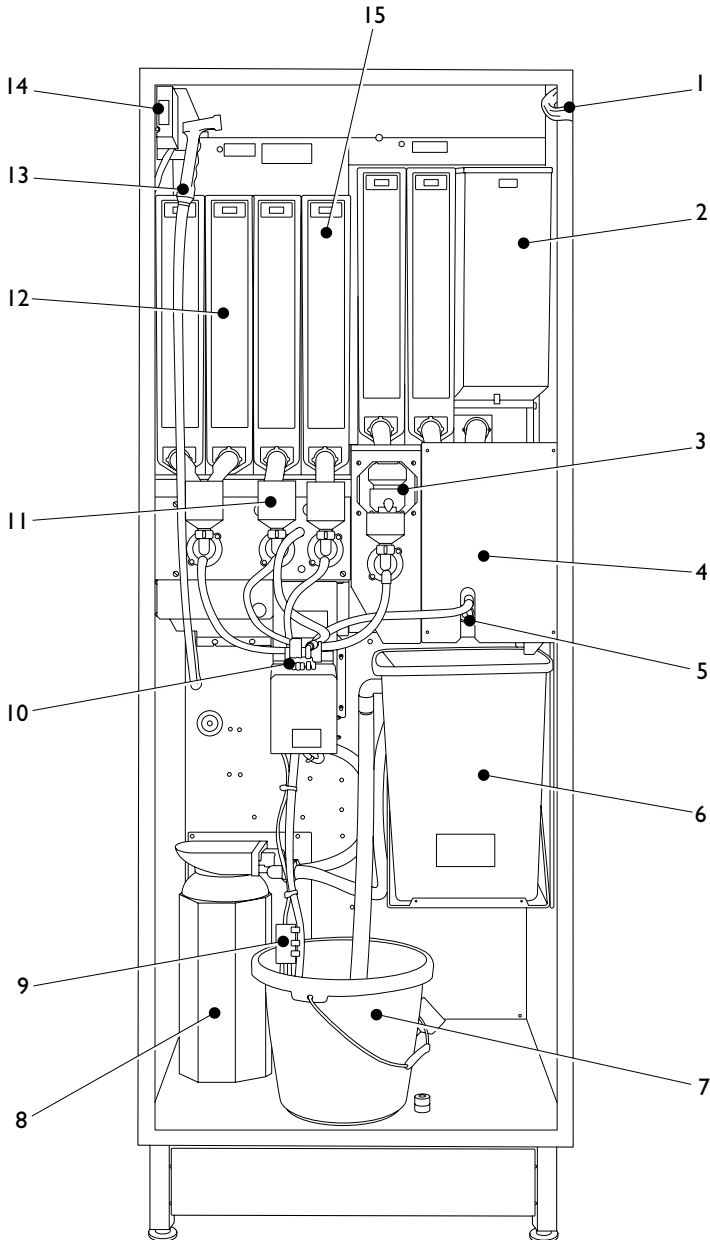
Fusion - Interior Instant & Freshbrew Models



Fusion - Interior Instant & Freshbrew Models

Ref No.	Part No.	Item Description
1	WF01176000	Filter Paper - Freshbrew Models
2	LO06187000	Main Loom
3	(a) PL01848000	Freshbrew Tea Canister - See Page 71
	(b) PL01923000	Freshbrew Coffee Canister - See Page 71
4	MT05093000	Brewer Cover Plate
5	ME01159000	Brewer Assembly (Paper) - See Page 83
6	WO04971001	Freshbrew Waste Bucket - See Page 87
7	1 EPURE CART KIT	Everpure Cartridge Kit - See Page 93
8	PL01172000	Waste Bucket
9	ME07860000	Carbonator, 2 Syrup - See page 101
10		Dispense Head Assembly - See Page 67
11		Mixing System - See Page 65
12	PL02145000	Canister - No Agitator - See Page 69
13	PH03674001	Spray Hose
14	EL01157000	Mains On/Off Switch
15	PL01105000	Canister - With Agitator - See Page 69

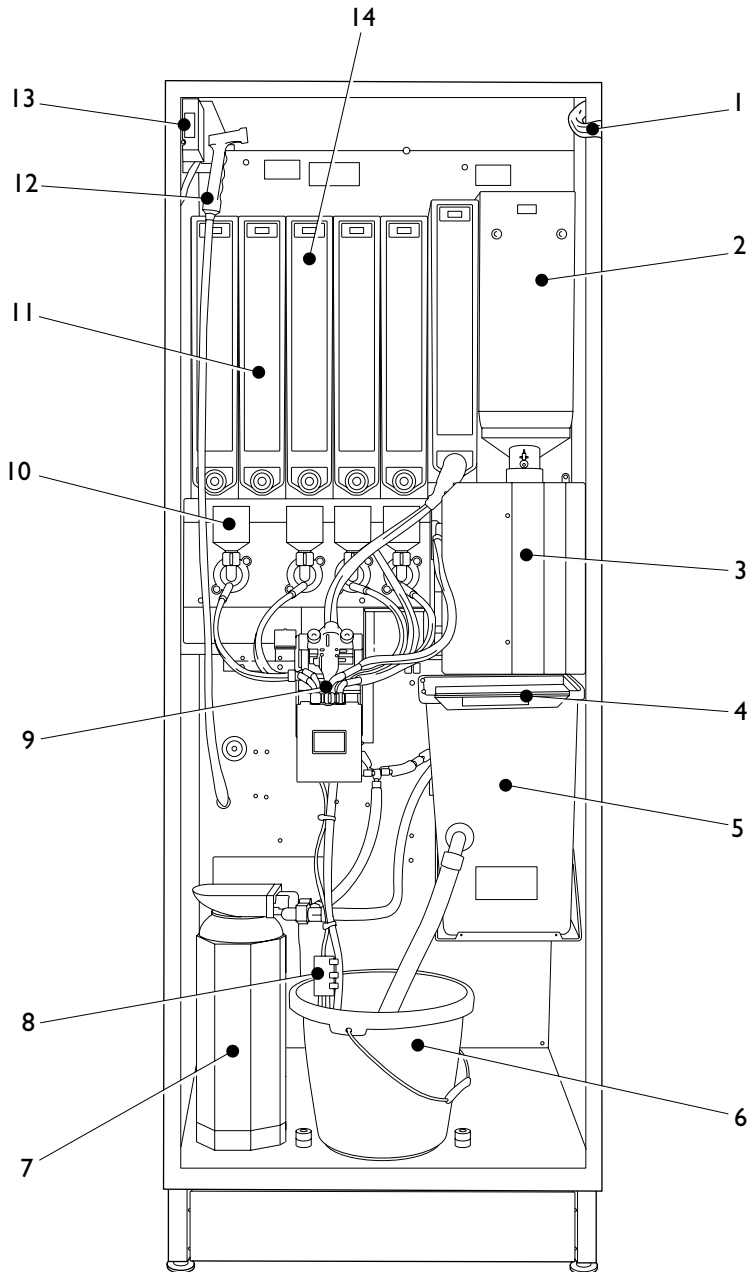
Fusion - Interior Triple Freshbrew Models



Fusion - Interior Triple Freshbrew Models

Ref No.	Part No.	Item Description
1	LO05732000	Main Loom
2	(a) PL01848000	Freshbrew Tea Canister - See Page 71
	(b) PL01923000	Freshbrew Coffee Canister - See Page 71
3		Tea Brewer Assembly - See Page 53
4	MT06571000	Brewer Cover
5	ME07000000	Brewer Assembly (Paperless) - See Page 55
6	WO04971001	Freshbrew Waste Bucket - See Page 87
7	PL01172000	Waste Bucket
8	(a) I BRITAFUSION	Brita Water Filter Kit
	(b) I EPURE CART KIT	Everpure Water Filter Kit
9	WO05396000	Waste Bucket Probe
10		Dispense Head Assembly - See Page 67
11		Mixing System - See Page 65
12	PL02145000	Canister - No Agitator - See page 69
13	HO03674000	Spray Hose Assy
14	EL01157000	Door Switch
15	PL01105000	Canister - With Agitator - See Page 69

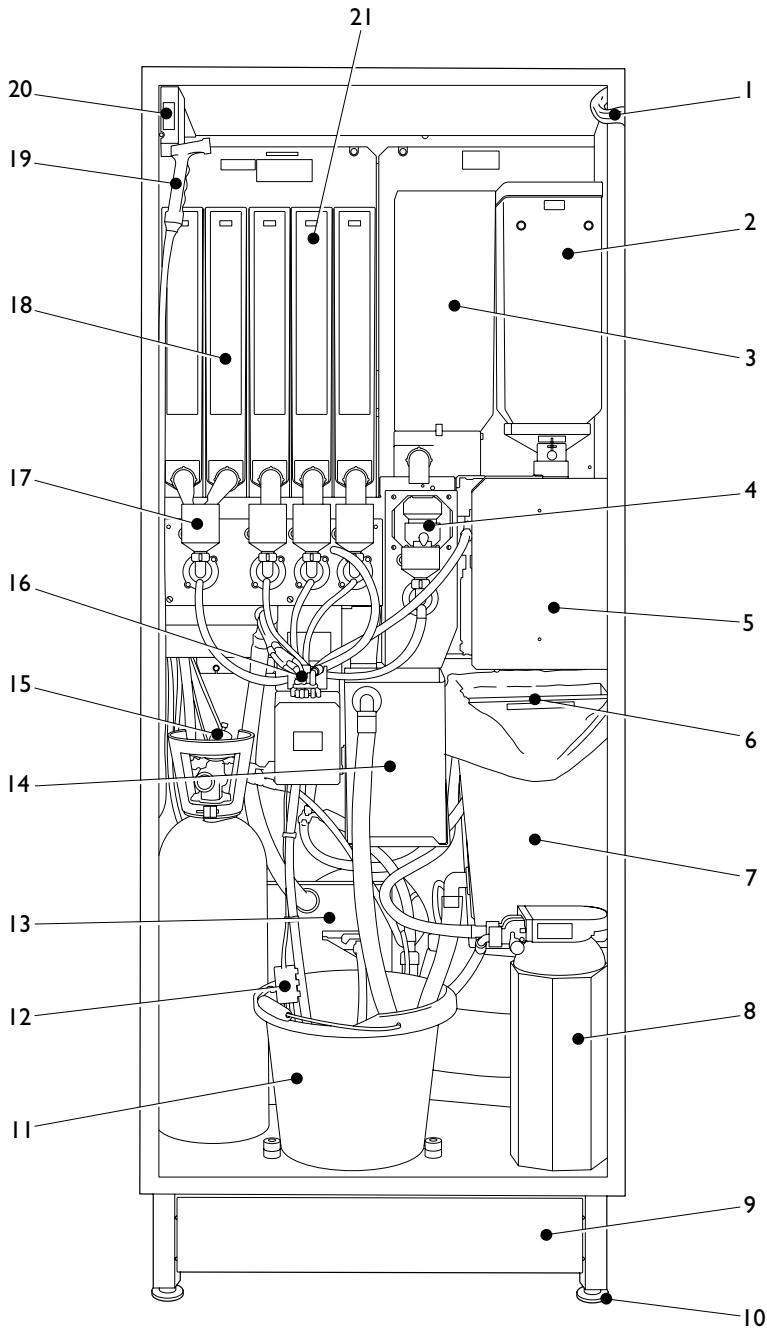
Fusion - Interior Bean 2 Cup Models



Fusion - Interior Bean 2 Cup Models

Ref No.	Part No.	Item Description
1	LO08943000	Main Loom - B2C Models
2	PL08678000	Bean Container c/w lid
3		B2C Module - See Pages 105 & 107
4	MT08620000	Waste Container - Stainless Steel
5	WO08625000	B2C Waste Bucket Assembly
6	PL01172000	Waste Bucket
7	1 BRITAFUSION	Brita Filter Kit
8	WO05396000	Waste Bucket Probe
9		Dispense Head Assembly - See Page 67
10		Mixing System - See Page 65
11	PL02145000	Canister - No Agitator - See Page 69
12	HO03674000	Spray Hose Assembly
13	EL01157000	Door Switch
12	PL01105000	Canister - With Agitator - See Page 69

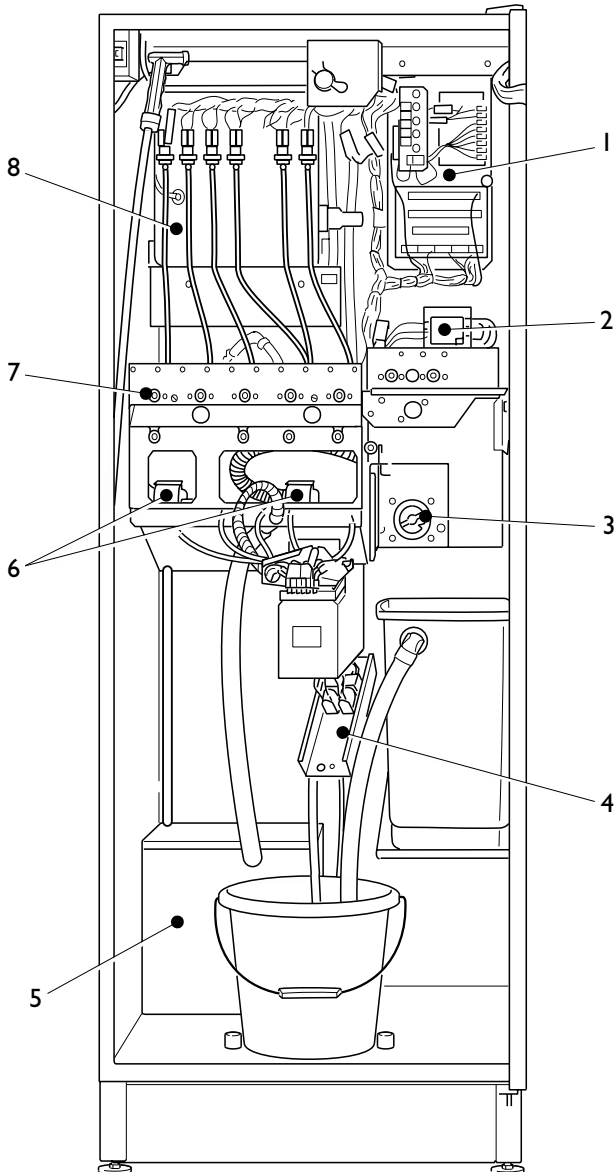
Fusion Xtra - Interior



Fusion Xtra - Interior

Ref No.	Part No.	Item Description
1	LO05730000	Main Loom
2	PL08678000	Bean Container c/w Lid
3	PL01848000	Freshbrew Tea Canister
4		Tea Brewer Assembly - See Page 53
5		B2C Module - See pages 105 & 107
6	MT08620000	Waste Container - Stainless Steel
7	WO07255000	B2C Waste Bucket Assembly
8	I BRITAFUSION	Brita Filter Kit
9	(a) MT05960000	Front Kick Plate
	(b) MT05962000	Side Kick Plate - LH
	(c) MT05963000	Side Kick Plate - RH
10	ME01274000	Foot
11	PL01172000	Waste Bucket
12	WO05396000	Waste Bucket Probe
13		Chiller/Cooler - See Page 101
14	MT07443000	Tea Waste Container
15	ME06734000	CO2 Regulator
16		Dispense Head Assembly - See Page 67
17		Mixing System - See Page 65
18	PL02145000	Canister - No Agitator - See Page 69
19	HO03674000	Spray Hose Assembly
20	(a) EL01157000	Door Switch
	(b) PL06334000	Service Key
21	PL01105000	Canister - With Agitator - See Page 69

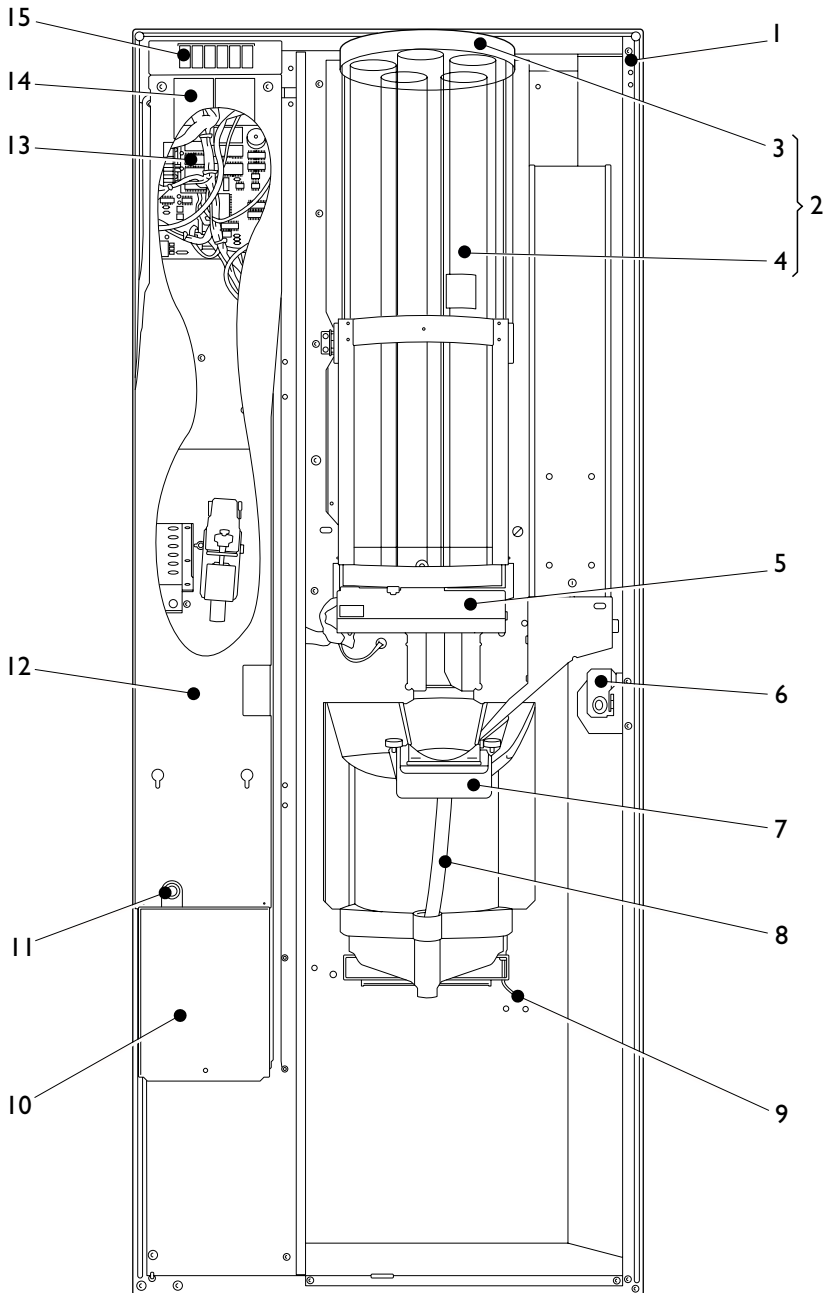
Fusion - Interior (Covers Removed)



Fusion - Interior (Covers Removed)

Ref No.	Part No.	Item Description
1	EL01154000	PSU Assembly - See Page 77
2		Mains Filter - 16A
3		Brewer Module Assembly - See Page 81
4		Inlet Valve Assembly - See Page 89
5		Carbonator/Cooler Assembly - See Page 101
6		Fan Assembly - See Page 75
7	(a) MO01102C00	Ingredient Motor Assembly - 80 RPM
	(b) MO01103C00	Ingredient Motor Assembly - 140 RPM
8		Boiler Assembly - See Page 61

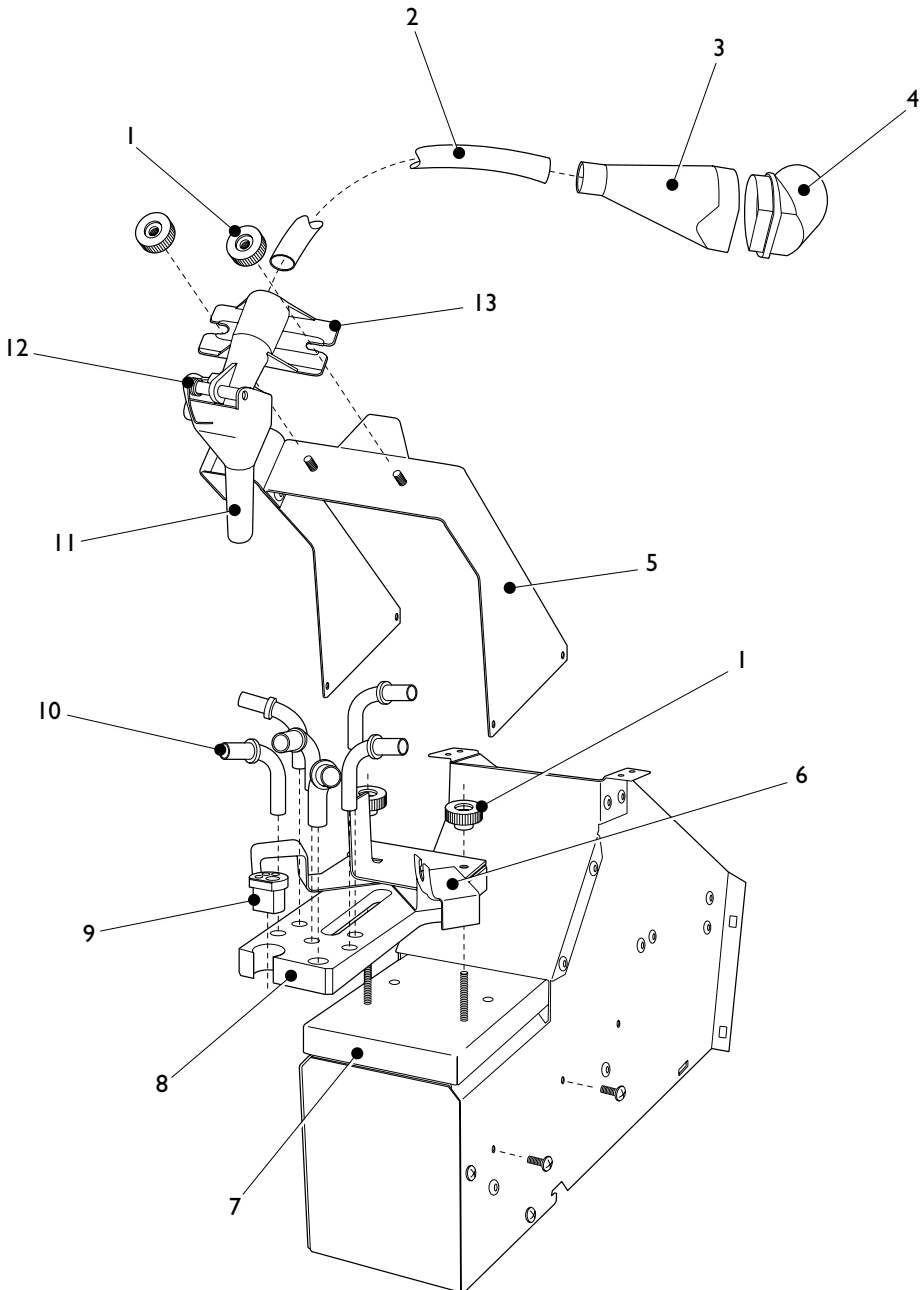
Fusion - Door Assembly



Fusion - Door Assembly

Ref No.	Part No.	Item Description
1	MT00011G00	Door Switch Actuator
2	ME01115000	Cup Turret Assembly
3	PL02713000	Cup Turret Lid
4	ME06500000	Cup Turret Sleeve
5		CDU Assembly - See Page 73
6	(a) MT08540000	Door Lock Cam
	(b) ME04005000	T Bar Handle Assembly
	(c) ME03200000	Lock Barrel
7	(a) PL04863000	Cup Catcher, Squat
	(b) PL04864000	Cup Catcher, Tall
	(c) FA01416000	Thumb Nut, M5
8	SI01142960	Silicon Tube, 12mm ID
9	(a) ME04926000	Retaining Bar
	(b) ME01162000	Spring
	(c) FA01136000	'E' clip 5mm
10	MT04811000	Cash Box
11	(a) ME01859000	Cash Box Lock
	(b) ME03333000	Key, No. 300245 - For Cash Box Lock
	(c) MT06635000	Cash Box Lock Cam
12	(a) MT08578000	Coin Mechanism Cover
	(b) MT08547000	MPU Cover
13		MPU Assembly - See Page 79
14	(a) PR05445000	Switch Decal 1 – 6
	(b) PR05739000	Switch Decal 7 – 12
15	EL04859000	Switch

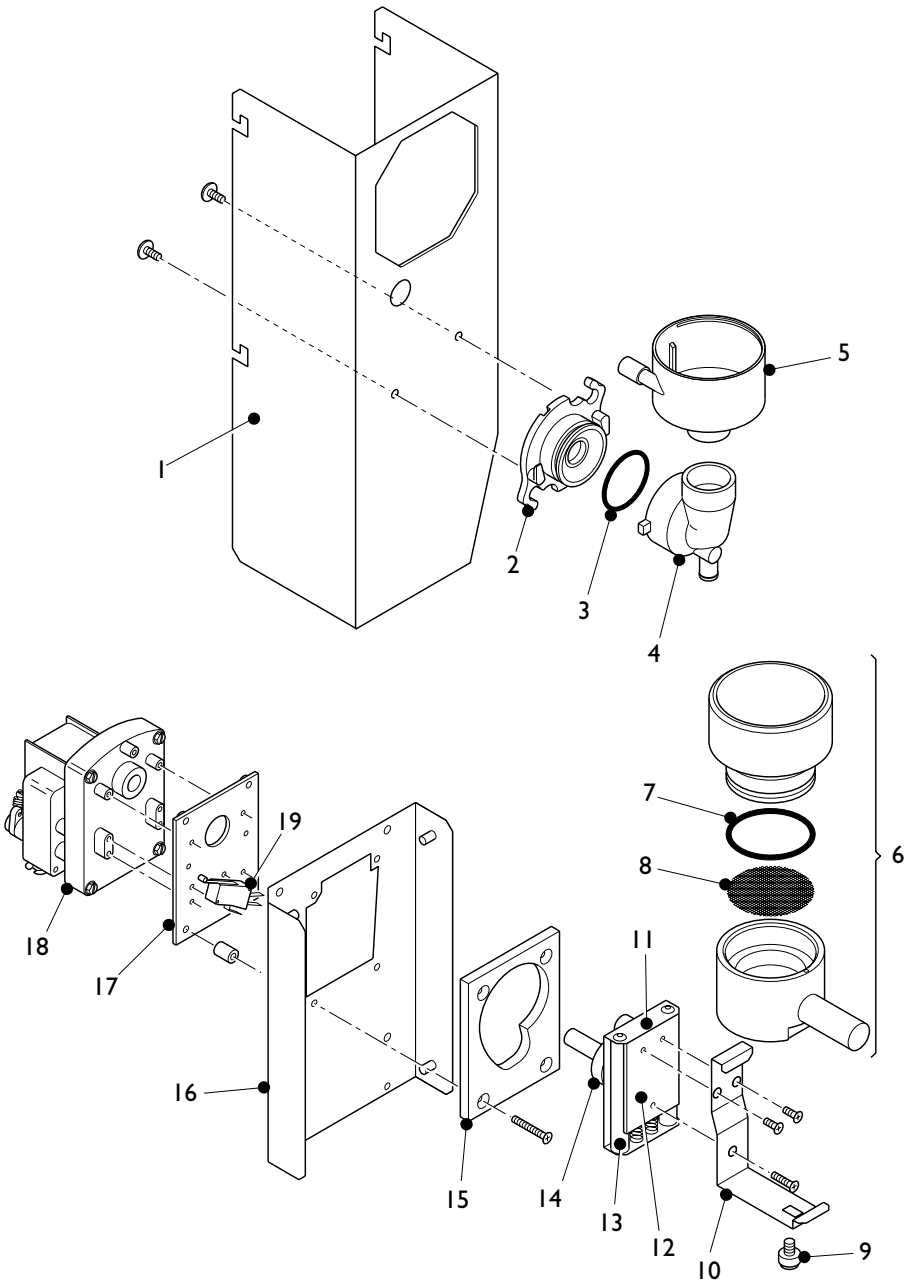
Sugar Dispense Module - Fusion B2C



Sugar Dispense Module - Fusion B2C

Ref No.	Part No.	Item Description
1	FA01416000	Thumb Nut - M5
2	HO08513000	Dispense Tube
3	PL08504000	Canister Outlet - Lower
4	PL08503000	Canister Outlet
5	MT08611000	Sugar Spout Support Bracket
6	(a) MT08616000	Sugar Striker
	(b) MT08615000	Pipe Locator
7		Moving Dispense Head - See Page 67
8	ME08501000	Sugar Dispense Block
9	PH05501000	Nozzle Set, Moulded
10	(a) ME04279000	Dispense Spout, 8mm
	(b) ME04278000	Dispense Spout, 9.5mm
11	PL08506000	Sugar Dispense Spout
12	ME08502000	Sugar Chute Spring
13	PL08505000	Sugar Spout

Tea Brewer Assembly - Fusion Triple & Fusion Xtra

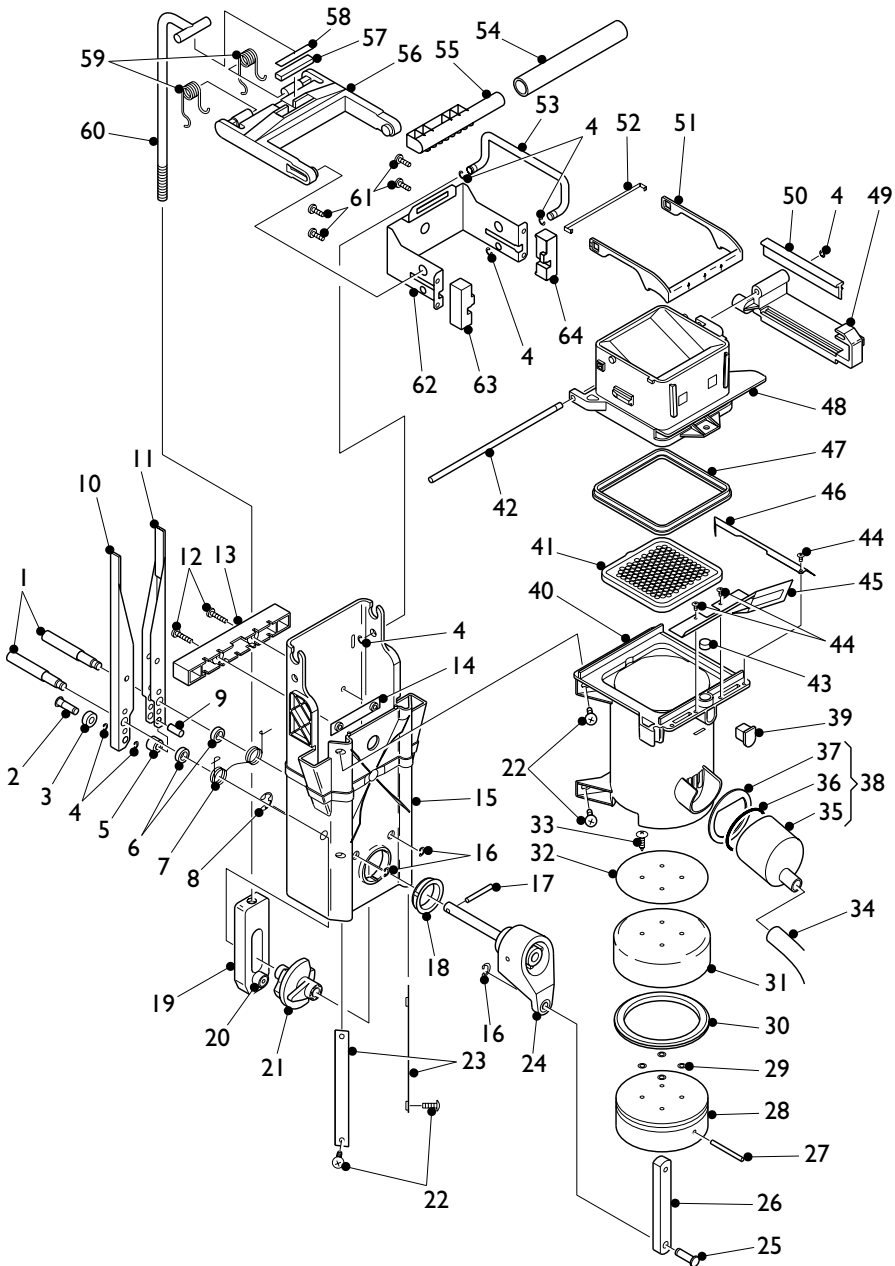


Tea Brewer Assembly - Fusion Triple & Fusion Xtra

Ref No.	Part No.	Item Description
	I TPOT FUSION X	Teapot Assembly - Fusion Xtra
	I TPOT FUTRIPLE	Teapot Assembly - Fusion Triple F/brew
I	(a) MT07271000	Teapot Cover - Fusion Xtra
	(b) MT06573000	Teapot Cover - Fusion Triple F/brew
	(c) MT06574000	Teapot Cover Ext - Fusion Triple F/brew*
2	PLO1972000	Whipper Base - Blind
3	SI01295000	'O' Ring
4	PL02275000	Impeller Housing
5	PLO1967000	Mixing Bowl
6	PH00653000	Teapot Assembly
7	SI01669000	'O' Ring - 45mm ID
8	ME00658001	Mesh Screen
9	FA01855000	Thumb Screw - M6
10	MT00593000	Retaining Bracket
11	ME05426000	Pivot Plate
12	ME00598000	Slider Block
13	ME00596000	Bar
14	ME00597000	Switch Cam
15	ME00651000	Teapot Cam Plate
16	(a) MT07272000	Teapot Mounting Plate - Fusion Xtra
	(b) MT08969000	Teapot Mounting Plate Fusion Triple F/brew
17	MT00594A00	Mounting Bracket
18	MO05425000	Motor/Gearbox Assembly
19	EL01148000	Micro Roller Switch

* Not Illustrated

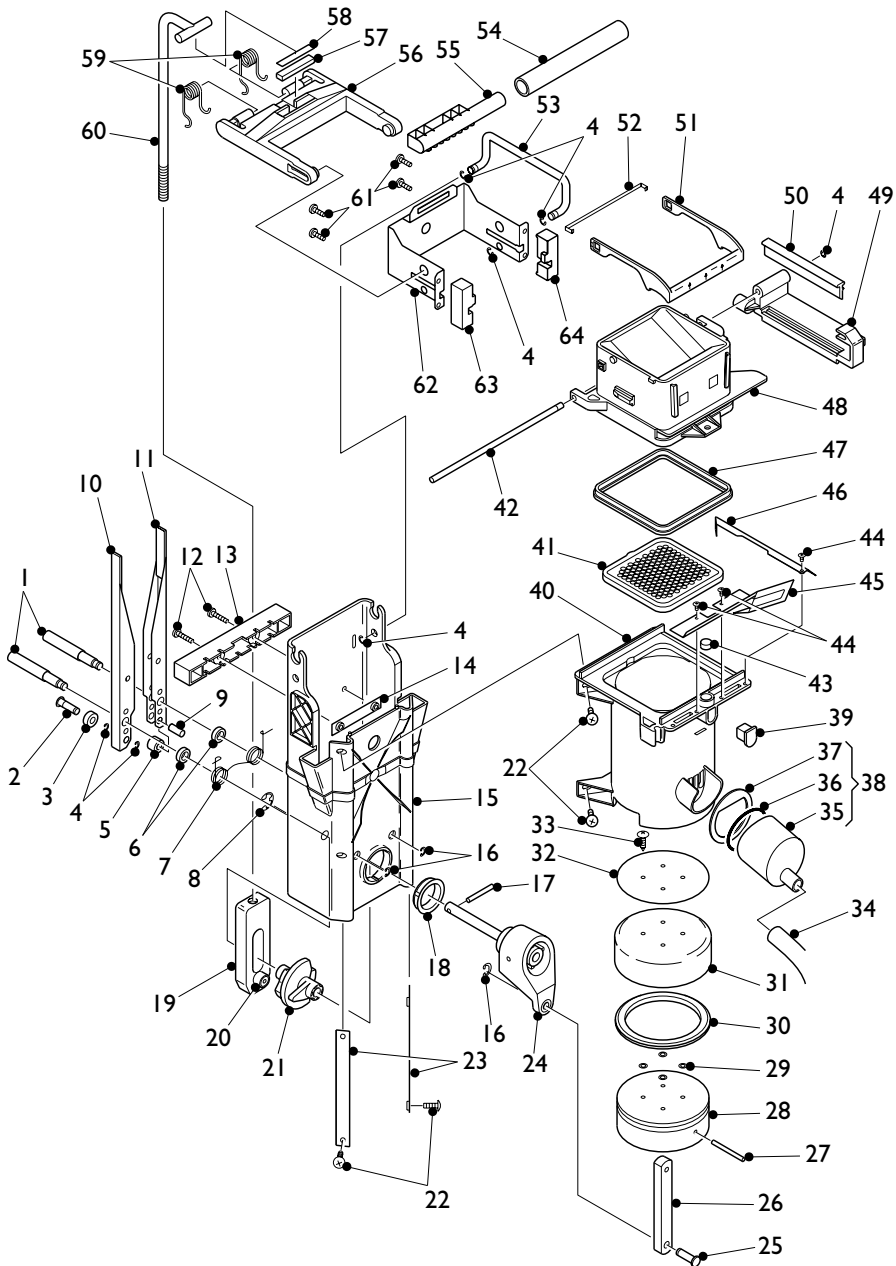
Paperless Brewer Assembly Fusion Triple Freshbrew



Paperless Brewer Assembly Fusion Triple Freshbrew

Ref No.	Part No.	Item Description
	ME07000000	Brewer Complete
1	ME07448000	Wiper Arm Shaft
2	ME07449000	Wiper Arm Pin
3	ME07450000	Bearing
4	FA07668000	Retaining Ring
5	ME07451000	Roller
6	ME07452000	Wiper Arm Spacer
7	ME07453000	Wiper Arm Spring
8	FA07149000	Retaining Ring
9	ME07454000	Unwipe Arm Pin
10	ME07455000	Wiper Arm
11	ME07456000	Unwipe Arm
12	FA07669000	Screw, 8-32 x $\frac{3}{4}$
13	ME07457000	Support Bracket - Rear
14	ME07458000	Support Plate
15	ME07459000	Mainframe
16	FA07670000	Retaining Ring
17	ME03955000	Spring Pin - $\frac{3}{16}$ x $1\frac{1}{4}$
18	ME07460000	Bearing Crank Arm
19	ME07245000	Housing c/w Bearing
20	ME03962000	Bearing
21	ME07461000	Cam
22	ME06140000	Screw
23	ME07462000	Brewer Chamber Retaining Plate
24	ME07463000	Crank Arm Assembly
25	ME07671000	Crank Arm Pin
26	ME07464000	Connecting Rod
27	FA08311000	Spring Pin
28	ME07465000	Piston
29	SI07672000	'O' Ring
30	SI07466000	Rubber Seal
31	ME07673000	Teflon Seal
32	ME07467000	Piston Top Plate
33	FA07674000	Screw
34	SI01171960	Silicone Pipe
35	PL06075001	Outlet Adaptor
36	FA01216000	'O' Ring - Outlet

Paperless Brewer Assembly Fusion Triple Freshbrew (Cont'd)

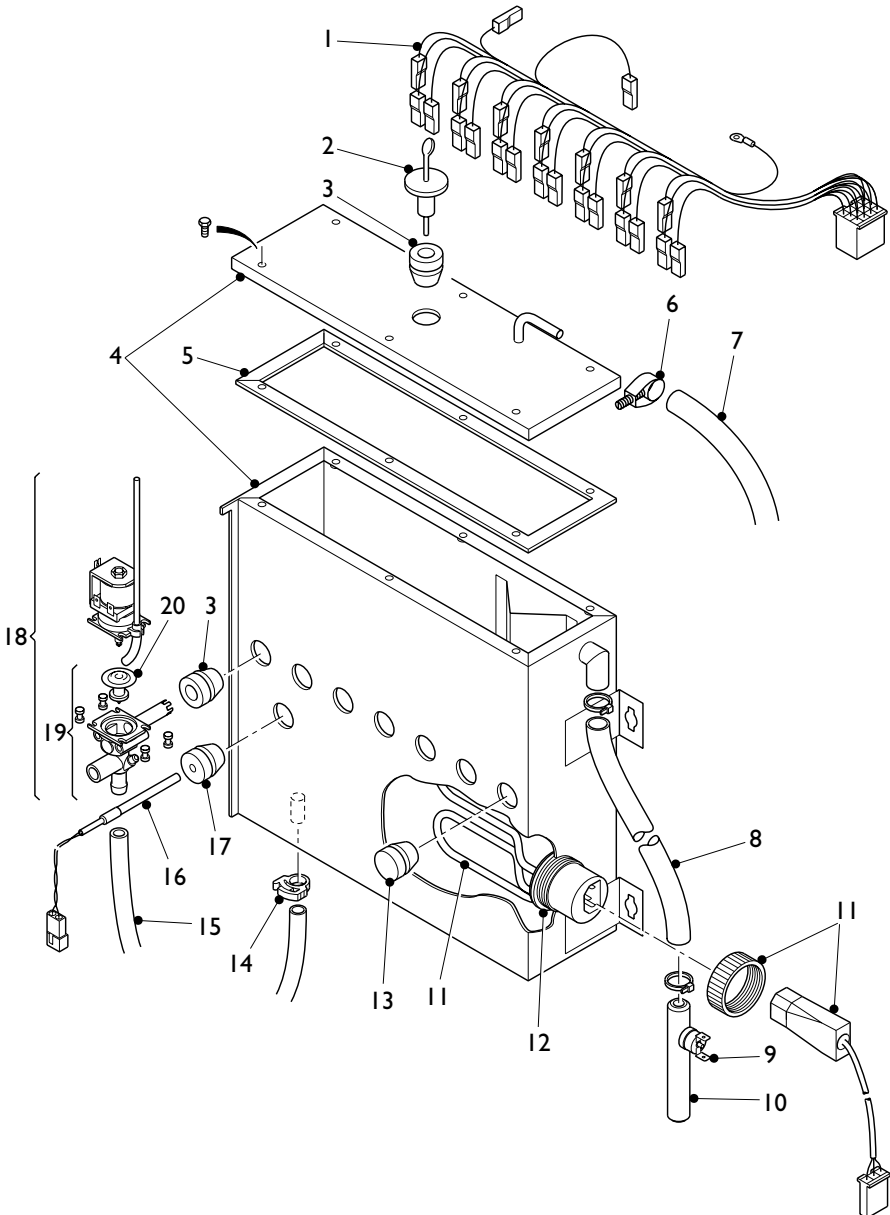


Paperless Brewer Assembly Fusion Triple Freshbrew (Cont'd)

Ref No.	Part No.	Item Description
37	SI06077000	Outlet Adaptor Seal
38	SA06075000	Outlet Adaptor Assembly
39	ME08285000	Brewer Chamber Vent Plug
40	PL07675000	Brewer Chamber
41	PL07155000	Mesh Filter
42	ME07148000	Pin
43	SI07468000	Vent Seal
44	FA07676000	Screw
45	ME07469000	Deflector - Front
46	ME07470000	Deflector - Side
47	SI07150000	Brewer Seal
48	PL07677000	Brewer Chamber
49	PL07678000	Wiper Carriage
50	SI07152000	Wiper
51	PL07154000	Latch
52	ME07471000	Spring Clip - Latch
53	ME07472000	Bar
54	SI07642000	Silicone Pipe
55	PL07153000	Water Outlet Tube
56	ME07473000	'H' Frame
57	ME07474000	Spacer - Rubber
58	ME07679000	Shim
59	ME07475000	Spring
60	ME07476000	Threaded Rod
61	FA07680000	Screw
62	ME07477000	Brewer Chamber Support Bracket
63	ME07478000	Latch Block - LH
64	ME07479000	Latch Block - RH

Common Parts

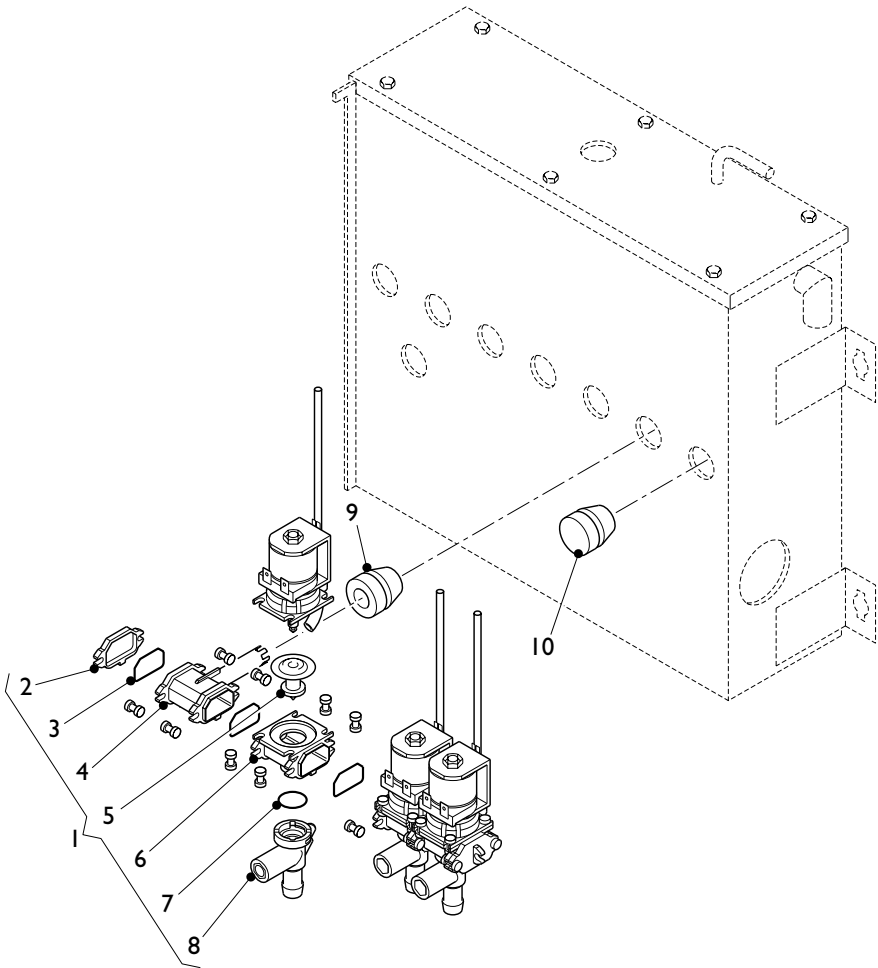
Boiler Assembly



Boiler Assembly

Ref No.	Part No.	Item Description
1	LO04051000	Boiler Loom
2	ME04550000	Level Probe Assembly
3	VA03377000	Valve Seal
4	BA05611000	Boiler & Lid Assembly
5	SI03052960	Boiler Lid Seal
6	FA03227000	Hose Clip
7	HO06632000	Hose - Aquavend 10
8	SI01142960	Silicone Pipe - 12mm i.d.
9	EL03378000	Temperature Cut Out
10	ME00043000	Temperature Cut Out Holder
11	PH02876002	2.4kW Element c/w Lock Nut and Loom
12	ME01294000	Element Seal
13	SI082760000	Boiler Seal
14	FA01185000	Snapper Clip 30
15	SI01171960	Silicone Pipe - 8mm i.d.
16	EL03112000	Thermistor Probe
17	SI06340000	Thermistor Probe Seal
18	VA04031000	Dispense Valve
19	VA01838A00	Valve Repair Kit
20	VA05885000	Valve Membrane Seal

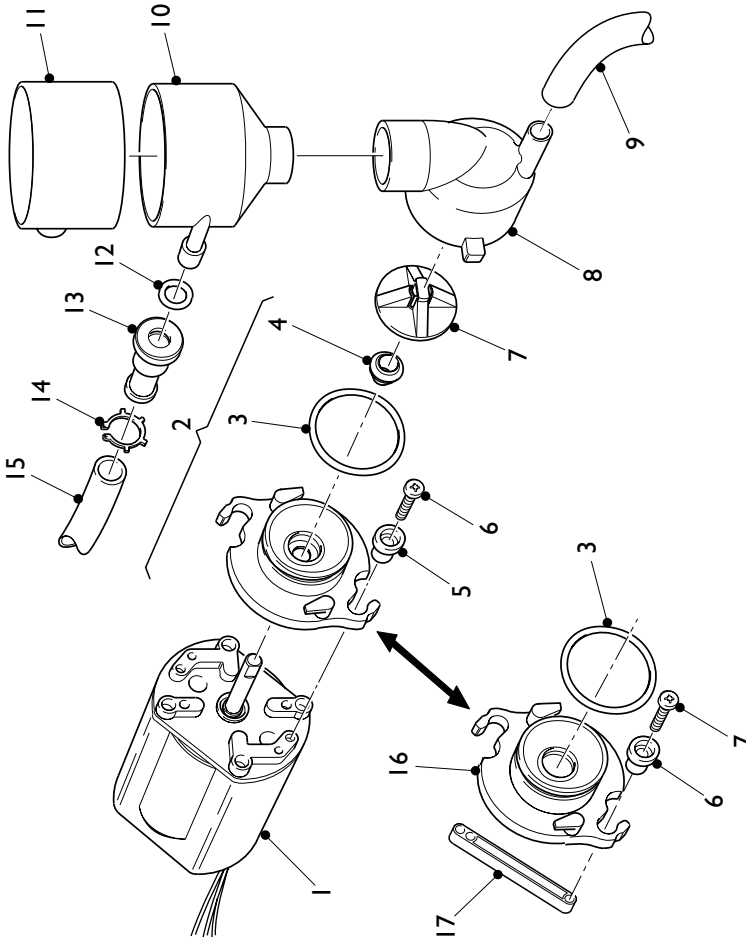
3 Way Dispense Valve Assembly



3 Way Dispense Valve Assembly

Ref No.	Part No.	Item Description
1	VA05896000	3 Way Dispense Valve
2	VA06527000	End Cap
3	VA06523000	Valve Seal
4	VA06862000	Valve Inlet
5	VA05885000	Valve Membrane Seal
6	VA06526000	Valve Body
7	VA06524000	'O' Ring - Valve Outlet
8	VA06525000	Valve Outlet c/w Flow Adjuster
9	VA03377000	Valve Seal
10	SI08276000	Boiler Seal

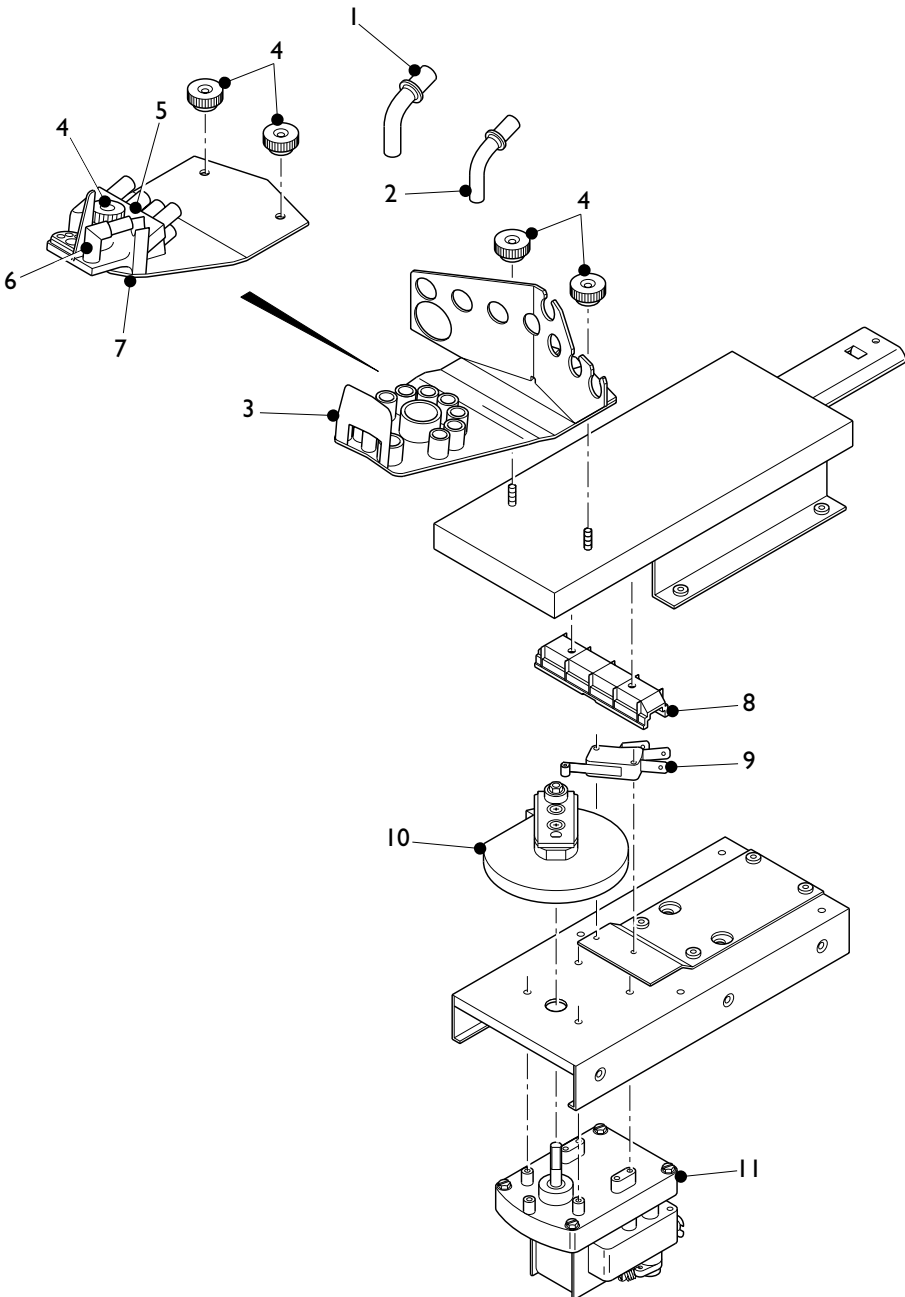
Mixing System



Mixing System

Ref No.	Part No.	Item Description
1	MO01983000	Whipper Motor
2	PL01971000	Whipper Base c/w 'O' Ring and Seal
3	SI01295000	'O' Ring
4	SI01986000	Whipper Shaft Seal
5	PL01974000	Cap
6	PL01973000	Screw
7	PL01970000	Impeller
8	PL02275000	Impeller Housing
9	SI01171960	Silicone Pipe
10	PL01967000	Mixing Bowl
11	PL01966000	Steam Trap
12	FA01134000	Bowl Adaptor Seal
13	PL00066000	Bowl Adaptor
14	FA01135000	Circlip
15	SI04345960	Silicone Pipe
16	PL01972000	Whipper Base - Blind
17	PL02278000	Fixing Strap
	PL02008000	Whipper Plate Boss - Not Illustrated

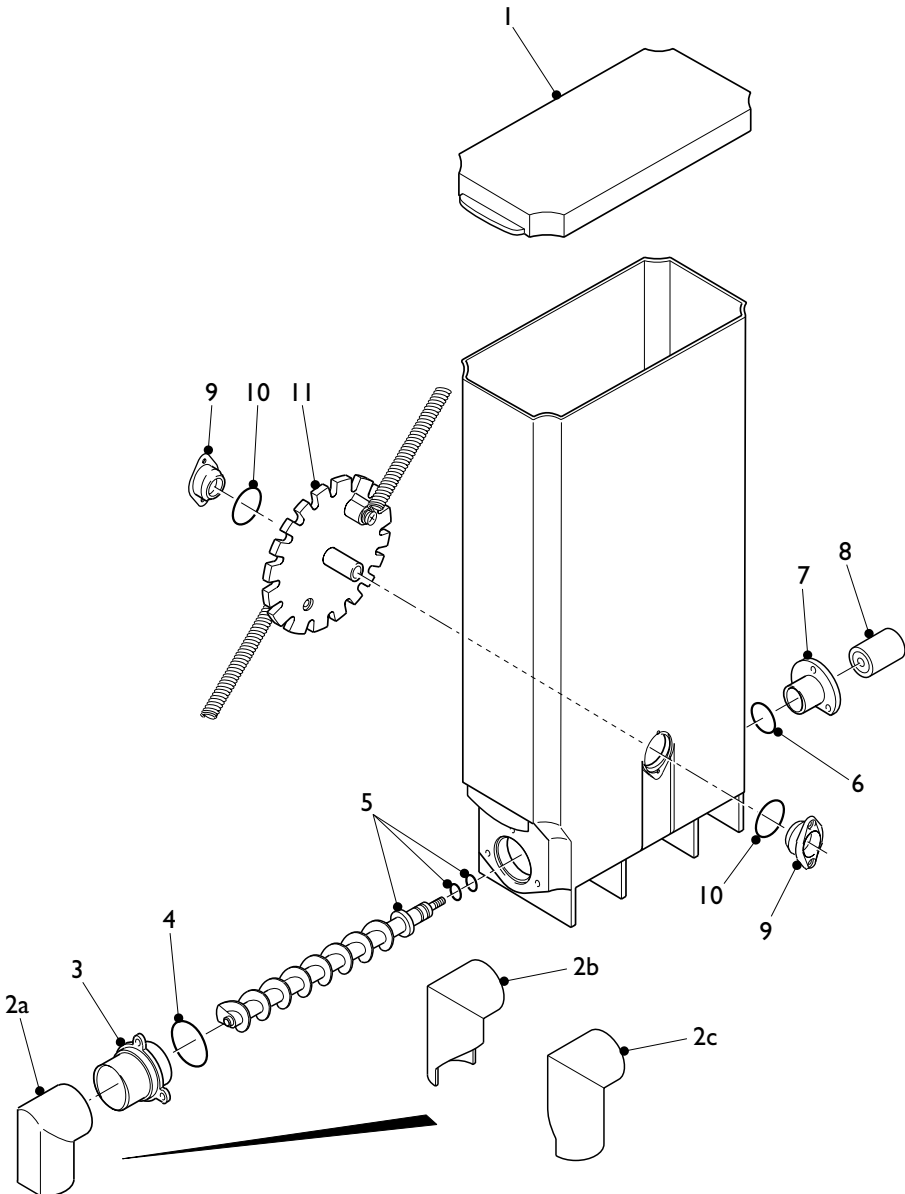
Dispense Head Assembly



Dispense Head Assembly

Ref No.	Part No.	Item Description
1	ME04278000	Dispense Spout, 9.5mm - Early Machines
2	ME04279000	Dispense Spout, 8mm - Early Machines
3	MT05901000	Dispense Head Plate - Early Machines
4	FA01416000	Knurled Thumb Nut
5	PL05496000	Dispense Head Block
6	PH05501000	Nozzle Set
7	MT07680000	Dispense Head Bracket
8	PL04353000	Slider Block
9	EL01148000	Micro Switch
10	PH04330001	Cam Assembly
11	M004061000	Dispense Head Motor

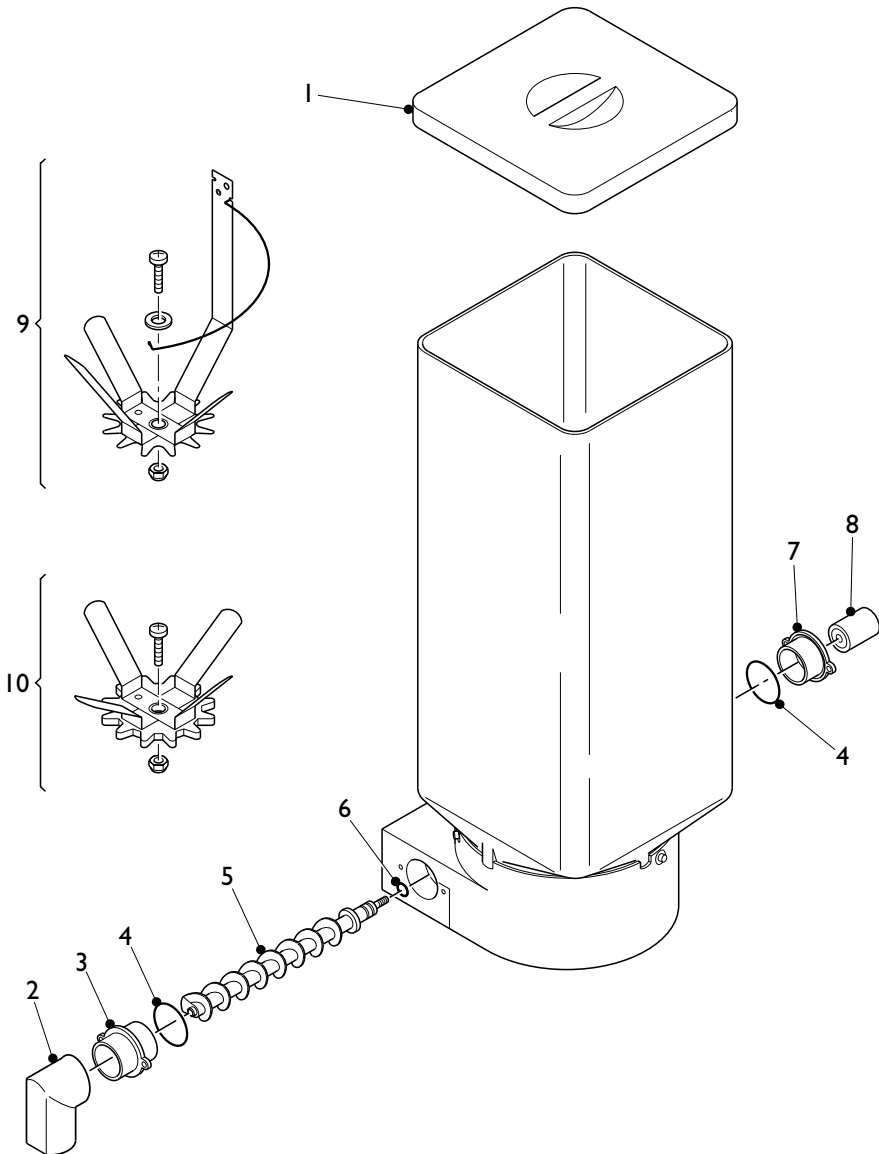
Canister Assembly



Canister Assembly

Ref No.	Part No.	Item Description
	PL01105000	Canister - With Agitator
	PL02145000	Canister - No Agitator
1	PL04407000	Canister Lid
2	(a) PL01128000	Canister Chute - Central
	(b) PL01441000	Canister Chute - LH, Long
	(c) PL01442000	Canister Chute - RH, Long
3	PL04408000	Front Auger Fixing
4	SI04697000	'O' Ring
5	PL04410000	Auger c/w 'O' Rings
6	SI04698000	'O' Ring
7	PL04409000	Rear Auger Fixing
8	PL04412000	Drive Dog
9	ME04413000	Bearing
10	SI04699000	'O' Ring
11	ME04694000	Agitator Assembly - Where Fitted

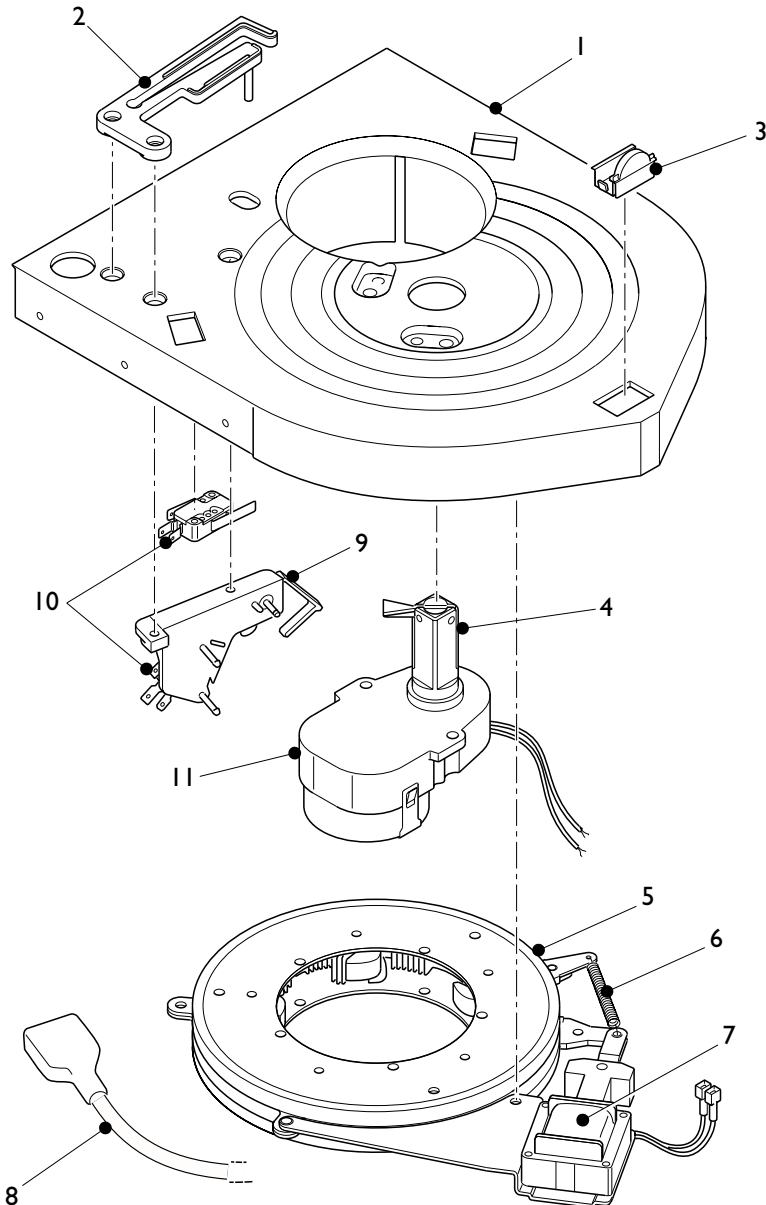
Freshbrew Canister Assembly



Freshbrew Canister Assembly

Ref No.	Part No.	Item Description
1	PL02712000	Canister Lid
2	PL01128000	Canister Chute - Central
3	PL02709000	Flange - Front
4	SI02704000	'O' Ring
5	(a) ME02706000	Auger
	(b) ME06641000	Freshbrew Coffee Auger
6	SI02705000	'O' Ring
7	PL02710000	Flange - Rear
8	PL02711000	Drive Dog
9	ME06642000	Agitator Assembly - Coffee Ingredient
10	ME06866000	Agitator Assembly - Tea Ingredient

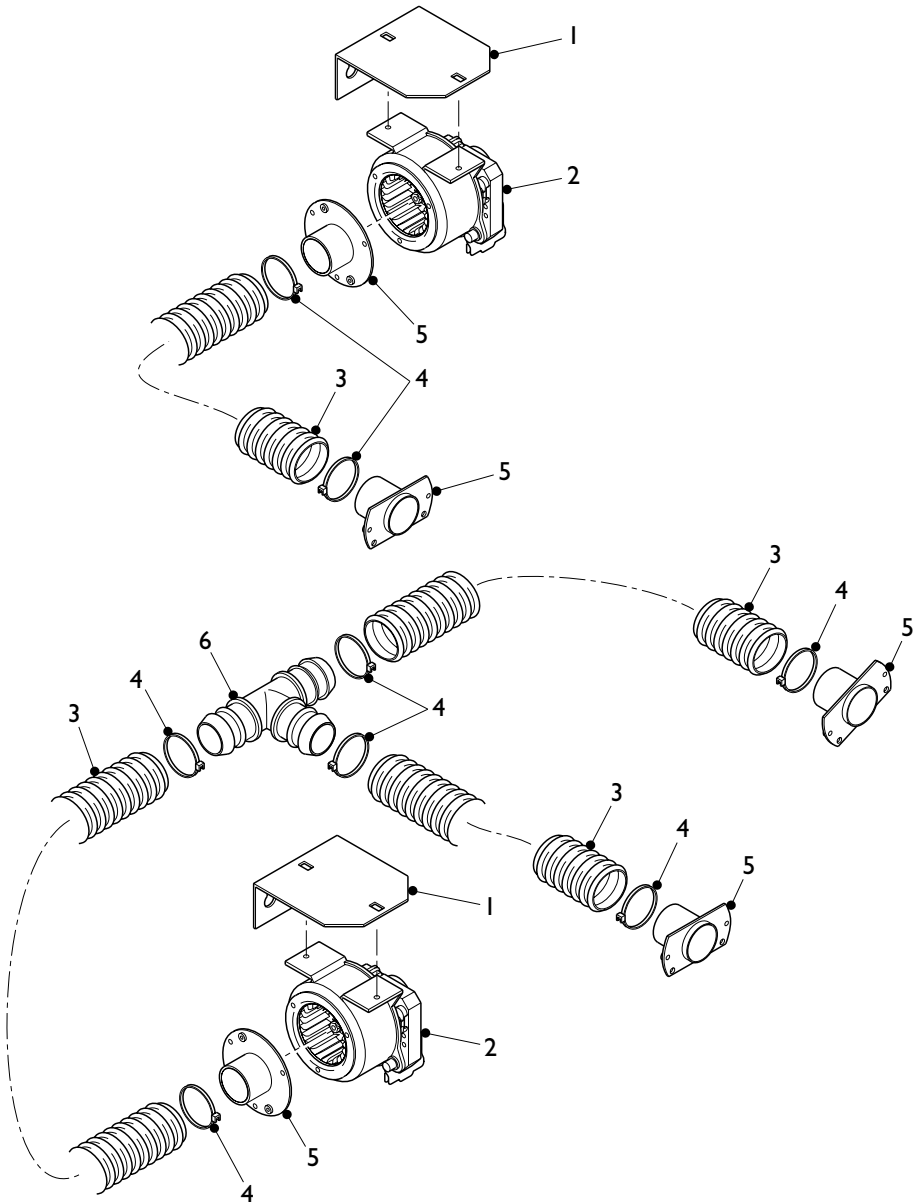
Cup Drop Unit



Cup Drop Unit

Ref No.	Part No.	Item Description
1	(a) ME01106001	Cup Drop Unit - Squat
	(b) ME01280001	Cup Drop Unit - Tall
2	PL02714000	Turret Register Lever
3	PL02715000	Turret Wheel Insert
4	PL02717000	Turret Drive Boss
5	(a) ME01482000	Cup Splitter - Squat
	(b) ME01531000	Cup Splitter - Tall
	(c) ME08299000	Cup Splitter - Squat, Paper Cups
6	ME04634000	CDU Spring
7	(a) EL03185000	Solenoid
	(b) ME03186000	Fixing Clip
8	LO00055000	CDU Loom
9	PL02716000	Cup Empty Arm
10	EL04920000	Micro Switch
11	ME03247000	Motor & Gearbox Assembly
	MT05433000	Cup Chute Guide - Not Illustrated

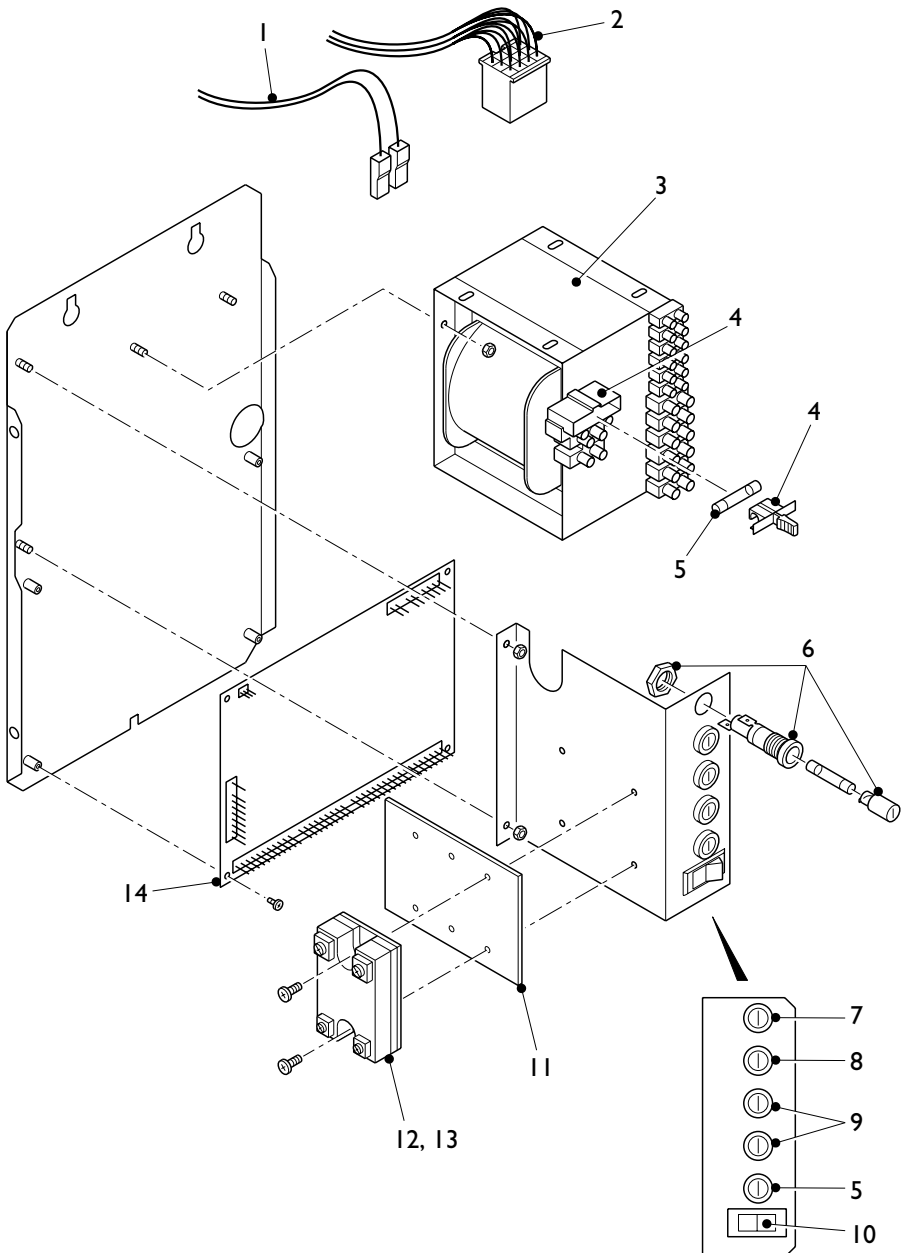
Extract System



Extract System

Ref No.	Part No.	Item Description
1	MT04132000	Mounting Bracket
2	ME01116000	Extract Fan
3	HO01139000	Hose
4	FA01188000	Cable Tie
5	PL03083000	Extract Hose Adaptor
6	PL04165000	'T' Piece - 1/4"

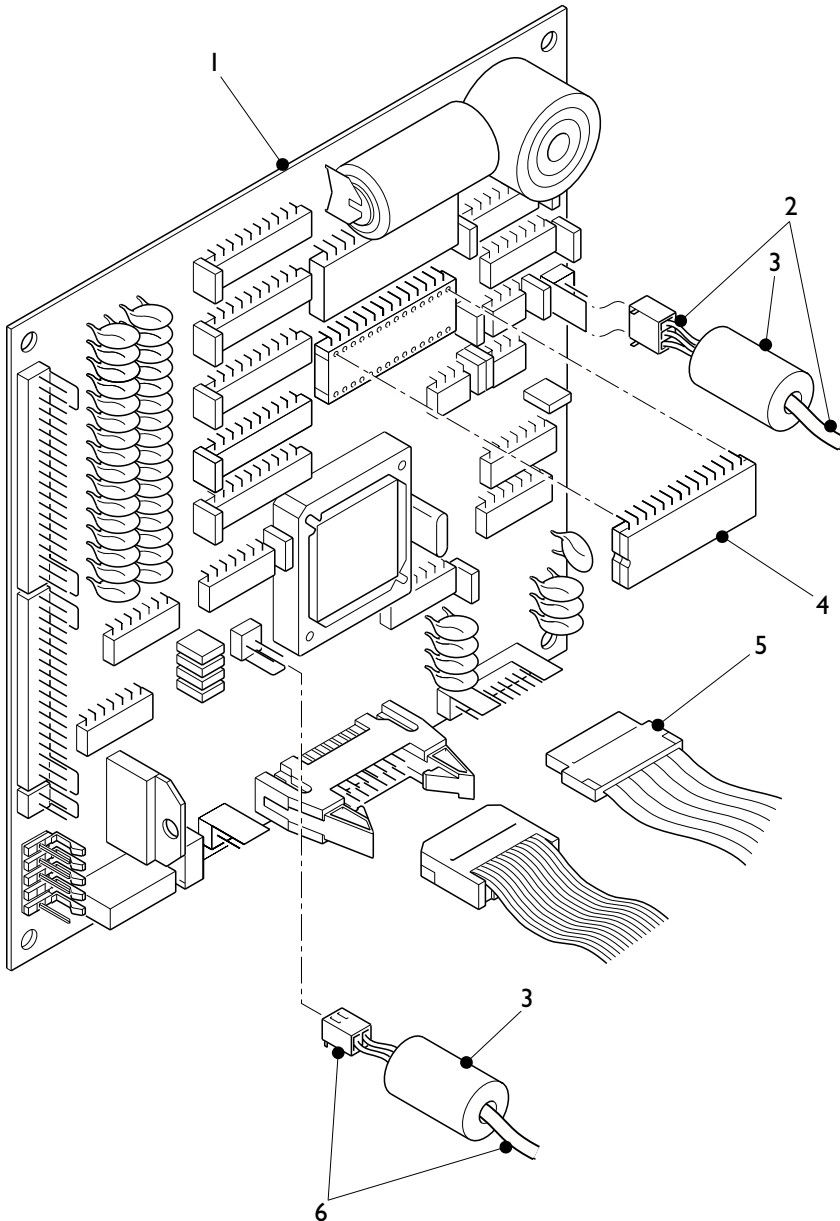
Power Supply Unit



Power Supply Unit

Ref No.	Part No.	Item Description
1	LO04076000	PSU Loom
2	LO04077000	Transformer Loom
3	ME02144000	Transformer
4	EL08390000	Fuse Holder Assembly
5	EL02171000	Fuse, 4A
6	EL01994000	Fuse Holder Assembly
7	EL01151000	Fuse, 6.3A
8	EL01277000	Fuse, 4A - Antisurge
9	EL01995000	Fuse, 12A
10	EL01146000	On/Off Switch
11	MT05220000	Mounting Plate
12	EL01815000	Thermal Pad
13	EL01152000	Solid State Relay - 25A
14	(a) EL06249000	I/O Board - 38 Outputs
	(b) EL06249R00	I/O Board - 38 Outputs, Service Exchange
	(c) EL00094000	I/O Board - 30 Outputs
	(d) EL00094R00	I/O Board - 30 Outputs, Service Exchange

MPU Board

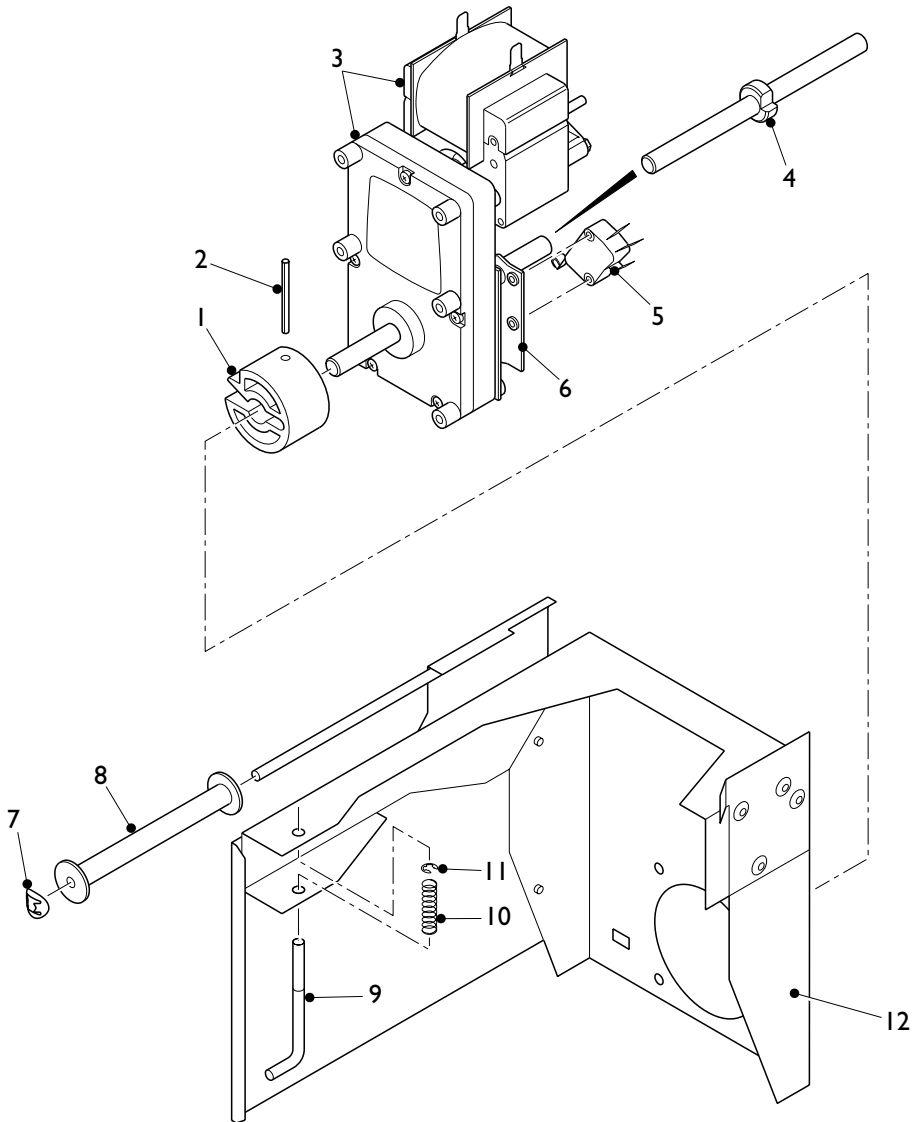


MPU Board

Ref No.	Part No.	Item Description
1	(a) EL04429012	Controller Board
	(b) EL04429R00	Controller Board - Service Exchange (Instant and Freshbrew models)
	(c) EL04429R12	Controller Board - Service Exchange (Bean to Cup models)
2	LO04666000	IC2 Loom (Where Fitted)
3	EL02850000	Ferrite Sleeve
4	EL01584000	Eprom*
5	LO00276000	Ribbon Cable Extension
6	LO08306000	Thermistor Link Loom
	EL03491000	Ribbon Ferrite - Not Illustrated
	EL03492000	Ribbon Ferrite Clip - Not Illustrated

* Please specify software version when ordering

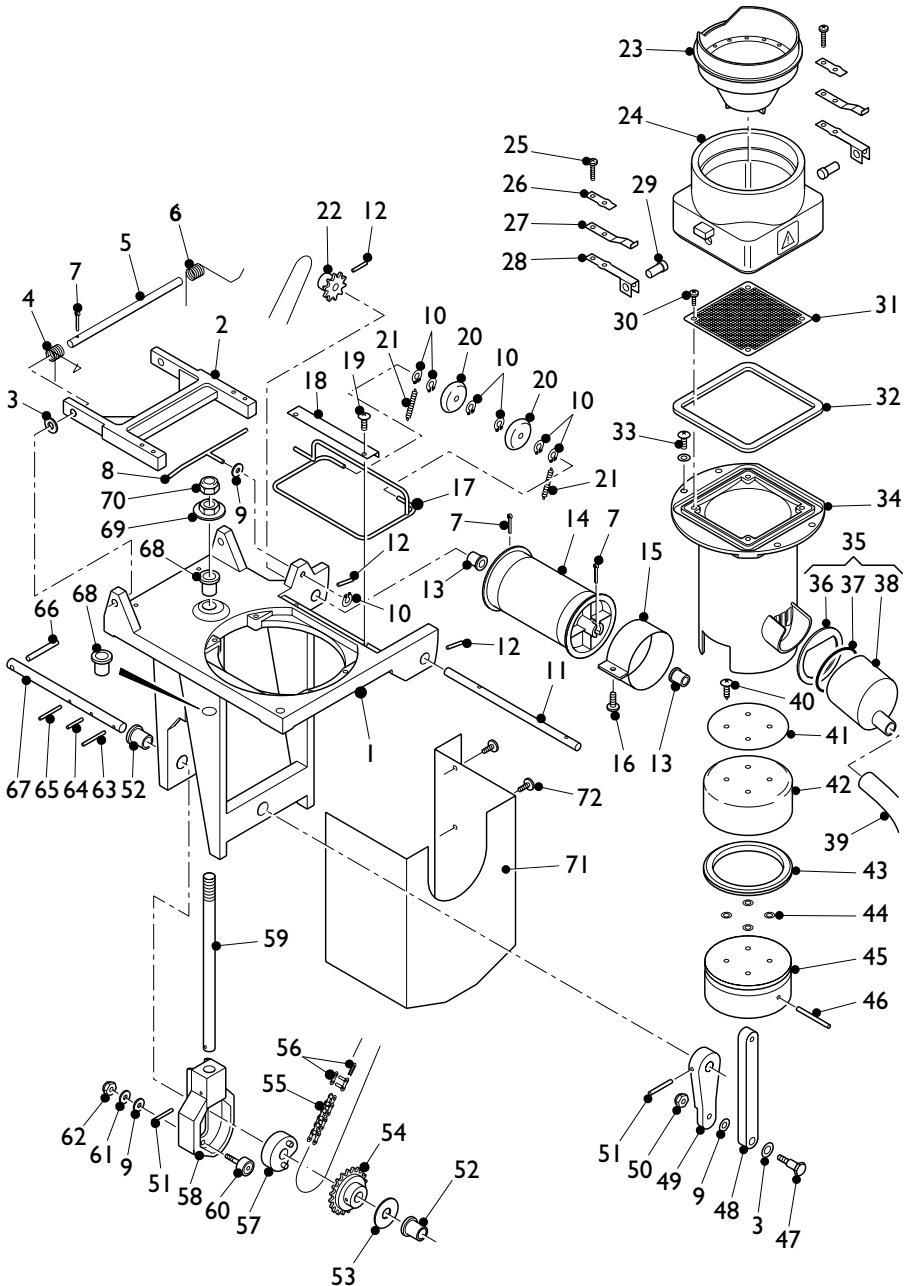
Brewer Module Assembly



Brewer Module Assembly

Ref No.	Part No.	Item Description
1	PL03297000	Drive Dog
2	ME08734000	Roll Pin - 36 x 3mm
3	M001160000	Brewer Motor
4	ME00979000	Cam c/w Grub Scew
5	EL01148000	Micro Switch
6	MT00046000	Micro Switch Mounting Bracket
7	FA01178000	Star Clip
8	ME00038000	Filter Paper Roller
9	ME00073000	Pin
10	ME01162000	Spring
11	FA01136000	'E' clip, 5mm
12	MT04936000	Brewer Mounting Bracket Assembly

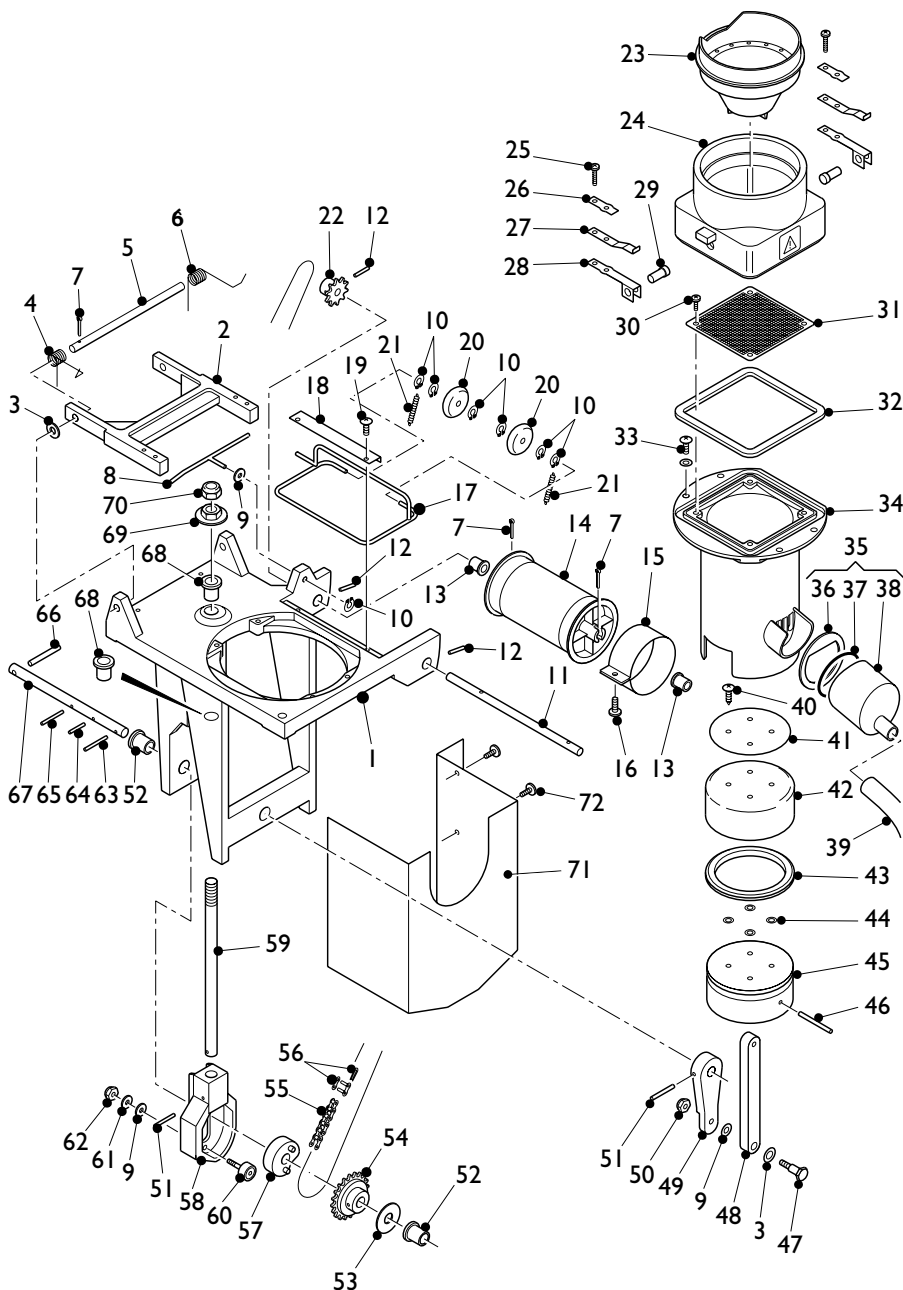
Brewer Assembly - Paper Type



Brewer Assembly - Paper Type

Ref No.	Part No.	Item Description
	ME01159000	Brewer Complete
1	ME07136000	Chassis
2	ME06189000	'H' Frame
3	ME08137000	Plain Washer
4	ME08451000	Spring - RH
5	ME08452000	Shaft - 'H' Frame
6	ME08453000	Spring - LH.
7	ME06134000	Taper Pin - $\frac{3}{32} \times \frac{1}{2}$
8	ME08316000	Lift Rod
9	FA08393000	Plain Washer
10	ME08318000	Circlip
11	ME08454000	Shaft - Paper Drum
12	ME06132000	Spring Pin - $\frac{3}{32} \times \frac{5}{8}$
13	ME06713000	Bearing
14	ME06133000	Paper Feed Drum
15	ME08455000	Slide Band
16	FA08456000	Screw, 8-32 x $\frac{1}{4}$
17	ME07734000	Yoke
18	ME08450000	Retainer Plate
19	FA08449000	Screw, 8-32 x $\frac{3}{8}$
20	ME03954000	Paper Guide Wheel
21	ME03970000	Spring
22	ME06135000	Sprocket
23	ME03963000	Mixing Funnel
24	ME03964000	Mixing Bowl
25	ME06131000	Screw, 6-32 x $\frac{5}{8}$
26	ME06712000	Support Plate
27	ME03968000	Plate Spring
28	ME03967000	Pressure Spring
29	ME03969000	Pin
30	ME06139000	Screw, 6 x $\frac{3}{8}$
31	ME03966000	Filter Screen
32	ME03965000	Rubber Seal
33	ME06140000	Screw, 8-32 x $\frac{1}{2}$
34	ME03958000	Brewer Cylinder
35	SA06075000	Outlet Adaptor Kit
36	SI06077000	Outlet Seal
37	FA01216000	'O' Ring

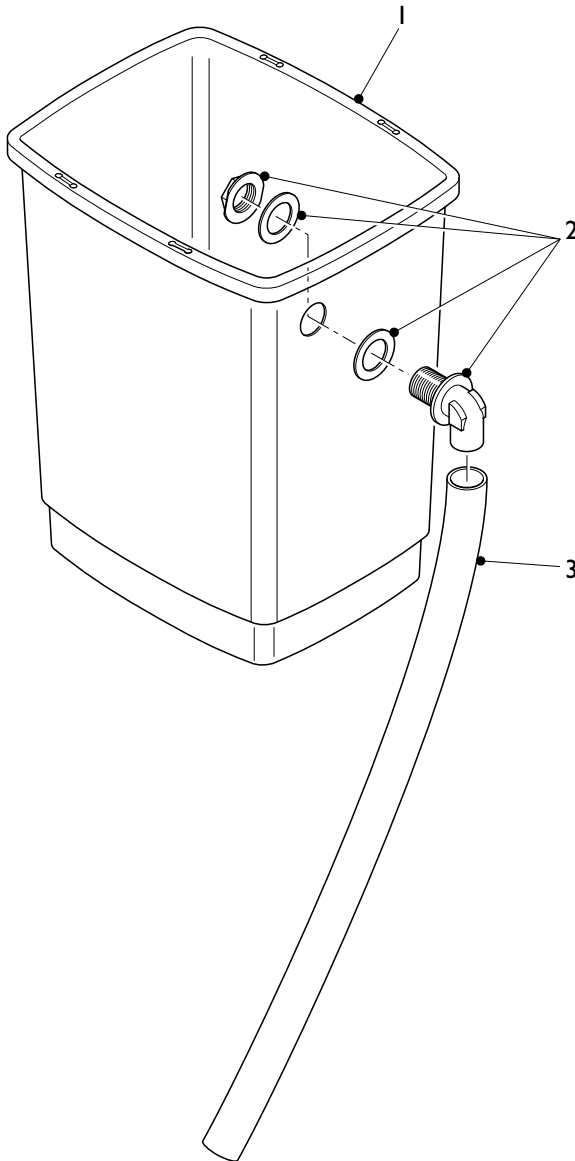
Brewer Assembly - Paper Type (Cont'd)



Brewer Assembly - Paper Type (Cont'd)

Ref No.	Part No.	Item Description
38	PL06075001	Outlet Adaptor
39	SI01171960	Silicone Pipe - 8mm i.d.
40	FA08307000	Screw, 8 - ½
41	ME08308000	Piston Plate
42	ME03957000	Teflon Piston Seal
43	ME06138000	Rubber Piston Seal
44	ME08309000	'O' Ring
45	ME08310000	Piston
46	FA08311000	Spring Pin
47	FA06880000	Screw
48	ME08312000	Connecting Rod
49	ME03959000	Crank Arm
50	FA07446000	Nut, 10 - 24
51	ME03960000	Spring Pin - ⅜ x 7/8
52	ME03962000	Bearing
53	FA08457000	Plain Washer
54	ME08458000	Drive Sprocket
55	ME06136000	Drive Chain
56	ME06137000	Connecting Link - Drive Chain
57	ME03961000	Clutch Cam
58	ME06714000	Bearing Housing
59	ME08397000	Tie Rod
60	ME03962000	Bearing, Cam
61	FA08459000	Plain Washer
62	C9900164	Nut
63	FA08311000	Spring Pin
64	FA07447000	Spring Pin - ⅜ x ¾
65	FA08311000	Spring Pin
66	ME03955000	Spring Pin - 3/16 x 1¼
67	ME08460000	Main Drive Shaft
68	ME03962000	Bearing
69	FA08398000	Adjuster Nut
70	FA08399000	Lock Nut
71	MT04328000	Brewer Cover
72	FA01504000	Screw, M4 x 10

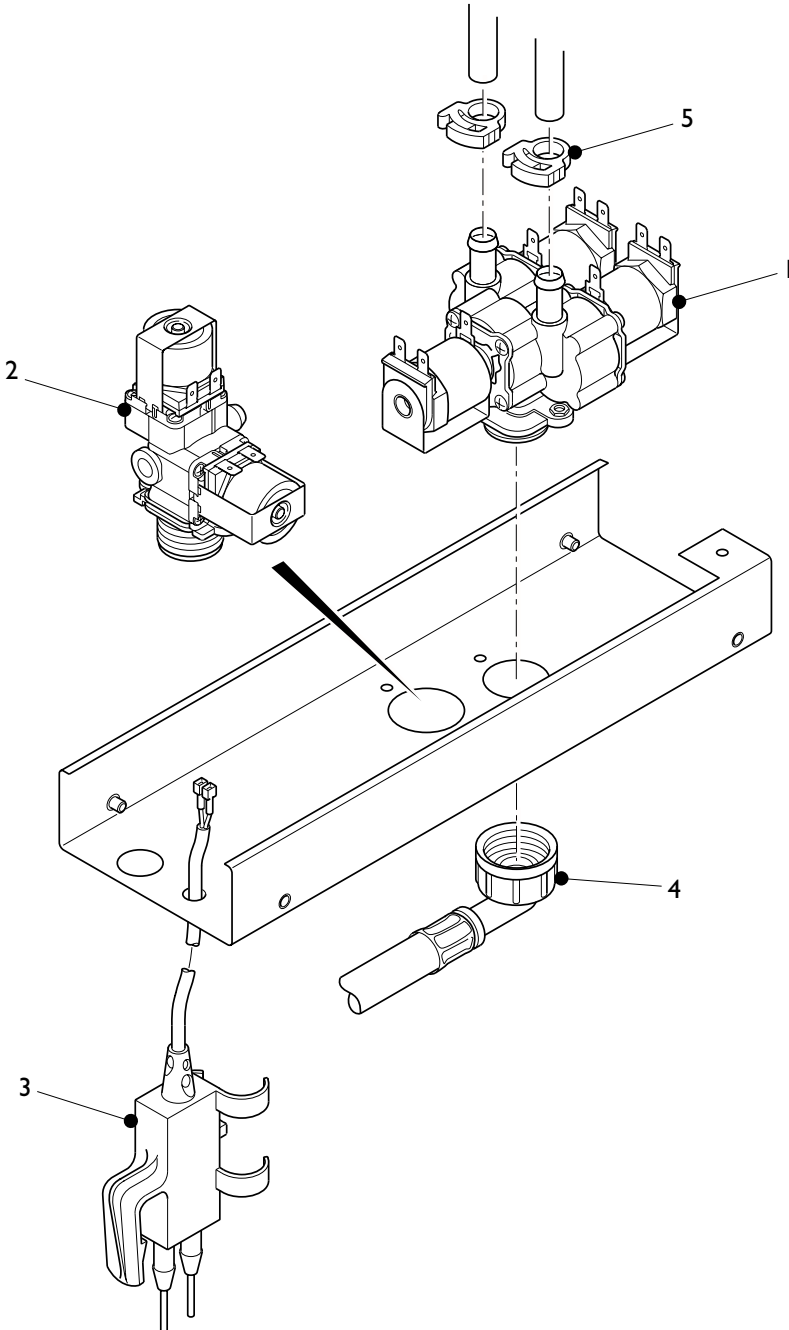
Freshbrew Waste Bucket Assembly



Freshbrew Waste Bucket Assembly

Ref No.	Part No.	Item Description
	WO04971001	Freshbrew Waste Bucket Assembly
1	PL06672000	Freshbrew Waste Bucket
2	PL04969000	Pipe Elbow Assembly
3	HO04970000	Waste Pipe - 24mm i.d.

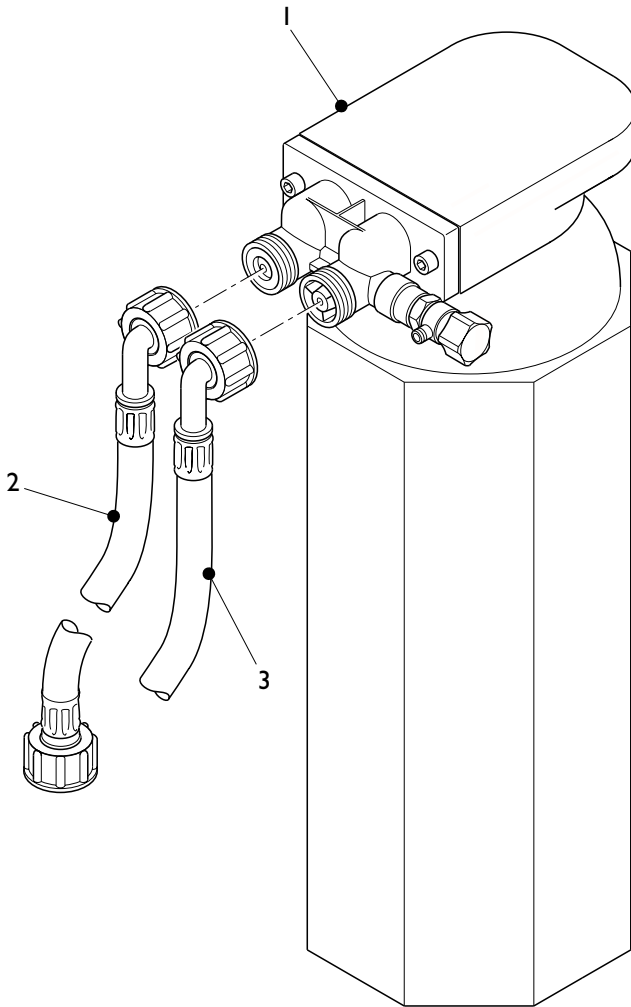
Inlet Valve Assembly



Inlet Valve Assembly

Ref No.	Part No.	Item Description
1	VA04030000	Inlet Valve - Splitter
2	VA02567000	Inlet Valve - Single
3	WO05396000	Waste Bucket Probe
4	HO04445000	Water Inlet Hose
5	FA01186000	Pipe Clip - Snapper 38

Water Filter Assembly - Brita

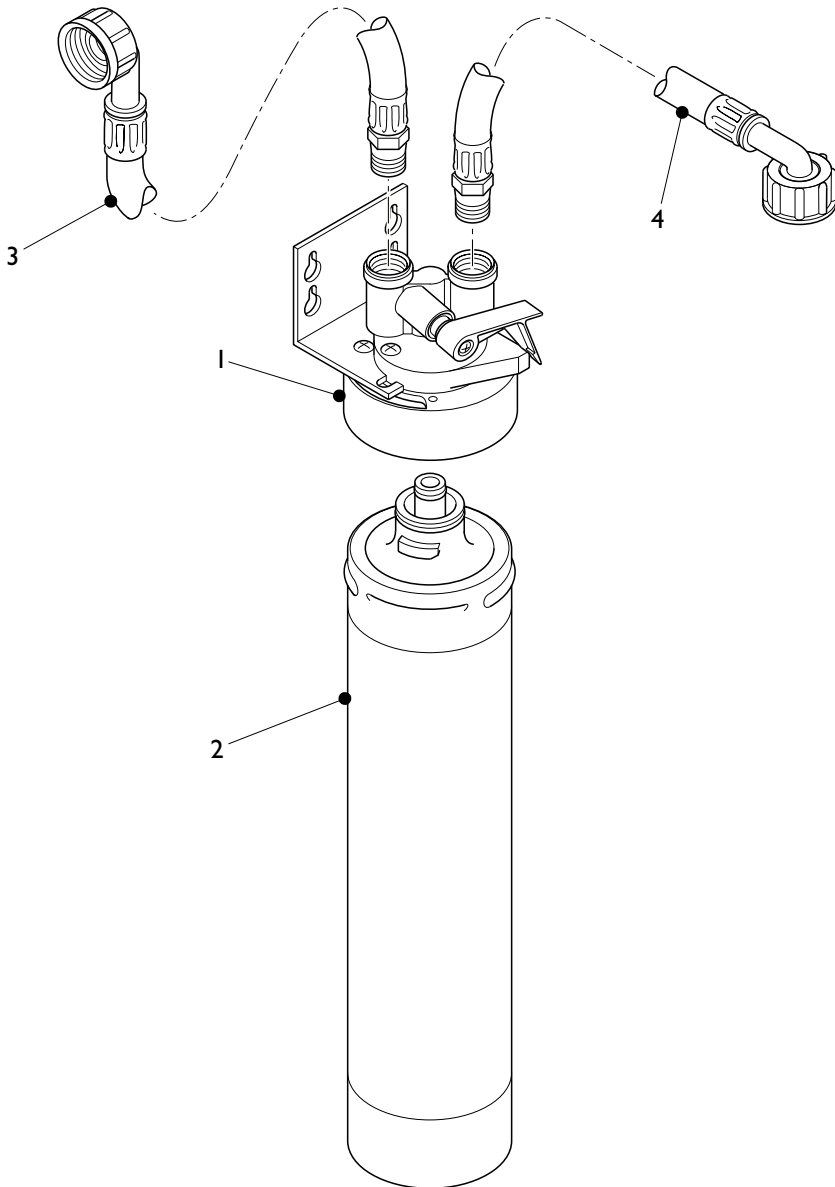


Water Filter Assembly - Brita

Ref No.	Part No.	Item Description
1	WF04910000	Brita Filter c/w Head
2	(a) HO04679000	Hose - 3/4 BSP x 400mm long
	(b) HO04445000	Hose - 3/4 BSP x 370mm long*
3	(a) HO04680000	Hose - 3/4 BSP x 775mm long
	(b) HO04446000	Hose - 3/4 BSP x 600mm long*

* Eclipse machine only

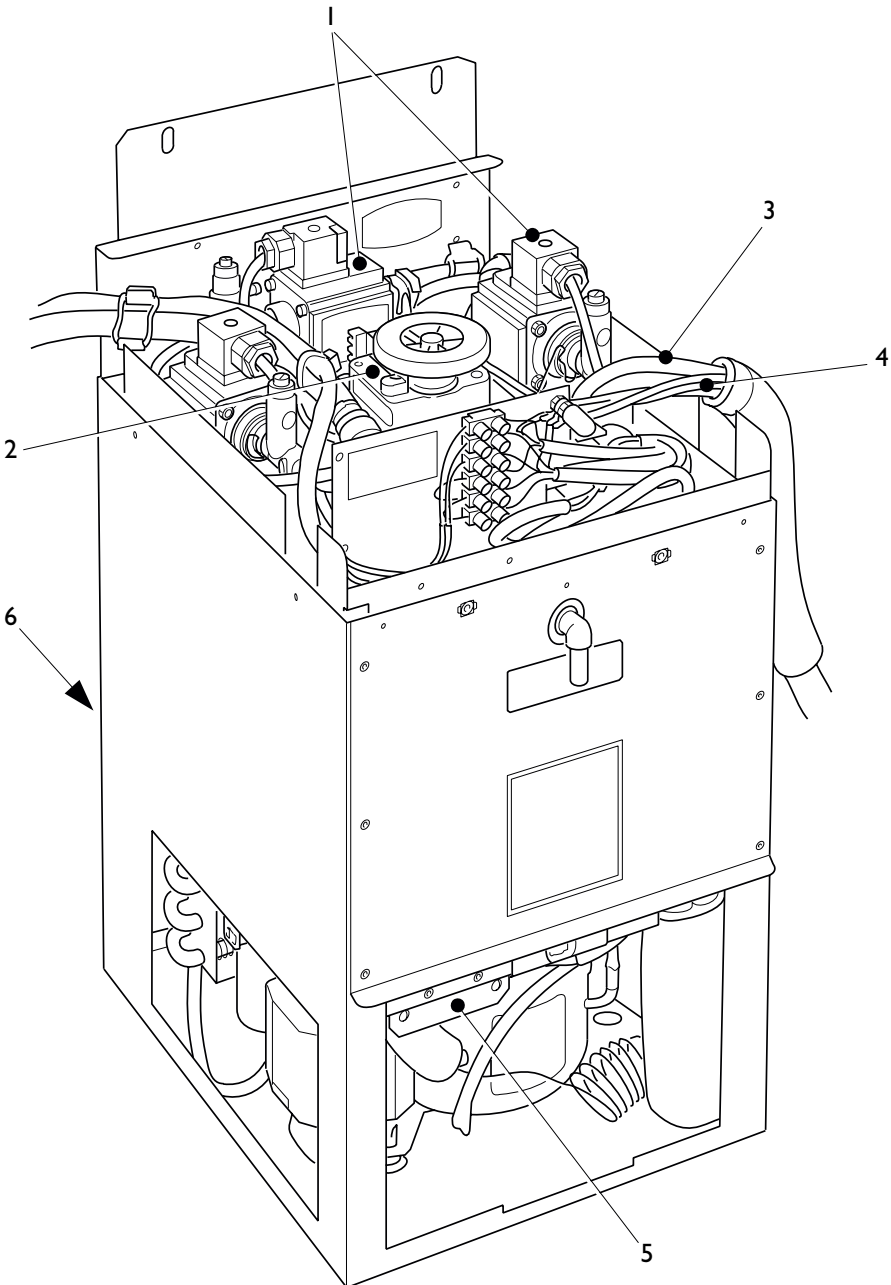
Water Filter Assembly - Everpure



Water Filter Assembly - Everpure

Ref No.	Part No.	Item Description
1	WF03116000	Filter Head - Everpure
2	WF03273000	Water Filter Cartridge - Everpure
3	HO04074000	Water Inlet Hose
4	HO04075000	Water Outlet Hose
	WF04246000	Diverter (Not Illustrated)

Chiller Unit - Regency

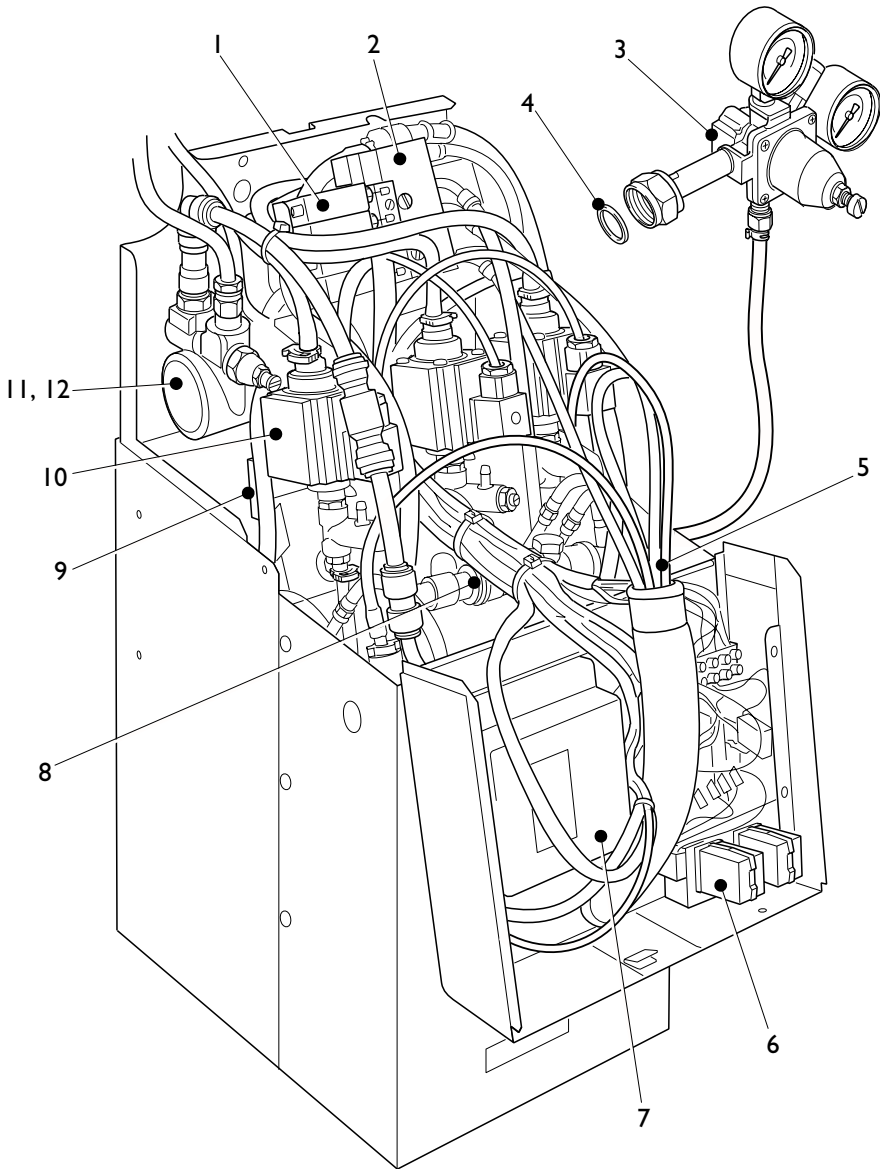


Chiller Unit - Regency

Ref No.	Part No.	Item Description
	ME05888R00	Chiller, 3 Syrup Unit - Service Exchange
1	ME02700000	Syrup Pump
2	ME02745000	Agitator Motor Assembly - Cadiz
3	HO04989000	Water Dispense Hose - 4mm i.d.
4	HO04997000	Syrup Dispense Hose - 3mm i.d.
5	ME02744A00	Thermostat
6	ME03278000	Fan Unit - Carbonator
	ME08726000	Water Dispense Spout, Std*
	ME08272000	Water Dispense Spout, Long*
	ME08728000	Syrup Dispense Spout*

* Not Illustrated

Carbonator Unit - Monarch

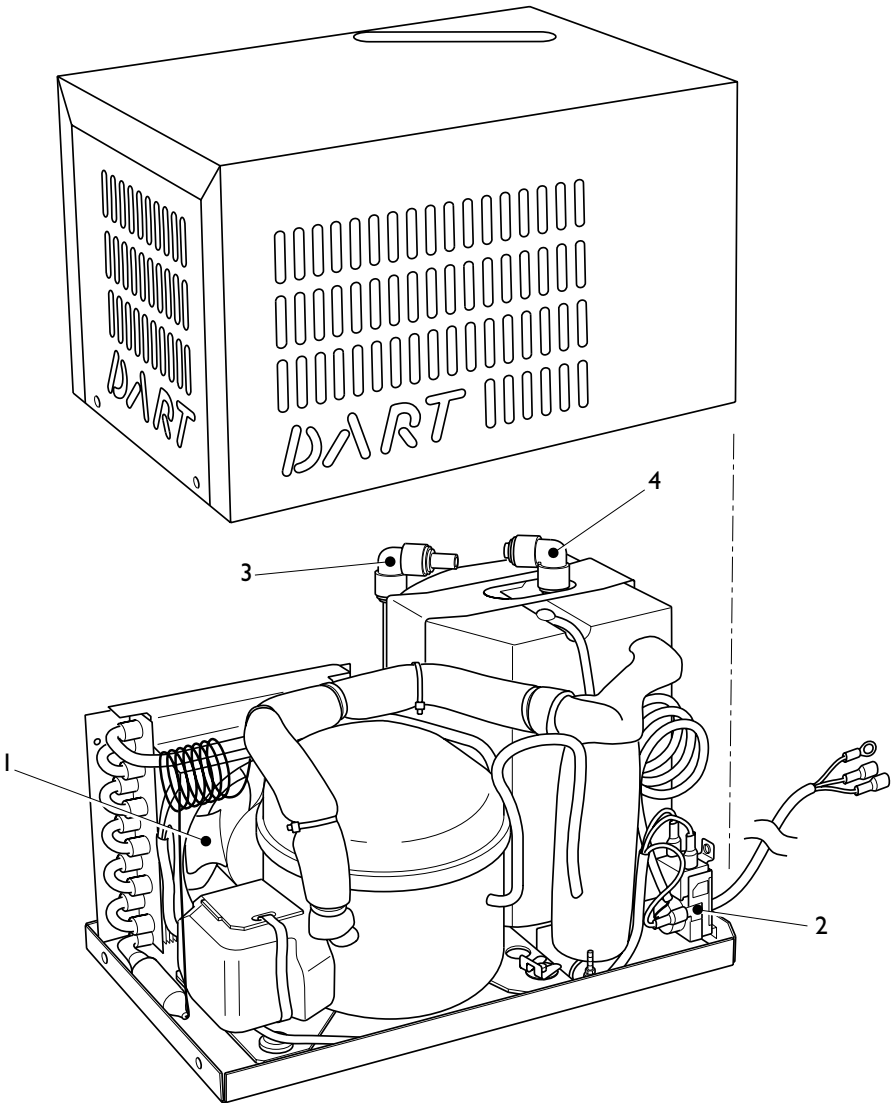


Carbonator Unit - Monarch

Ref No.	Part No.	Item Description
	ME05898R00	Carbonator, 2 Syrup - Service Exchange
	ME05727R00	Carbonator, 3 Syrup - Service Exchange
1	EL03304000	Solenoid Block, 110V
2	ME02719N00	Valve Block Assembly
3	ME06734000	CO2 Regulator
4	ME02914000	CO2 Regulator Seal
5	(a) HO04989000	Water Dispense Hose - 4mm i.d.
	(b) HO04997000	Syrup Dispense Hose - 3mm i.d.
6	ME03147000	Relay, 4 Pole
7	ME02718000	Level Control Box
8	ME07185000	Double Check Valve
9	ME02913000	Carbonator Thermostat
10	ME02700000	Syrup Pump
11	MO06646000	Pump Motor - Rotavane
12	MO06647000	Pump Head - Rotavane
	ME08726000	Water Dispense Spout Std*
	ME08272000	Water Dispense Spout Long*
	ME08728000	Syrup Dispense Spout*
	HO04450000	Pressure Valve Assembly*
	EL01155000	6 Amp Mains Filter*

* Not Illustrated

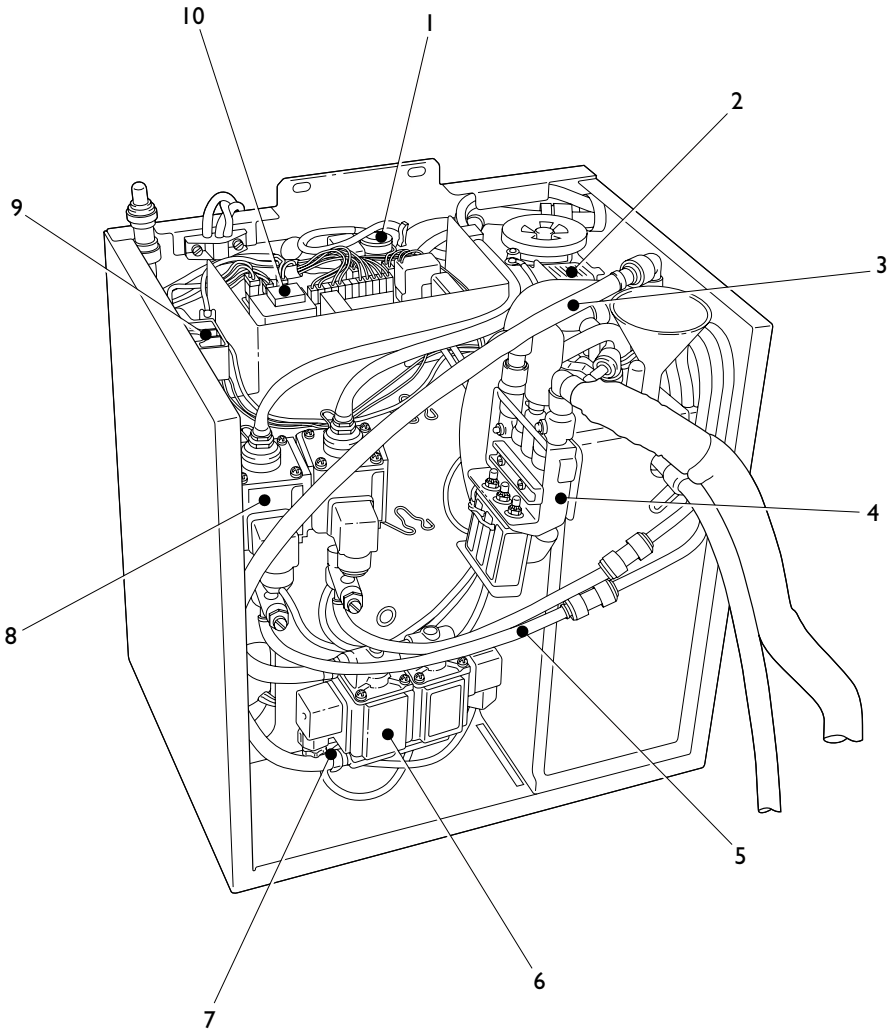
Chiller Unit - Dart



Chiller Unit - Dart

Ref No.	Part No.	Item Description
	ME05645R00	Dart Chiller - Service Exchange
1	ME03278000	Fan Unit - Dart Chiller
2	ME02744A00	Thermostat - Dart Chiller
3	PL08701000	Elbow 3/8 Equal
4	PL08702000	Elbow 3/8 x 5 1/6

Carbonator/Chiller Unit - Viscount



Carbonator/Chiller Unit - Viscount

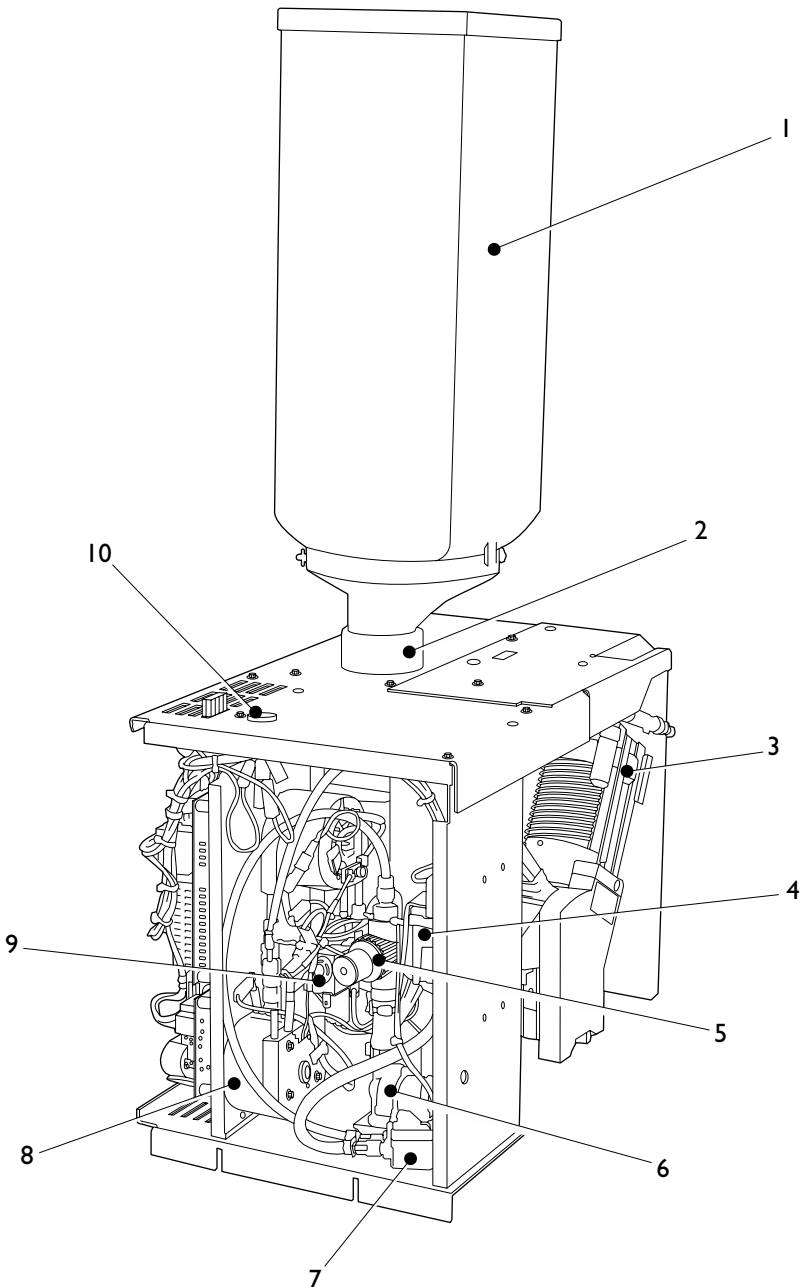
Ref No.	Part No.	Item Description
	ME07860000	Carbonator, 2 Syrup - New
	ME07860R00	Carbonator, 2 Syrup - Service Exchange
	ME08581000	Carbonator, 3 Syrup - New
	ME08581R00	Carbonator, 3 Syrup - Service Exchange
	ME08268000	Still Unit, 2 Syrup - New
	ME08268R00	Still Unit, 2 Syrup - Service Exchange
	ME08269000	Still Unit, 3 Syrup - New
	ME08269R00	Still Unit, 3 Syrup - Service Exchange
1	ME02744000	Thermostat
2	ME07238000	Agitator Motor Assembly
3	HO06633000	Hose - Aquavend 6
4	(a) ME08275000	Valve Block Assembly
	(b) ME08790000	Barbed Nipple (Old Type)
	(c) ME07296000	Barbed Nipple (New Type)
	(d) ME08917000	'O' Ring, Barbed Nipple
	(e) EL03304000	Solenoid, 110V
	(f) ME08789000	Scale Trap Filter
	(g) ME04459000	Actuator Long Stay
5	HO04989000	Water Dispense Hose - 4mm i.d.
6	ME02701000	Water Pump
7	(a) ME07295000	Brass Fitting
	(b) C3167103	Oetiker Clip, 12.3mm
8	ME02700000	Syrup Pump
9	ME03072000	Pressure Reducing Valve
10	(a) EL08491000	PCB, Viscount Chiller MK1
	(b) EL08271000	PCB, Viscount Chiller MK2
	EL08784000	Start Capacitor, GL45 Comp*
	EL08785000	Start Relay GL45 Comp*
	EL08786000	Thermal Cut out GL45 Comp*
	ME03278000	Condenser Fan*
	ME02718000	Level Control Box (MK1 Only)*
	VA07921000	CO2 Hose Assembly*
	ME06734000	CO2 Regulator*
	ME02439000	CO2 Bottle Spanner*

* Not Illustrated

Bean 2 Cup Module

Fusion B₂C and Eclipse B₂C Machines

Bean 2 Cup Module - Rear $\frac{3}{4}$ View

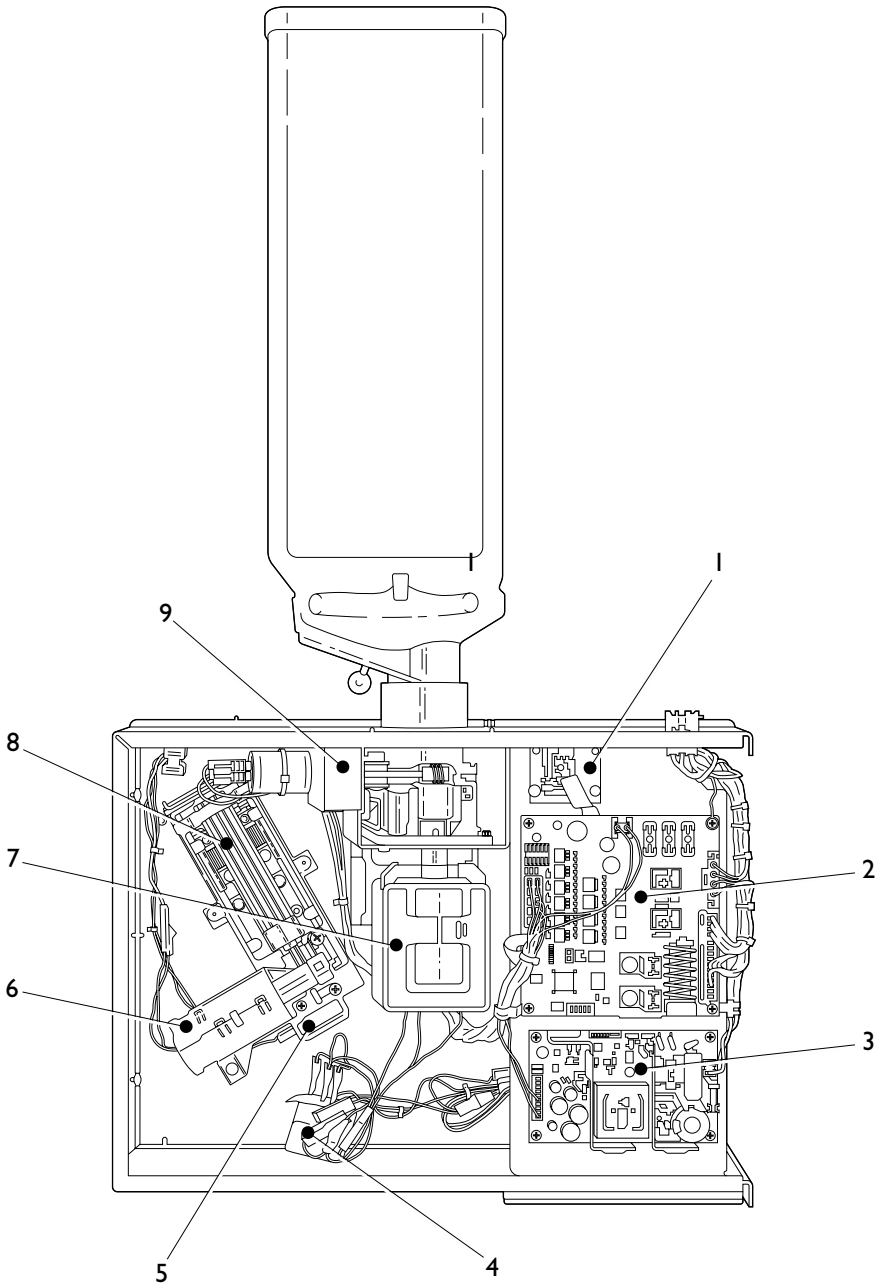


Bean 2 Cup Module - Rear $\frac{3}{4}$ View

Ref No.	Part No.	Item Description
1	PL08678000	Bean Container c/w Lid
2	PL08677000	Bean Container Holder
3	ME08833000	Brewer unit - See page 109
4	ME08816000	Pump
5	ME08812000	Pressure Reducing Valve
6	VA08675000	Inlet Valve
7	ME08814000	Flow Regulator
8	(a) EL07240000	Heater Block, 230V 1200W (Single)
	(b) EL08673000	Heater Block Assembly
	(c) EL07242000	Temperature Sensor Screwed
	(d) EL08674000	Thermal Cut Out
9	VA08676000	Valve Assembly
10	(a) C6116037	Fuse, 10 Amp
	(b) EL07243000	Fuse Holder
	ME08873000	Oetiker Clip 8.5 - 10.5mm*
	FA03300000	Oetiker Clip 15 - 17mm*

* Not Illustrated

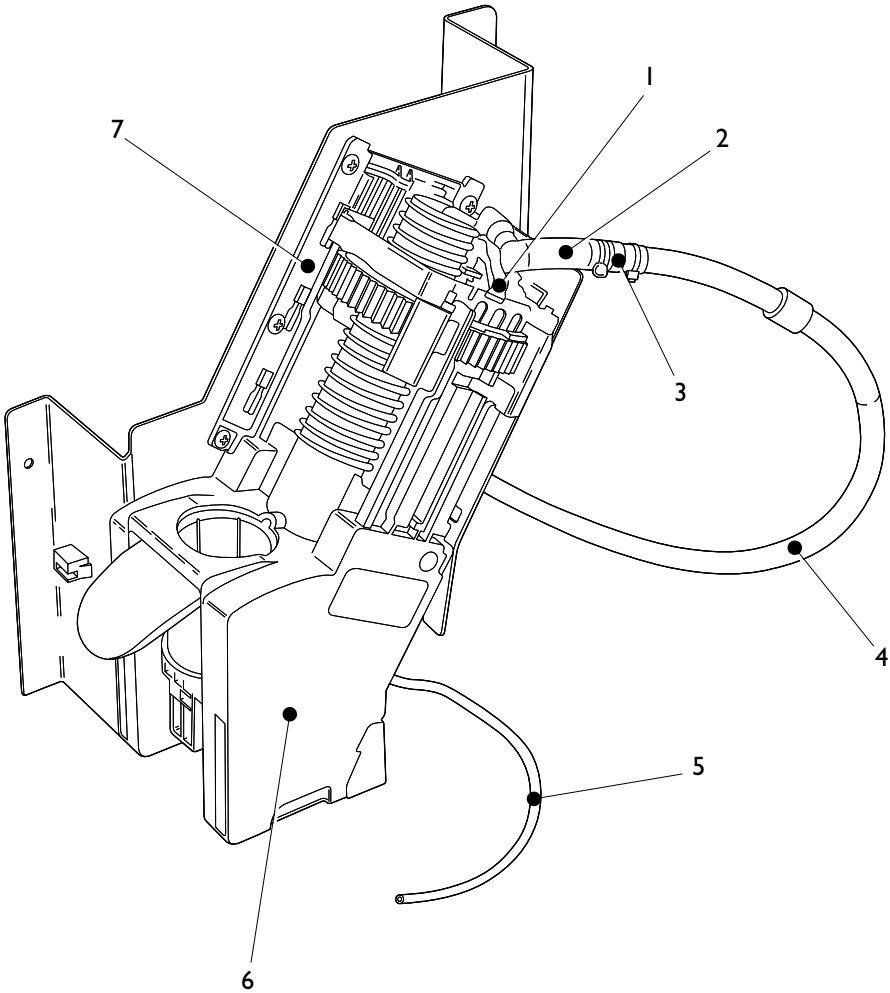
Bean 2 Cup Module - Side View



Bean 2 Cup Module - Side View

Ref No.	Part No.	Item Description
1	EL07241000	PCB Data Link - B2C
2	EL08672000	Controller PCB
3	EL08823000	PSU PCB
4	VA08842000	Valve Solenoid Assembly
5	ME8841000	Encoder
6	ME088400000	Brewer Motor
7	MO08679000	Motor & Grinder Assembly
8	ME08839000	Gear Assembly - Brewer
9	MO08680000	Grinder Motor Adjuster

Bean 2 Cup Brewer Assembly



Bean 2 Cup Brewer Assembly

Ref No.	Part No.	Item Description
1	ME08835000	Brewer Outlet Unit
2	SI08836000	Tube Elbow
3	(a) ME08837000	Aerator
	(b) FA01860000	Cable Tie
4	SI04345960	Silicon Tube 6 x 10 mm
5	SI08838000	Brewer Inlet Tube
6	ME08833000	Brewer Unit
7	ME08839000	Brewer Gear Assembly
	ME08913000	Piston 'O' Ring Upper (Not Shown)
	ME08914000	Piston 'O' Ring, Lower (Not Shown)
	ZC08861000	Brewer Cleaning Tablet (Not Shown)

Notes

CRANE[®] MERCHANDISING SYSTEMS[™]
A Crane Co. Company

Pipsmore Park, Bumpers Farm Industrial Estate,
Chippenham, Wiltshire SN14 6NQ
Tel: +44 (0)1249 444807 Fax: +44 (0)1249 444819
Email: sales@cranems.co.uk Website: www.cranems.co.uk