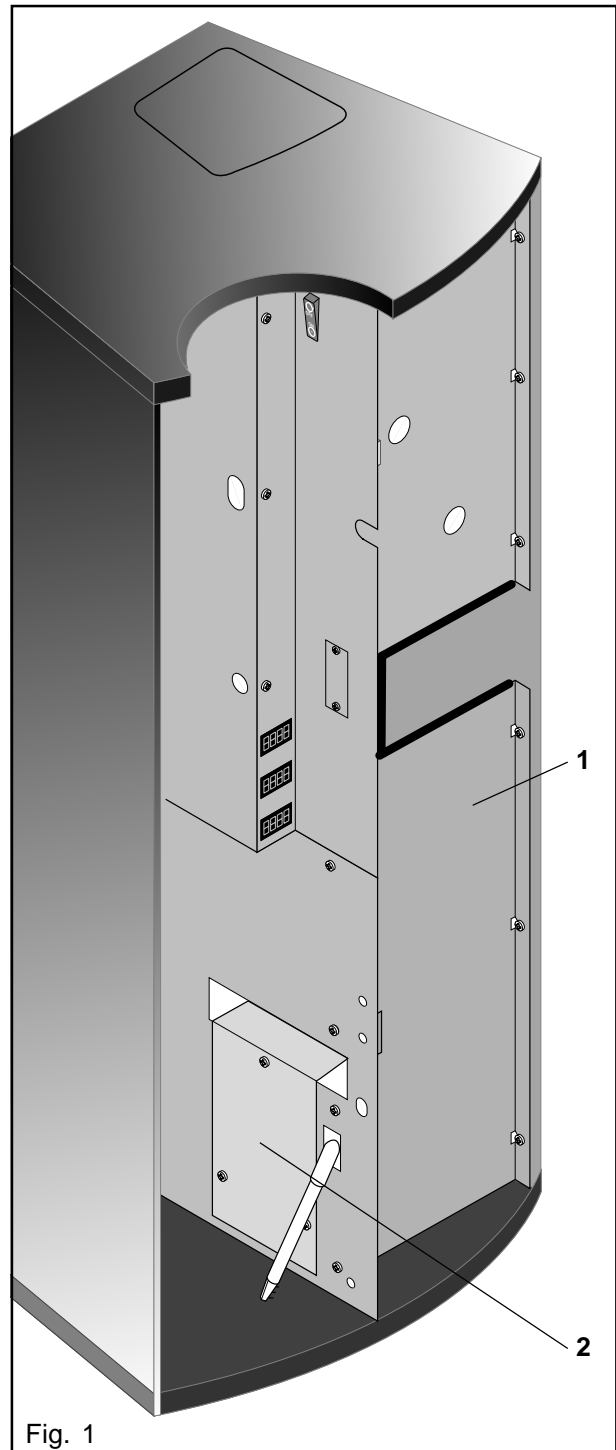


K Power Supply and Control

K.1 Disassemblies

K.1.1 Dismounting the Power Supply Unit

- Open the left door.
- Switch off the main switch, disconnect the power supply plug and close the water cock.
- Open the right door.
- Remove the bottom front cover (1). (Fig. 1)

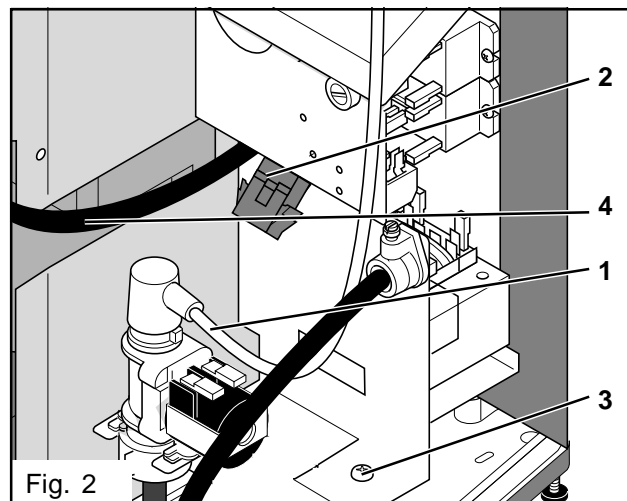


- Loosen the swivel nut on the inlet valve, take off the supply hose and pull the inlet valve forwards out of its support (Fig. 2).

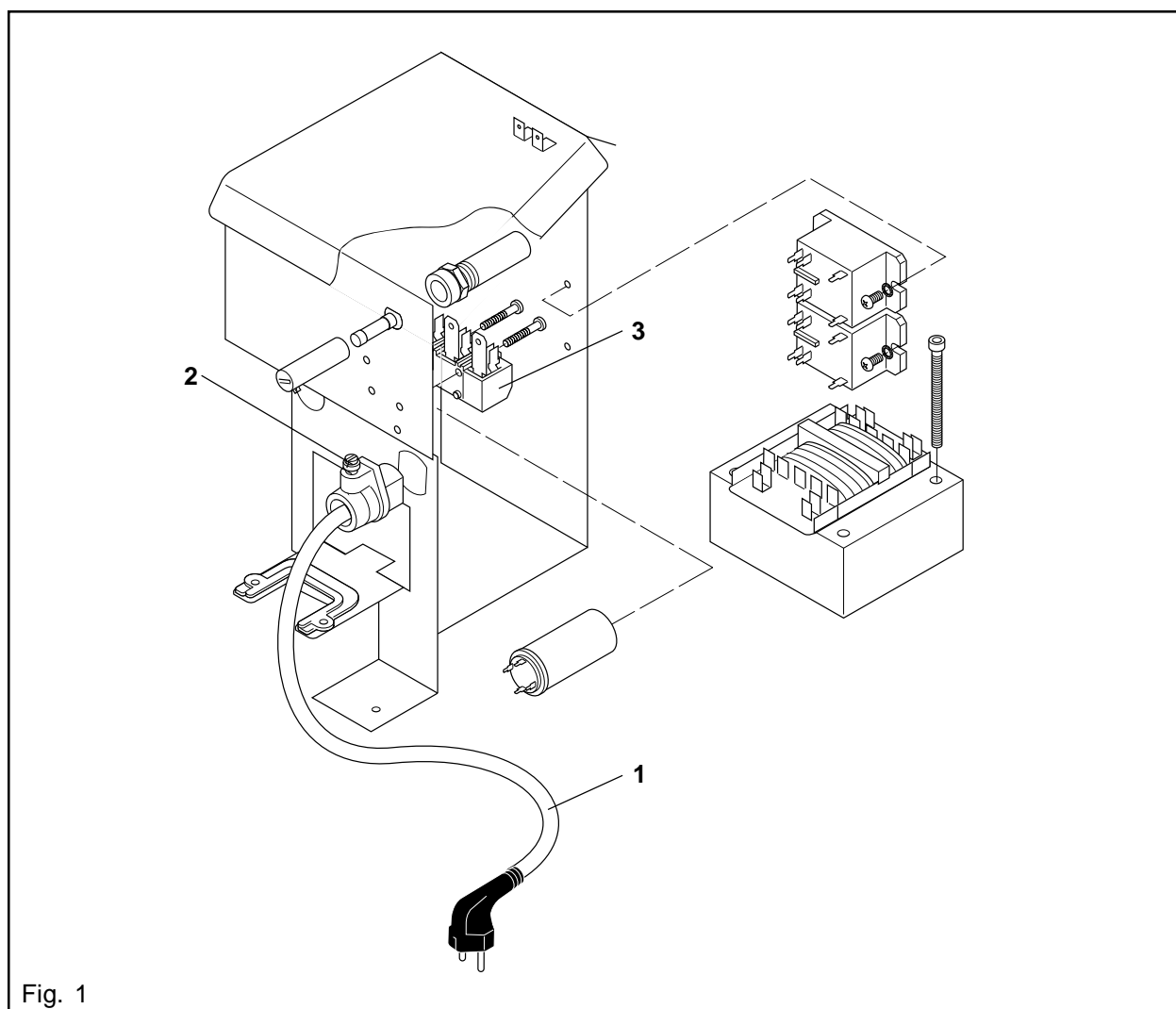
WARNING: Do not pull the hose (1) out of the angular nozzle. Otherwise the water will flow out of the boiler. There is a risk of being scalded. (Fig. 2)

- Disconnect the cable connection (2) to the boiler (Fig. 2).
- Disconnect the cable connection to the electronic control (4) (VMC board) at the electronic control (Fig. 2).
- Remove screw (3) and remove the power supply unit. Guide the power supply cable through the opening in the dispenser housing (Fig. 2).
- Disconnect to earthing cables from the top of the power supply unit.
- Remove the protective cover (2). (Fig. 1)
- Mounting is done in reverse order.

CAUTION: Make sure to reconnect the two earthing cables to the connections on the top of the power supply unit.



K.1.2 Dismounting the Power Supply Cable



DANGER: The transformer carries live voltage if the power supply plug is not disconnected.

- Dismount the power supply unit (see chap. K.2.1).
- Loosen the tension relief screw (2) and disconnect the cable connection at the terminal strip (3). (Fig. 1)

CAUTION: When re-installing the power supply cable make sure that the connections are made correctly. Ensure tension relief for the cable. (Fig. 1)

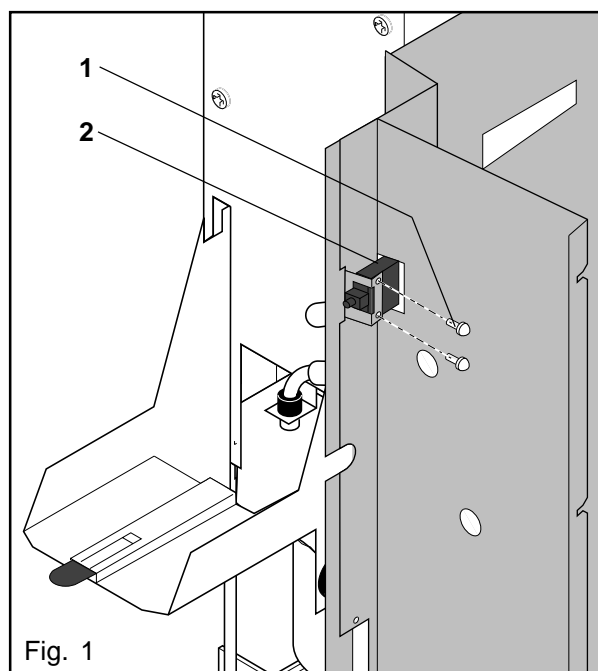
K.1.3 Dismounting the Safety Switch

- Open the left door.
- Switch off the main switch, disconnect the power supply plug and close the water cock.
- Remove the product container (see chap. "Maintenance").
- Open the right door.
- Remove the top front cover (refer to the corresponding chapter).
- Remove the clips (1) (Fig. 1)
- Remove the door safety switch (2) to the rear out of the front cover (Fig. 1).
- Disconnect four flat plugs on the back side of the switch. Mark the position of the plugs.
- Mounting is done in reverse order.




Ensure that the flat plugs are connected according to the markings and snap into position.

- Check the function of the door safety switch after installation.




K.1.4 Dismounting the Control Unit

- Open the left door.
- Switch off the main switch, disconnect the power supply plug and close the water cock.
- Open the right door.
- Disconnect the plugs of the cable harnesses from the electronic control.

 Mark the individual plugs so that they can be re-installed correctly.

- Remove the screws (1) and take off the electronic control (Fig. 1).

- Mounting is done in reverse order.

 Make sure that the plugs snap into position.

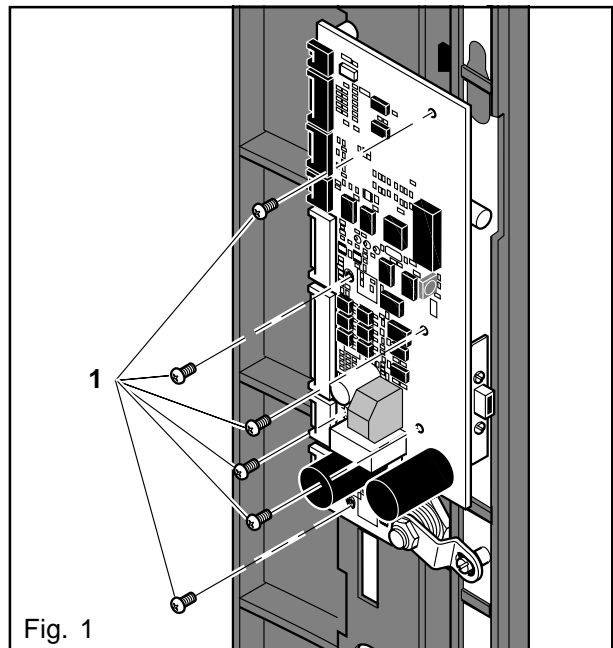


Fig. 1

Disconnecting plugs from the control unit Plug type 1 (2.5 mm grid, Fig. 2)

- Use your thumb to press the ratcheting latch **backwards**.
- Use your other hand to pull the plug with the cables **carefully** upwards.
- On re-installation make sure that the plug snaps into position.

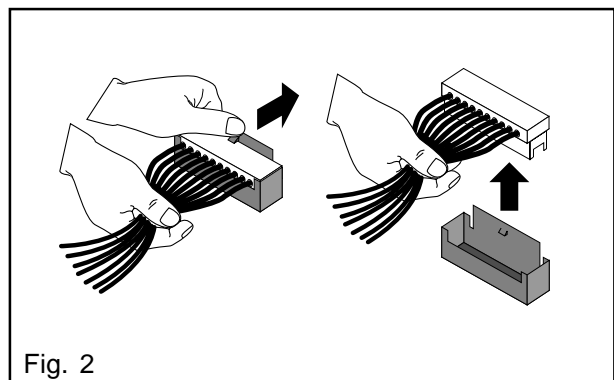


Fig. 2

Plug type 2 (5 mm grid, Fig. 3)

- Press the two notched hooks with your fingers **forwards**.
- **Carefully** pull the plug upwards with the cables.
- On re-installation make sure that the plug snaps into position.

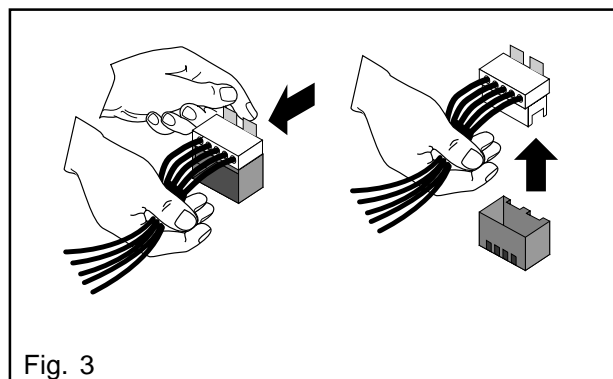


Fig. 3

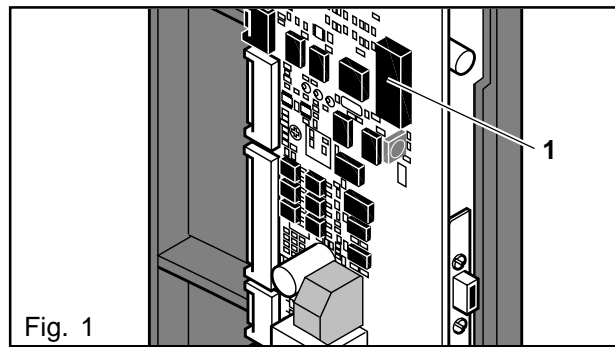
K.1.5 Dismounting the EPROM

- Open the left door.
- Switch off the main switch, disconnect the power supply plug and close the water cock.
- Open the right door
- The EPROM (1) is plugged to the electronic control and can be pulled off (Fig. 1). Install a new EPROM.



Hold the EPROM at both sides and pull it carefully (vertically) out of its socket, so that the pins are not bent. Position the new EPROM straight over the socket and carefully insert it.

- Close the right door.
- Open the water cock, connect the power supply plug and switch on the main switch.
- Close the left door.

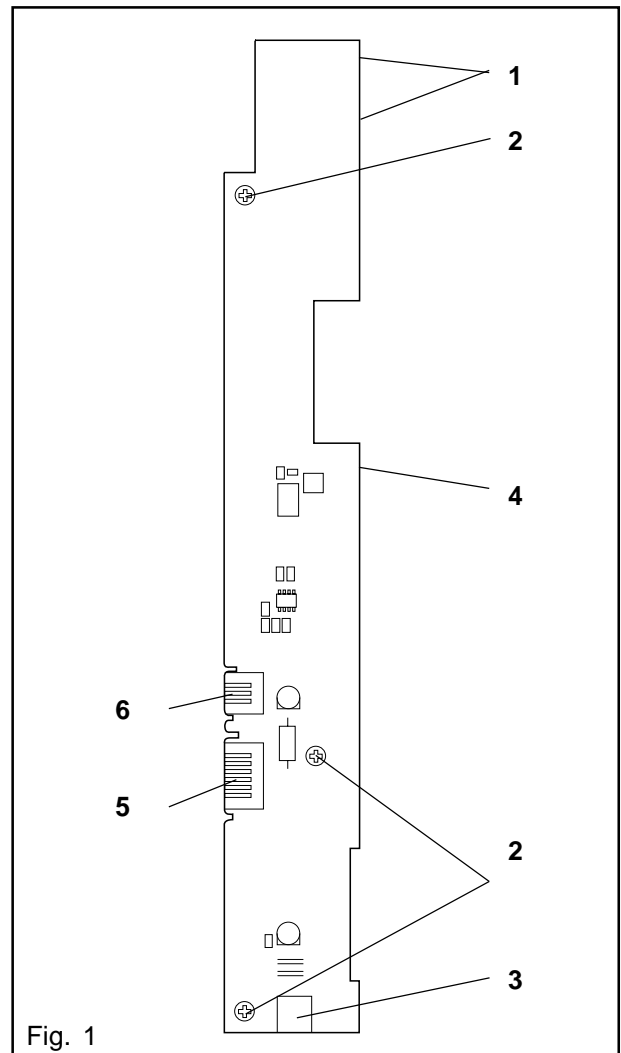


K.1.6 Dismounting the Sensor Board

- Open the left door.
- Switch off the main switch, disconnect the power supply plug and close the water cock.
- Open the right door
- Disconnect the plugs (5, 6) (Fig. 1).
- Remove screws (2). Take off the sensor board (Fig. 1).
- Mounting is done in reverse order.

Legend for Fig. 1:

- 1 Cup/pot sensor
- 2 Fastening screws (3 pieces)
- 3 Potentiometer for optical sensor (cup/pot identification)
- 4 Cup carrier sensor
- 5 Cable harness to the electronic control
- 6 Cable harness to the drip tray sensor

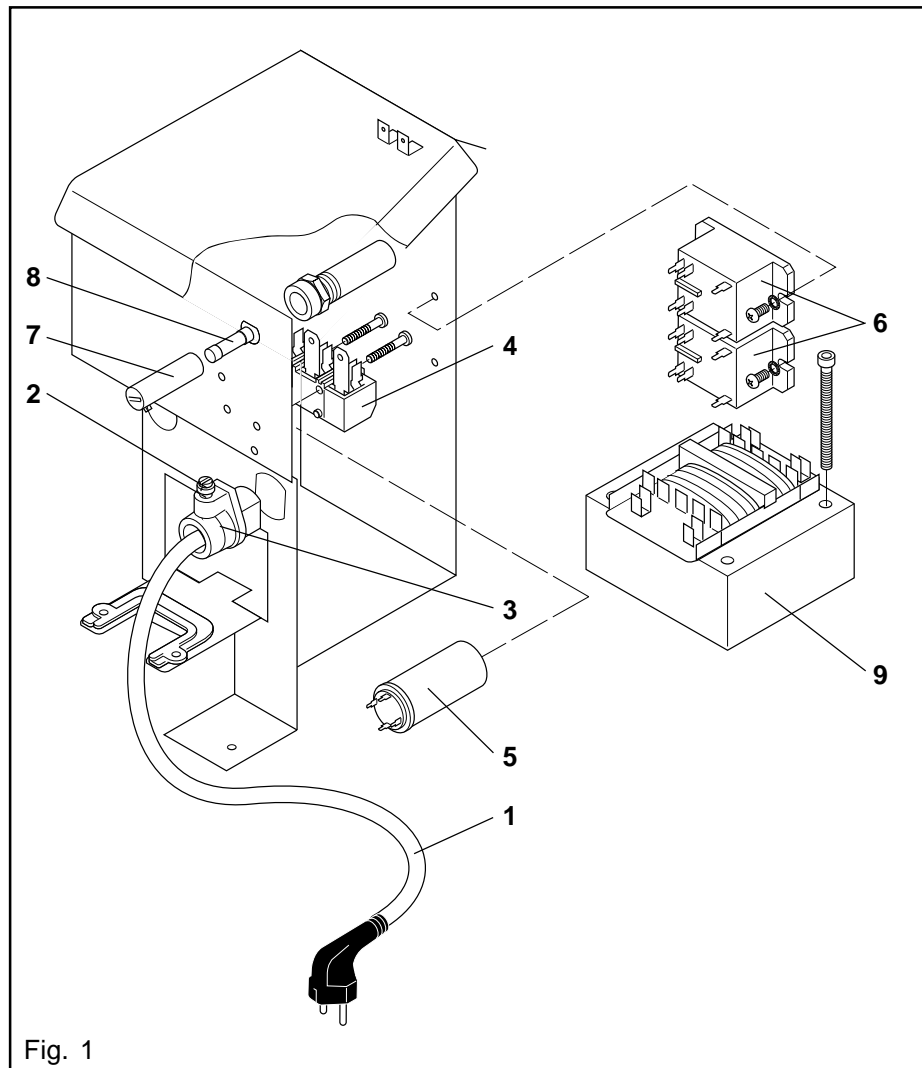


K.2 Functional Descriptions

K.2.1 Overview of the Power Supply Components

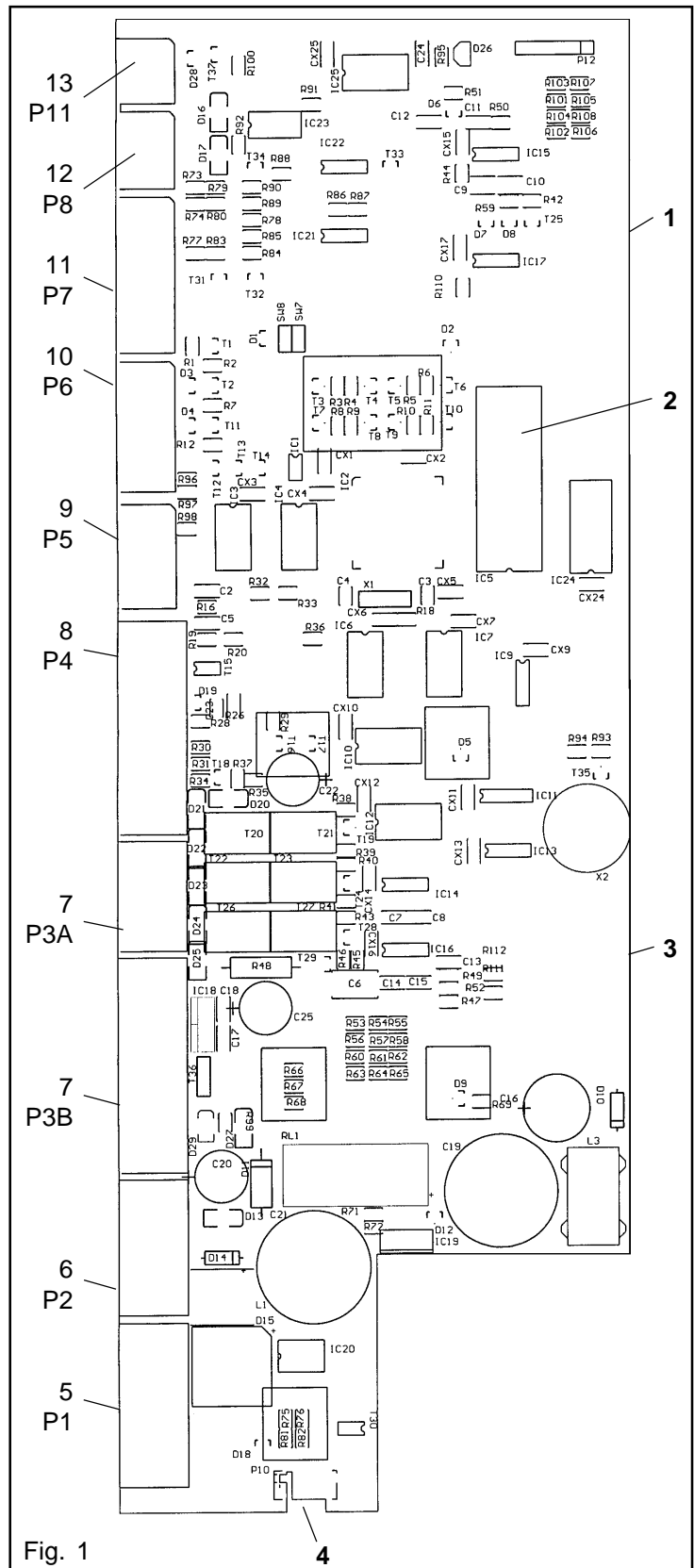
Main components of the power supply unit (Fig. 1):

- 1 Power supply cable, cpl.
- 2 Tension relief screw
- 3 Cable conduit
- 4 Terminal strip
- 5 Radio shielding filter
- 6 Relay
- 7 Fuse holder cap
- 8 Fuse
- 9 Transformer

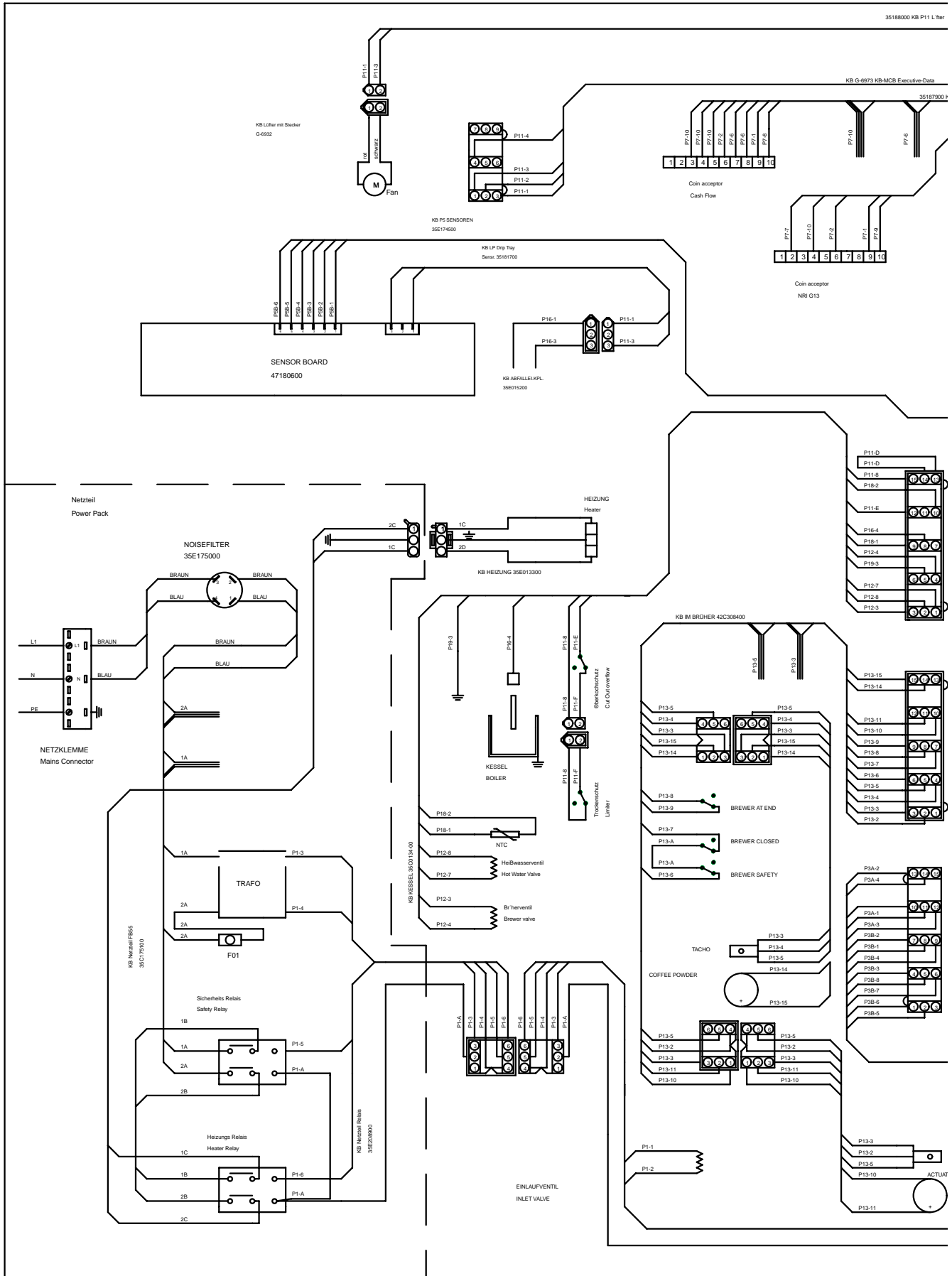


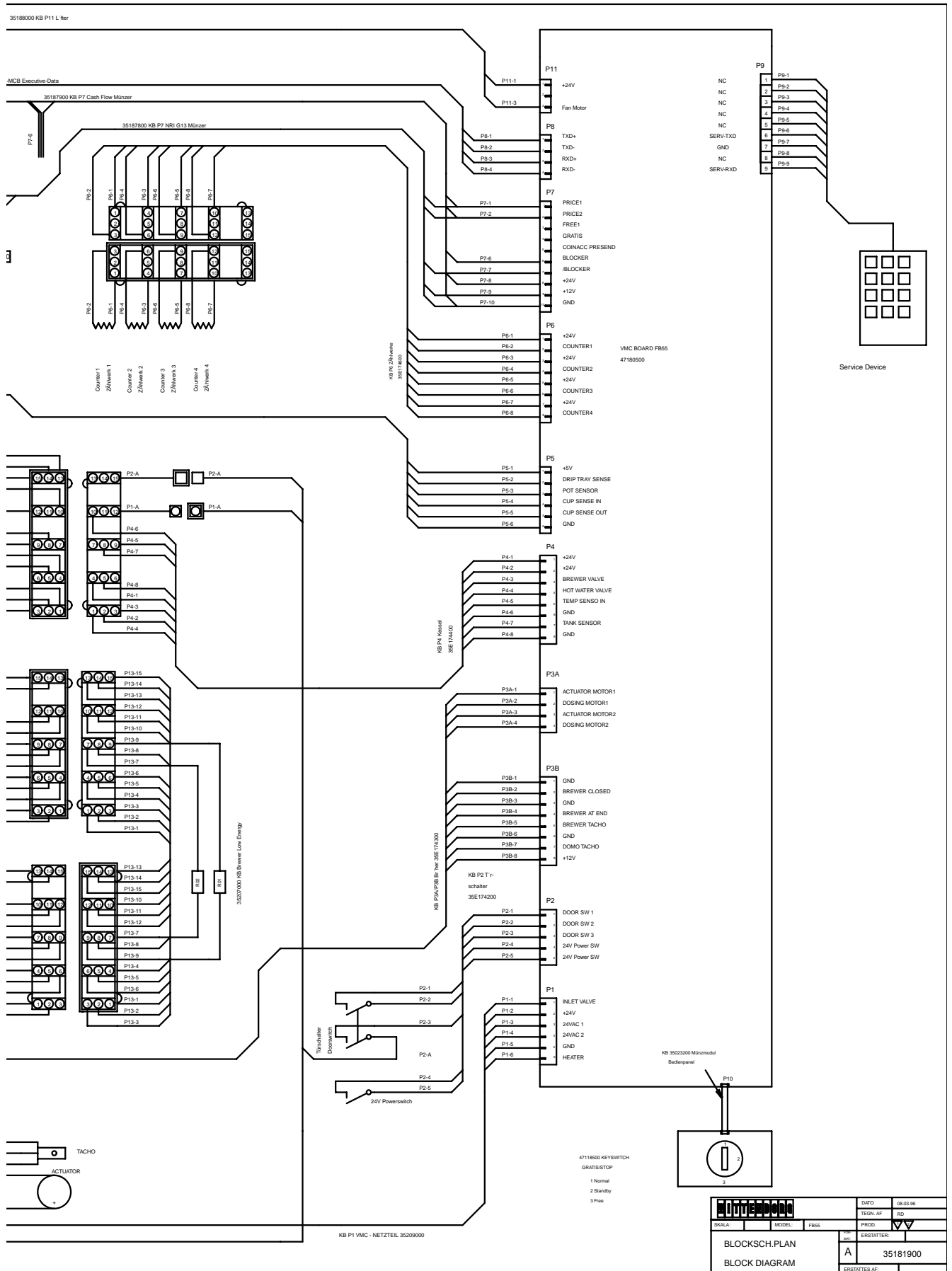
K.2.2 Overview of the Control Unit Components

- 1 Rinsing button
- 2 EPROM
- 3 Connection for the service device
- 4 Key switch "Gratis stop" (option)
P10
- 5 Cable harness VMC power supply unit, P1 with cable harness power supply unit relay
- 6 Cable harness to the safety switch, P2
- 7 Cable harness to the brewer, P3A, P3B
- 8 Cable harness to the boiler/valves, P4
- 9 Cable harness to the sensor board, P5
- 10 Cable harness to the counters (option), P6
- 11 Cable harness to the coin module (option), P7, (for installed coin modules NRI G13 and Mars Cashflow 350)
- 12 Executive interface, P8, (for external paying systems)
- 13 Cable harness to the fan (option), P11



K.3 Electrical Diagrams





DATE		08.03.99
TECHN. AF		BD
PROJ.		▼▼
ERSTATER:		
BLOCKSCH. PLAN		35181900
BLOCK DIAGRAM		
ERSETZTES AP:		