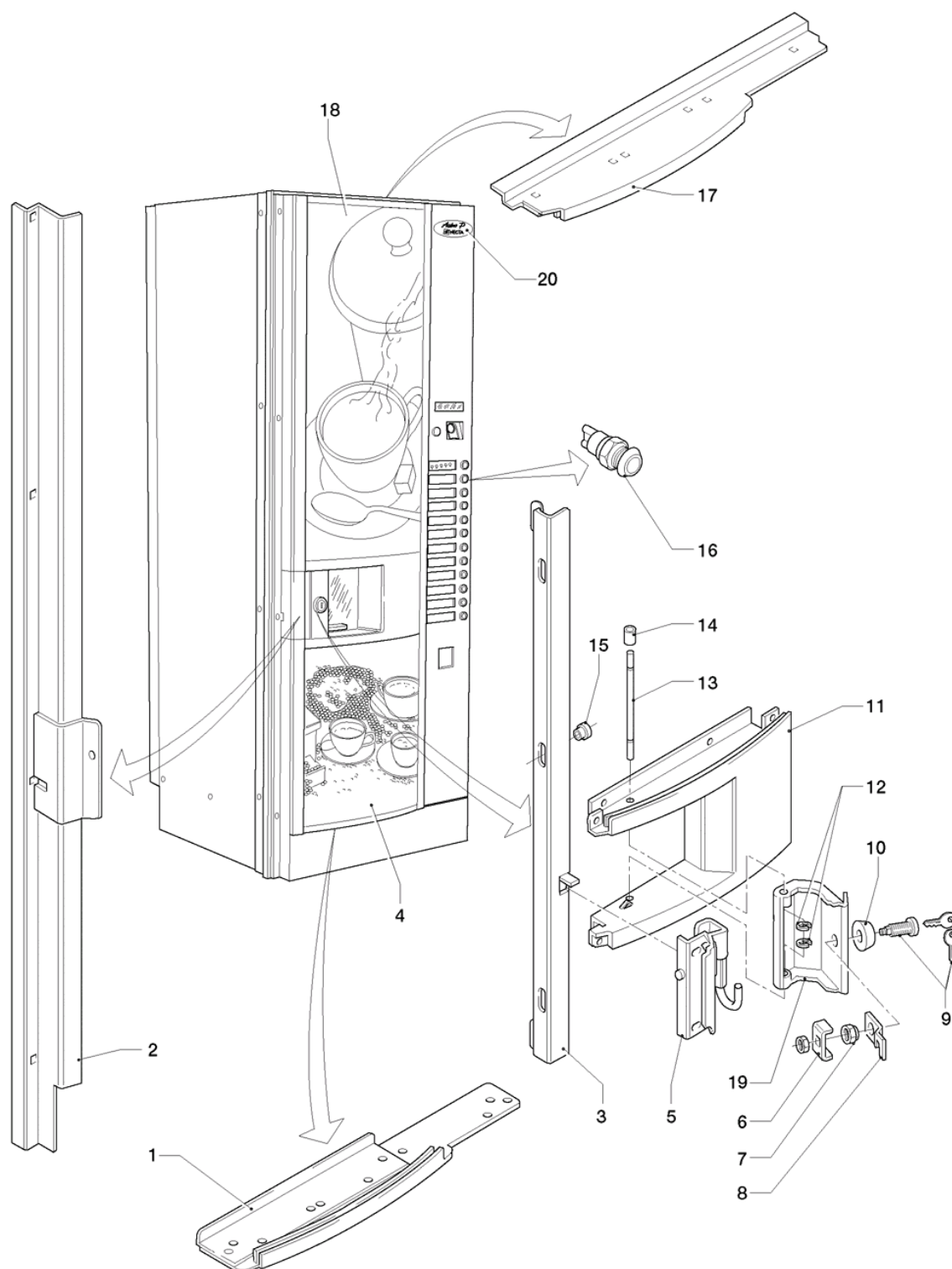


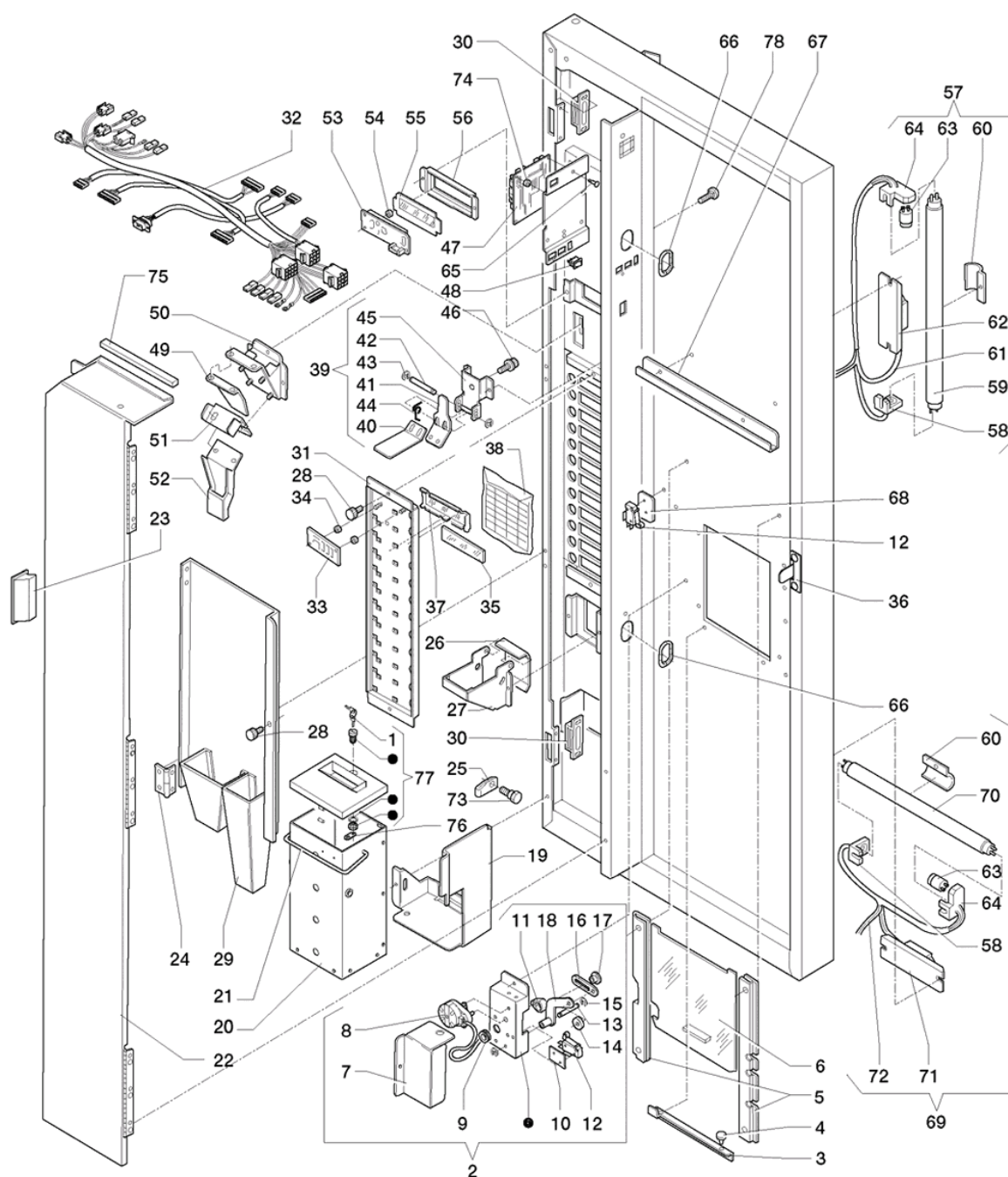
## ASTRO P FRESH-BREW INSTANT





---

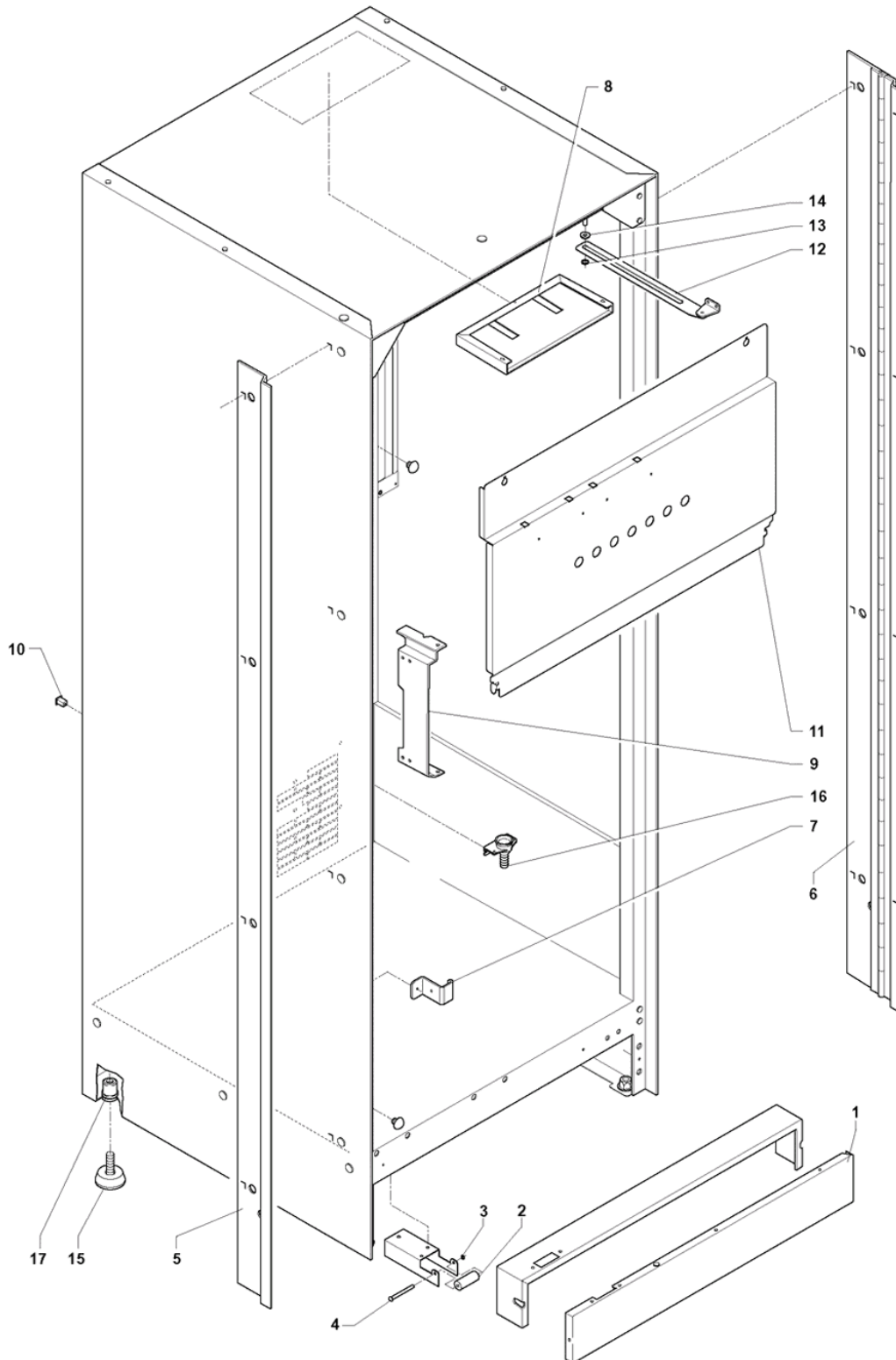
	<b>Code</b>	<b>Description</b>	<b>Notes</b>
1	0V2908	LOWER HEAD ELEMENT	
2	250382	LEFT DOOR PROFILE	
3	0V2895	DOOR CLOSING ROD	
4	0V2881	LOWER PHOTOGRAFIC PANEL	
5	0V2903	DOOR OPENING MECHANISM	
6	0V2997	LATCH BOLT GUIDE PLATE	
7	0V2998	LATCH BOLT STOP BUSH	
8	0V2865	LATCH	
9	0V2902	RIELDA LOCK	
10	0V2999	LOCK PROTECTION BUSHING	
11	0V2910	DISPENSING OPENING	
12	093171	OUTER FIXING COLLAR DIAM MM6	
13	0V2871	SLIDER LOCK PIN	
14	0V2913	PIN PROTECTION BUSH	
15	0V2869	LOCK ROD SPACER	
16	0V2891	SELECTION BUTTON	
17	0V2912	UPPER HEAD ELEMENT	
18	0V2880	UPPER PHOTOGRAFIC PANEL	
19	250134	SLIDER	
20	250376	LOGO PLATE	



	<b>Code</b>	<b>Description</b>	<b>Notes</b>
1	092218	PASSE-PARTOUT LOCK K	
2	0V2904	SLIDER LOCK	
3	0V2863	SLIDER STOP	
4	098833	BUFFER	
5	0V2896	SLIDER GUIDES	
6	0V2882	DISPENSING OPENING LID	
7	0V2859	COVERING	
8	099617	MOTOREDUCER 12G/1 MIN.	
9	090021	WHIPPING DIAM 10,5 MM	
10	0V2875	INSULATING PLATE	
11	099540	CAM	
12	0V1931	MICROSWITCH 'UL'	
13	0V2872	LEVER PIN	
14	0V2879	WHEEL	
15	091287	OUTER FIXING COLLAR	
16	0V3287	SLIDER LOCK-OUT ROD	
17	0V2873	CAM PIN	
18	0V2897	SLIDER LOCK-OUT LEVER	
19	0V2854	COIN BOX SUPPORT	
20	0V3269	COIN BOX	
21	0V2029	COIN-BOX HANDLE	
22	250385	BOX COVER	
23	0V3659	HANDLE	
24	988308	HINGE	
25	0V3296	COIN-BOX FASTENER	
26	0V2867	COIN RECOVERY OPENING	
27	0V2858	COIN RECOVERY CHUTE	
28	096977	KNURL	
29	0V2907	COIN MECH SUPPORT AND COIN CHUTE	
30	987939	MAGNETIC LOCK	
31	0V2893	PRODUCT LABELS SUPPORT	
32	250379	DOOR WIRING	
33	099661	CARD-LED	
34	099639	SPACER	
35	251006	'SELECTA' PRODUCT TAGS -S-	
36	0V2017	DOOR MICRO-SWITCH ACTUATOR	
37	0V2883	PRODUCT LABEL GLASS	
38	0V3368	PRICE PLATE - EURO 0,05-	
39	0V2898	COIN RETURN ASSY.	
40	0V2866	COIN RETURN LEVER	
41	0V2861	COIN RETURN CONTROL LEVER	
42	099355	CHANGE GIVING PIN	
43	093754	BENZING COLLAR QUICKBLOCK BQ DIAM MM	
44	099356	SPRING FOR CHANGE	
45	0V2862	FEELER SUPPORT	
46	0V2870	COIN RECOVERY BUTTON	

---

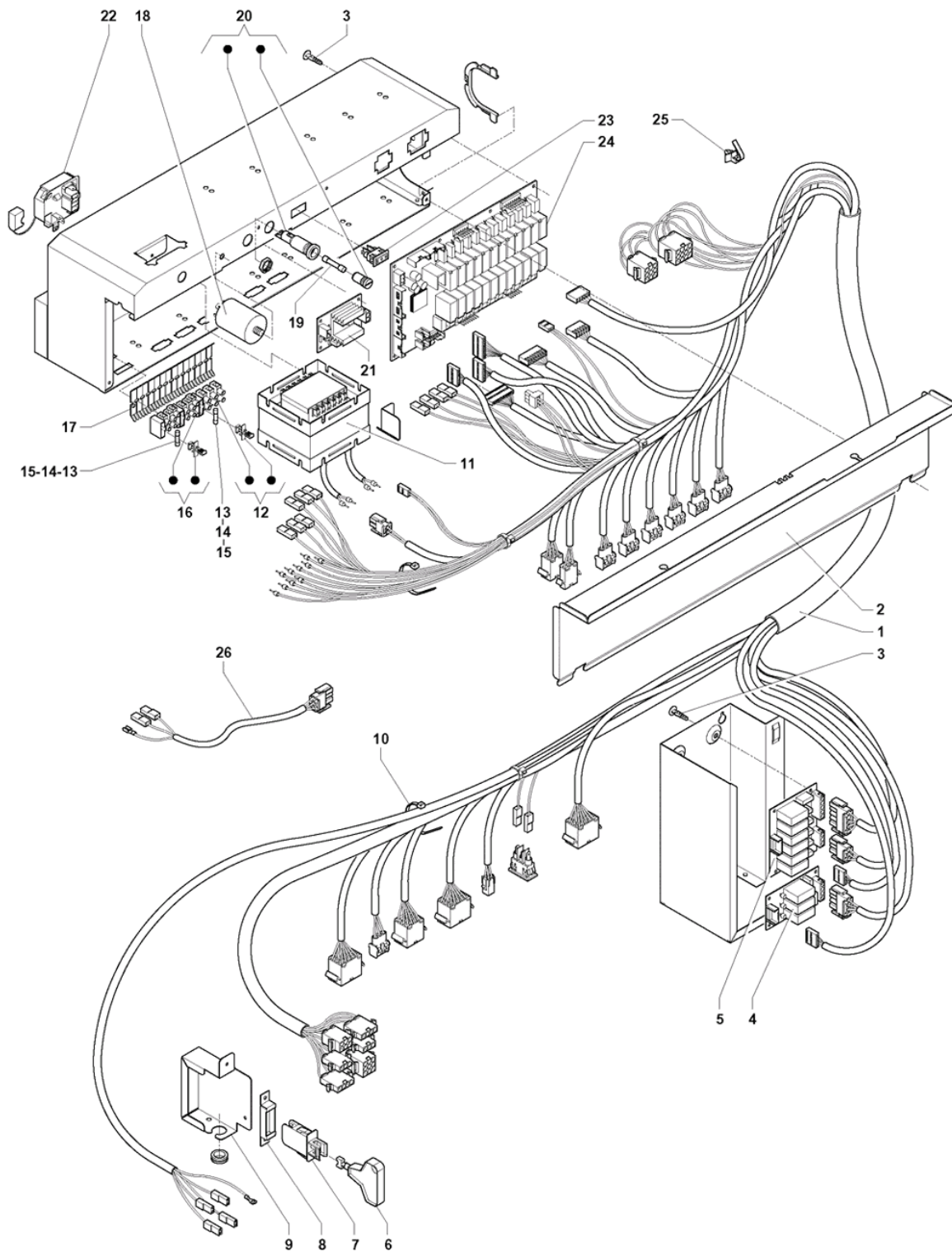
	<b>Code</b>	<b>Description</b>	<b>Notes</b>
47	0V3834	CPU BOARD (TO BE PROGRAMMED)	
48	097807	BUTTON	
49	0V3299	BAFFLE	
50	0V3305	COIN INSERT	
51	0V3298	COUPLER FOR SLIDE	
52	0V3304	UPPER CHUTE COINS	
53	251659	LARGE DISPLAY 2X16 BLUE-EUROPE	
54	0V2876	DISPLAY SPACER	
55	0V2877	DISPLAY GLASS	
56	0V2860	DUSPLAY SUPPORT	
57	0V2899	UPPER LAMP PANEL	
58	099783	LAMP-HOLDER	
59	0V2235	LAMP L16W/25	
60	0V2081	LAMP PROTECTION	
61	0V2886	UPPER LAMP WIRING	
62	0V3026	BALLAST EC16A27	
63	091802	STARTER TYPE S10	
64	987958	LAMP-HOLDER W/STARTER-HOLDER	
65	097175	CARD SPACER	
66	093916	WHIPPING OVAL	
67	0V2005	DOOR CONTAINER SUPPORT	
68	090681	INSULATING DISK	
69	0V2900	LOWER LAMP PANEL	
70	099152	LAMP	
71	0V1011	BALLAST	
72	0V2887	LOWER LAMP WIRING	
73	090615	COLLAR SCREW	
74	0V1431	SPACER	
75	0V1429	ADHESIVE SEAL (A METER)	
76	098551	BOLT	
77	090861	CYLINDER LOCK TYPE K	
78	986613	SCREW M5X15	



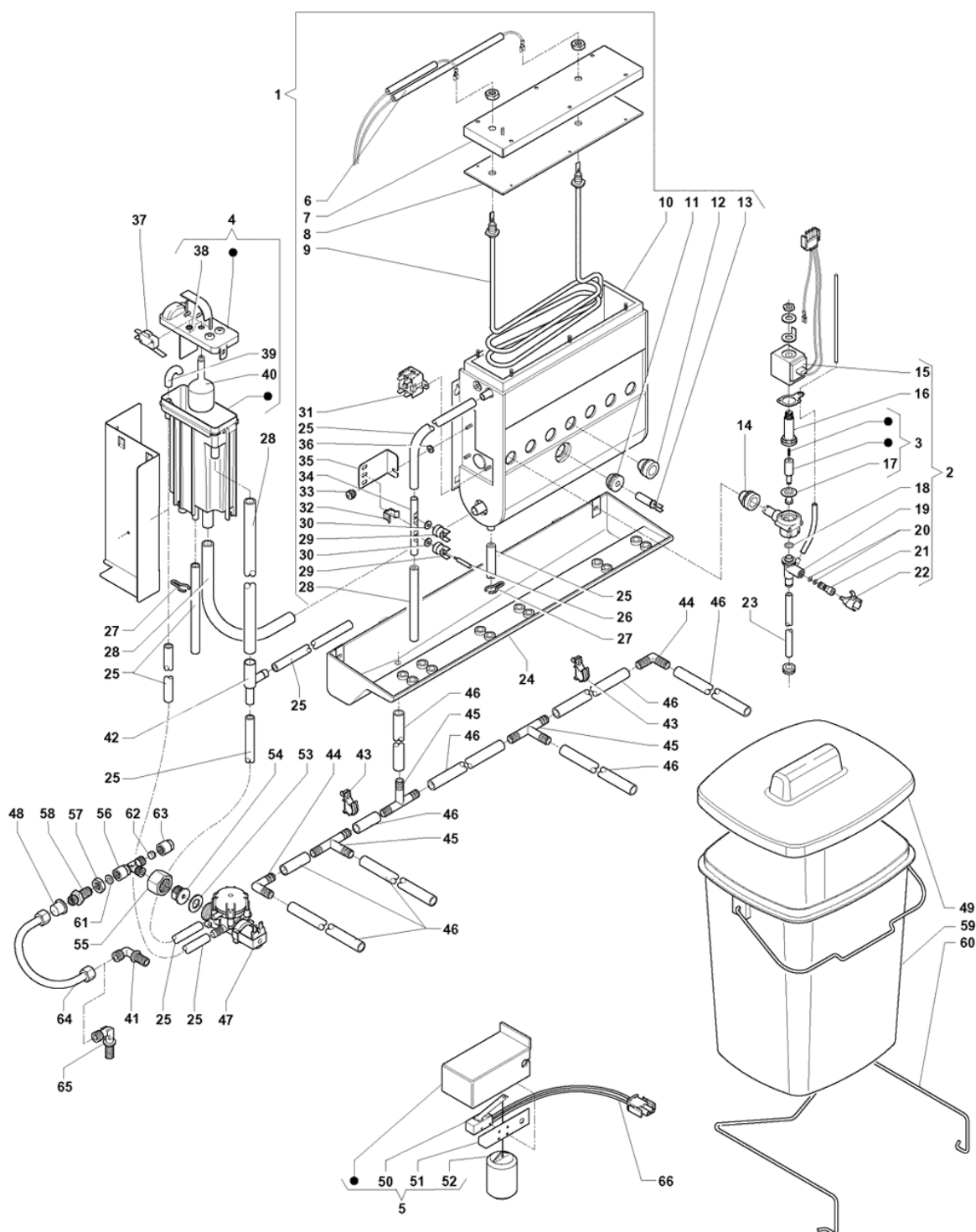
---

	<b>Code</b>	<b>Description</b>	<b>Notes</b>
1	250384	FEET COVERING	
2	250374	DOOR ROLLER	
3	091959	BENZING COLLAR DIAM MM4	
4	0V0000	PIN	
5	250373	CABINET LH ARMOR PLATING	
6	250383	DOOR HINGE	
7	0V3632	LOCK COUPLER BRACKET	
8	250219	DOCUMENTATION HOLDER	
9	250632	SHELF SUPPORT -SPAZIO P-	
10	094111	INSULATING DOLLY BLOCK	
11	250387	BOILER COVER	
12	0V2160	DOOR STOP	
13	093470	FLAT WASHER MM 6,4	
14	0V2043	DOOR STOP SPACER	
15	252124	4 FEET KIT	
16	250468	TRAY FUNNEL	
17	250037	THREADED INSERT M6	





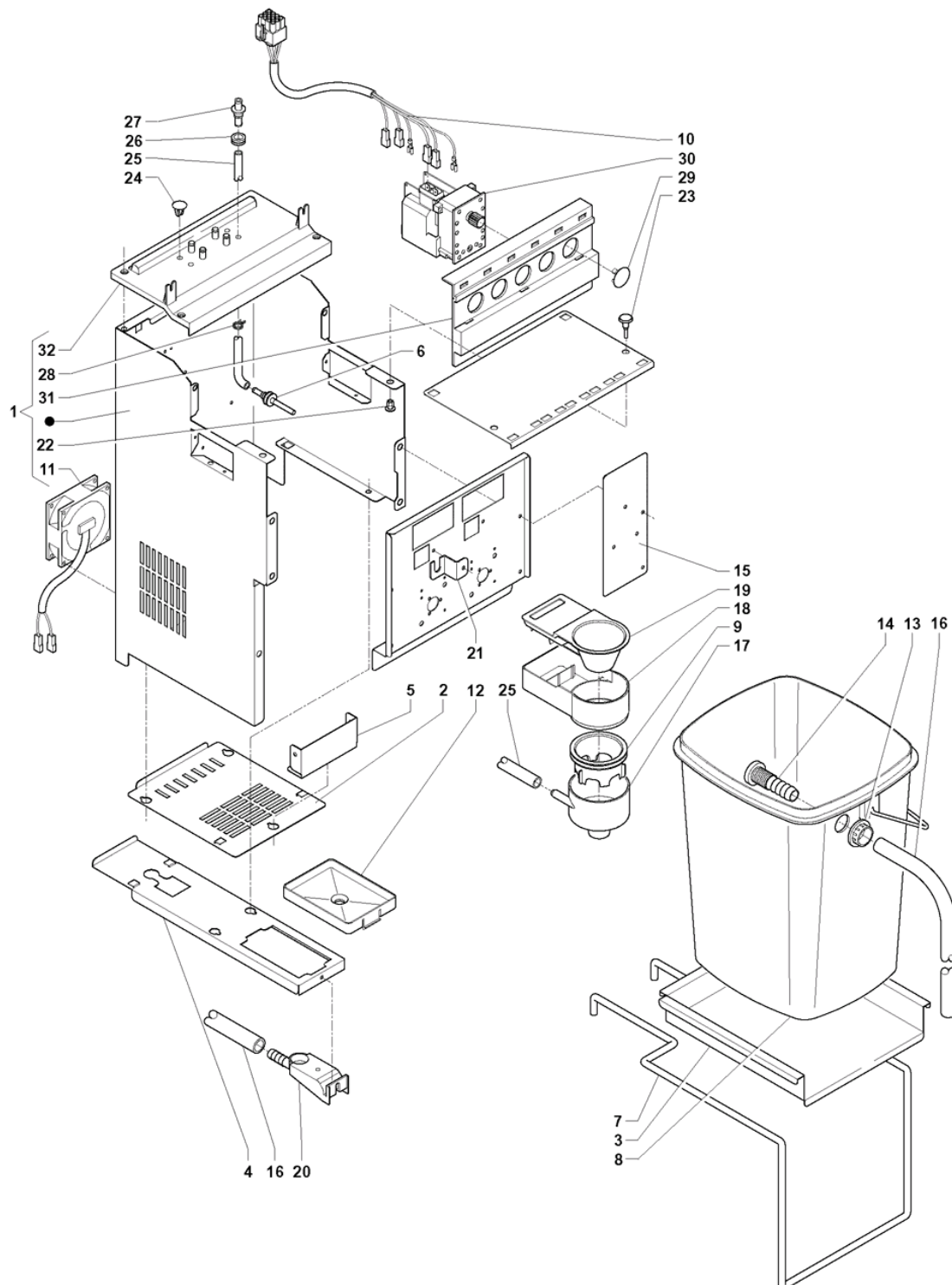
	<b>Code</b>	<b>Description</b>	<b>Notes</b>
1	250172	MAIN WIRING	
2	251015	POWER UNIT COVER	
3	097175	CARD SPACER	
4	250463	3-RELAY EXPANSION CARD	
5	0V3202	OUT/R CARD, 6 RELAYS	
6	0V1654	SWITCH KEY	
7	097796	SWITCH	
8	098797	SWITCH SUPPORT	
9	250142	SWITCH COVER	
10	090148	CLIP	
11	0V0014	TRASFORMER	
12	097241	3-POLE TERMINAL BOARD W/CARRIER	
13	097259	FUSE 5X20 4A DELAYED ACTION	
14	096923	FUSE 5X20 1 AMP DELAYED ACTION	
15	096922	FUSE 5X20 800M AMP	
16	098793	TERMINAL BOARD WITH FUSE-HOLDER	
17	097242	SUB-TERMINAL BOARD	
18	0V3512	NET FILTER	
19	095636	FUSE 15 A	
20	0V3201	FUSE HOLDER	
21	0V2143	BOILER CONTROL BOARD	
22	098796	TERMINAL BOARD	
23	096921	POWER POINT 10 AMP	
24	0V3671	ACTUATION BOARD (TO BE PROGRAMMED)	
25	098165	WIRE-FIXING	
26	0V3667	SUGAR DOSING UNIT WIRING	



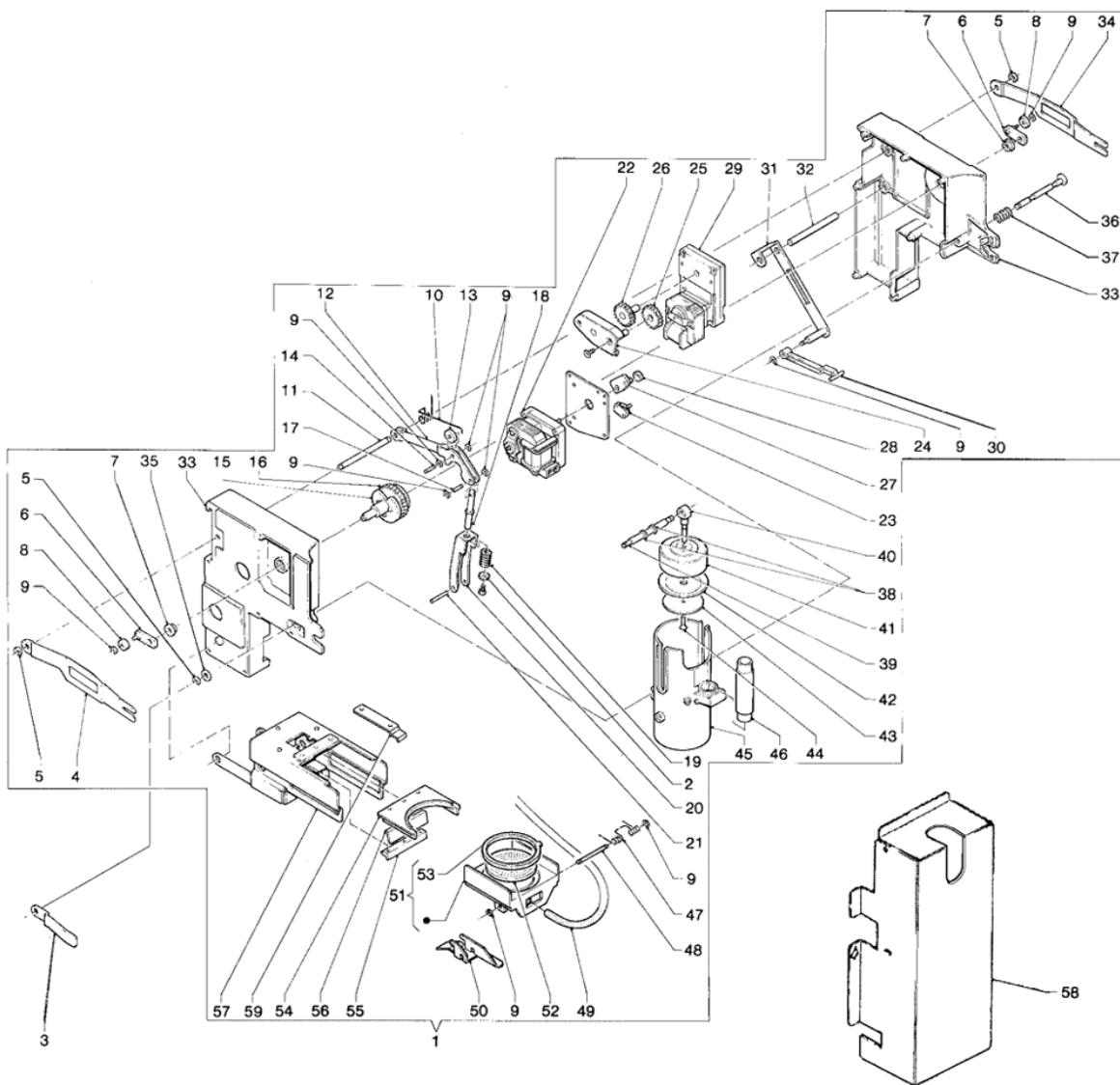
	<b>Code</b>	<b>Description</b>	<b>Notes</b>
1	0V2100	INSTANT BOILER ASSEMBLY	
2	0V2153	INSTANT PROD. ELECTROVALVE	
3	0V3550	ELECTROVALVE NUCLEUS	
4	0V1133	AIR-BREAK ASSEMBLY	
5	0V2906	LIQUID WASTE FLOAT ASSY.	
6	0V2118	INSTANT BOILER WIRING	
7	0V2155	BOILER LID	
8	0V2055	BOILER LID SEAL	
9	0V2109	2000W- 220V HEATING ELEMENT	
10	0V2193	BOILER ASSEMBLY	
11	099918	GASKET FOR FEELER	
12	099928	STOPPER GASKET	
13	0V0157	FEELER	
14	099847	GASKET	
15	0V3359	LOCK ELECTROVALVE REF.0V2153	
16	0V3552	VALVE BUSH	
17	0V3551	MEMBRANE-GASKET	
18	0V3554	GASKET O-RING	
19	0V3553	LOWER ELECTRICVALVE BODY	
20	099064	ADJUSTING-SCREW-GASKET	
21	0V3555	ADJUSTING-SCREW + O-RING	
22	0V3556	LOWER BODY STOP	
23	097511	SILICONE HOSE 6X9 BROWN	
24	0V4224	BOILER TRAY	
25	097512	SILICONE HOSE 6X12 BROWN	
26	0V2074	THERMOSTAT ACTUATOR	
27	092703	TUBE CLAMP	
28	097515	SILICONE HOSE 10X16 BROWN	
29	0V2129	THERMOSTAT 82 C	
30	094597	COPPER WASHER	
31	0V1364	105 DEGREE SAFETY THERMOSTAT	
32	098484	HOSE FIXING	
33	097699	KNURL M4	
34	099458	TUBE FOR 2 THERMOSTAT	
35	099916	THERMOSTAT SUPPORT	
36	093179	INSULATING WASHER MOTOREDUCTER	
37	0V1141	MICROSWITCH	
38	090421	GASKET	
39	0V1749	WATER/AIR-BREAK CONNECTION	
40	0V1126	AIR-BREAK FLOAT	
41	092651	INTERMEDIATE ELBOW LINK	
42	094185	CODENSE RECOVERY UNION	
43	098459	WIRE-CLIP	
44	094571	UNION 90 DEGREES	
45	096552	UNION T-SHAPE	
46	093628	HOSE VIPLA TRANSPARENT DIAM MM 14X1	

---

	<b>Code</b>	<b>Description</b>	<b>Notes</b>
47	097383	ELECTROVALVE WATER-INLET 220V	
48	099805	STOPPER	
49	0V3301	COVER	
50	093308	MICROSWITCH SERIE RLL/D	
51	092761	INSULATING DISK	
52	094294	FLOAT	
53	092364	UNION GASKET 3/4	
54	093952	WATER INLET CONNECTION NIPPLE	
55	093951	TIGHTENING NUT G 3/4	
56	095586	BANJO UNION T-SHAPE	
57	092652	LOCK NUT 1/4 REV	
58	0V2199	UNION 1/4	
59	097530	SQUARE WASTE BASKET BROWN	
60	095730	BUCKET FASTENER	
61	092388	TIGHTENING RING	
62	096656	PLUG COLLAR	
63	092387	TIGHTENING NUT	
64	097378	CONNECTION PIPE	
65	094334	INTERMEDIATE ELBOW LINK	
66	250380	SPOUT-ADDITIONAL WIRING	



	<b>Code</b>	<b>Description</b>	<b>Notes</b>
1	0V4312	BRACKET 231 F.B.	
2	0V2244	BRACKET COVER 231	
3	0V2245	BUCKET SUPPORT F.B.	
4	0V2246	TRAY SUPPORT 231	
5	0V2247	F.B. UNIT LOWER SUPPORT	
6	099329	FUNNEL NOZZLE D. 3.4	
7	0V2250	BUCKET SUPPORT BRACKET	
8	0V2251	WASTE CONTAINER F.B.	
9	0V2252	WATER FUNNEL RING F.B.	
10	0V2253	BRACKET WIRING F.B.	
11	0V2255	AXIAL FAN	
12	0V3812	BRACKET TRAY	
13	099643	COLLAR	
14	099642	RUBBER HOLDER	
15	0V2010	MIXER COVER	
16	093628	HOSE VIPLA TRANSPARENT DIAM MM 14X1	
17	0V1535	WATER FUNNEL	
18	0V1537	SUCTION DRAWER	
19	0V1534	DRAWER COVER	
20	0V4213	RUBBER PIECE HOLDER	
21	0V2016	WATER OUTLET SPOUT SUPPORT	
22	0V2035	BUTTON	
23	0V2146	BUTTON	
24	250162	PLUG	
25	097511	SILICONE HOSE 6X9 BROWN	
26	0V2127	FAIRLEAD	
27	0V2058	BRACKET WATER CONNECTION	
28	094329	HOSE CLIP	
29	0V4199	PLUG	
30	250004	RATIOMOTOR 138 RPM	
31	0V4205	RATIOMOTOR SUPPORT 231	
32	0V4203	SUPPORT 231	

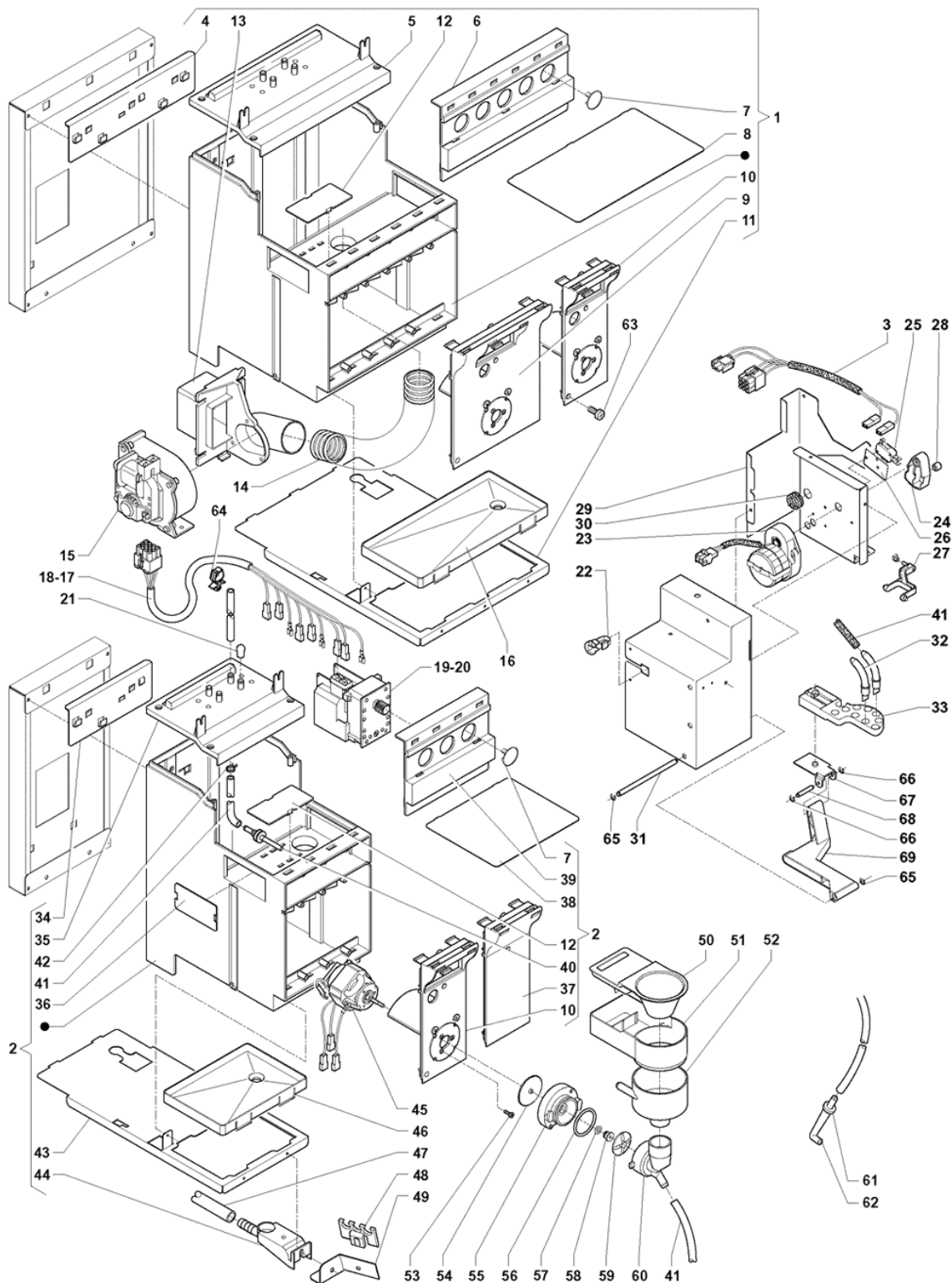




	<b>Code</b>	<b>Description</b>	<b>Notes</b>
1	099906	FRESH BREW GROUP 'COFFEE'	
2	093716	PLATE WASHER SELECTION OPENING	
3	0V0166	LEVER	
4	099945	LEVER 'LEFT'	
5	093171	OUTER FIXING COLLAR DIAM MM6	
6	099950	CRANK	
7	099947	BUSH	
8	099951	BEARING	
9	098818	STOPPING RING D.4	
10	0V0275	SPRING	
11	099944	PIN	
12	099956	LEVER	
13	099957	BEARING	
14	099958	PIN FOR BEARING	
15	099949	CAM	
16	099948	DRIVING SHAFT	
17	099959	PIN FOR LEVER	
18	099960	ROD	
19	099962	SPRING	
20	099961	SCREW	
21	0V2375	PIN	
22	099970	MOTOREDUCER	
23	096355	MICRO SWITCH	
24	099955	GEAR SUPPORT	
25	099954	WHEEL	
26	099953	SHAFT WITH WHEEL	
27	099971	CRANK WITH PIN	
28	099972	ROLLER	
29	0V0607	REDUCTION GEAR MOTOR	
30	099969	ROD	
31	099968	LINK-BLOCK	
32	090203	STIRRER BAR WEIGHT L=95	
33	099935	SHOULDER 'RIGHT AND LEFT'	
34	099946	LEVER 'RIGHT'	
35	096988	WASHER	
36	099940	PIN	
37	099941	SPRING	
38	987948	LOCKING WASHER	
39	099938	PIN	
40	099937	PISTON ROD	
41	098525	PISTON F.B.	
42	098444	PISTON GASKET	
43	098614	PISTON-BOTTOM	
44	093469	SCREW BRASS TSP M5X16	
45	099939	INFUSION CHAMBRE	
46	0V0543	FRESH-BREW EXTENSION	

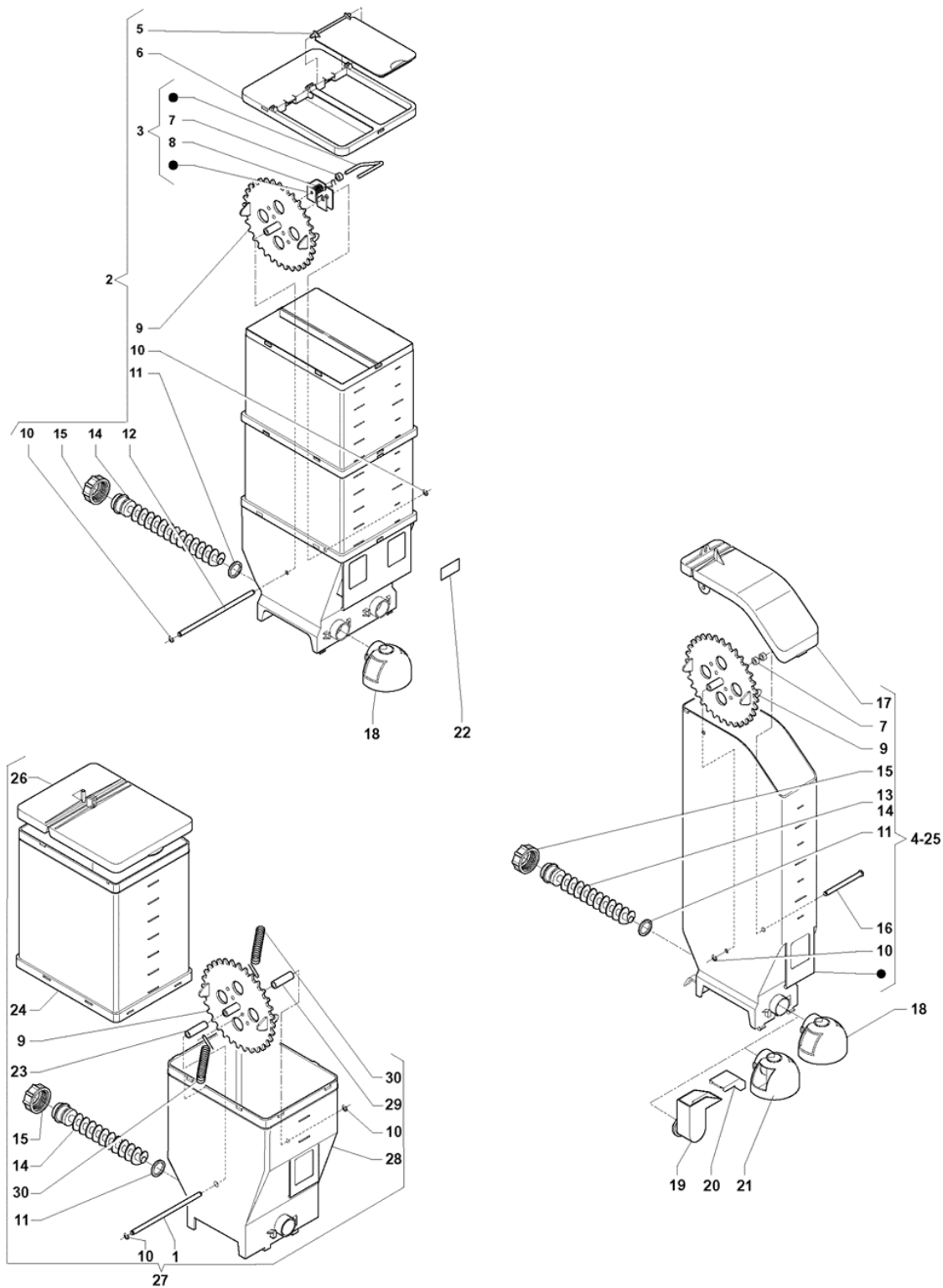
---

	<b>Code</b>	<b>Description</b>	<b>Notes</b>
47	0V0177	SPRING	
48	099966	PIN FOR SPRING	
49	097511	SILICONE HOSE 6X9 BROWN	
50	0V0176	LEVER	
51	250559	F.B. FILTER HOLDER COMPLETE	
52	098441	COFFEE FILTER	
53	250560	GASKET-FILTER HOLDER	
54	099974	SPATULA-HOLDER	
55	099976	DOLLY BLOCK	
56	099975	SPATULA	
57	099973	SLEDGE	
58	0V2262	F.B. UNIT COVER	
59	0V1895	FIXING PLATE	

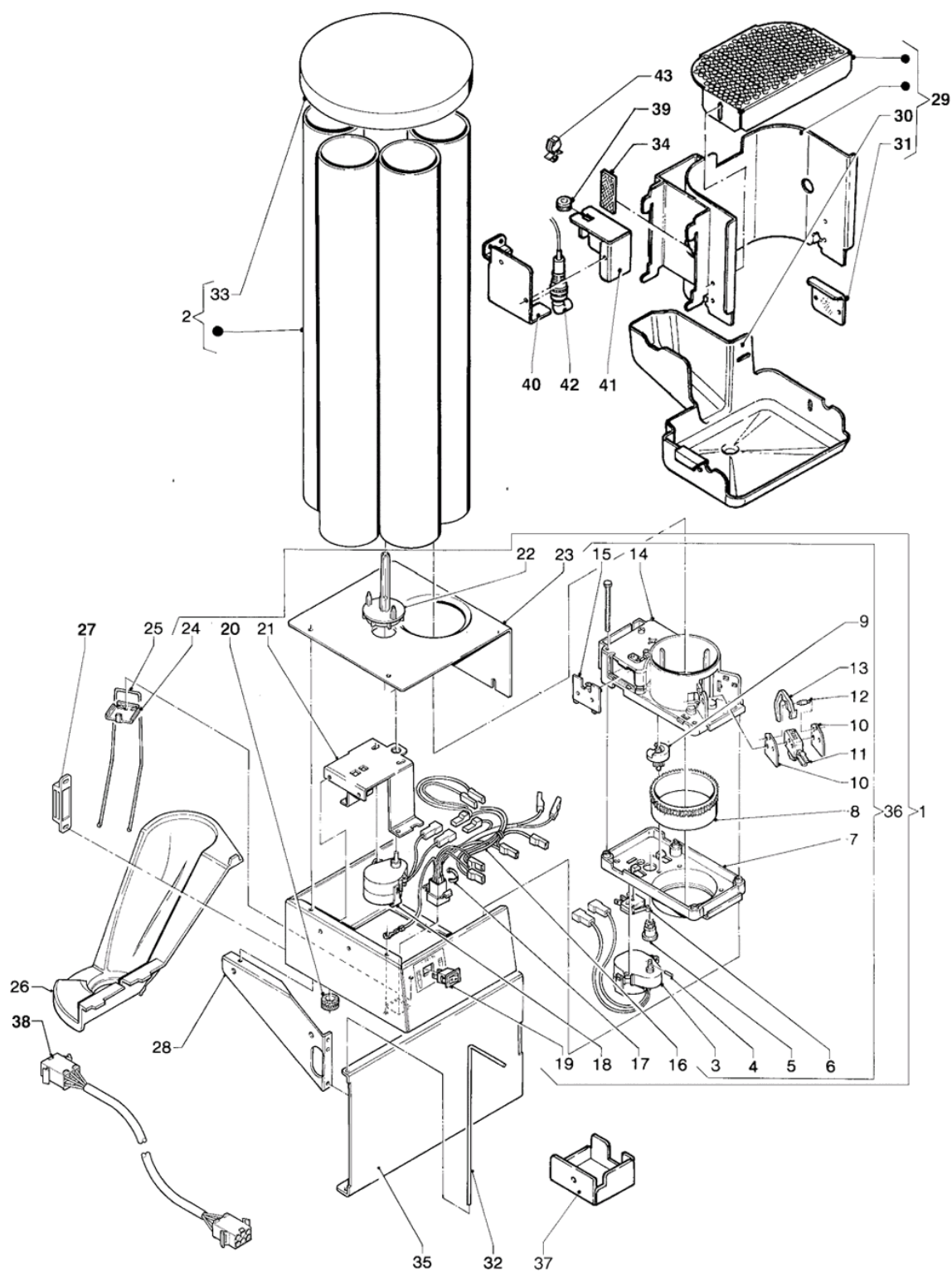


	<b>Code</b>	<b>Description</b>	<b>Notes</b>
1	0V4201	MIXER BRACKET 231	
2	0V4202	MIXER BRACKET 154	
3	0V2123	MOBILE SPOUT WIRING	
4	0V4197	BRACKET SUPPORT 231	
5	0V4203	SUPPORT 231	
6	0V4205	RATIOMOTOR SUPPORT 231	
7	0V4199	PLUG	
8	0V4194	CONTAINER SUPPORT 231	
9	0V4209	DOUBLE SUPPORT '1' MIXER	
10	0V4208	'1' MIXER SUPPORT	
11	0V4193	TRAY SUPPORT 231	
12	0V4211	AIR THROTTLER PLATE	
13	0V4210	FAN SUPPORT	
14	096459	HOSE DIAM 32	
15	098583	ELECTROVENTILATOR	
16	0V2050	BRACKET TRAY 231	
17	0V4216	BRACKET WIRING 231	
18	0V4215	BRACKET WIRING 154	
19	0V3726	RATIOMOTOR 78 RPM	
20	0V3725	RATIOMOTOR 52 RPM	
21	250162	PLUG	
22	096653	ANTITEAR WHIPPING	
23	0V2151	RATIOMOTOR	
24	0V2062	SPOUT MOTION CAM	
25	0V1931	MICROSWITCH 'UL'	
26	090681	INSULATING DISK	
27	0V2063	SPOT IDLE ROCKER	
28	099635	ROLLER	
29	0V1992	SPOUT BOX COVER	
30	090021	WHIPPING DIAM 10,5 MM	
31	0V2039	PIN FOR MOBILE SPOUT LINK	
32	097953	POINTED NOZZLE	
33	250163	SPOUT SUPPORT	
34	0V4198	BRACKET SUPPORT 154	
35	0V4204	SUPPORT 154	
36	0V4214	AIR FLOW CLOSING PLATE	
37	0V4207	'0' MIXER SUPPORT	
38	0V4196	CONTAINER SUPPORT 154	
39	0V4206	RATIOMOTOR SUPPORT 154	
40	0V4212	WATER NOZZLE	
41	097511	SILICONE HOSE 6X9 BROWN	
42	094329	HOSE CLIP	
43	0V4195	TRAY SUPPORT 154	
44	0V4213	RUBBER PIECE HOLDER	
45	098808	MOTORMIXER	
46	0V2052	BRACKET TRAY 154	

	<b>Code</b>	<b>Description</b>	<b>Notes</b>
47	093628	HOSE VIPLA TRANSPARENT DIAM MM 14X1	
48	098728	PIPES-SUPPORT	
49	0V2249	DOUBLE ESPRESSO HOSE SUPPORT	
50	0V1534	DRAWER COVER	
51	0V1537	SUCTION DRAWER	
52	0V1535	WATER FUNNEL	
53	099773	SCREW	
54	099889	DISK	
55	097911	FLANGE FOR MIXER	
56	094540	GASKET O-RING 3125	
57	099880	GASKET	
58	097917	BUSH SEAL	
59	097916	MIXER VENTILATOR	
60	097912	CONVEYOR FOR MIXER	
61	099911	STOPPER FOR NOZZLE	
62	099910	DISTRIBUTOR NOZZLE	
63	097879	NICKELPLATED SCREW	
64	0V4200	CABLE RETAINER	
65	091959	BENZING COLLAR DIAM MM4	
66	091737	CIRCLIP DIN 6799	
67	0V2060	SPOUT COUPLING BRACKET	
68	0V2038	SHORT PIN FOR MOBILE SPOUTS	
69	0V2064	SPOUT MOTION LINK	

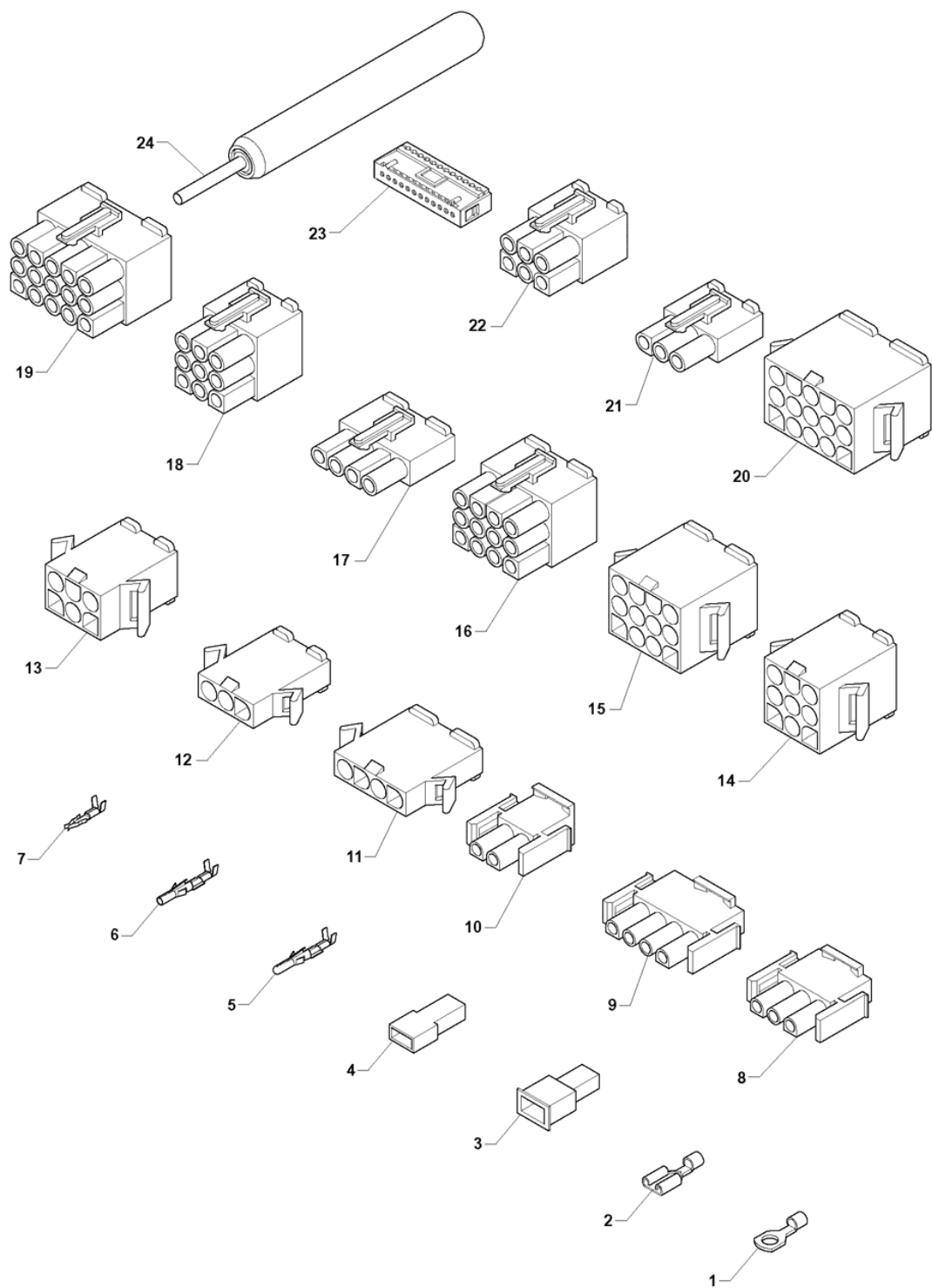


	<b>Code</b>	<b>Description</b>	<b>Notes</b>
1	0V0161	PIN FOR WHEEL	
2	0V3682	LEFT NORMAL AUGER CONTAINER+BEATER	
3	099494	CANISTER-BEATER	
4	0V2173	NORMAL AUGER CONTAINER	
5	0V3723	COVER	
6	0V3722	CONTAINER EXTENSION COVER	
7	098812	SPACER	
8	099442	SPRING	
9	095936	WHEEL	
10	091959	BENZING COLLAR DIAM MM4	
11	095829	GASKET O-RING	
12	0V3728	WHEEL PIN	
13	098608	LONG SCROLL	
14	098609	SCROLL	
15	095849	CONTAINER RING NUT	
16	0V1962	PIN FOR WHEEL	
17	0V2048	POWDER CONTAINER LID	
18	0V1536	CONTAINER OPENING	
19	0V2070	RH POWDER FEEDER	
20	0V2076	CONVEYOR COVER	
21	0V3719	SQUARE OPENING	
22	097502	NAMEPLATE GROUP CONTAINER INSTANT P	
23	0V0163	LEFT SPACER	
24	0V2046	CONTAINER EXTENSION	
25	0V2174	LONG AUGER CONTAINER	
26	0V0421	COVER	
27	0V0160	FRESH-BREW CANISTER COMPLET	
28	0V2456	CONTAINER BASE	
29	0V0164	RIGHT SPACER	
30	0V0165	SPRING	





	<b>Code</b>	<b>Description</b>	<b>Notes</b>
1	0V0483	CUP DISPENSER DIAM.70-71	
2	099664	CUPS-CONTAINER	
3	099397	MOTOR REDUCTOR 6G/1 MIN.	
4	096904	ELASTIC PLUG 1,5X8	
5	098476	PINION	
6	0V1928	MICRO-SWITCH 'UL'	
7	098473	LOWER SHELL	
8	098477	TOOTHED RING	
9	098305	SCROLL DIAM.70/71	
10	092984	MICRO SUPPORT DISK	
11	092439	MICRO TYPE 'CHERRY'	
12	093419	MICRO DRIVE LEVER PIVOT	
13	092982	MICRO LEVER	
14	098474	UPPER SHELL	
15	098475	SHUTTER	
16	098704	CUP-DISTRIBUTOR-WIRING	
17	090148	CLIP	
18	098845	MOTOREDUCER	
19	097807	BUTTON	
20	098600	CHOCK	
21	098844	MOTOREDUCER SUPPORT	
22	098917	ROTATION DISC	
23	098846	CUPS-COVER	
24	093851	FORK BRACKET	
25	099633	FORK	
26	099542	CUP CHUTE 70-71	
27	097508	LOCKING MAGNET	
28	098850	CUPS-DISTRIBUTOR SQUARE SUPPORT	
29	0V3035	DISPENSING OPENING ASSY.	
30	0V2901	DISPENSING OPENING TRAY	
31	0V2878	PHOTOCELL PROTECTION GLASS	
32	099631	PIN	
33	0V3658	CUP CONTAINER COVER	
34	0V0906	CATADIOPTRIC PLATE	
35	0V1754	CUPS-SHELF	
36	0V2107	CUP DISPENSER 70/71	
37	0V2855	MOTOR COVER	
38	250381	ADDITIONAL WIRING CUP DISPENSER-	
39	093222	ANTITEAR WHIPPING	
40	0V2856	PHOTOCELL SUPPORT	
41	0V2857	PHOTOCELL PROTECTION	
42	0V2149	PHOTOCELL	
43	098166	WIRE-FIXING	



	<b>Code</b>	<b>Description</b>	<b>Notes</b>
1	090957	EYELET TERMINAL	
2	090959	FASTON W/O TONGUE	
3	091192	FASTON COVER	
4	090247	FEMALE FASTON COVER	
5	095955	TERMINAL MALE	
6	096136	TERMINAL FEMALE	
7	094405	TERMINAL FEMALE 2,5	
8	094954	FEMALE HOLDER CONNECTOR 3-WAYS	
9	098062	4-WAY CONNECTOR MATE-N-LOK AMP	
10	094955	FEMALE HOLDER CONNECTOR 2-WAYS	
11	0V0809	4-PIN CONNECTOR/P MOLEX 3191	
12	0V0808	3-PIN CONNECTOR/P MOLEX 3191	
13	0V0810	6-PIN CONNECTOR/P MOLEX 3191	
14	0V0811	9-PIN CONNECTOR/P MOLEX 3191	
15	0V0812	12-PIN CONNECTOR/P MOLEX 3191	
16	0V0818	12-PIN CONNECTOR/P MOLEX 3191	
17	0V0815	4-PIN CONNECTOR/P MOLEX 3191	
18	0V0817	9-PIN CONNECTOR/P MOLEX 3191	
19	0V0819	15-PIN CONNECTOR/P MOLEX 3191	
20	0V0813	15-PIN CONNECTOR/P MOLEX 3191	
21	0V0814	3-PIN CONNECTOR/P MOLEX 3191	
22	0V0816	6-PIN CONNECTOR/P MOLEX 3191	
23	094961	FEMALE HOLDER CONNECTOR P.I. 12-W	
24	0V0820	MOLEX CONTACT PULLER	